

Figure S4

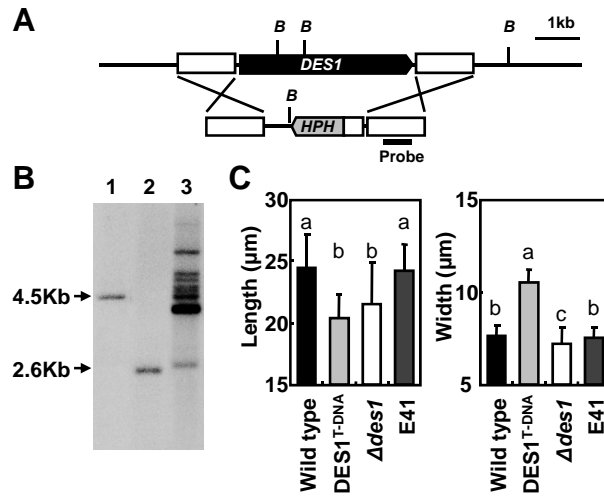


Figure S4. Identification of a *DES1* deletion mutant in *M. oryzae*.

(A) The *DES1* deletion vector (4.5 kb) with the *HPH* cassette replaced the *DES1* ORF by double crossing over. Flanking genomic regions (white box) and the *Bg**III* restriction enzyme site are indicated.

(B) Southern hybridization result. Total genomic DNA was digested with *Bam**HI*, and the blot was probed with a DNA fragment of the 3' flanking region indicated in panel A. Lane 1, 70-15 (wild type); Lane 2, Δ *des1*; Lane 3, E41 (an ectopic transformant).

(C) Measured conidial size of the strains. Values are the mean \pm SD from > 100 conidia of each strain that were measured using the Axiovision image analyzer. Columns with different letters are significantly different, as estimated using Tukey's HSD (Honestly Significant Differences) Test ($P = 0.05$).