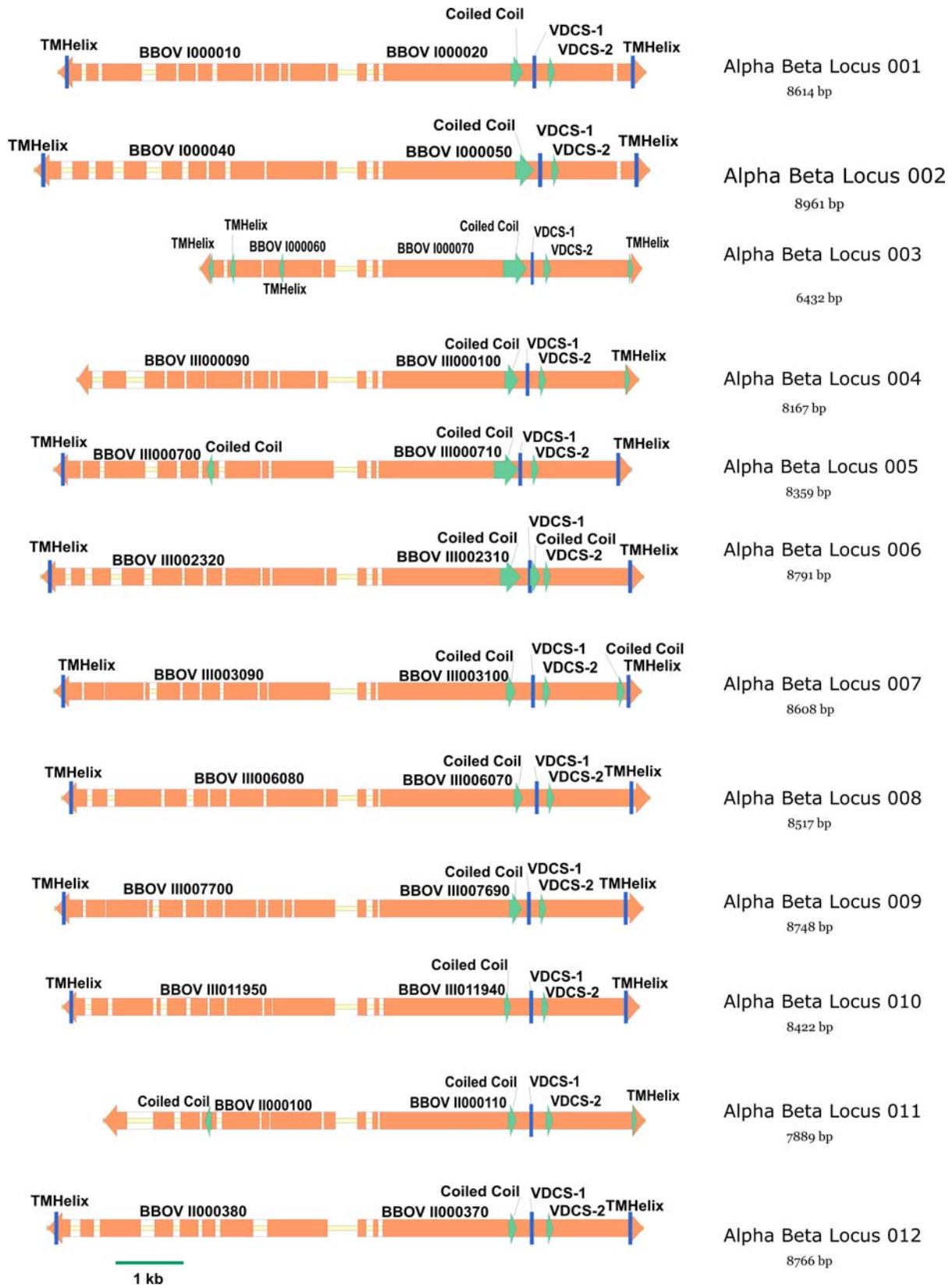
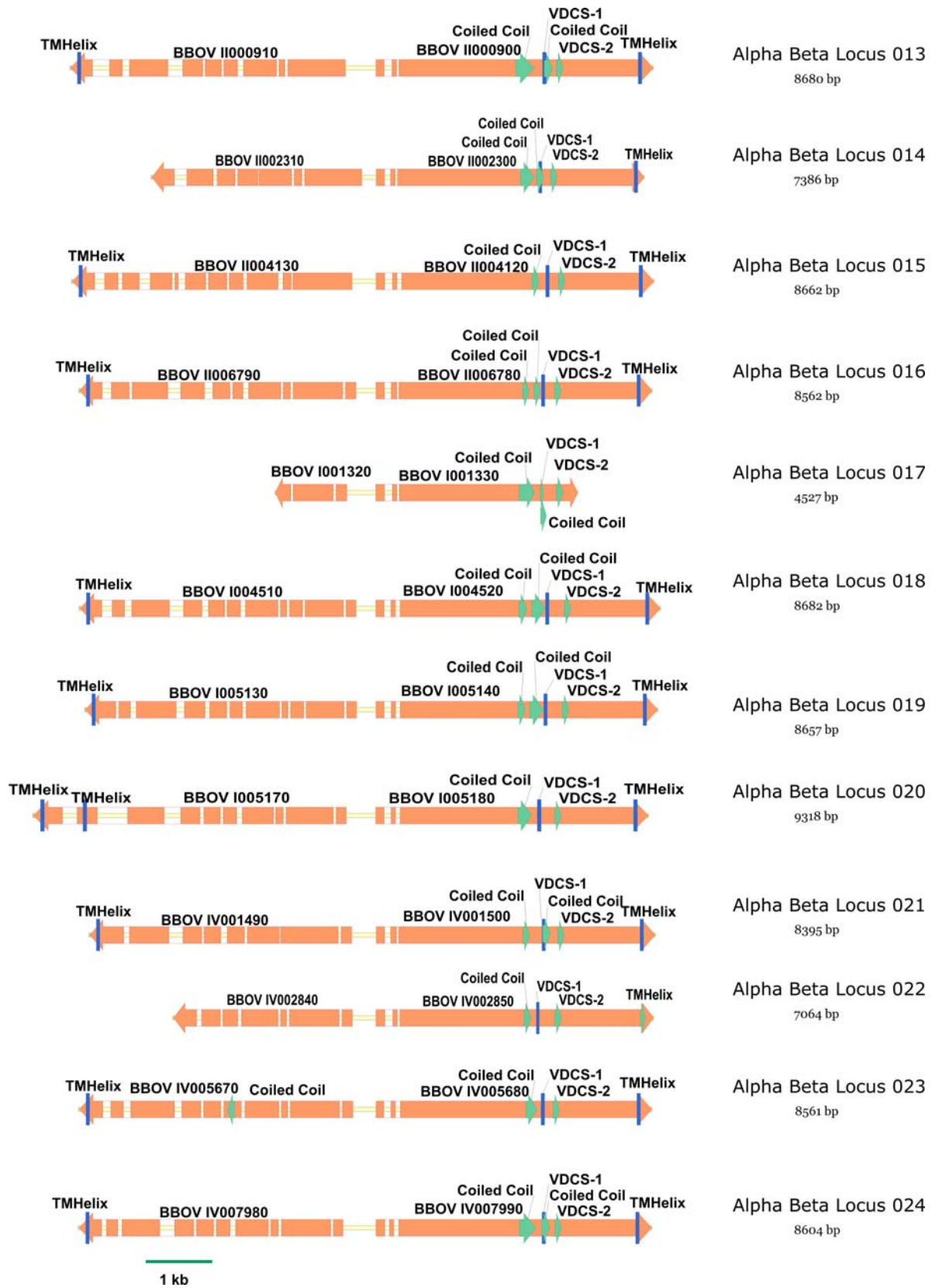


Supplementary Figure 3:





Supplementary Figure 3: Diagram of the 24 putative *ves1* LAT loci. All loci are depicted with *ves1* β on the left and *ves1* α on the right and drawn to the same scale. The genome backbone is a yellow line, exons are orange, and introns are shown as blank boxes. The systematic gene name for each gene is shown. Transmembrane helices (TMHelix), coiled coil domains (Coiled Coil), and the variant domains with conserved sequences 1 and 2 (VDCS-1or 2) are indicated.