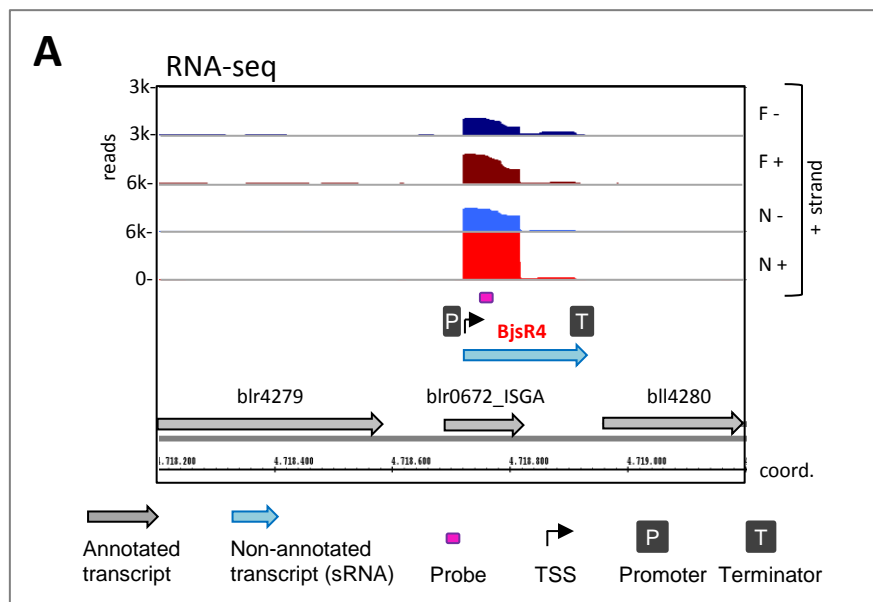
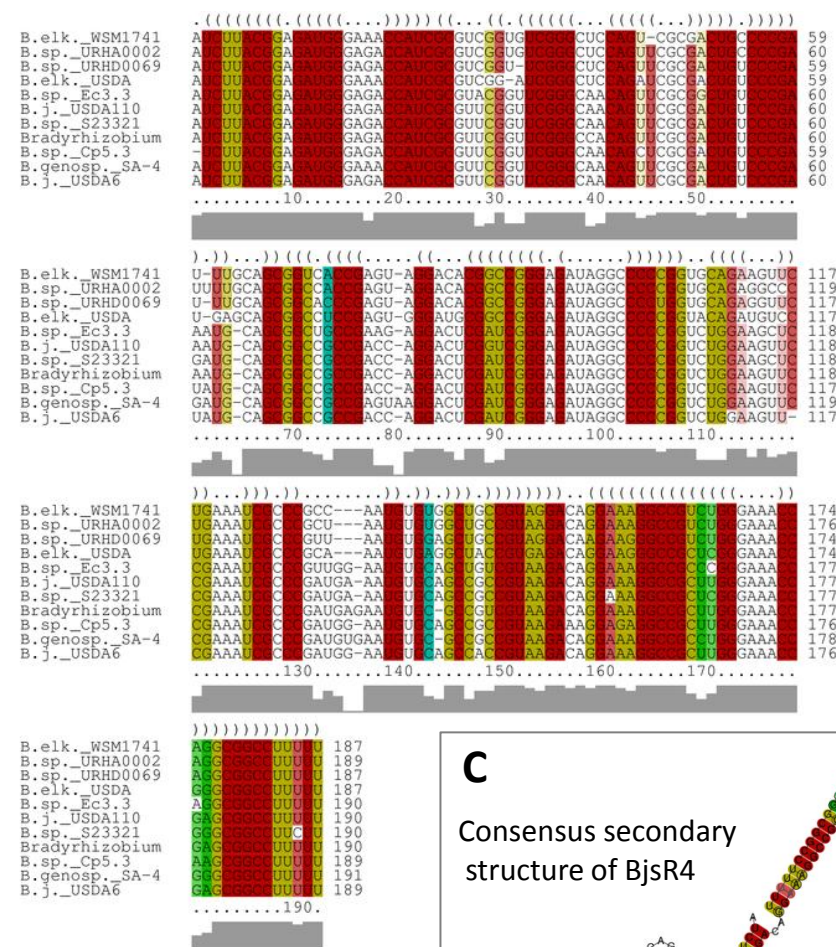


BjsR4



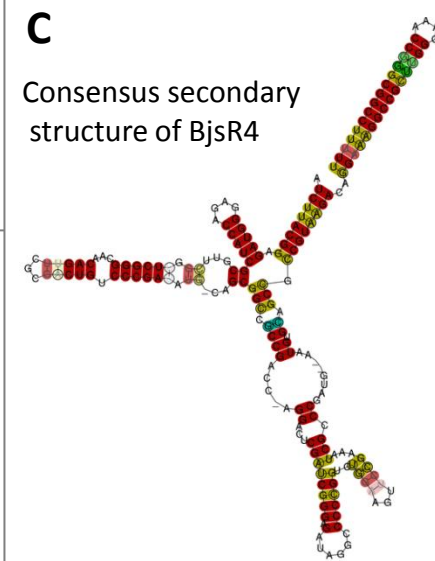
B

LocARNA alignment of RNA sequences



C

Consensus secondary structure of BjsR4



S8 Fig. cDNA reads and alignment of BjsR4 with a TSS at genomic position 4,718,720. A) cDNA reads mapped to the genome. RNA was isolated from exponentially growing, free-living cells (F) in liquid cultures and from nodules (N). RNA samples were treated (+) or not treated (–) with terminal exonuclease TEX. Annotated and non-annotated transcripts are indicated [15]. All libraries were adjusted to the indicated scale (reads). **B)** LocARNA alignment of RNA sequences. For the color code see ref. [42]. B.j., *Bradyrhizobium japonicum*; B. sp., *Bradyrhizobium* sp.; B. genosp., *Bradyrhizobium* genosp.; B. elk., *Bradyrhizobium elkanii*.