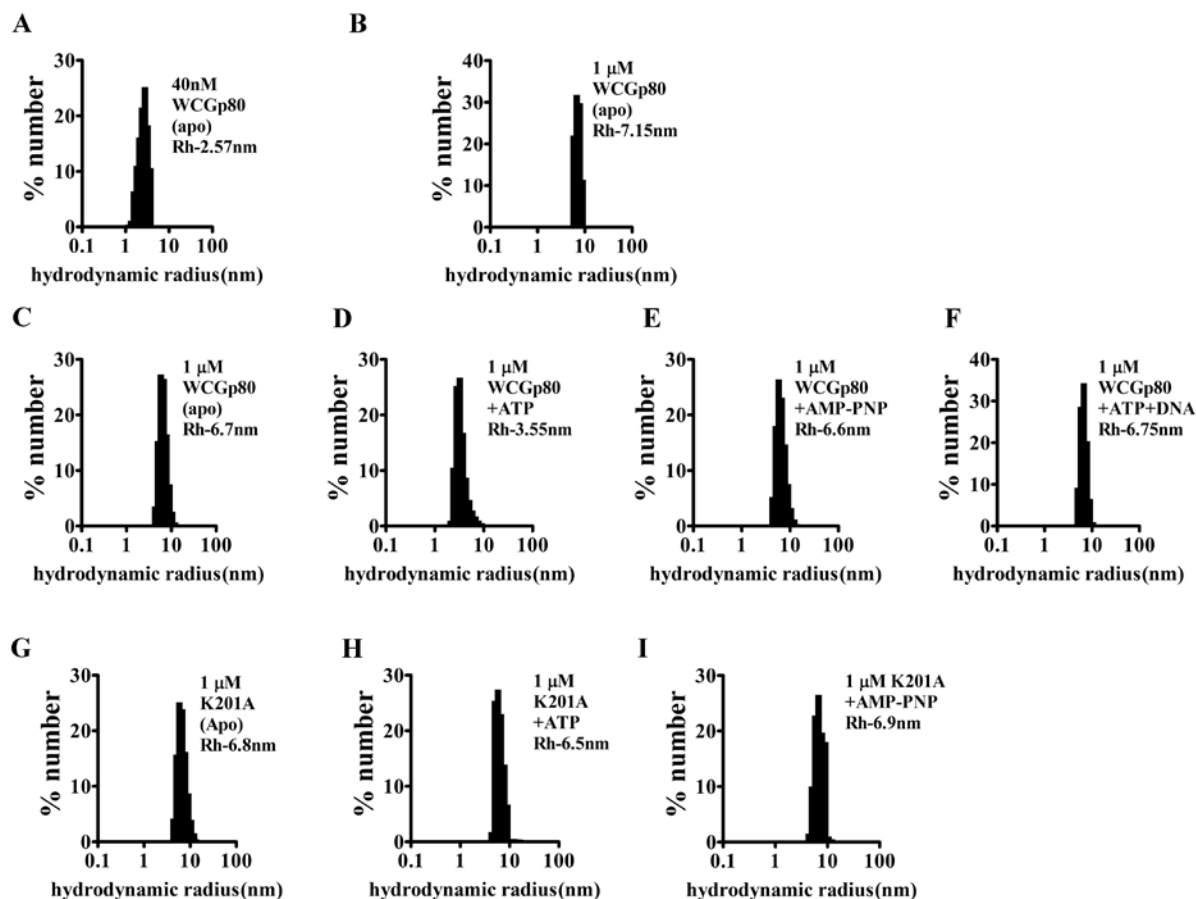


S5 Figure



S5 Figure. . Distribution of hydrodynamic radii (R_h) of the native proteins either WCGp80 (A-F) or WCGp80(K201A) (G to I) as determined by performing DLS experiments. Experiments were performed in the absence of cofactors (apo enzyme) or in the presence of either ATP or AMP-PNP (4 mM) or DNA (100 nM) or combinations thereof. The concentrations of the proteins used were 1 μ M in all cases except for (A) where the protein was diluted to 40 nM. The panels shown represent the results of a single set of experiment. For quantitative interpretation, the weighted average of the R_h was determined. The results presented in Figs. 3, E and F are based on three such experiments.