

Supplementary Figure 6

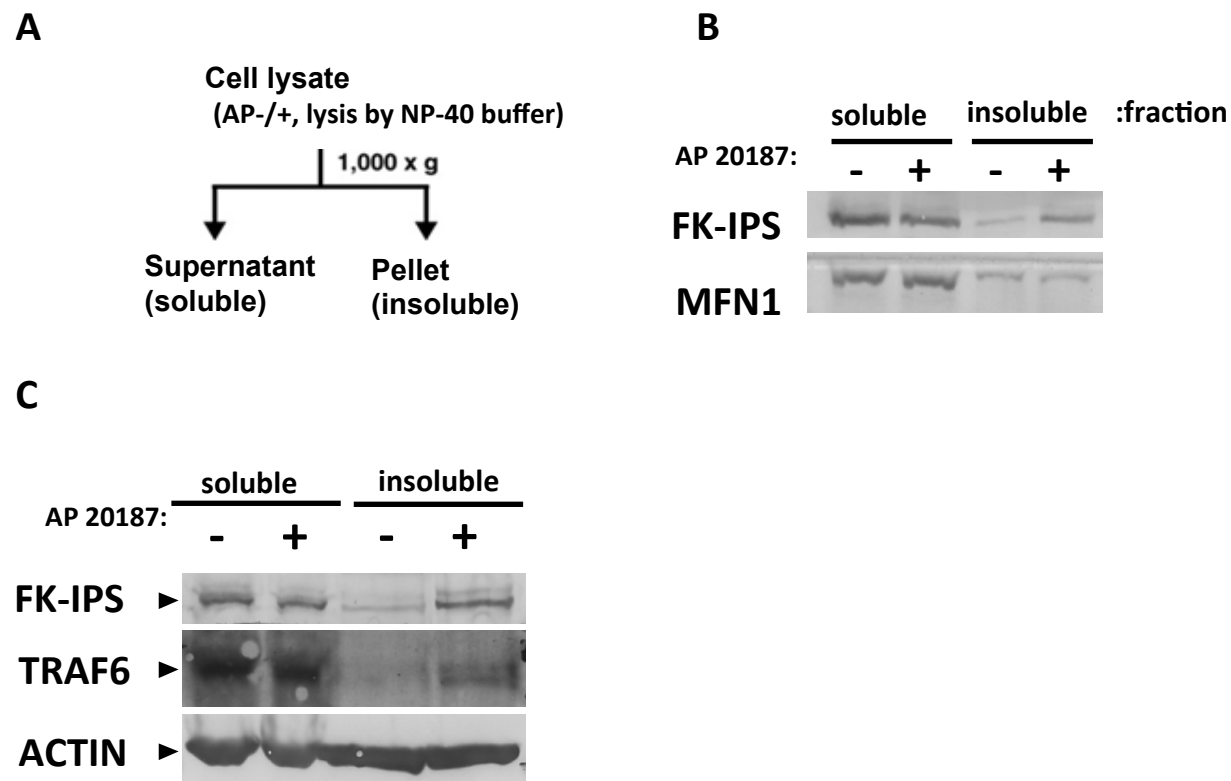


Figure S6. Recruitment of TRAF6 into NP-40 insoluble fraction upon oligomerization of IPS-1.

A. Scheme for isolation of soluble and insoluble fractions by differential centrifugation.

B and C. Immunoblot analysis of soluble/insoluble fractions separated by differential centrifugation. FK-IPS DCARD stable cells were cultured for 3h in the absence or presence of AP. Cell lysates were separated by differential centrifugation. FK-IPS DCARD and endogenous MFN1, TRAF6, and actin were detected by immunoblotting.