

Figure S6.

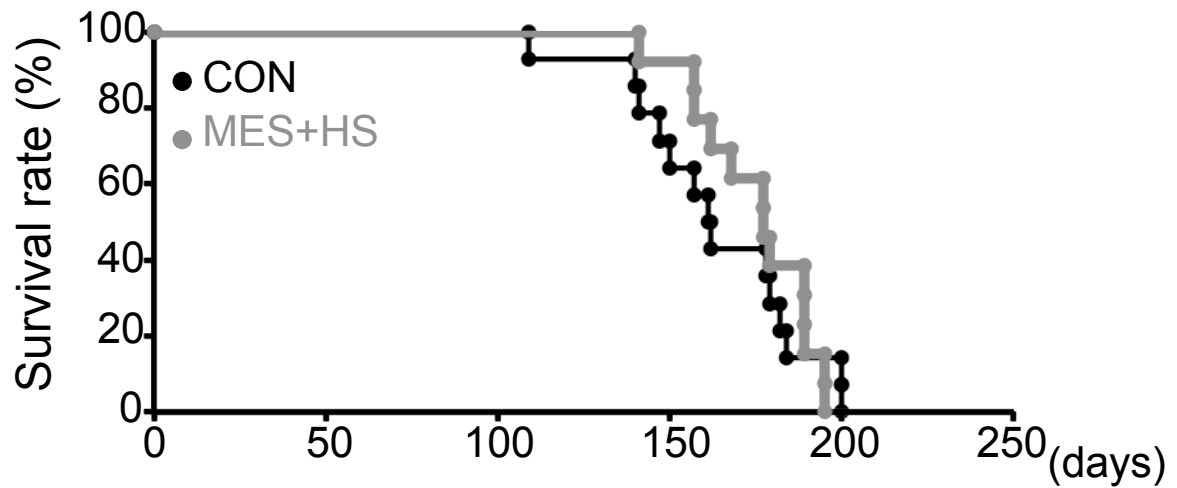


Figure S6. *MES+HS does not affect the survival of Alport mice.* Six- to seven-week-old Alport mice were treated with MES+HS for 10 min twice a week. Survival rate is illustrated as Kaplan-Meier curve (n=14 for each group). Black circle: sham-treated group (CON), grey circle: MES+HS-treated group (MES+HS).