

Figure S3

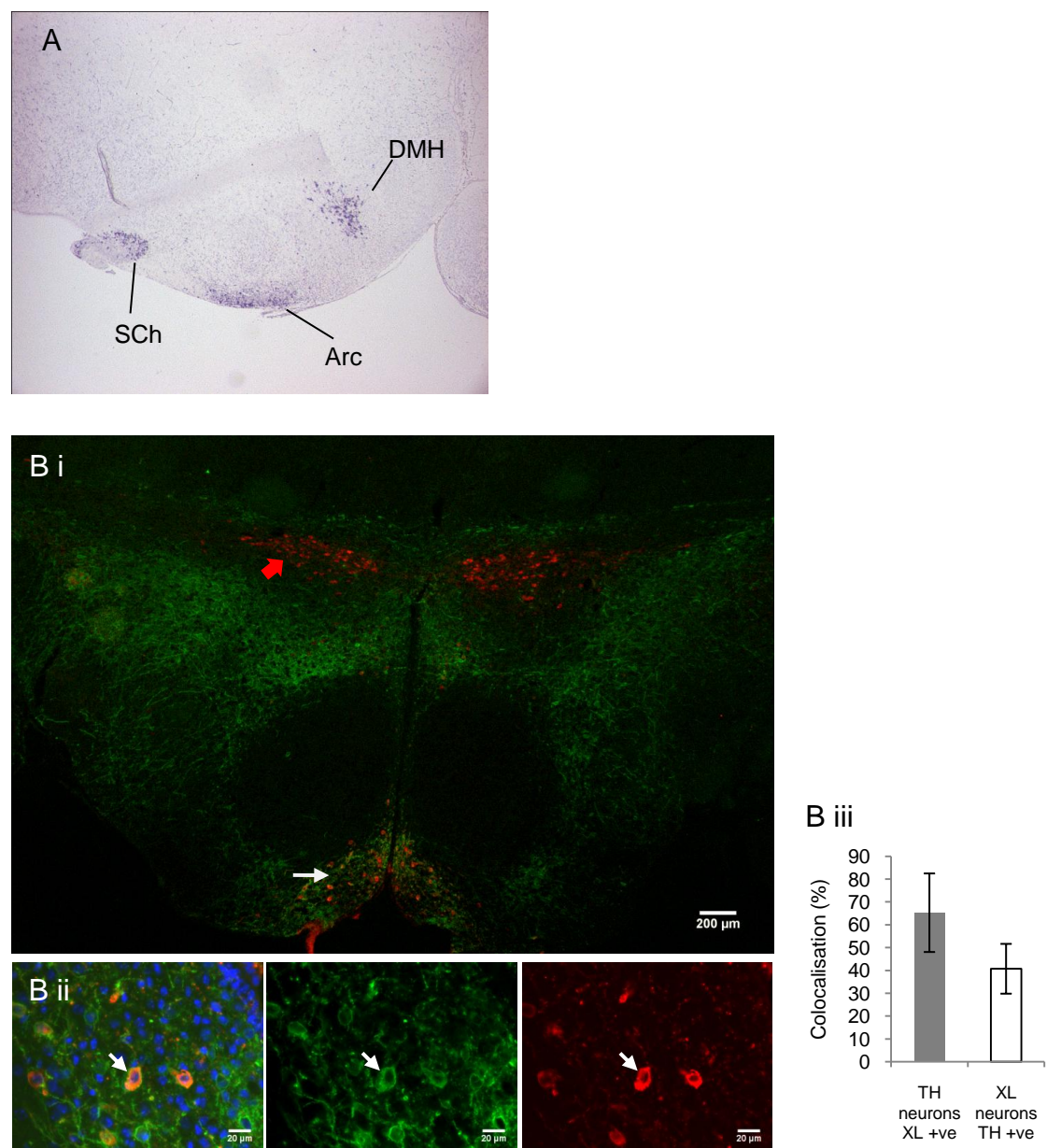


Figure S3. Expression and co-localisation of *Gnasxl* in the hypothalamus. (A) Expression of *Gnasxl* in the hypothalamic arcuate nucleus at postnatal day 4. An *in situ* hybridisation of a sagittal brain section with a Digoxigenin-labelled RNA probe is shown. (B) XLas expression in A12 dopaminergic neurons of the arcuate nucleus of adult mice. (B i) Overview; XLas in green; Tyrosine hydroxylase (TH) in red. White arrow = A12 dopamine neuron group of the arcuate nucleus. Red arrow = A13 dopaminergic cells of the zona incerta (no co-localisation). (B ii) Higher magnification showing co-localisation in a portion of arcuate neurons. (B iii) ~65 % of TH positive neurons in the A12 dopaminergic cell group showed XLas expression (n =2).