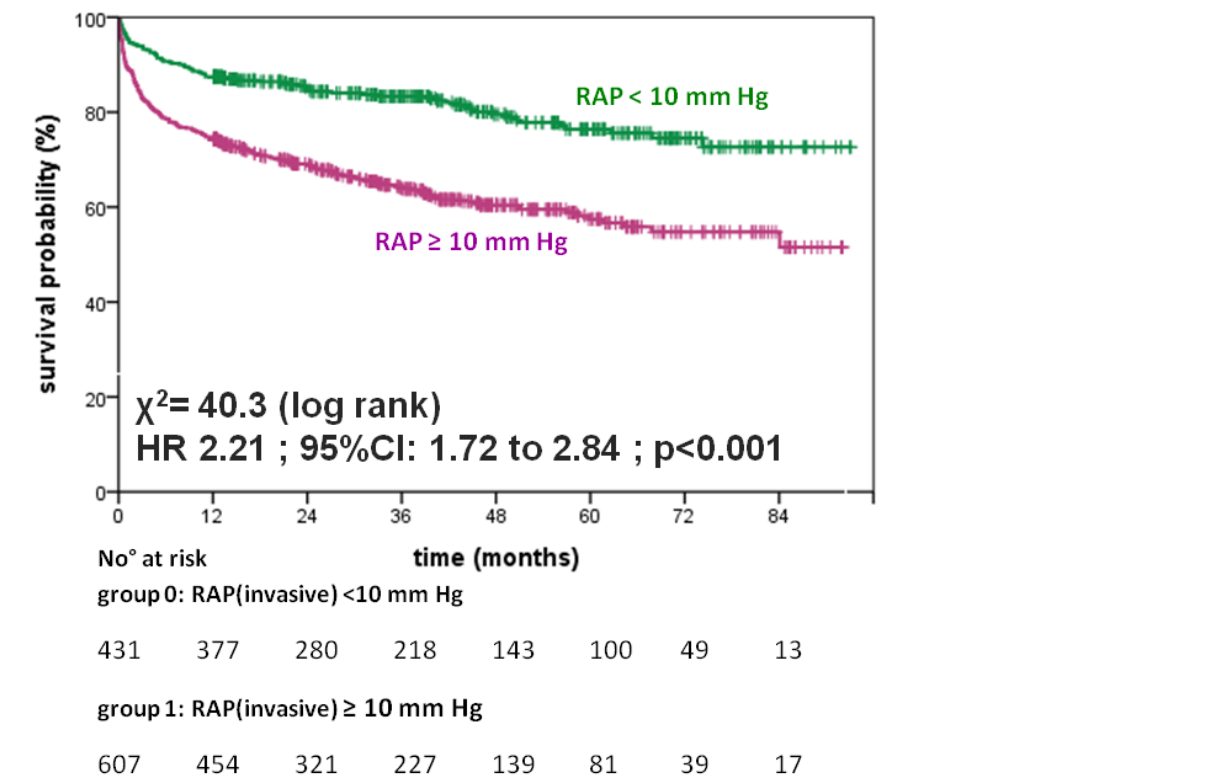
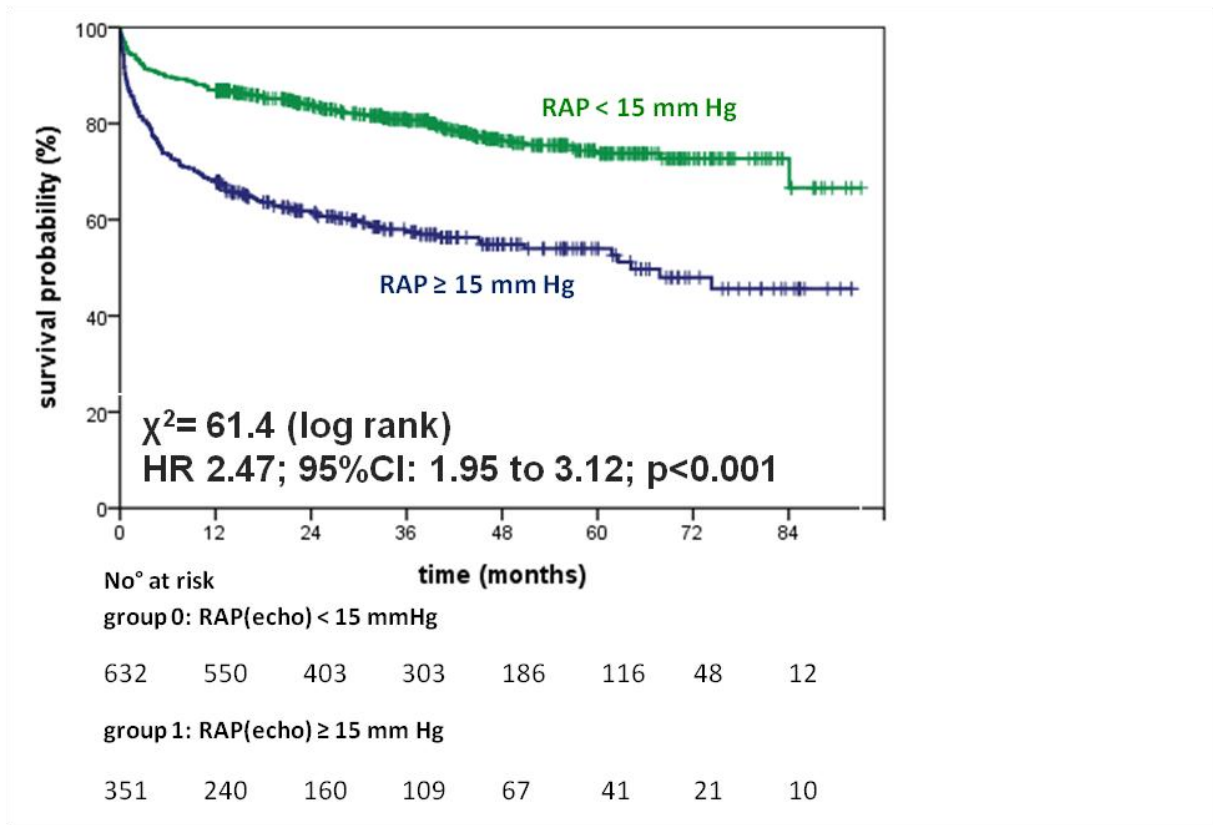


S8 Fig. Kaplan-Meier curves for survival in dependence of diastolic function by RAP measured invasively (a) or non-invasive (b), and invasively measured LVEDP (c). Optimal cut-off for dichotomous analysis was determined by ROC analyses. Abbreviations: RAP right atrial pressure, LVEDP LV end-diastolic pressure, HR hazard ratio, 95%CI 95% confidence interval, ROC receiver-operator characteristics

A



B



C

