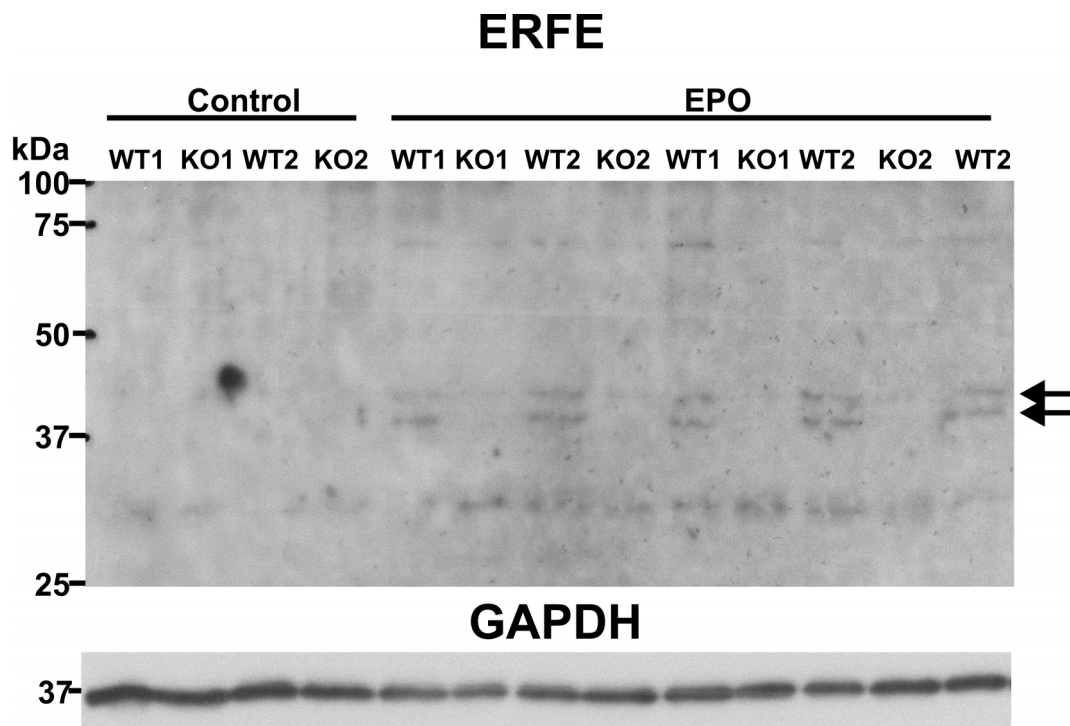


S1 Fig. Validation of the anti-ERFE antibody.



Microsomes were prepared from two sets of mouse spleens from 2 month old male *Fam132b*^{+/+} (WT) and *Fam132b*^{-/-} (KO) control mice, or from *Fam132b*^{+/+} and *Fam132b*^{-/-} mice treated with erythropoietin (EPO) 15 hours before sacrifice. Following standard immunoblotting procedure, ERFE was detected by SC-246567 anti-myonectin antibody at 1:200 dilution.

ERFE could not be detected in control mice. EPO treatment for 15 hours enabled ERFE detection (arrows) in *Fam132b*^{+/+} mice, but not in *Fam132b*^{-/-} mice. It is therefore concluded that the two bands at approximately 42 and 39 kDa (arrows) represent ERFE protein.