

FIGURE S5

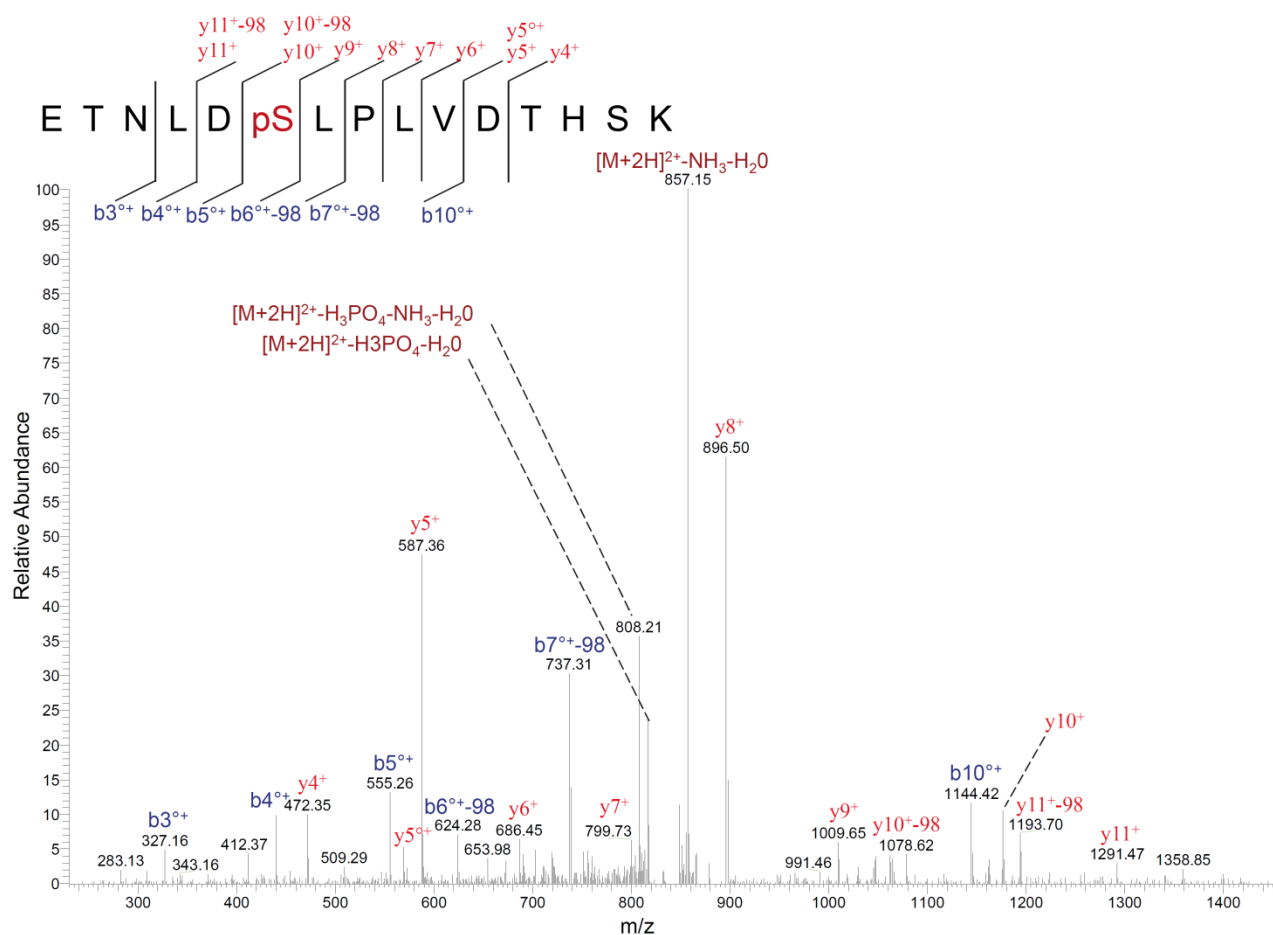


FIGURE S5. MS/MS spectrum (simultaneous fragmentation of neutral loss product and precursor) for identification of vimentin *in vitro* phosphorylation site Ser430. The fragmentation spectrum derived from tryptic vimentin peptide is shown. The peptide sequence and the observed ions of the phosphopeptide (inset) are shown, with their spectrum. The tandem mass spectrum was labeled to show singly and doubly charged b and y ions, as well as ion corresponding to neutral losses of water (o), NH_3^* and H_3PO_4 group (98Da). Fragment ions indicate a phosphorylation of Ser430.