

# Figure S8. High Resolution Mass spectra of GA-III (1) (ESI+).

## Elemental Composition Report

### Single Mass Analysis

Tolerance = 5.0 PPM / DBE: min = -1.5, max = 100.0

Element prediction: Off

Number of isotope peaks used for i-FIT = 9

Monoisotopic Mass, Even Electron Ions

136 formula(e) evaluated with 1 results within limits (all results (up to 1000) for each mass)

Elements Used:

C: 1-150 H: 1-150 O: 0-15

04-Jul-2013 9:5::6

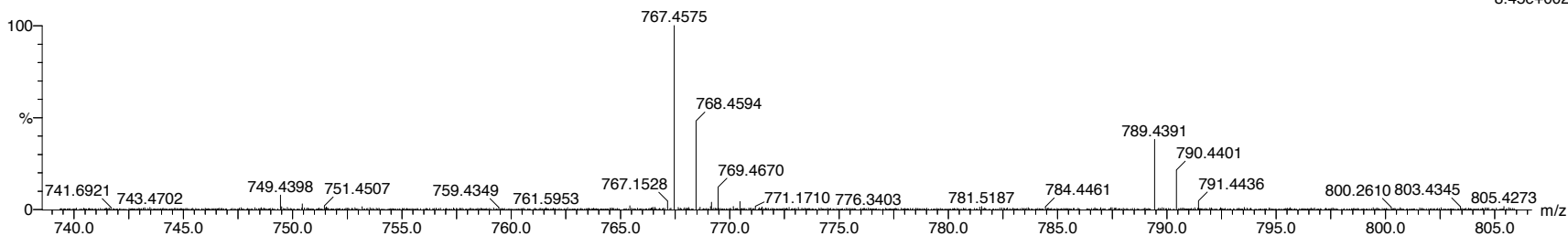
GUE\_GA-III 53 (1.293) Cm (49:59)

MeOH/H2O

LCT Premier XE KE483

1: TOF MS ES+

8.45e+002



Minimum: -1.5  
Maximum: 5.0 5.0 100.0

Mass	Calc. Mass	mDa	PPM	DBE	i-FIT	i-FIT (Norm)	Formula
767.4575	767.4582	-0.7	-0.9	8.5	387.0	0.0	C41 H67 O13 [M+H] <sup>+</sup>