

**Figure S2.** Population structure analysis of 1,092 genomes from 4 continents (Table S3) using 48 SNPs designed for assigning Qatari to Q1, Q2, Q3 population clusters (Table S1). Shown is a plot of individual admixture component identified using STRUCTURE [2] with  $k=3$ . Individuals are sorted from left to right by population. Colors correspond to the major ancestry component within the three major groups: European (red), Asian (green), African (blue).

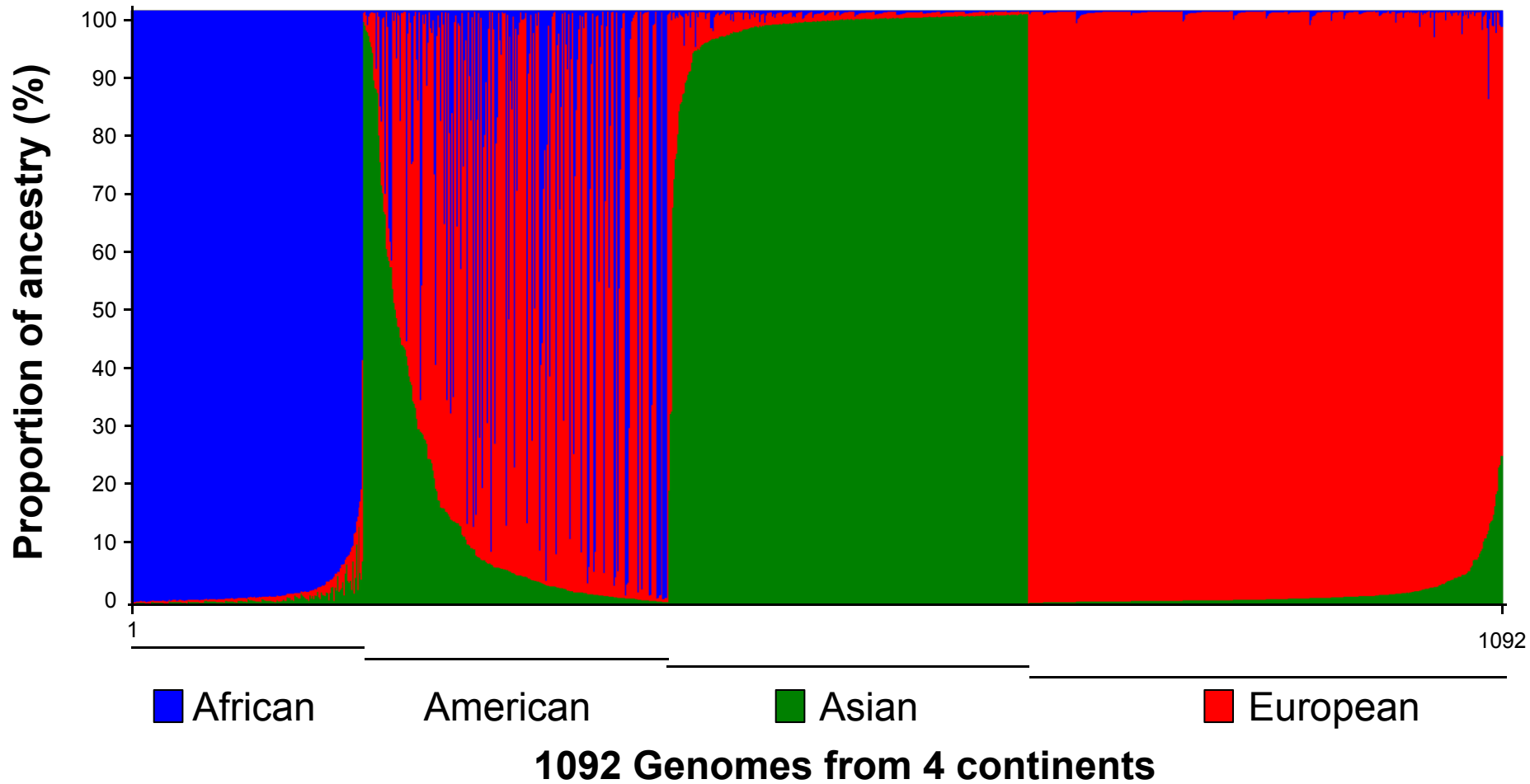


Figure S2