

Additional SOM images for ES-segmentation

Chromosomal-specific population maps

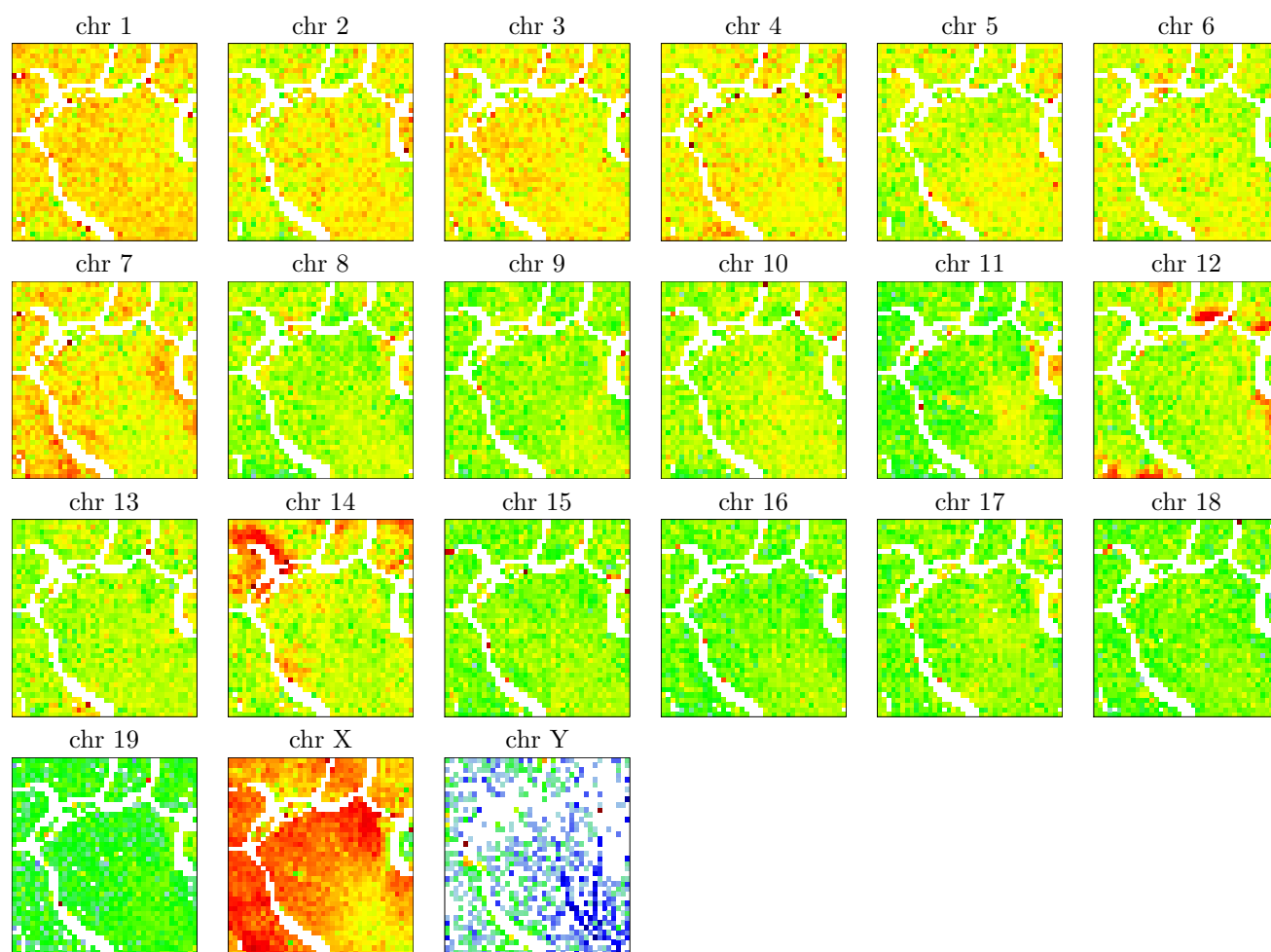


Figure 1: Chromosome-specific population maps of ES-segmentation for each chromosome. The logarithmic color scale ranges from 0 to 1.

Chromosome enrichment maps

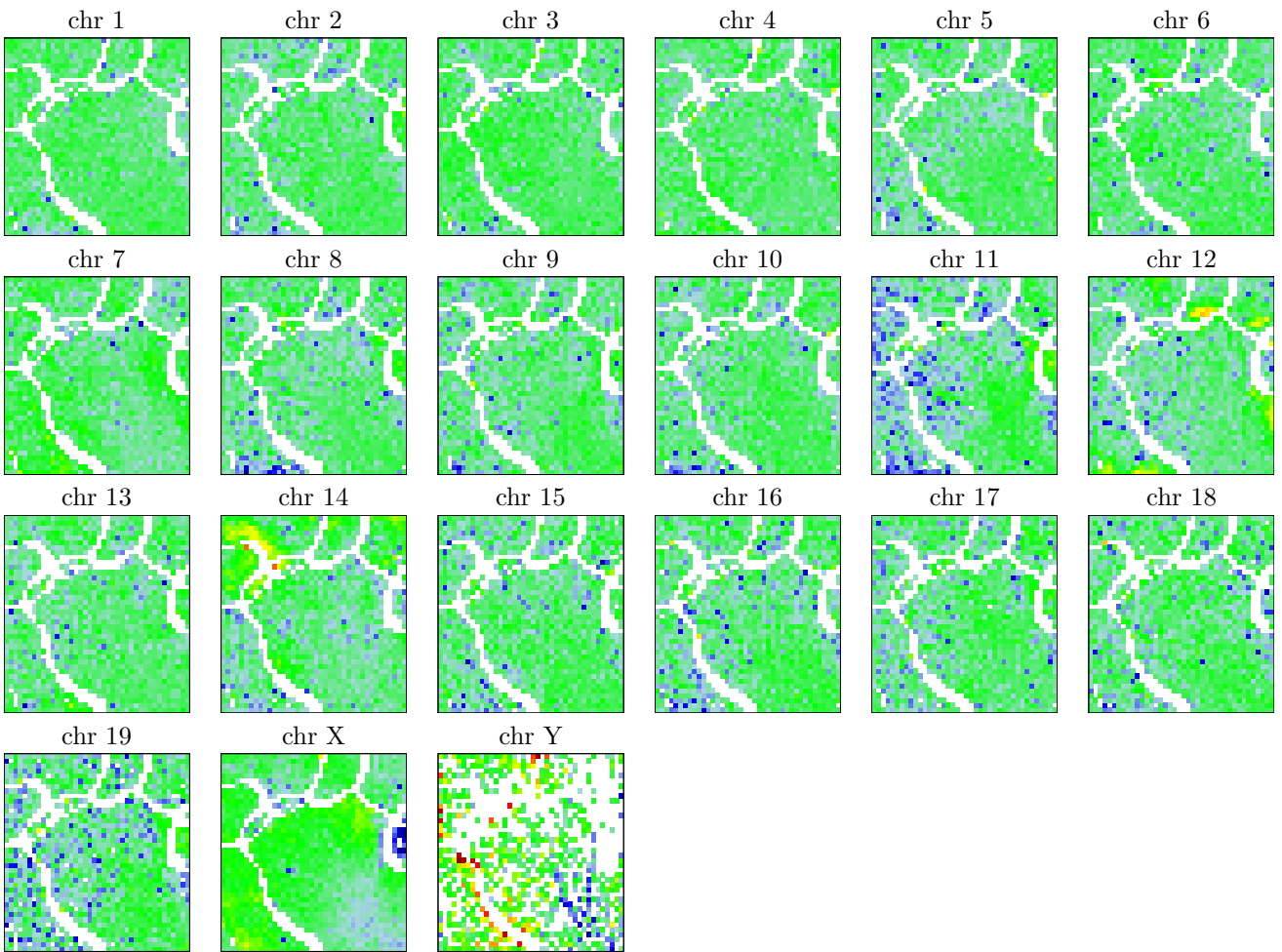


Figure 2: Chromosome enrichment maps of ES-segmentation for each chromosome. The logarithmic color scale ranges from 0 to 46. Light blue corresponds to the expected number of segments within one node (enrichment of 1). Nodes with a 10-fold enrichment are colored in yellow.