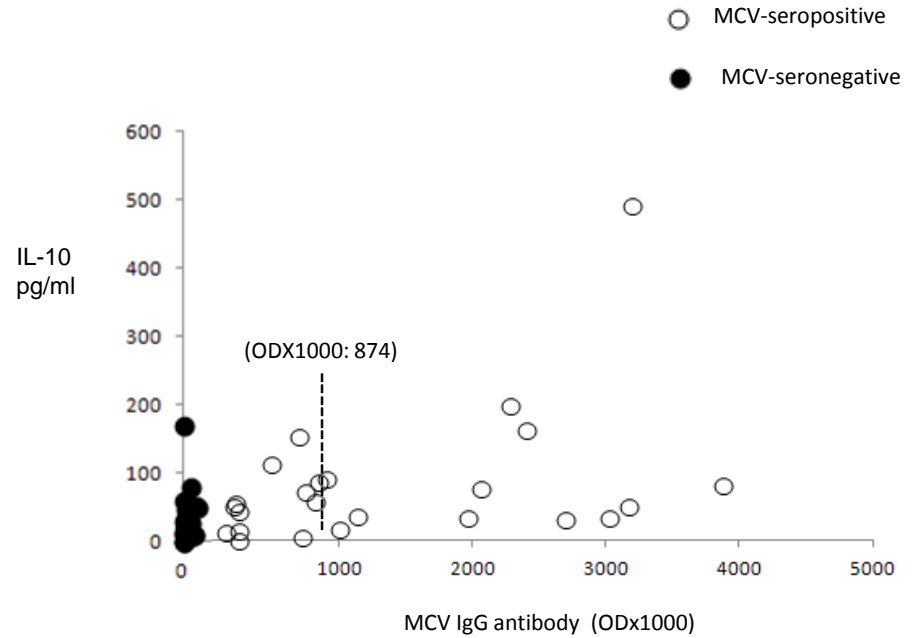
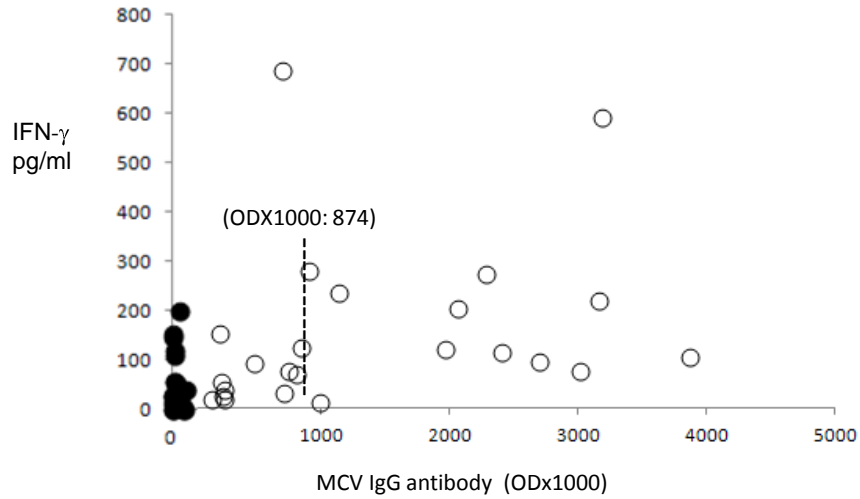
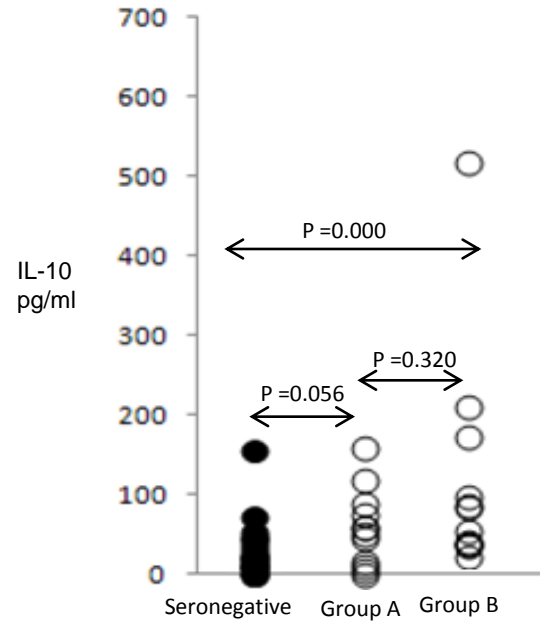
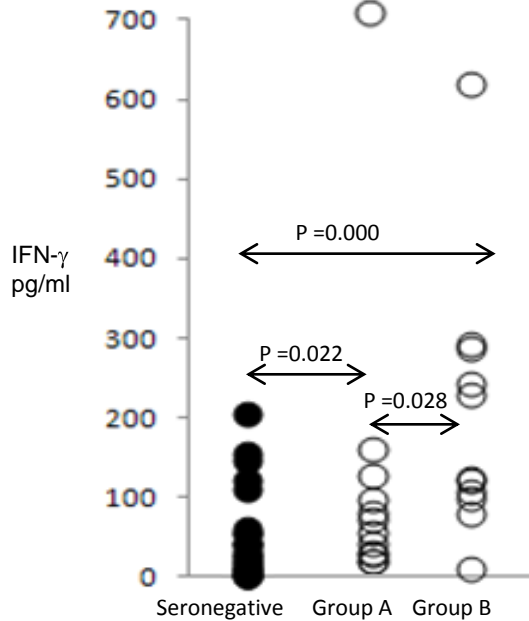


Supplement Figure S1

(A)



(B)



A) Effect of MCV-specific IgG level on Th-cell responses . MCV-specific IFN- γ and IL-10 responses were plotted against MCV-IgG responses among seropositive (open circles) and seronegative individuals (closed circles). MCV VP1 specific humoral immune response is shown by optical density x 1000 (ODX1000). Median ODX1000 (874) is shown by (---) a line.

B) Comparison of MCV-specific IFN- γ and IL-10 responses among low and high MCV-IgG and MCV-seronegative groups. MCV-specific IFN- γ and IL-10 responses were compared between the MCV- seronegative subjects and sub-groups of MCV-seropositive subjects. Group A: MCV-seropositive subjects having MCV-IgG ODx1000 below 874, and group B: subjects having MCV-IgG ODx1000 above 874.