

Supporting Online Material

Avian Ultraviolet/Violet Cones Identified as Probable Magnetoreceptors

Christine Nießner, Susanne Denzau, Julia Christina Gross, Leo Peichl, Hans-Joachim Bischof, Gerta Fleissner, Wolfgang Wiltschko, Roswitha Wiltschko

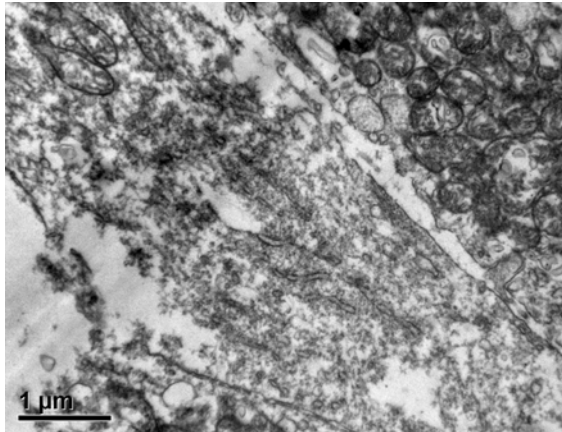


Fig. S1. Electron-microscopic image of the inner segment of a Cry1a-immunoreactive cone in the chicken retina. Extending from top left to bottom right is the Cry1a-negative inner segment of a cone having a Cry1a-positive outer segment. The inner segment of an unidentified neighbouring photoreceptor appears in the top right corner. See main text for details.