

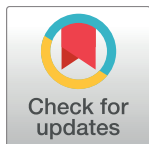
CORRECTION

Correction: Biting Midges (Diptera: Ceratopogonidae) from Cambay Amber Indicate that the Eocene Fauna of the Indian Subcontinent Was Not Isolated

The *PLOS ONE* Staff

There is an error in the penultimate sentence of the first paragraph of the Materials and Methods. The correct sentence is: All specimens will be deposited in the collection of the Birbal Sahni Institute of Palaeosciences, Lucknow, India

A portion of the figure legend for [Fig 9](#) is incorrectly displayed in the fifth paragraph under the subheading “Biogeography” in the Discussion section. The publisher apologizes for the error. Please see the complete, correct [Fig 9](#) caption [here](#).



OPEN ACCESS

Citation: The *PLOS ONE* Staff (2017) Correction: Biting Midges (Diptera: Ceratopogonidae) from Cambay Amber Indicate that the Eocene Fauna of the Indian Subcontinent Was Not Isolated. *PLoS ONE* 12(3): e0173135. <https://doi.org/10.1371/journal.pone.0173135>

Published: March 29, 2017

Copyright: © 2017 The PLOS ONE Staff. This is an open access article distributed under the terms of the [Creative Commons Attribution License](#), which permits unrestricted use, distribution, and reproduction in any medium, provided the original author and source are credited.

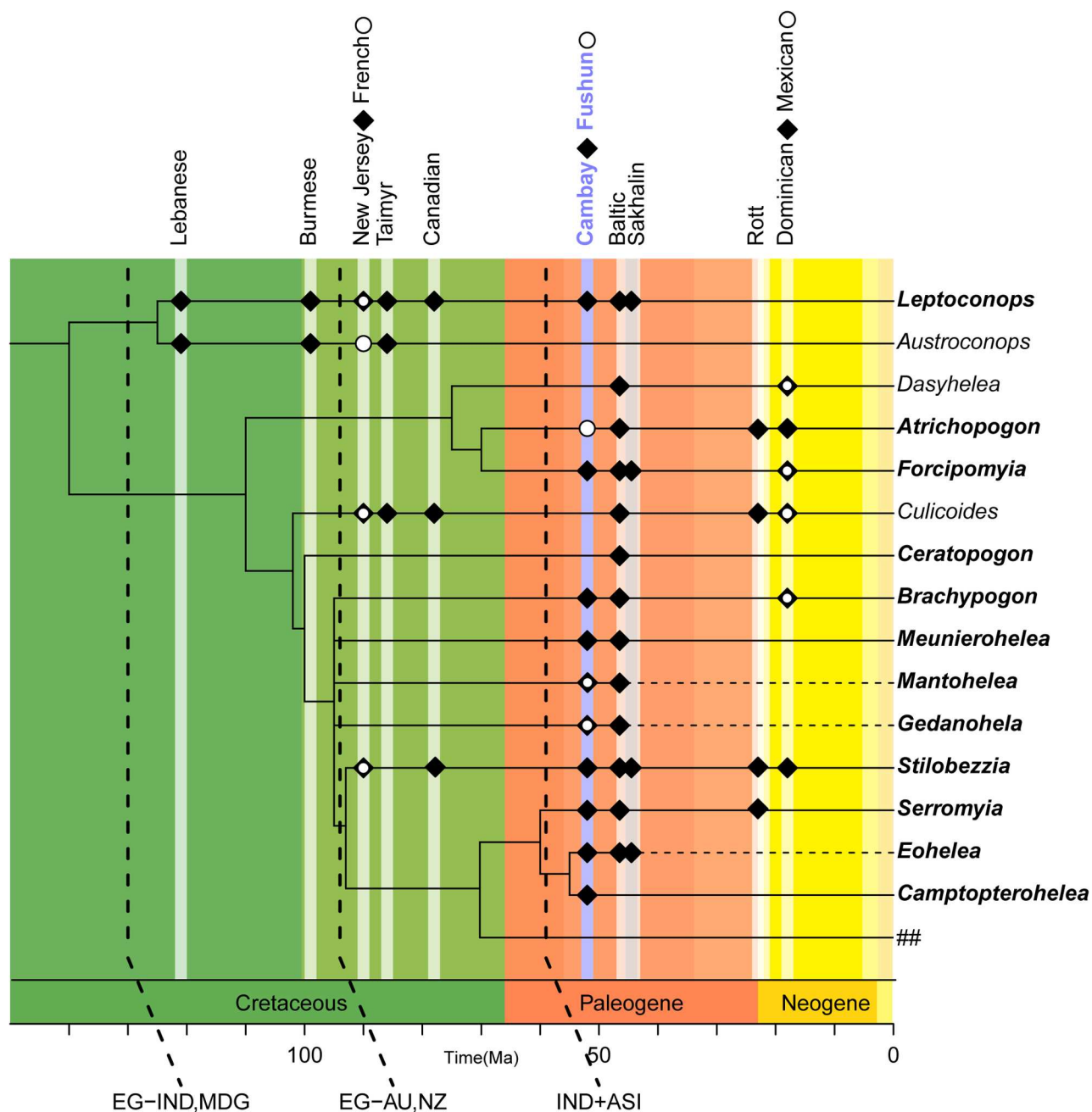


Fig 9. Relationships of select extant and fossil Ceratopogonidae genera (compiled from data after [28, 59, 60, 63]). Dashed lines in the cladogram refer to extinct taxa, solid lines to extant taxa. ## refers to genera in tribes different than Ceratopogonini (Heteromyiini, Hebetulini, Johannsenomyiini, Sphaeromyiini, Palpomyiini and Stenoxenini). Explanations: EG-IND, MDG = beginning of separation of India (IND) and Madagascar (MDG) from East Gondwanaland (EG) (after [64]); EG-AU, NZ = beginning of separation of Australia (AU) and New Zealand (NZ) from East Gondwana (after [64]); IND+ASI = collision of India with Asia (after [65]).

<https://doi.org/10.1371/journal.pone.0173135.g001>

Reference

1. Stebner F, Szadziewski R, Singh H, Gunkel S, Rust J (2017) Biting Midges (Diptera: Ceratopogonidae) from Cambay Amber Indicate that the Eocene Fauna of the Indian Subcontinent Was Not Isolated. PLoS ONE 12(1): e0169144. doi:10.1371/journal.pone.0169144 PMID: 28076427