

CORRECTION

# Correction: Enigmatic Fossils from the Lower Carboniferous Shrimp Bed, Granton, Scotland

Mikołaj K. Zapalski, Euan N. K. Clarkson

The following text, which appears as the second paragraph of the Introduction, should not be included in the Introduction, but instead in the [Fig 1](#) legend: “LWM and HWM refer to Low Water Mark and High Water Mark respectively. Based upon British Geological Survey geological map. 1:50000 Series. Edinburgh Scotland Sheet 32 E [7], with the permission of the British Geological Survey.” Please see the complete, correct [Fig 1](#) and its legend below.

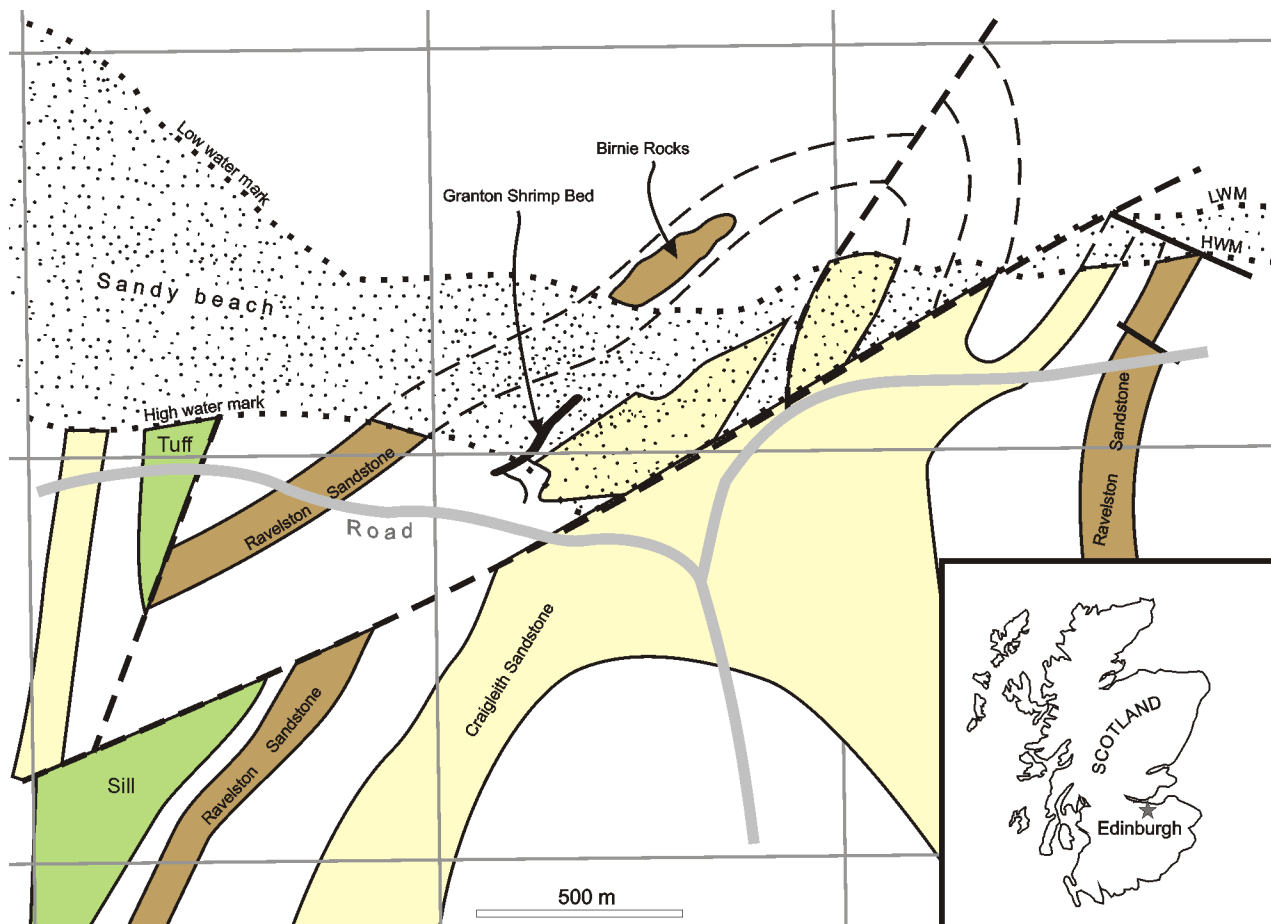


## OPEN ACCESS

**Citation:** Zapalski MK, Clarkson ENK (2016) Correction: Enigmatic Fossils from the Lower Carboniferous Shrimp Bed, Granton, Scotland. PLoS ONE 11(2): e0150047. doi:10.1371/journal.pone.0150047

**Published:** February 19, 2016

**Copyright:** © 2016 Zapalski, Clarkson. This is an open access article distributed under the terms of the [Creative Commons Attribution License](#), which permits unrestricted use, distribution, and reproduction in any medium, provided the original author and source are credited.



**Fig 1. A map showing the locality of the Granton Shrimp Bed at Granton, Edinburgh.** LWM and HWM refer to Low Water Mark and High Water Mark respectively. Based upon British Geological Survey geological map. 1:50000 Series. Edinburgh Scotland Sheet 32 E [7], with the permission of the British Geological Survey.

doi:10.1371/journal.pone.0150047.g001

## Reference

1. Zapalski MK, Clarkson ENK (2015) Enigmatic Fossils from the Lower Carboniferous Shrimp Bed, Granton, Scotland. PLoS ONE 10(12): e0144220. doi: [10.1371/journal.pone.0144220](https://doi.org/10.1371/journal.pone.0144220) PMID: [26701306](https://pubmed.ncbi.nlm.nih.gov/26701306/)