

## Correction

# Correction: Genome-Wide Comparative Analysis of 20 Miniature Inverted-Repeat Transposable Element Families in *Brassica rapa* and *B. oleracea*



**The PLOS ONE Staff**

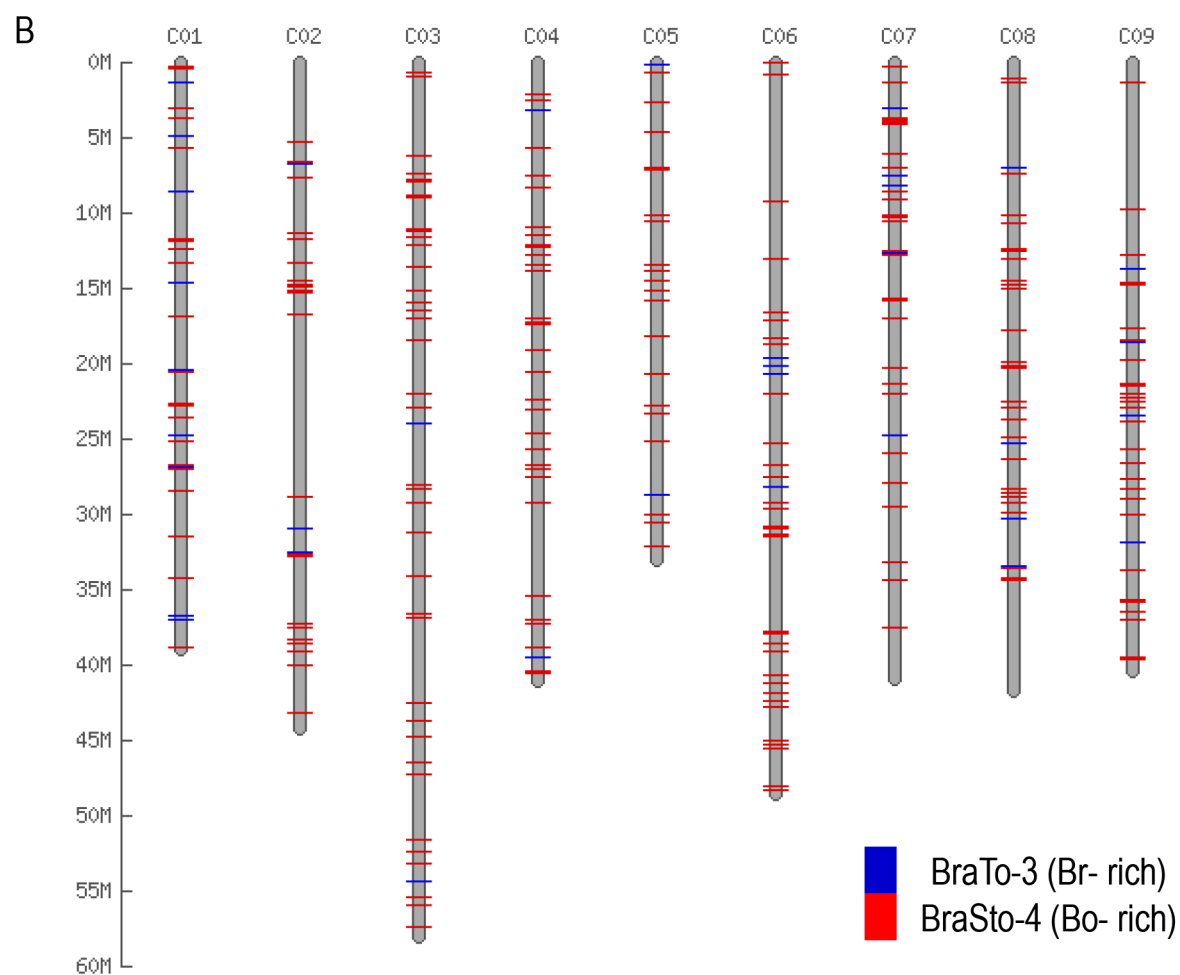
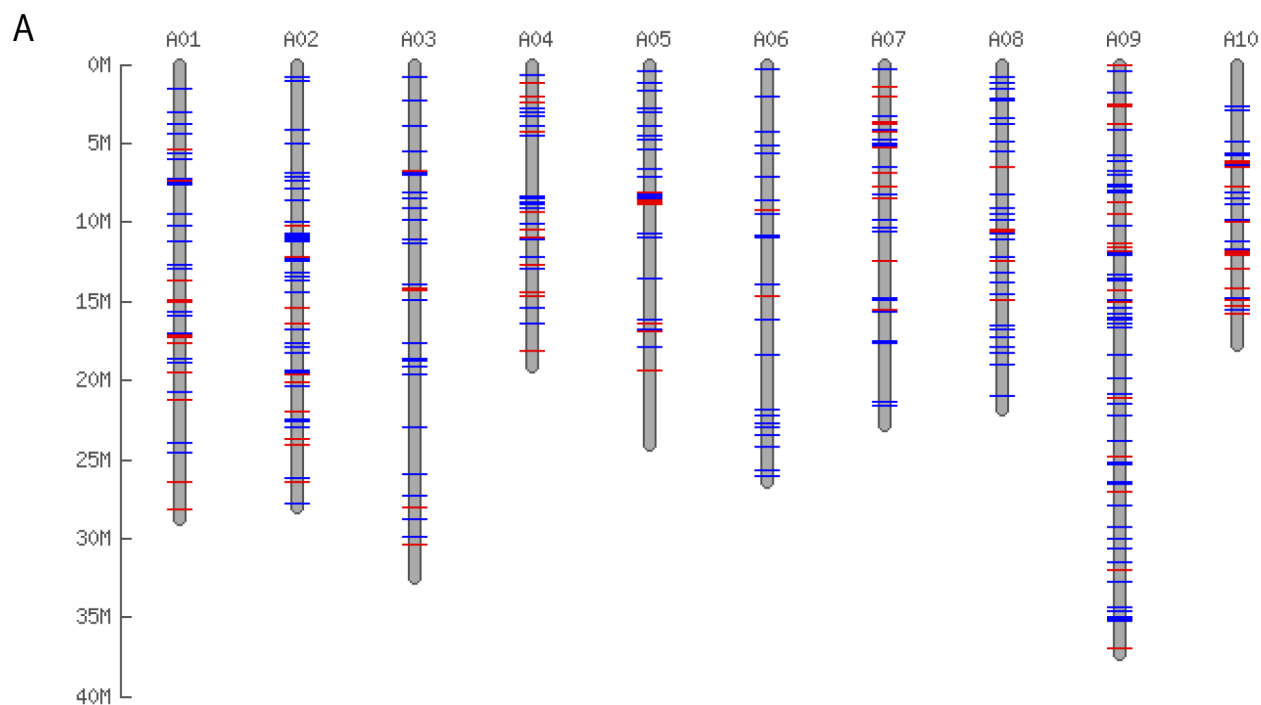
There are errors in Figure 4 and Figure 6.

In the legend of Figure 4, the legend box color should be blue instead of red for BraTo-3 (Br-rich) and should be red for BraSto-4 (Bo-rich). Please see the corrected Figure 4 [here](#).

**Citation:** The PLOS ONE Staff (2014) Correction: Genome-Wide Comparative Analysis of 20 Miniature Inverted-Repeat Transposable Element Families in *Brassica rapa* and *B. oleracea*. PLoS ONE 9(7): e103757. doi:10.1371/journal.pone.0103757

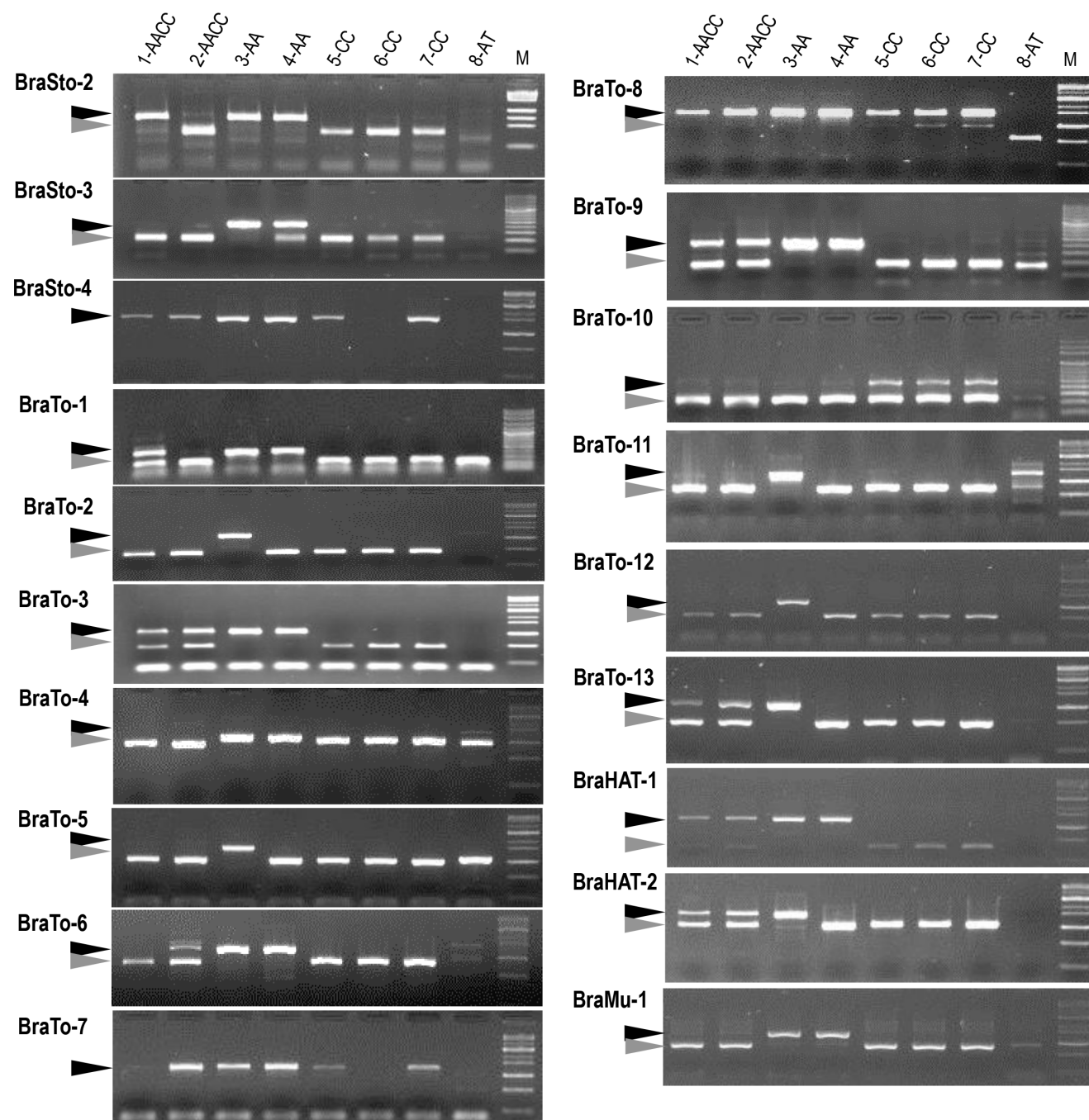
**Published:** July 22, 2014

**Copyright:** © 2014 The PLOS ONE Staff. This is an open-access article distributed under the terms of the Creative Commons Attribution License, which permits unrestricted use, distribution, and reproduction in any medium, provided the original author and source are credited.



**Figure 4: Differential distribution of MITE family members in *B. rapa* and *B. oleracea*.** MITE families with intact members were used for *in silico* map construction on the 256 Mb *B. rapa* (A) and the 385 Mb *B. oleracea* (B) pseudo-chromosome sequences based on the physical positions. The physical position information for the MITE families of *B. rapa* and *B. oleracea* are listed in Table S3 and S4, respectively. doi:10.1371/journal.pone.0094499.g004

In the fifth blot of Figure 6 on the left, the caption BraTo-15 should be replaced with BraTo-2. Please see the corrected Figure 6 here.



**Figure 6: MITE insertion polymorphism (MIP) analysis of 19 MITE families in the *Brassica* genome.** The accessions used here: 1- *B. napus* (Tapidor), 2- *B. napus* (Ningyou 7), 3- *B. rapa* (Chiifu), 4- *B. rapa* (Kenshin), 5- *B. oleracea* (C1234), 6- *B. oleracea* (C1184), 7- *B. oleracea* (C1235), 8- *A. thaliana* (Columbia). M, molecular size marker. Black and gray arrowheads indicate the products with and without MITE insertion, respectively. doi:10.1371/journal.pone.0094499.g006

## Reference

1. Sampath P, Murukarthick J, Izzah NK, Lee J, Choi H-I, et al. (2014) Genome-Wide Comparative Analysis of 20 Miniature Inverted-Repeat Transposable Element Families in *Brassica rapa* and *B. oleracea*. PLoS ONE 9(4): e94499. doi:10.1371/journal.pone.0094499