

The Teratogenic Effects of Prenatal Ethanol Exposure Are Exacerbated by Sonic Hedgehog or Gli2 Haploinsufficiency in the Mouse

Henry W. Kietzman¹, Joshua L. Everson¹, Kathleen K. Sulik¹, Robert J. Lipinski^{1,2*}

¹ The Bowles Center for Alcohol Studies, University of North Carolina at Chapel Hill, Chapel Hill, North Carolina, United States of America, ² Department of Comparative Biosciences, University of Wisconsin-Madison, Madison, Wisconsin, United States of America

Abstract

Disruption of the Hedgehog signaling pathway has been implicated as an important molecular mechanism in the pathogenesis of fetal alcohol syndrome. In severe cases, the abnormalities of the face and brain that result from prenatal ethanol exposure fall within the spectrum of holoprosencephaly. Single allele mutations in the Hh pathway genes *Sonic Hedgehog* (*SHH*) and *GLI2* cause holoprosencephaly with extremely variable phenotypic penetrance in humans. Here, we tested whether mutations in these genes alter the frequency or severity of ethanol-induced dysmorphology in a mouse model. Timed pregnancies were established by mating *Shh*^{+/-} or *Gli2*^{+/-} male mice backcrossed to C57BL/6J strain, with wildtype females. On gestational day 7, dams were treated with two ip doses of 2.9 g/kg ethanol (or vehicle alone), administered four hrs apart. Fetuses were then genotyped and imaged, and the severity of facial dysmorphology was assessed. Following ethanol exposure, mean dysmorphology scores were increased by 3.2- and 6.6-fold in *Shh*^{+/-} and *Gli2*^{+/-} groups, respectively, relative to their wildtype littermates. Importantly, a cohort of heterozygous fetuses exhibited phenotypes not typically produced in this model but associated with severe holoprosencephaly, including exencephaly, median cleft lip, otocephaly, and proboscis. As expected, a correlation between the severity of facial dysmorphology and medial forebrain deficiency was observed in affected animals. While *Shh*^{+/-} and *Gli2*^{+/-} mice have been described as phenotypically normal, these results illustrate a functional haploinsufficiency of both genes in combination with ethanol exposure. By demonstrating an interaction between specific genetic and environmental risk factors, this study provides important insights into the multifactorial etiology and complex pathogenesis of fetal alcohol syndrome and holoprosencephaly.

Citation: Kietzman HW, Everson JL, Sulik KK, Lipinski RJ (2014) The Teratogenic Effects of Prenatal Ethanol Exposure Are Exacerbated by Sonic Hedgehog or Gli2 Haploinsufficiency in the Mouse. PLoS ONE 9(2): e89448. doi:10.1371/journal.pone.0089448

Editor: Colette Kanellopoulos-Langevin, Xavier Bichat Medical School, INSERM-CNRS - Université Paris Diderot, France

Received: October 29, 2013; **Accepted:** January 21, 2014; **Published:** February 19, 2014

Copyright: © 2014 Kietzman et al. This is an open-access article distributed under the terms of the Creative Commons Attribution License, which permits unrestricted use, distribution, and reproduction in any medium, provided the original author and source are credited.

Funding: This work was funded by grant nos. U01-AA017124, U01-AA0216521 and P60-AA011605 grants to KKS from the National Institute on Alcohol Abuse and Alcoholism/NIH and K99DE022101-A1 and R00DE022101-02 grants to RJL from the National Institute of Dental and Craniofacial Research/NIH and a David Baltimore/Broad Foundation Endowment Research Fellowship to HWK. The content of this publication is solely the responsibility of the authors and does not necessarily represent the official views of the National Institutes of Health. The funders had no role in study design, data collection and analysis, decision to publish, or preparation of the manuscript.

Competing Interests: The authors have declared that no competing interests exist.

* E-mail: rjlipinski@wisc.edu

Introduction

Holoprosencephaly (HPE) occurs in approximately 1 in 10,000 live births [1,2] but an observed prevalence of 1 in 250 conceptuses argues that it is one of the most common human developmental abnormalities [3]. Defined by incomplete division of the forebrain and characterized by medial forebrain deficiencies, HPE frequently co-occurs with facial abnormalities, including clefts of the lip and/or palate, microphthalmia, hypotelorism, and midfacial hypoplasia [4]. Notably, in both humans and animal models, these facial phenotypes as well as medial forebrain deficiencies can result from prenatal ethanol exposure [5–7].

The Hedgehog (Hh) signaling pathway is required for midline development of the brain and face [8–10]. *Sonic Hedgehog* (*Shh*) expression in the neuroectoderm of the diencephalon is critical for ventral patterning and expansion of the medial forebrain [11,12]. A subsequently established parallel field of *Shh* expression in the surface ectoderm regulates growth of the adjacently developing midface [9,13]. Genetic and chemical lesions in the Hh signaling

pathway have been shown to cause the characteristic face and brain abnormalities of HPE [14–18]. While multiple mechanisms have been proposed, disruption of the Hh signaling pathway has also been implicated in the genesis of fetal alcohol syndrome (FAS) [19–23].

Mutations in *SHH* are the most commonly identified cause of non-chromosomal HPE, accounting for approximately 12% of such cases [24–26]. Mutations in the GLI-Kruppel family member *GLI2*, which encodes a zinc finger protein that serves as the dominant transcriptional activator of the pathway, have also been associated with HPE [27]. However, even in cases with a known causative gene, HPE is etiologically complex. For example, in a recent analysis of 396 individuals representing 157 unrelated kindreds with *SHH* mutations, only 36% were found to have true HPE [25]. The majority of mutation carriers were classified as unaffected or as having microform HPE (i.e. midline facial abnormalities in the absence of detectable neuroanatomical

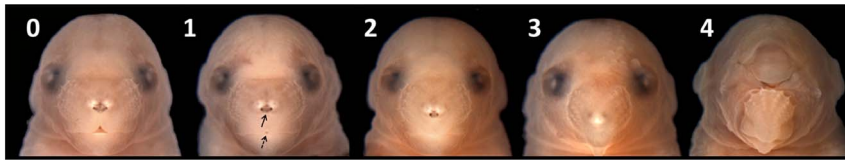


Figure 1. Facial dysmorphology rating scale. Illustrated are a GD 17 fetus having normal facial morphology and 4 fetuses with varying degrees of medial facial deficiency. Numbers assigned to each image (0–4) are scores representing differing degrees of severity of facial dysmorphology. As compared to normal fetuses, those receiving a score of 1 had a notably diminished area of pigmentation between the nostrils (solid arrow) accompanied by reduction in the depth of the normally present median central notch of the upper lip (dashed arrow). A score of 2 was assigned to fetuses that had lost the median lip notch, but still had some remaining pigment at the tip of the nose. Individuals presenting with a single central nostril were assigned a score of 3 and those given a score of 4 had no nostrils.
doi:10.1371/journal.pone.0089448.g001

anomalies). This suggests that gene-gene or gene-environment interactions are operational in the pathogenesis of HPE [28].

Shh^{-/-} mice exhibit severe HPE phenotypes, including a single telencephalic vesicle and proboscis situated above a single central eye [8]. *Gli2*^{-/-} mice fail to develop a floor plate and present with microcephaly, cleft palate, and maxillary and mandibular hypoplasia [29,30]. In contrast, relative to their wildtype littermates, *Shh*^{+/-} and *Gli2*^{+/-} mice are phenotypically unremarkable [27,30]. These animals therefore serve as an ideal model in which to test the influence of environmental factors in the context of human disease-relevant genetic predisposition. Such interactions have been proposed as the basis for numerous complex diseases but identification of specific interacting factors has proven difficult. By demonstrating a functional gene-environment interaction between mutations in *Shh* and *Gli2* and prenatal ethanol exposure, the study described here provides new insights into potential mechanisms contributing to the etiology and pathogenesis of FAS and HPE.

Materials and Methods

Animals and timed matings

This study was carried out in strict accordance with the recommendations in the Guide for the Care and Use of Laboratory Animals of the National Institutes of Health. All procedures involving animals were approved by the University of North Carolina at Chapel Hill Institutional Animal Care and Use Committee (protocol number 13-081.0). C57BL/6J wildtype female mice were purchased from The Jackson Laboratory (Bar Harbor, ME). *Shh*^{+/-} and *Gli2*^{+/-} transgenic mice [8,31] were backcrossed to the C57BL/6J background for more than ten

generations. Two female mice were placed with a single *Shh* or *Gli2* heterozygous male for 2 hrs early in the light cycle and subsequently examined for the presence of copulation plugs, marking gestational day (GD)0. Genotyping was performed as described for *Gli2* mice [30] and using a standard genotyping protocol, “NEOTD,” provided by the Jackson Laboratories and available at <http://jaxmice.jax.org> for *Shh* mice.

Ethanol exposure

Timed-pregnant mice were administered two 25% ethanol (v/v in lactated Ringer’s solution) dosages of 2.9 g/kg by ip injection four hrs apart beginning at GD7 [6,32,33]. Vehicle treated mice received two volume-equivalent doses of Ringer’s solution.

Dissection and imaging

On GD17, pregnant dams were euthanized via CO₂ anesthesia, followed by cervical dislocation. Fetuses were then fixed in formalin (10% in phosphate buffered saline solution) for at least two weeks and then photographed. To ensure consistent orientation, each fetus was stabilized in a wax mold with specific anatomical features of the head carefully aligned to a grid of vertical and horizontal crosshairs. Subsequently, brains were removed from a subset of fetuses by dissection. Images were captured with a MicroPublisher 5.0 camera using QCapture Suite Software.

Assessment of facial dysmorphology

For unbiased assessment of facial dysmorphology, a semi-quantitative scale encompassing the range of severity present in the study population was established (Fig. 1). Based upon a large reference population of untreated wildtype C57BL/6J GD17

Table 1. Facial dysmorphology scores by treatment and genotype.

Treatment	Genotype	Sample Size	Distribution of facial dysmorphology					Sum	Mean
			0	1	2	3	4		
Vehicle	<i>Shh</i> ^{+/+}	22	22	0	0	0	0	0	0
	<i>Shh</i> ^{+/-}	25	25	0	0	0	0	0	0
	<i>Gli2</i> ^{+/+}	34	32	2	0	0	0	2	0.06
	<i>Gli2</i> ^{+/-}	17	16	0	1	0	0	2	0.12
Ethanol	<i>Shh</i> ^{+/+}	28	26	1	0	0	1	5	0.18
	<i>Shh</i> ^{+/-}	47	34	4	5	3	1	27	0.57
	<i>Gli2</i> ^{+/+}	31	29	0	2	0	0	4	0.13
	<i>Gli2</i> ^{+/-}	21	12	4	2	2	1	18	0.86

doi:10.1371/journal.pone.0089448.t001

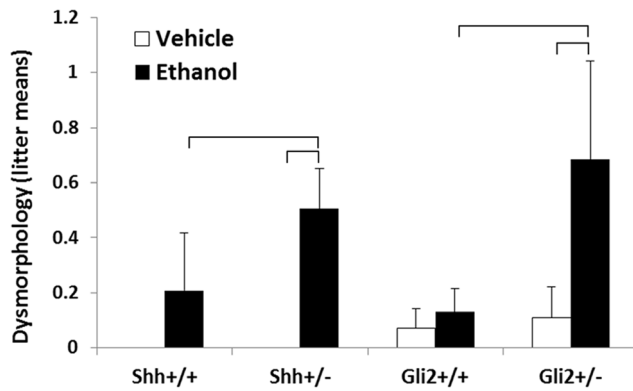


Figure 2. Effect of treatment and genotype on facial dysmorphology. To avoid litter bias, the average dysmorphology score from each genotypic group was determined for each litter in the study population. Values represent the mean plus the standard error of litter averages for each genotype and treatment. Brackets indicate p values of ≤ 0.05 as determined by a one-tailed student's t-test. doi:10.1371/journal.pone.0089448.g002

fetuses, a score of 0 was assigned to apparently normal individuals. Scores of 1–4 were assigned based on visual assessment of degree of medial facial deficiency as evidenced by internasal distance and upper lip morphology. Those fetuses receiving a score of 1 had a notably diminished area of pigmentation between the nostrils (Fig. 1, solid arrow) accompanied by reduction in the depth of the normally present median central notch of the upper lip (Fig. 1, dashed arrow). A score of 2 was assigned to those fetuses that had lost the median lip notch, but still had some remaining pigment at the tip of the nose. Individuals presenting with a single central nostril were assigned a score of 3 and those given a score of 4 had no nostrils. Animals having a median cleft lip were classified based on their nasal appearance. All images were examined by a single rater blinded to treatment and genotype.

Results

Shh^{+/-} or *Gli2*^{+/-} male mice backcrossed to the C57BL/6J background were mated with wildtype females, facilitating direct

comparison between littermates differing only in gene dosage. To examine whether these normally silent mutations alter the frequency or severity of ethanol-induced abnormalities, a well characterized prenatal ethanol exposure paradigm that recapitulates the salient facial features of FAS in wildtype C57BL/6J mice was employed. As previously described, considerable intra- and interlitter variability was observed among ethanol-exposed fetuses, with phenotypes ranging from apparently normal to severely dysmorphic [6]. A semi-quantitative scale based upon the degree of medial facial deficiency was then applied to characterize the severity of facial dysmorphology across the entire study population (Fig. 1).

The distribution of facial dysmorphology by treatment and genotype is shown in Table 1. While ethanol exposure resulted in facial dysmorphology meeting the criteria of the implemented scale only rarely in the wildtype cohort, fetuses having defects representative of the full range of the spectrum of severity were frequently observed in the *Shh*^{+/-} and *Gli2*^{+/-} groups. Comparison of the values listed in table 1 illustrates that ethanol exposure resulted in mean dysmorphology scores that were increased by 3.2 and 6.6 fold in *Shh*^{+/-} and *Gli2*^{+/-} fetuses, respectively, compared to wildtype littermates. To assess statistical differences between groups independent of litter bias, mean dysmorphology scores with litter averages of genotypic cohorts as the unit of measurement were also calculated (Fig. 2). In the *Shh*^{+/-} and *Gli2*^{+/-} groups, ethanol exposure caused a significant increase in mean dysmorphology scores relative to both respective vehicle control groups, as well as ethanol-exposed wildtype groups.

The employed ethanol exposure paradigm is well characterized and has been utilized in numerous studies conducted by the authors of this study [5,6,32–34]. Importantly, a relatively large cohort of fetuses in the population described here exhibited facial abnormalities not commonly observed in affected wildtype C57BL/6J mice. Along with varying degrees of upper midfacial deficiency, fetuses in this subpopulation exhibited exencephaly, apparent anophthalmia, agnathia, and apparent proboscis (Fig. 3). Genotyping revealed that 8 of 9 of fetuses in this subpopulation with severe phenotypes were either *Shh* or *Gli2* heterozygotes.

In studies of both animal models and human populations, the severity of FAS and HPE- associated facial dysmorphology generally corresponds to that of the brain [33,35]. As expected,



Figure 3. Subpopulation of GD17 fetuses exhibiting severe craniofacial phenotypes. Included in the study population were 9 fetuses with phenotypes not typically observed in wildtype C57BL/6J mice exposed to the employed ethanol exposure paradigm (A-I). Single allele mutations in *Shh* or *Gli2* were detected in 8 of 9 fetuses in this severely affected subpopulation. In addition to varying degrees of upper midfacial deficiency, other notable defects included exencephaly (A), iridial coloboma and microphthalmia (A-D), apparent anophthalmia (E, G, I), agnathia (E), micrognathia (A-D, F-I), and proboscis (I). Median cleft lip was also observed (B, C). Within this subpopulation, fetuses were assigned dysmorphology scores as follows: 2 (A), 3 (B-F), 4 (G-I). doi:10.1371/journal.pone.0089448.g003

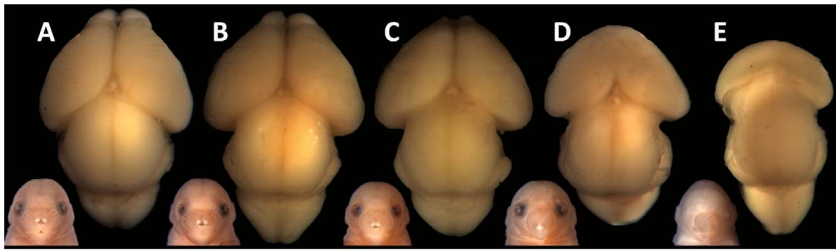


Figure 4. Facial dysmorphism predicts medial forebrain deficiency. Superior views of dissected brains are shown for a normal fetus (A) and for representative examples of each category of facial dysmorphism (B-E). Medial facial deficiency was associated with increasing hypoplasia of the cerebral cortices (B-E), increasing hypoplasia (B, C) or absence of the olfactory bulbs (D, E), and incomplete division of the forebrain (D, E). doi:10.1371/journal.pone.0089448.g004

the degree of medial forebrain deficiency directly correlated with increasing category of facial dysmorphism among fetuses in this study population (Fig. 4). True HPE, as defined by incomplete division of the forebrain, was observed in fetuses in the most severe upper midfacial deficiency categories.

Discussion

While *Shh*^{+/-} and *Gli2*^{+/-} mice have no apparent phenotype, single allele mutations of these genes in human populations cause HPE with incomplete penetrance or variable expressivity. The findings of the study reported here illustrate that in the mouse, both *Shh* and *Gli2* are functionally haploinsufficient when combined with prenatal ethanol exposure. While mice utilized in biomedical research are maintained in a highly controlled environment, human populations are subject to myriad environmental influences, potentially including ethanol exposure. Thus, demonstration that these genetic lesions lend a predisposition to a near-ubiquitous environmental influence offers new insight into the apparent discrepancy between findings from mouse models versus human populations.

This study follows recent work demonstrating that mutations in *Cdon* exacerbate the effects of prenatal ethanol exposure, producing severe HPE phenotypes in mice [36]. While primarily studied as a co-receptor for the Shh ligand, *Cdon* is known to be multifunctional with some Hh-independent activity. Promiscuity of receptor activity left the authors to speculate that the observed interaction between *Cdon* mutation and ethanol exposure may be mediated through effects on the Nodal or BMP signaling pathways, which have also been implicated in the pathogenesis of HPE [37,38]. By directly examining the interaction between mutations in two genes essential for signal transduction, the findings reported here strongly support the premise that Hh signaling-related genetic lesions directly lend a functional predisposition to the effects of prenatal ethanol exposure.

These findings support the premise that a lower threshold of ethanol exposure is sufficient to cause clinically significant abnormalities in fetuses with genetic mutations in the Hh signaling pathway. However, each of these studies employed a binge model of early prenatal ethanol exposure, which has been reported to result in peak blood ethanol concentrations above 0.04 g/dl [6]. Translation of these findings would benefit by future studies

examining the dose-response relationship of ethanol exposure in models of relevant genetic predisposition.

The severity of abnormalities in children exposed prenatally to ethanol appears to depend upon variables beyond the level of exposure itself [39,40]. Animal studies have confirmed that the teratogenic effects of ethanol vary depending upon genetic background [22,41–44] spurring efforts directed at identifying genetic factors that may predispose the fetus to ethanol teratogenicity [45,46]. In this regard the results of the present study, along with those of others, strongly argue that additional research examining genetic lesions in the Hh pathway is warranted. Designed to isolate the impact of heterozygosity on embryonic sensitivity to ethanol exposure, for this study *Shh* and *Gli2* null alleles were backcrossed to the C57BL/6J background and heterozygous males were mated with wildtype females. Examination of potential maternal effects of these mutations and whether the demonstrated haploinsufficiency is affected by background strain was not within the scope of this study but would be an interesting future direction as well.

Most diseases result from an interaction of genetic and environmental influences but identification of specific interacting influences has remained largely elusive. The significance of the findings presented here is highlighted by the clinical relevance of the identified interacting factors. Mutations in *SHH* are the most commonly identified cause of non-chromosomal HPE, while it is estimated that 7.6% of women in the United States consume ethanol while pregnant [47]. By demonstrating an interaction between prenatal ethanol exposure and genes in the Hh pathway, this study provides important insights into the multifactorial etiology and pathogenesis of both FAS and HPE.

Acknowledgments

This study was conducted at the UNC Bowles Center for Alcohol Studies as part of the Collaborative Initiative on Fetal Alcohol Spectrum Disorders and as part of the Carolina Institute for Developmental Disabilities. The authors thank Shonagh O'Leary-Moore for assistance with fetal brain dissections.

Author Contributions

Conceived and designed the experiments: RJL KKS. Performed the experiments: HWK JLE RJL. Analyzed the data: RJL KKS. Wrote the paper: RJL KKS HWK JLE.

References

1. Leoncini E, Baranello G, Orioli IM, Anneren G, Bakker M, et al. (2008) Frequency of holoprosencephaly in the International Clearinghouse Birth Defects Surveillance Systems: searching for population variations. Birth defects research Part A, Clinical and molecular teratology 82: 585–591.
2. Orioli IM, Castilla EE (2010) Epidemiology of Holoprosencephaly: Prevalence and Risk Factors. American Journal of Medical Genetics Part C-Seminars in Medical Genetics 154C: 13–21.
3. Matsunaga E, Shiota K (1977) Holoprosencephaly in human embryos: epidemiologic studies of 150 cases. Teratology 16: 261–272.

4. Solomon BD, Pineda-Alvarez DE, Mercier S, Raam MS, Odent S, et al. (2010) Holoprosencephaly flashcards: A summary for the clinician. *Am J Med Genet C Semin Med Genet* 154C: 3–7.
5. Sulik KK, Johnston MC (1982) Embryonic origin of holoprosencephaly: interrelationship of the developing brain and face. *Scanning electron microscopy*: 309–322.
6. Godin EA, O'Leary-Moore SK, Khan AA, Parnell SE, Ament JJ, et al. (2010) Magnetic resonance microscopy defines ethanol-induced brain abnormalities in prenatal mice: effects of acute insult on gestational day 7. *Alcohol Clin Exp Res* 34: 98–111.
7. Siebert JR, Astley SJ, Clarren SK (1991) Holoprosencephaly in a fetal macaque (*Macaca nemestrina*) following weekly exposure to ethanol. *Teratology* 44: 29–36.
8. Chiang C, Litingtung Y, Lee E, Young KE, Corden JL, et al. (1996) Cyclopia and defective axial patterning in mice lacking Sonic hedgehog gene function. *Nature* 383: 407–413.
9. Marcucio RS, Cordero DR, Hu D, Helms JA (2005) Molecular interactions coordinating the development of the forebrain and face. *Developmental biology* 284: 48–61.
10. Jeong J, Mao J, Tenzen T, Kottmann AH, McMahon AP (2004) Hedgehog signaling in the neural crest cells regulates the patterning and growth of facial primordia. *Genes & development* 18: 937–951.
11. Echelard Y, Epstein DJ, Sijacques B, Shen L, Mohler J, et al. (1993) Sonic-Hedgehog, a Member of a Family of Putative Signaling Molecules, Is Implicated in the Regulation of Cns Polarity. *Cell* 75: 1417–1430.
12. Fuccillo M, Rallu M, McMahon AP, Fishell G (2004) Temporal requirement for hedgehog signaling in ventral telencephalic patterning. *Development* 131: 5031–5040.
13. Hu D, Marcucio RS (2009) A SHH-responsive signaling center in the forebrain regulates craniofacial morphogenesis via the facial ectoderm. *Development* 136: 107–116.
14. Ribeiro LA, Queizi RG, Nascimento A, Bertolacini CP, Richieri-Costa A (2010) Holoprosencephaly and holoprosencephaly-like phenotype and GAS1 DNA sequence changes: Report of four Brazilian patients. *American journal of medical genetics Part A* 152A: 1688–1694.
15. Bae GU, Domene S, Roessler E, Schachter K, Kang JS, et al. (2011) Mutations in CDON, encoding a hedgehog receptor, result in holoprosencephaly and defective interactions with other hedgehog receptors. *American journal of human genetics* 89: 231–240.
16. Pineda-Alvarez DE, Roessler E, Hu P, Srivastava K, Solomon BD, et al. (2012) Missense substitutions in the GAS1 protein present in holoprosencephaly patients reduce the affinity for its ligand, SHH. *Human genetics* 131: 301–310.
17. Ribeiro LA, Murray JC, Richieri-Costa A (2006) PTCH mutations in four Brazilian patients with holoprosencephaly and in one with holoprosencephaly-like features and normal MRI. *American journal of medical genetics Part A* 140: 2584–2586.
18. Lipinski RJ, Godin EA, O'Leary-Moore SK, Parnell SE, Sulik KK (2010) Genesis of teratogen-induced holoprosencephaly in mice. *American journal of medical genetics Part C, Seminars in medical genetics* 154C: 29–42.
19. Ahlgren SC, Thakur V, Bronner-Fraser M (2002) Sonic hedgehog rescues cranial neural crest from cell death induced by ethanol exposure. *Proceedings of the National Academy of Sciences of the United States of America* 99: 10476–10481.
20. Yamada Y, Nagase T, Nagase M, Koshima I (2005) Gene expression changes of sonic hedgehog signaling cascade in a mouse embryonic model of fetal alcohol syndrome. *The Journal of craniofacial surgery* 16: 1055–1061; discussion 1062–1053.
21. Li YX, Yang HT, Zdanowicz M, Sicklick JK, Qi Y, et al. (2007) Fetal alcohol exposure impairs Hedgehog cholesterol modification and signaling. *Lab Invest* 87: 231–240.
22. Aoto K, Shikata Y, Higashiyama D, Shiota K, Motoyama J (2008) Fetal ethanol exposure activates protein kinase A and impairs Shh expression in prechordal mesoderm cells in the pathogenesis of holoprosencephaly. *Birth defects research Part A, Clinical and molecular teratology* 82: 224–231.
23. Zhang CJ, Turton QM, Mackinnon S, Sulik KK, Cole GJ (2011) Agrin Function Associated with Ocular Development is a Target of Ethanol Exposure in Embryonic Zebrafish. *Birth Defects Research Part a-Clinical and Molecular Teratology* 91: 129–141.
24. Nanni L, Ming JE, Bocian M, Steinhaus K, Bianchi DW, et al. (1999) The mutational spectrum of the sonic hedgehog gene in holoprosencephaly: SHH mutations cause a significant proportion of autosomal dominant holoprosencephaly. *Hum Mol Genet* 8: 2479–2488.
25. Solomon BD, Bear KA, Wyllic A, Keaton AA, Dubourg C, et al. (2012) Genotypic and phenotypic analysis of 396 individuals with mutations in Sonic Hedgehog. *Journal of medical genetics* 49: 473–479.
26. Pineda-Alvarez DE, Dubourg C, David V, Roessler E, Muenke M (2010) Current recommendations for the molecular evaluation of newly diagnosed holoprosencephaly patients. *Am J Med Genet C Semin Med Genet* 154C: 93–101.
27. Roessler E, Du YZ, Mullor JL, Casas E, Allen WP, et al. (2003) Loss-of-function mutations in the human GLI2 gene are associated with pituitary anomalies and holoprosencephaly-like features. *Proceedings of the National Academy of Sciences of the United States of America* 100: 13424–13429.
28. Edison R, Muenke M (2003) The interplay of genetic and environmental factors in craniofacial morphogenesis: holoprosencephaly and the role of cholesterol. *Congenit Anom (Kyoto)* 43: 1–21.
29. Ding Q, Motoyama J, Gasca S, Mo R, Sasaki H, et al. (1998) Diminished Sonic hedgehog signaling and lack of floor plate differentiation in Gli2 mutant mice. *Development* 125: 2533–2543.
30. Mo R, Freer AM, Ziyk DL, Crackower MA, Michaud J, et al. (1997) Specific and redundant functions of Gli2 and Gli3 zinc finger genes in skeletal patterning and development. *Development* 124: 113–123.
31. Matise MP, Epstein DJ, Park HL, Platt KA, Joyner AL (1998) Gli2 is required for induction of floor plate and adjacent cells, but not most ventral neurons in the mouse central nervous system. *Development* 125: 2759–2770.
32. Sulik KK, Johnston MC, Webb MA (1981) Fetal alcohol syndrome: embryogenesis in a mouse model. *Science* 214: 936–938.
33. Lipinski RJ, Hammond P, O'Leary-Moore SK, Ament JJ, Pecevich SJ, et al. (2012) Ethanol-induced face-brain dysmorphology patterns are correlative and exposure-stage dependent. *PLoS One* 7: e43067.
34. Godin EA, Dehart DB, Parnell SE, O'Leary-Moore SK, Sulik KK (2011) Ventromedian forebrain dysgenesis follows early prenatal ethanol exposure in mice. *Neurotoxicology and teratology* 33: 231–239.
35. Demyer W, Zeman W, Palmer CG (1964) The Face Predicts the Brain: Diagnostic Significance of Median Facial Anomalies for Holoprosencephaly (Arhinencephaly). *Pediatrics* 34: 256–263.
36. Hong M, Krauss RS (2012) Cdon mutation and fetal ethanol exposure synergize to produce midline signaling defects and holoprosencephaly spectrum disorders in mice. *PLoS genetics* 8: e1002999.
37. Roessler E, Pei W, Ouspenskaia MV, Karkera JD, Velez JI, et al. (2009) Cumulative ligand activity of NODAL mutations and modifiers are linked to human heart defects and holoprosencephaly. *Mol Genet Metab* 98: 225–234.
38. Klingensmith J, Matsui M, Yang YP, Anderson RM (2010) Roles of bone morphogenetic protein signaling and its antagonism in holoprosencephaly. *Am J Med Genet C Semin Med Genet* 154C: 43–51.
39. May PA, Tabachnick BG, Gossage JP, Kalberg WO, Marais AS, et al. (2011) Maternal risk factors predicting child physical characteristics and dysmorphology in fetal alcohol syndrome and partial fetal alcohol syndrome. *Drug Alcohol Depend* 119: 18–27.
40. May PA, Tabachnick BG, Gossage JP, Kalberg WO, Marais AS, et al. (2013) Maternal factors predicting cognitive and behavioral characteristics of children with fetal alcohol spectrum disorders. *J Dev Behav Pediatr* 34: 314–325.
41. Downing C, Balderrama-Durbin C, Broncucia H, Gilliam D, Johnson TE (2009) Ethanol teratogenesis in five inbred strains of mice. *Alcoholism, clinical and experimental research* 33: 1238–1245.
42. Higashiyama D, Saito H, Komada M, Takigawa T, Ishibashi M, et al. (2007) Sequential developmental changes in holoprosencephalic mouse embryos exposed to ethanol during the gastrulation period. *Birth defects research Part A, Clinical and molecular teratology* 79: 513–523.
43. Loucks EJ, Ahlgren SC (2009) Deciphering the role of Shh signaling in axial defects produced by ethanol exposure. *Birth defects research Part A, Clinical and molecular teratology* 85: 556–567.
44. Li YX, Yang HT, Zdanowicz M, Sicklick JK, Qi Y, et al. (2007) Fetal alcohol exposure impairs Hedgehog cholesterol modification and signaling. *Laboratory investigation; a journal of technical methods and pathology* 87: 231–240.
45. Viljoen DL, Carr LG, Foroud TM, Brooke L, Ramsay M, et al. (2001) Alcohol dehydrogenase-2*2 allele is associated with decreased prevalence of fetal alcohol syndrome in the mixed-ancestry population of the Western Cape Province, South Africa. *Alcohol Clin Exp Res* 25: 1719–1722.
46. Mattson SN, Foroud T, Sowell ER, Jones KL, Coles CD, et al. (2010) Collaborative initiative on fetal alcohol spectrum disorders: methodology of clinical projects. *Alcohol* 44: 635–641.
47. Centers for Disease C, Prevention (2012) Alcohol use and binge drinking among women of childbearing age—United States, 2006–2010. *MMWR Morb Mortal Wkly Rep* 61: 534–538.