

RESEARCH ARTICLE

Usefulness of fecal calprotectin for the early prediction of short-term outcomes of remission-induction treatments in ulcerative colitis in comparison with two-item patient-reported outcome

Takahiko Toyonaga^{1,2}, Taku Kobayashi^{1*}, Masaru Nakano², Eiko Saito¹, Satoko Umeda², Shinji Okabayashi¹, Ryo Ozaki², Toshifumi Hibi¹

1 Center for Advanced IBD Research and Treatment, Kitasato University Kitasato Institute Hospital, Minato-ku, Tokyo, Japan, **2** Department of Gastroenterology, Kitasato University Kitasato Institute Hospital, Minato-ku, Tokyo, Japan

* kobataku@insti.kitasato-u.ac.jp



OPEN ACCESS

Citation: Toyonaga T, Kobayashi T, Nakano M, Saito E, Umeda S, Okabayashi S, et al. (2017) Usefulness of fecal calprotectin for the early prediction of short-term outcomes of remission-induction treatments in ulcerative colitis in comparison with two-item patient-reported outcome. PLoS ONE 12(9): e0185131. <https://doi.org/10.1371/journal.pone.0185131>

Editor: Emiko Mizoguchi, Kurume University School of Medicine, JAPAN

Received: August 11, 2017

Accepted: September 6, 2017

Published: September 21, 2017

Copyright: © 2017 Toyonaga et al. This is an open access article distributed under the terms of the [Creative Commons Attribution License](https://creativecommons.org/licenses/by/4.0/), which permits unrestricted use, distribution, and reproduction in any medium, provided the original author and source are credited.

Data Availability Statement: Data are available from doi:[10.5061/dryad.5gd04](https://doi.org/10.5061/dryad.5gd04).

Funding: This work was in part supported by Thermo Fisher Scientific Inc. Thermo Fisher Scientific Inc. helped data collection by measuring fecal calprotectin. There was no additional external funding received for this study.

Competing interests: I have read the journal's policy and the authors of this manuscript have the

Abstract

Background

Fecal calprotectin (FC) is well accepted as a non-invasive biomarker which objectively reflects colonic inflammation in ulcerative colitis (UC). However, its value as a marker of response during the early phase of remission induction treatment has not been well studied. The aim of this study is to evaluate the significance of FC for predicting the short-term outcomes of remission induction treatment in patients with UC.

Methods

A prospective observational study was conducted among 31 patients with active UC. FC was monitored with two-item patient-reported outcome (PRO2), partial Mayo score (PMS), and Lichtiger clinical activity index (CAI) during the first 4 weeks of remission induction treatment. Clinical response was defined as a decrease in CAI of 3 or more points below baseline. Mucosal healing (MH) was defined as Mayo endoscopic subscore 0 or 1. Within-day and within-stool variability of FC were assessed during the first week of treatment.

Results

In week 4-clinical responders, PRO2, PMS, and CAI significantly decreased from day 3, however, FC did not show significant reduction until week 2. Among all markers, the decrease in PRO2 at week 4 most accurately predicted MH at week 12. Within-day variability of FC was remarkably wide even at the first week in clinical responders. Within-stool variability was extremely small.

following competing interests: This work was in part supported by Thermo Fisher Scientific Inc. T. Kobayashi receives consulting fees from Alfresa Pharma and Mochida Pharmaceutical and lecture fees from Mochida Pharmaceutical. T. Hibi receives research support from Mochida Pharmaceutical. This does not alter our adherence to PLOS ONE policies on sharing data and materials.

Conclusions

PRO2 predicted the short-term outcomes of remission induction treatment earlier than FC possibly because of the wide within-day variability of FC in active UC.

Introduction

Ulcerative colitis (UC) is a chronic and relapsing-remitting disease characterized by colonic inflammation with poorly defined etiology [1]. Various drugs are helpful for the treatment of UC, however, some patients are refractory to the treatment and others relapse even after once achieving remission [2]. Therefore, monitoring disease activity is an important aspect in the management of UC for evaluating treatment efficacy and predicting future relapse. Especially, in patients with acute severe disease, precise evaluation of treatment efficacy during the early phase of remission induction treatment is imperative to avoid life-threatening condition with delayed surgery. However, judging treatment efficacy during this period is difficult and has been relied on physician's evaluation in clinical practice because of the lack of established tools for monitoring disease activity.

Increasing reports showed the usefulness of fecal calprotectin (FC) as a biomarker for distinguishing inflammatory bowel disease (IBD) consisting of UC and Crohn's disease from irritable bowel syndrome, evaluating treatment response, and predicting MH and relapses in patients with IBD [3–6]. Thus, FC is now expected to be a non-invasive alternative to colonoscopy in the management of UC, and often used in recent clinical trials to evaluate treatment efficacy in patients with UC [7, 8]. However, it remains uncertain whether FC is useful in detecting response during the early phase, especially during the first or second week of remission induction treatment. It should also be noted that several reports showed high within-day and within-stool variability of FC in patients with active UC [9–11], which casts doubt on the usefulness of FC to monitor disease activity and detect treatment response during remission induction treatment.

In this study, we focused on the initial response to remission induction treatment in patients with UC, and evaluated the usefulness of FC in comparison with patient-reported outcome (PRO) as a marker of response during the early phase of treatment.

Materials and methods

Patients

A prospective observational study was conducted from September 2014 to April 2016 among 31 patients with established diagnosis of UC. For monitoring FC during remission induction treatments, 126 stool samples were collected from 27 patients with active UC prior to, 3, 7, 14, and 28 days after remission induction treatment. Total colonoscopy was performed at 12 weeks after treatment if possible to evaluate colonic mucosal status. One of 27 patients was enrolled in the study but excluded from subsequent analyses since she needed additional medical treatment before day 28 because of inadequate response to induction treatment. For evaluating within-day variability of FC, 28 fecal samples were collected from 4 patients with active UC, three of whom were enrolled twice before and a week after remission induction treatment. Fecal samples were collected throughout the day, immediately after waking-up (Morning: M), after breakfast (B), lunch (L), and dinner (D). For evaluating within-stool variability of FC, samples were collected from 2 different areas of each feces.

Clinical activity score

Clinical activity was evaluated by two-item PRO (PRO2) extracted from Mayo score [12], CAI, and partial Mayo score (PMS) consisting of PRO2 and physician's global assessment (PGA) score. Since there is no 'clinical response' established in PRO2, it was defined as a decrease in CAI at least three points below baseline as described previously [13]. Patients with a decrease in CAI less than 3 points or those who needed additional treatment because of inadequate response to initial induction treatment were defined as non-responders.

Endoscopic severity score

All colonoscopic examinations were performed by experienced colonoscopists, blinded to the results of FC. Endoscopic severity was evaluated by Mayo endoscopic subscore (MES), and MH was defined as MES 0 or 1 as described previously [14].

Stool samples

Collected stool samples were stored at -20°C until FC was subsequently measured by Fluoro Enzyme Immunoassay using EliA Calprotectin 2.

Statistical analysis

All numerical data are expressed as means with SD. Differences between paired two groups were analyzed using a Wilcoxon signed-rank test. Patient's baseline characteristics were compared using Fisher's exact test or Mann-Whitney U test. Receiver operating characteristic (ROC) analysis was used to evaluate the relationship of MH with clinical activity indices and FC, and to determine the cut-off levels that achieved the highest summation of sensitivity and specificity. Friedman's test with post-hoc analysis of Dunn's multiple comparison test was used to compare FC among each sample collection time in a single day. Within-day and within-stool variability of FC were evaluated by calculating coefficient of variation (CV). Pearson's correlation coefficient was also used for evaluating within-stool variability of FC by analyzing correlation in FC between 2 separate samples from each feces. A *p* value of less than 0.05 was considered significant. The GraphPad Prism version 6.0 software (GraphPad Software Inc., San Diego, California, USA) was used for data analysis.

Ethical considerations

The study was conducted in accordance with the Declaration of Helsinki and Good Clinical Practice. The study protocol was approved by the institutional review board at Kitasato University Kitasato Institute Hospital (approval number: 14047). All patients provided written informed consent.

Results

Clinical activity scores detected treatment response earlier than FC during remission induction treatment

Among the enrolled 27 patients, 21 patients showed clinical response to the remission induction treatment at 4 weeks after treatment. The baseline characteristics are shown in Table 1. Week 4-clinical responders showed significantly higher PMS and PRO2 at baseline than non-responders. Thirteen patients were treated with oral steroids, 3 with infliximab, 3 with adalimumab, and 2 with oral tacrolimus. These clinical responders did not show statistically significant decrease in FC until 2 weeks after treatment (FC, 236.4 ± 315.5 , 149.0 ± 274.6 , and

Table 1. Patient’s baseline characteristics.

	responder	non-responder	P value
total number	21	6	
Gender, male/female, n (%)	14 (66.7)/7 (33.3)	4 (66.7)/2(33.3)	1.000 ^a
Age, mean (SD)	43.8 (15.8)	33.2 (11.1)	0.200 ^b
Disease duration (years), mean (SD)	9.5 (8.6)	7.7 (5.2)	0.988 ^b
Disease extent, left-side/extensive, n (%)	5 (23.8)/16 (76.2)	3 (50.0)/3 (50.0)	0.319 ^a
Lichtiger clinical activity index, mean (SD)	11.2 (2.3)	8.8 (2.7)	0.058 ^b
pMayo score, mean (SD)	6.7 (1.4)	5.0 (1.3)	0.017 ^b
PRO2, mean (SD)	4.3 (1.2)	3.0 (1.0)	0.030 ^b
FC (µg/g), mean (SD)	7274.0 (7888.0)	17231.3 (25239.9)	0.681 ^b
Remission induction treatment (PSL/IFX/ADA/Tacrolimus)	13/3/3/2	1/3/0/3	
Concomitant treatment (5-ASA/IM/PSL/IFX)	20/9/2/1	5/4/0/0	

PRO2, two-item patient-reported outcome; FC, fecal calprotectin; PSL, prednisolone; IFX, infliximab; ADA, adalimumab; IM, immunomodulator;

^a Fisher’s exact test,

^b Mann-Whitney U test

<https://doi.org/10.1371/journal.pone.0185131.t001>

47.9 ± 67.0% of baseline at day 3, week 1, and week 2, respectively, Fig 1A). In contrast, they showed rapid and significant decrease in PRO2, PGA score, PMS, and CAI from day 3 after remission induction treatment (Fig 1B).

Decrease in PRO2 at week 4 most accurately predicted week 12-mucosal healing

Then we assessed whether the changes in FC and clinical activity scores during the first 4 weeks of remission induction treatment can predict subsequent MH. We compared FC and clinical activity scores during 4 weeks between patients with MH and those without MH at 12 weeks after treatment. As shown in Fig 2A, there was a significant difference in week 4-CAI but not PMS and FC between these two groups. When PGA item was removed from PMS, the resulting PRO2 was significantly lower at week 4 in patients with week 12-MH than those without. There was no significant difference in week 4-PGA score between two groups (0.40 ± 0.55 vs. 0.78 ± 0.67 in patients with and without week 12-MH, respectively, p = 0.41). Similarly, patients with week 12-MH showed statistically significant decrease in PRO2 and CAI but not FC below baseline at week 4 compared to those without MH (Fig 2B). ROC analysis demonstrated that week 4-PRO2 and CAI, and decrease in these scores accurately predicted week 12-MH (Fig 3A–3D). PRO2 0 or 1 predicted MH with sensitivity 1.00, specificity 0.56, positive predictive value (PPV) 0.56, and negative predictive value (NPV) 1.00. Decrease in PRO2 of 3 or more below baseline predicted MH with sensitivity 1.00, specificity 0.67, PPV 0.63, and NPV 1.00. CAI below 3 predicted MH with sensitivity 1.00, specificity 0.78, PPV 0.72, and NPV 1.00. Decrease in CAI of 8 or more below baseline predicted MH with sensitivity 0.80, specificity 0.89, PPV 0.80, NPV 0.89 (Table 2). Among these scores, decrease in PRO2 at week 4 most accurately predicted subsequent MH with the highest AUC value of 0.92 (Fig 3B).

Fecal calprotectin showed wide within-day but small within-stool variability in active UC

We hypothesized that the wide intra-individual variation of FC during the early phase of induction treatment might impair its reliability for the early detection of treatment response

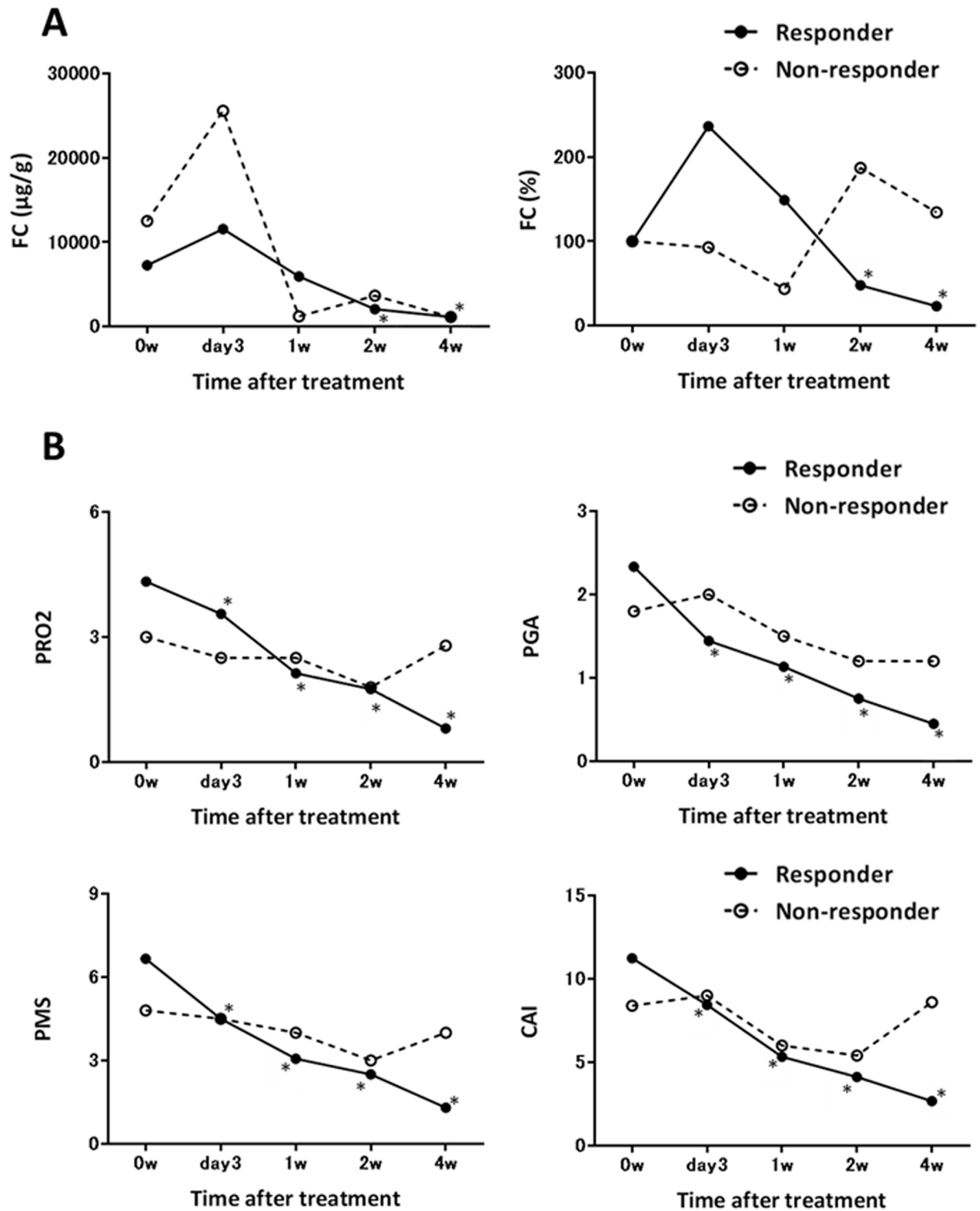


Fig 1. Time-dependent changes in (A) fecal calprotectin (FC), (B) two-item patient-reported outcome (PRO2) and physician's global assessment (PGA) score from Mayo score, partial Mayo score (PMS), and Lichtiger clinical activity index (CAI) during the first 4 weeks of remission induction therapy. Each circle shows the mean value of week 4-clinical responders (open circle with solid line) and non-responders (filled circle with dotted line) at each time point. Statistical significance was determined by a Wilcoxon signed-rank test. * $p < 0.05$ compared to the baseline of week 4-clinical responder.

<https://doi.org/10.1371/journal.pone.0185131.g001>

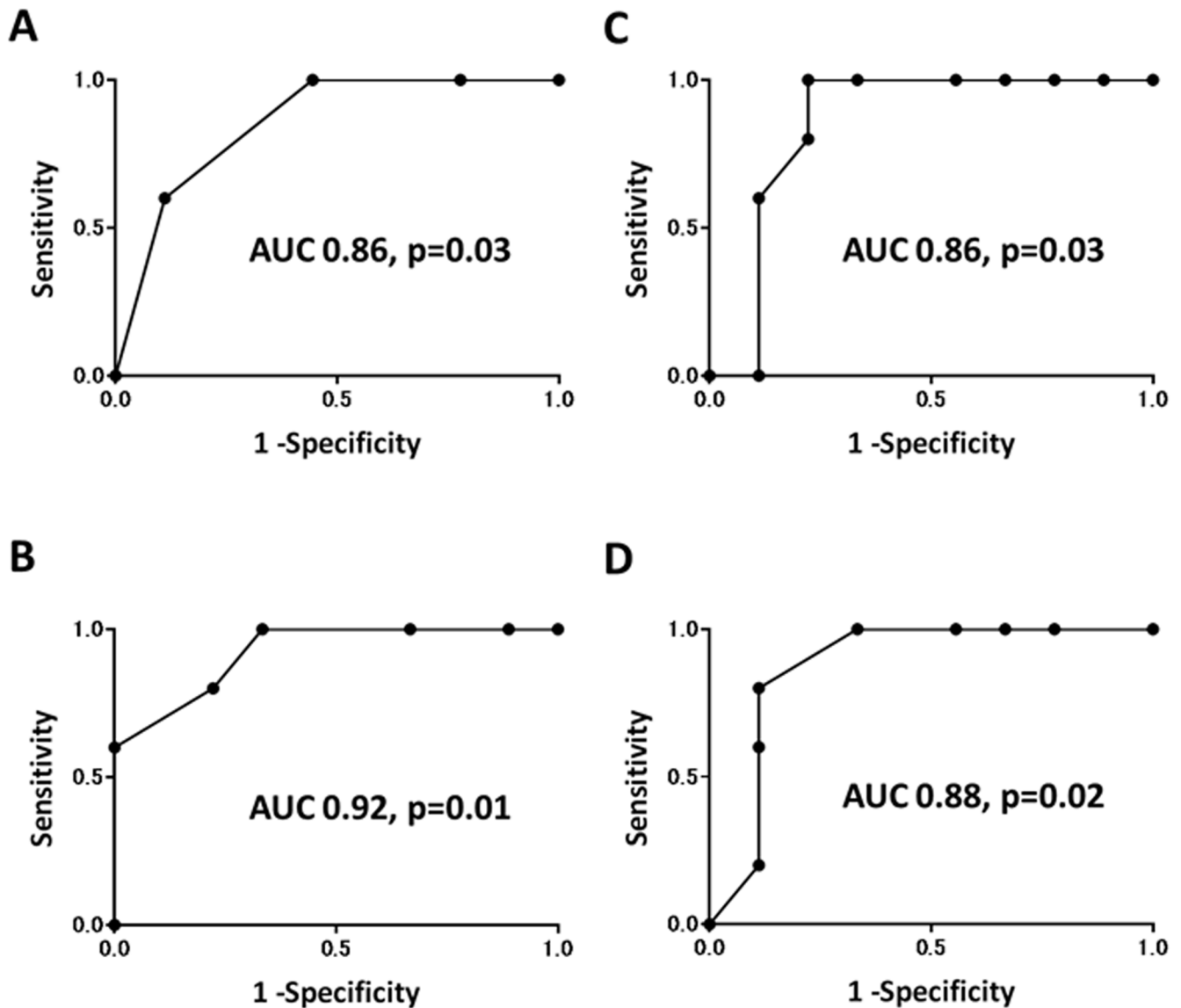


Fig 3. Receiver operating characteristic curves for mucosal healing versus (A) two-item patient-reported outcome (PRO2), (B) decrease in PRO2 below baseline, (C) Lichtiger clinical activity index (CAI), and (D) decrease in CAI below baseline.

<https://doi.org/10.1371/journal.pone.0185131.g003>

(M, 5434.0 ± 4742.3 ; B, 6682.7 ± 7968.0 ; L, 5823.7 ± 6669.3 ; D, 5810.6 ± 8496.3 $\mu\text{g/g}$, Fig 4B). Two of 3 patients were week 4-clinical responders, however, fecal samples provided at week 1 still presented wide within-day variability (#2, #3, and #4 in Fig 4A). To confirm that this daily variation of FC was not caused by technical issue or heterogeneity of each feces, we next assessed within-stool variability of FC by collecting 2 samples from different areas of each feces. As a result, we found small within-stool variability with mean CV of $17.6 \pm 17.2\%$, and Pearson's correlation coefficient showed an extremely close correlation between 2 samples from different parts of each feces ($r = 0.98$, $p < 0.0001$) (Fig 4C). These results suggested that intra-individual variability might contribute to the wide variation of FC in patients with active UC during the early phase, especially within the first week, of remission induction treatment.

Table 2. Sensitivity and specificity for week 12-mucosal healing with different cut-off of patient-reported outcome (PRO2) and Lichtiger clinical activity index (CAI) at week 4.

	Sensitivity	Specificity	Summation
PRO2			
< 0.5	0.60	0.89	1.49
< 1.5	1.00	0.56	1.56
< 3.0	1.00	0.22	1.22
ΔPRO2			
> 0.0	1.00	0.11	1.11
> 1.5	1.00	0.33	1.33
> 2.5	1.00	0.67	1.67
> 3.5	0.80	0.78	1.58
> 4.5	0.60	1.00	1.60
CAI			
< 1.5	0.60	0.89	1.49
< 2.5	0.80	0.78	1.58
< 3.5	1.00	0.78	1.78
< 4.5	1.00	0.67	1.67
< 5.5	1.00	0.44	1.44
ΔCAI			
> 4.5	1.00	0.44	1.44
> 6.5	1.00	0.67	1.67
> 8.5	0.80	0.89	1.69
> 9.5	0.60	0.89	1.49
> 11	0.20	0.89	1.09

<https://doi.org/10.1371/journal.pone.0185131.t002>

Discussion

FC is an easily accessible and promising biomarker in the management of UC which might be useful in various clinical situations. However, the findings of the present study proposed the limitation of FC for predicting the short-term outcomes of induction treatment in patients with active UC. FC showed remarkably wide within-day variability in patients with active UC, and of note, it varied widely during the early phase of remission induction treatment even in clinical responders. PRO2 was superior to FC in detecting treatment response during the first week and predicting subsequent MH, which in other words, highlights the importance of close follow-up of clinical symptoms rather than relying too much on FC in this setting.

FC is currently widely accepted as a non-invasive alternative to colonoscopy which reflects colonic inflammation. FC can reflect not only the degree but also the extent of colonic inflammation, and thus is a useful tool to evaluate the status of the entire colon [15]. Furthermore, FC is reported to be useful to detect MH, although there is no consensus on the cut-off value [15, 16]. These data clearly demonstrated that FC is helpful in assessing inflammatory status in patients with UC. However, it still remains uncertain whether FC is reliable in monitoring short-term changes of disease activity especially after therapeutic intervention. Recent clinical trials often utilize FC to evaluate treatment efficacy and showed its significant decrease in clinical responders [7, 8], however, these trials compared FC prior to and several weeks after treatment. Precisely determining treatment response at the earlier time points, such as 1 or 2 weeks after treatment, is extremely important in patients with acute severe disease [17]. Nevertheless, its value as a marker of response during this period has not been well-studied yet. Theede et al. monitored FC in 16 patients with UC during 4 weeks after treatment with PSL [18]. Although

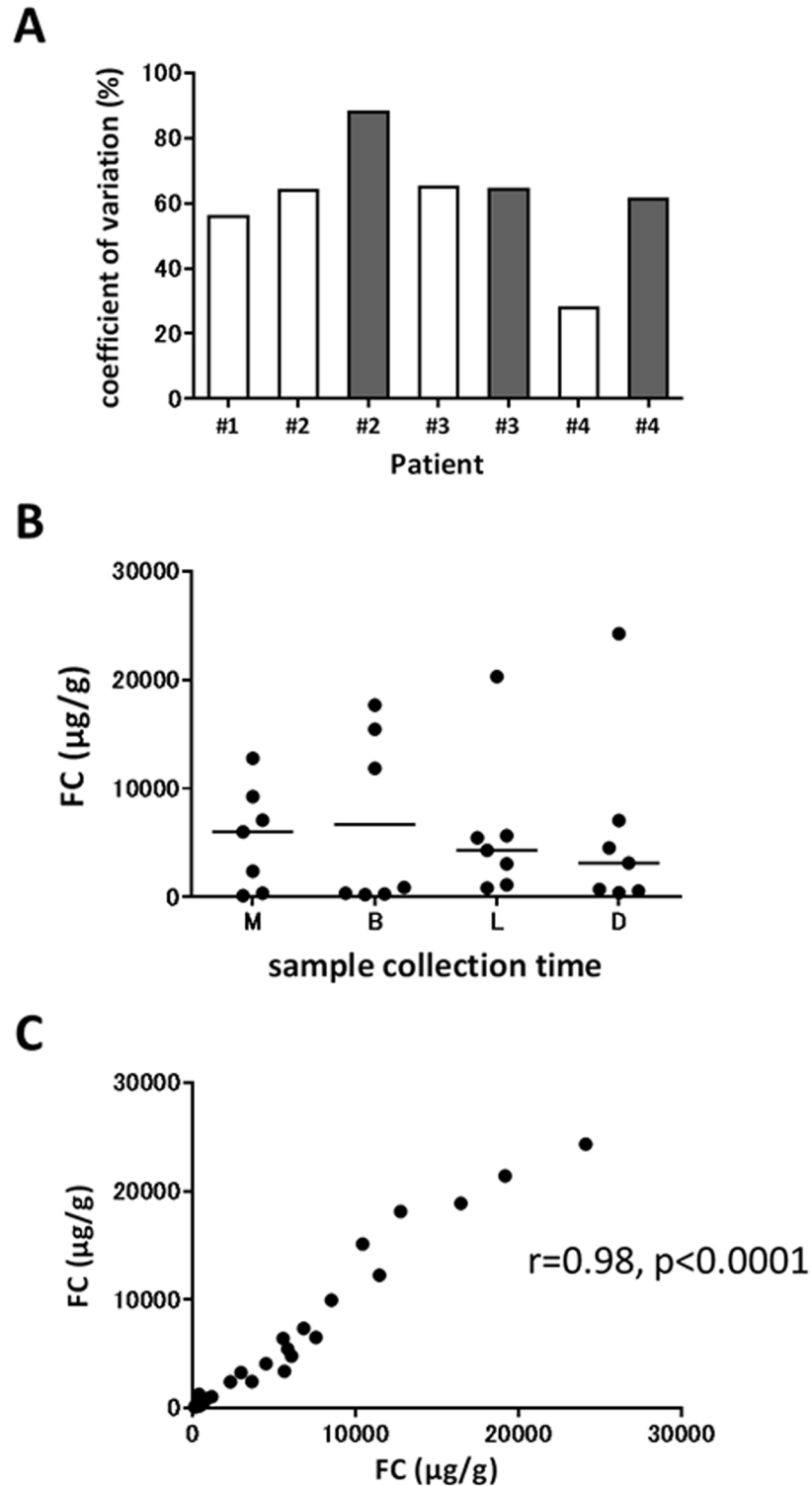


Fig 4. (A) Within-day variability of fecal calprotectin (FC) in 4 patients with active UC. Three of 4 patients provided fecal samples before (open box) and a week after remission induction treatment (filled box). (B) FC at different times in a single day. (C) Correlation between 2 samples collected from different parts of each feces. Statistical significance in FC among sample collection times was determined by Friedman's test with post-hoc analysis of Dunn's multiple comparison test. Pearson's correlation coefficient was used to analyze correlation in FC between 2 separate samples from each feces. M, morning; B, breakfast; L, lunch; D, dinner.

<https://doi.org/10.1371/journal.pone.0185131.g004>

they reported that all patients showed decreased FC with clinical response in the first 4 days after treatment, their data notably showed a wide variation of FC especially within 2 weeks after treatment. Similarly, Turner D. et al. measured FC in 101 pediatric patients with UC at 3 days after intravenous steroid treatment and reported that FC was not responsive to the changes in clinical activity score [19]. De Vos M et al. monitored FC every week after remission induction treatment with IFX in 53 patients with UC, and showed significant decrease in FC at week 2 but not week 1 in patients who achieved endoscopic remission at 10 weeks after treatment [20]. Consistent with these previous data, our study revealed that FC is not sensitive enough to detect response to treatment during the first week after remission induction therapy.

Then what should we rely on during this phase? Our data showed that conventional clinical activity scores, such as CAI and PMS, were more useful than FC to detect treatment response during this period. The United States Food and Drug Administration is now focusing more on PRO than these clinical activity scores as a measure of disease activity like other fields of disease [21]. Although no validated PRO exists for UC to date, Jairath V et al. extracted two-items of PRO from Mayo score, and demonstrated the usefulness of this PRO2 for evaluating treatment efficacy in patients with UC using previous clinical trial data [12]. In our study, PRO2 was superior to FC in the early detection of treatment response as with other clinical activity scores. PGA score also decreased earlier than FC in clinical responders, however, it should be noted that PGA is not specific for the disease process and might be highly susceptible to bias [12]. Because PMS was still sensitive enough for the early detection of treatment response even when PGA item was removed, PRO2 might be a more reliable measure of response than PMS in this clinical setting.

Next, we showed the usefulness of PRO2 but not FC in the early phase of induction treatment for predicting subsequent MH. Notably, we found the association of MH with early-phase CAI but not PMS and PGA score. It is possible that the higher percentage of PGA score in PMS (3 of 9 points) than CAI (5 of 21 points) impaired the power of PMS to predict future MH, which further emphasizes the necessity of eliminating PGA item from PMS. In contrast to our result, De Vos M et al. showed significant decrease in FC at 2 weeks after starting IFX in patients with UC who achieved week 10-MH compared to those who did not achieved MH [20]. These variable results might be due to the different treatment backgrounds, however, extremely wide variability of FC during the early phase of treatment in both studies imply that FC in this early period might not be suitable for predicting future MH on a case-by-case basis.

We then demonstrated wide within-day variability of FC in patients with active UC. Lasson A et al. similarly reported wide daily variability of FC with a median CV of 52% in patients with active UC. They also showed a correlation between FC and the time between bowel movement, and recommended to collect stool samples from the first bowel movement in the morning [9]. In contrast, we found no correlation between FC and sample collection times in a day. In support of our result, Calafat et al. also reported that stool sample collection from the first bowel movement in the morning did not ensure the highest or lowest within-day FC value in patients with active UC [10]. Because this wide daily variability of FC might contribute to its wide variation during early phase of induction treatment in patients with UC, FC in this period is not reliable as a marker of disease activity regardless of the sample collection time.

Limitations of this study are its small sample size and diverse induction therapies. Therefore, our results should be confirmed in a larger number of patients with a uniform treatment in the future.

In summary, our study proposed the limitation of FC as a marker of response to remission induction treatment during the early phase of treatment possibly because of its wide daily variability in patients with active UC. PRO2 was more reliable than FC in the early detection of

treatment response and the prediction of future MH. These results highlight the importance of clinical symptoms rather than FC during the early phase of remission induction treatment. Our results will be helpful for the suitable utilization of FC not only in real clinical practice but also in the future clinical trials.

Acknowledgments

We would like to extend our sincere gratitude and appreciation to Yuki Watanabe, Toyomi Ishibashi (Center for Advanced IBD Research and Treatment, Kitasato University Kitasato Institute Hospital), Osamu Takeuchi, and Satoshi Kuronuma (Department of Research, Kitasato University Kitasato Institute Hospital) for helping us to collect data, and to Maria Carla Villanueva Tablante (University of Santo Tomas) for preparing the manuscript.

Author Contributions

Conceptualization: Taku Kobayashi.

Data curation: Takahiko Toyonaga.

Formal analysis: Takahiko Toyonaga.

Investigation: Takahiko Toyonaga, Taku Kobayashi, Masaru Nakano, Eiko Saito, Satoko Umeda, Shinji Okabayashi, Ryo Ozaki, Toshifumi Hibi.

Supervision: Taku Kobayashi, Toshifumi Hibi.

Writing – original draft: Takahiko Toyonaga.

Writing – review & editing: Taku Kobayashi, Toshifumi Hibi.

References

1. Ordás I, Eckmann L, Talamini M, Baumgart DC, Sandborn WJ. Ulcerative colitis. *Lancet*. 2012; 380:1606–1619. [https://doi.org/10.1016/S0140-6736\(12\)60150-0](https://doi.org/10.1016/S0140-6736(12)60150-0) PMID: 22914296
2. Nakase H, Keum B, Ye BD, Park SJ, Koo HS, Eun CS. Treatment of inflammatory bowel disease in Asia: the results of a multinational web-based survey in the 2(nd) Asian Organization of Crohn's and Colitis (AOCC) meeting in Seoul. *Intest Res*. 2016; 14:231–239. <https://doi.org/10.5217/ir.2016.14.3.231> PMID: 27433145
3. Kaiser T, Langhorst J, Wittkowski H, Becker K, Friedrich AW, Rueffer A, et al. Faecal S100A12 as a non-invasive marker distinguishing inflammatory bowel disease from irritable bowel syndrome. *Gut*. 2007; 56:1706–1713. <https://doi.org/10.1136/gut.2006.113431> PMID: 17675327
4. Ho GT, Lee HM, Brydon G, Ting T, Hare N, Drummond H, et al. Fecal calprotectin predicts the clinical course of acute severe ulcerative colitis. *Am J Gastroenterol*. 2009; 104:673–678. <https://doi.org/10.1038/ajg.2008.119> PMID: 19262524
5. Molander P, Färkkilä M, Ristimäki A, Salminen K, Kempainen H, Blomster T, et al. Does fecal calprotectin predict short-term relapse after stopping TNF α -blocking agents in inflammatory bowel disease patients in deep remission? *J Crohns Colitis*. 2015; 9:33–40. <https://doi.org/10.1016/j.crohns.2014.06.012> PMID: 25052347
6. Musci JO, Cornish JS, Däbritz J. Utility of surrogate markers for the prediction of relapses in inflammatory bowel diseases. *J Gastroenterol*. 2016; 51:531–547. <https://doi.org/10.1007/s00535-016-1191-3> PMID: 26975751
7. Feagan BG, Rutgeerts P, Sands BE, Hanauer S, Colombel JF, Sandborn WJ, et al. Vedolizumab as induction and maintenance therapy for ulcerative colitis. *N Engl J Med*. 2013; 369:699–710. <https://doi.org/10.1056/NEJMoa1215734> PMID: 23964932
8. Sandborn WJ, Ghosh S, Panes J, Vranic I, Su C, Rousell S, et al. Tofacitinib, an oral Janus kinase inhibitor, in active ulcerative colitis. *N Engl J Med*. 2012; 367:616–624. <https://doi.org/10.1056/NEJMoa1112168> PMID: 22894574

9. Lasson A, Stotzer PO, Öhman L, Isaksson S, Sapnara M, Strid H. The intra-individual variability of faecal calprotectin: a prospective study in patients with active ulcerative colitis. *J Crohns Colitis*. 2015; 9:26–32. <https://doi.org/10.1016/j.crohns.2014.06.002> PMID: 25008478
10. Calafat M, Cabré E, Mañosa M, Lobatón T, Marín L, Domènech E. High within-day variability of fecal calprotectin levels in patients with active ulcerative colitis: what is the best timing for stool sampling? *Inflamm Bowel Dis*. 2015; 21:1072–1076. <https://doi.org/10.1097/MIB.0000000000000349> PMID: 25793326
11. Du L, Foshaug R, Huang VW, Kroeker KI, Dieleman LA, Halloran BP, et al. Within-Stool and Within-Day Sample Variability of Fecal Calprotectin in Patients With Inflammatory Bowel Disease: A Prospective Observational Study. *J Clin Gastroenterol*. 2016: published online Dec 22. <https://doi.org/10.1097/MCG.0000000000000776> PMID: 28009684
12. Jairath V, Khanna R, Zou GY, Stitt L, Mosli M, Vandervoort MK, et al. Development of interim patient-reported outcome measures for the assessment of ulcerative colitis disease activity in clinical trials. *Aliment Pharmacol Ther*. 2015; 42:1200–1210. <https://doi.org/10.1111/apt.13408> PMID: 26388424
13. Kato K, Ohkusa T, Terao S, Chiba T, Murakami K, Yanaka A, et al. Adjunct antibiotic combination therapy for steroid-refractory or -dependent ulcerative colitis: an open-label multicentre study. *Aliment Pharmacol Ther*. 2014; 39:949–956. <https://doi.org/10.1111/apt.12688> PMID: 24628398
14. D'Haens G, Sandborn WJ, Feagan BG, Geboes K, Hanauer SB, Irvine EJ, et al. A review of activity indices and efficacy end points for clinical trials of medical therapy in adults with ulcerative colitis. *Gastroenterology*. 2007; 132:763–786. <https://doi.org/10.1053/j.gastro.2006.12.038> PMID: 17258735
15. Takashima S, Kato J, Hiraoka S, Nakarai A, Takei D, Inokuchi T, et al. Evaluation of Mucosal Healing in Ulcerative Colitis by Fecal Calprotectin Vs. Fecal Immunochemical Test. *Am J Gastroenterol*. 2015; 110:873–880. <https://doi.org/10.1038/ajg.2015.66> PMID: 25823769
16. Sandborn WJ, Panés J, Zhang H, Yu D, Niezychowski W, Su C. Correlation Between Concentrations of Fecal Calprotectin and Outcomes of Patients With Ulcerative Colitis in a Phase 2 Trial. *Gastroenterology*. 2016; 150:96–102. <https://doi.org/10.1053/j.gastro.2015.09.001> PMID: 26376350
17. Dignass A, Lindsay JO, Sturm A, Windsor A, Colombel JF, Allez M, et al. Second European evidence-based consensus on the diagnosis and management of ulcerative colitis part 2: current management. *J Crohns Colitis*. 2012; 6:991–1030. <https://doi.org/10.1016/j.crohns.2012.09.002> PMID: 23040451
18. Theede K, Kiszka-Kanowitz M, Nielsen AM, Nordgaard-Lassen I. The correlation between fecal calprotectin, simple clinical colitis activity index and biochemical markers in ulcerative colitis during high-dose steroid treatment. *Scand J Gastroenterol*. 2014; 49:418–423. <https://doi.org/10.3109/00365521.2014.883427> PMID: 24495103
19. Turner D, Leach ST, Mack D, Uusoue K, McLernon R, Hyams J, et al. Faecal calprotectin, lactoferrin, M2-pyruvate kinase and S100A12 in severe ulcerative colitis: a prospective multicentre comparison of predicting outcomes and monitoring response. *Gut*. 2010; 59:1207–1212. <https://doi.org/10.1136/gut.2010.211755> PMID: 20801771
20. De Vos M, Dewit O, D'Haens G, Baert F, Fontaine F, Vermeire S, et al. Fast and sharp decrease in calprotectin predicts remission by infliximab in anti-TNF naïve patients with ulcerative colitis. *J Crohns Colitis*. 2012; 6:557–562. <https://doi.org/10.1016/j.crohns.2011.11.002> PMID: 22398050
21. Williet N, Sandborn WJ, Peyrin-Biroulet L. Patient-reported outcomes as primary end points in clinical trials of inflammatory bowel disease. *Clin Gastroenterol Hepatol*. 2014; 12:1246–1256. <https://doi.org/10.1016/j.cgh.2014.02.016> PMID: 24534550