



Second instar honey bee larvae reared *in vitro*



Forth instar honey bee larvae, feeding on maize pollen within the semi-artificial diet



Larva finished feeding; Prepupal stage. Endpoint: weight and survival



A honey bee pupae *in vitro*



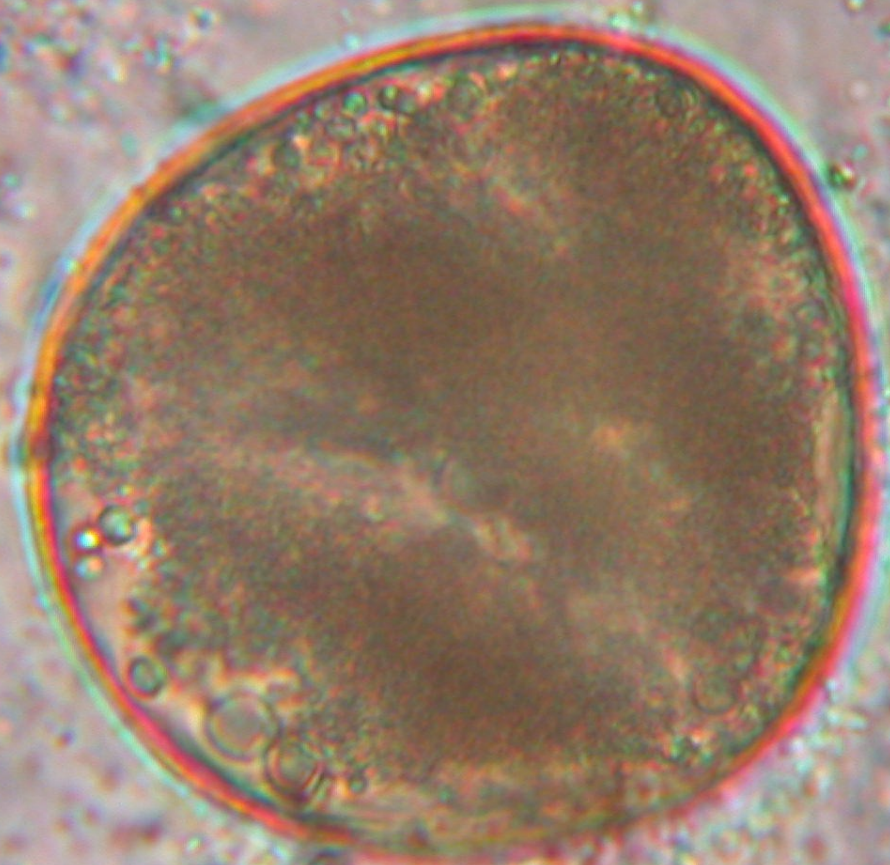
Honey bee pupae *in vitro*, almost at full development



30 μm

Heliconia rostrata pollen (toxic control); as added within the diet of larvae

70 μm



Maize pollen, as added within the diet of larvae



Freshly collected maize pollen