

DNA Methylation Profiles of Airway Epithelial Cells and PBMCs from Healthy, Atopic and Asthmatic Children

Dorota Stefanowicz¹, Tillie-Louise Hackett^{1,2}, Farshid S. Garmaroudi¹, Oliver P. Günther³, Sarah Neumann⁴, Erika N. Sutanto^{5,7}, Kak-Ming Ling⁷, Michael S. Kobor⁴, Anthony Kicic^{5,6,7}, Stephen M. Stick^{5,6,7}, Peter D. Paré^{1,8}, Darryl A. Knight^{1,2*}

1 James Hogg Research Centre at the Heart and Lung Institute, Department of Medicine, University of British Columbia and St. Paul's Hospital, Vancouver, British Columbia, Canada, **2** Department of Anesthesiology, Pharmacology and Therapeutics, University of British Columbia, Vancouver, British Columbia, Canada, **3** Prevention of Organ Failure Centre of Excellence, Vancouver, British Columbia, Canada, **4** Department of Medical Genetics Centre for Molecular Medicine and Therapeutics, Child and Family Research Institute, University of British Columbia, Vancouver, British Columbia, Canada, **5** Department of Respiratory Medicine, Princess Margaret Hospital for Children, Perth, Western Australia, Australia, **6** School of Paediatrics and Child Health, University of Western Australia, Nedlands, Western Australia, Australia, **7** Telethon Institute for Child Health Research and Centre for Child Health Research, University of Western Australia, Nedlands, Western Australia, Australia, **8** Respiratory Division, Department of Medicine, University of British Columbia, Vancouver, British Columbia, Canada

Abstract

Background: Allergic inflammation is commonly observed in a number of conditions that are associated with atopy including asthma, eczema and rhinitis. However, the genetic, environmental or epigenetic factors involved in these conditions are likely to be different. Epigenetic modifications, such as DNA methylation, can be influenced by the environment and result in changes to gene expression.

Objectives: To characterize the DNA methylation pattern of airway epithelial cells (AECs) compared to peripheral blood mononuclear cells (PBMCs) and to discern differences in methylation within each cell type amongst healthy, atopic and asthmatic subjects.

Methods: PBMCs and AECs from bronchial brushings were obtained from children undergoing elective surgery for non-respiratory conditions. The children were categorized as atopic, atopic asthmatic, non-atopic asthmatic or healthy controls. Extracted DNA was bisulfite treated and 1505 CpG loci across 807 genes were analyzed using the Illumina GoldenGate Methylation Cancer Panel I. Gene expression for a subset of genes was performed using RT-PCR.

Results: We demonstrate a signature set of CpG sites that are differentially methylated in AECs as compared to PBMCs regardless of disease phenotype. Of these, 13 CpG sites were specific to healthy controls, 8 sites were only found in atopics, and 6 CpGs were unique to asthmatics. We found no differences in the methylation status of PBMCs between disease phenotypes. In AECs derived from asthmatics compared to atopics, 8 differentially methylated sites were identified including CpGs in *STAT5A* and *CRIP1*. We demonstrate *STAT5A* gene expression is decreased whereas *CRIP1* gene expression is elevated in the AECs from asthmatic compared to both healthy and atopic subjects.

Discussion: We characterized a cell specific DNA methylation signature for AECs compared to PBMCs regardless of asthmatic or atopic status. Our data highlight the importance of understanding DNA methylation in the epithelium when studying the epithelial contribution to asthma.

Citation: Stefanowicz D, Hackett T-L, Garmaroudi FS, Günther OP, Neumann S, et al. (2012) DNA Methylation Profiles of Airway Epithelial Cells and PBMCs from Healthy, Atopic and Asthmatic Children. PLoS ONE 7(9): e44213. doi:10.1371/journal.pone.0044213

Editor: Brock C. Christensen, Geisel School of Medicine at Dartmouth, United States of America

Received: May 11, 2012; **Accepted:** July 30, 2012; **Published:** September 6, 2012

Copyright: © 2012 Stefanowicz et al. This is an open-access article distributed under the terms of the Creative Commons Attribution License, which permits unrestricted use, distribution, and reproduction in any medium, provided the original author and source are credited.

Funding: DS is the recipient of a NSERC (Natural Sciences and Engineering Research Council of Canada) Graduate Student Scholarship. TLH is the recipient of a Canadian Institute for Health Research/Canadian Lung Association/GSK (GlaxoSmithKline), CIHR/IMPACT (Canadian Institutes of Health Research) strategic training and Michael Smith Foundation post doctoral fellowships. FSG is the recipient of the Tehran University of Medical Science (Iran) Doctoral Award. DAK is the Canada Research Chair in Airway Disease and a Michael Smith Foundation for Health Research Career Investigator. SS is a NHMRC Practitioner Fellow (New Hanover Medical Research). This work is funded by CIHR (Centre for Integrated Healthcare Research), NHMRC (303145, 458513), and the Asthma Foundation of Western Australia. The funders had no role in study design, data collection and analysis, decision to publish, or preparation of the manuscript.

Competing Interests: DAK received an unrestricted educational grant from the corporate office and Science and Technology at Johnson & Johnson and TLH is the recipient of a Canadian Institute for Health Research/Canadian Lung Association/GSK (GlaxoSmithKline), CIHR/IMPACT (Canadian Institutes of Health Research) strategic training and Michael Smith Foundation post doctoral fellowships. The fellowship is fully paid from CIHR through partnership funding with the Canadian Lung Association, Canadian Thoracic Society and GlaxoSmithKline (GSK). This does not alter the authors' adherence to all the PLoS ONE policies on sharing data and materials.

* E-mail: Darryl.Knight@hli.ubc.ca

Introduction

Asthma and atopy are two of the most common chronic inflammatory conditions in the western world [1]. While atopy affects up to half of the adult population, only 20% of these patients develop asthma [1]. Although the allergic inflammatory mechanisms in both diseases are similar, it is clear that genetic, environmental and epigenetic factors are important in the pathogenesis of atopy and asthma. Many studies have investigated the role of both environmental and genetic factors in the development of atopy and asthma however there is little understanding of the epigenetic impact.

Epigenetic control of gene expression has two general mechanisms: either the DNA itself is chemically altered by the addition of a methyl group to a cytosine base in a cytosine-guanine (CpG) dinucleotide by a DNA methyltransferase (DNMT), or the histone proteins that package DNA into chromatin are chemically modified. DNA methylation generally results in gene silencing or repression by either changing the conformation of chromatin (facilitated by methyl CpG binding domain proteins (MBDs) and histone deacetylases), or by simply blocking transcriptional machinery from accessing the DNA. Thus, although the genetic make-up of an individual is identical throughout different tissues of the body, DNA methylation is important for the regulation of unique gene expression profiles in each tissue or cell type [2].

Epigenetic modifications to DNA have been described as the potential link between environmental effects and clinical phenotypes [3]. For example, in genetically identical individuals phenotypic discordance does not exist in early life, however environmental exposures throughout the individuals life result in epigenetic disparity, which influence factors such as disease susceptibility [2]. Hollingsworth *et al.*, have demonstrated that epigenetic modifications can also be inherited by using a murine model in which a maternal diet, rich in methyl donors, was shown to increase the severity of allergic airway disease in offspring [4]. Furthermore, this effect was demonstrated to be inherited transgenerationally as offspring of male pups (which were exposed to a high methyl diet *in utero*) also had increased severity of allergic airway disease [4].

The tracheo-bronchial epithelium is the interface between the environment and the submucosa and represents the first line of defense against inhaled exogenous agents. There is now substantial evidence that the airway epithelium of subjects who have asthma is abnormal, including increased expression of epithelial growth factor receptor (EGFR) at denuded and damaged sites [5,6,7,8,9], altered expression of adhesion proteins E-cadherin and zonula occluden-1 [10] and elevated numbers of basal cells marked by cytokeratin-5 [11,12]. Cultured asthmatic epithelial cells have also been shown to be more vulnerable to oxidant-induced stress and display aberrant expression of heat-shock proteins and proinflammatory transcription factors [13,14,15,16,17]. Thus, it is important to identify if airway epithelial-specific DNA methylation patterns are altered with diseased epithelium in order to fully understand the disease process. To allow us to understand the methylation signature of the airway epithelium, we compared DNA methylation of airway epithelial cells (AECs) with peripheral blood mononuclear cells (PBMCs), as they are a minimally invasive and readily available source of biological material.

The objectives of this study were first to identify the DNA methylation signature of AECs compared to PBMCs. The second objective was to identify epigenetic differences within AECs and PBMCs from non-atopic asthmatic, atopic asthmatic, atopic and healthy children.

Methods

Subjects and Ethics Statement

This study is part of ongoing research investigating the phenotype of AECs from mild asthmatic and atopic children [14]. Initially, 25 children undergoing elective surgery for non-respiratory conditions were recruited as part of the DNA methylation study. For validation, the next 44 children were recruited in sequence as part of the gene expression study. Children were characterized as healthy non-atopic non-asthmatic, atopic non-asthmatic, non-atopic asthmatic and atopic asthmatic. Asthma was defined as physician-diagnosed asthma plus documented wheeze by a physician in the past 12 months. Positive responses to relevant questions on the ISAAC [18] and ATS [19] respiratory questionnaires as reported by the parents or subject were used to corroborate the diagnoses and negative responses were used to validate absence of respiratory symptoms. Atopic status was determined by positive RAST or skin prick tests to common allergens (e.g. grass pollens, mold, animal dander, peanut, house dust mite). The recruited children had no record of any infections in the 3 months prior to surgery and were not taking glucocorticoids. All parents/legal guardians gave written informed consent for this study, which was approved by the Princess Margaret Hospital for Children Ethics Committee. Subject demographics are presented in Table 1 for the DNA methylation group and Table 2 for the gene expression group. The use of human AECs and PBMCs was approved by the Providence Health Care Research Ethics Committee of the University of British Columbia.

AEC and PBMC Isolation

AECs were obtained by either trans-laryngeal, non bronchoscope brushing [14,20] or via a portable 'bronchoscope directed' sampling methodology [21]. Briefly, children were anaesthetized and an unsheathed nylon cytology brush was used to gently rub against the epithelial surface. Once removed, the brush tip was cut off and placed into 5mL of collection media and vortexed to release cells. AECs were grown in Bronchial Epithelial Growth Medium (BEGM, LONZA, Walkersville, MD) containing 100U/mL penicillin and 100 ug/mL streptomycin, at 37°C in a humidified 95% air/5% CO₂ atmosphere culture and collected at passage 2 and 3. PBMCs were isolated from 10 mL of whole blood using ficoll gradient centrifugation as previously described [22,23]. DNA from AECs and PBMCs was extracted from 1×10⁶ cells using the Flexi Gene DNA Kit and QIAamp columns according to the manufacturer's instructions (Qiagen, ON). Total RNA was extracted from AECs using the RNeasy mini kit (Qiagen).

Table 1. Patient demographics in DNA methylation cohort prior to surgery.

| Phenotype | Number | Sex (M/F) | Average Age (range) |
|----------------------|--------|-----------|---------------------|
| Healthy | 7 | 4/3 | 7.28 (4.6–10.1) |
| Atopic | 9 | 8/1 | 6.78 (4.5–10.9) |
| Atopic Asthmatic | 4 | 4/0 | 8.4 (3.3–14.6) |
| Non-Atopic Asthmatic | 5 | 4/1 | 5.96 (2.4–10.5) |

Subjects are identified as healthy, atopic, atopic asthmatic, or non-atopic asthmatic.

doi:10.1371/journal.pone.0044213.t001

Table 2. Patient demographics in gene expression cohort prior to surgery.

| Phenotype | Number | Sex (M/F) | Average Age (range) |
|------------------|--------|-----------|---------------------|
| Healthy | 15 | 6/9 | 5.07 (1.2–12.9) |
| Atopic | 14 | 7/7 | 7.86 (2.2–16.5) |
| Atopic Asthmatic | 15 | 8/7 | 7.74 (1.3–14.1) |

Subjects are identified as healthy, atopic, or atopic asthmatic.
doi:10.1371/journal.pone.0044213.t002

DNA Bisulfite Conversion and Methylation Assay

Bisulfite treatment of 250 ng of genomic DNA was performed using the EZ DNA Methylation-Gold Kit (Zymo Research, Orange, CA). DNA methylation of 1505 CpG sites across 807 genes were analyzed using the Illumina GoldenGate Methylation Cancer Panel I, according to the manufacturer's protocol (Illumina, San Diego, CA). The GoldenGate Methylation Cancer Panel I has previously been validated with other technologies such as pyrosequencing [24] and methylation-specific PCR [25,26]. We use the target ID which is a locus specific identifier to refer to CpG sites. This ID contains information about the gene, distance to transcription start site, and the reference strand (e.g. STA-T5A_E42_F).

Statistical Analysis of DNA Methylation Data

A Kruskal-Wallis test with a Dunn's Multiple Comparison test between disease phenotype groups for sex ($p=0.22$) and age ($p=0.84$) and found no significant differences thus we did not adjust for these parameters in subsequent analyses. To avoid gender bias, all CpG sites on the X chromosome ($n=84$) were removed from the analysis as well as probes containing single nucleotide polymorphisms ($n=272$). Probes with detection P -values >0.05 in more than 10% of samples ($n=122$) were also removed leaving 1027 CpG sites across 671 genes. Remaining loci with detection P -values >0.05 were imputed using the K-nearest neighbour algorithm (0.5% of data points) [27]. Raw

data was then background corrected and adjusted for color bias using the Bioconductor *methlyumi* package [28] and batch effects using distance weighted discrimination [29]. For each sample, the M-value: $M = \log_2 \left(\frac{Cy5+1}{Cy3+1} \right)$ was calculated, where Cy5 and Cy3 were the methylated and unmethylated sequences, respectively [30]. These data were then standardized by z-score transformation. Briefly, each value was standardized by subtracting the sample mean and then dividing by the sample standard deviation [31]. Differentially methylated sites between two groups (PBMCs versus AECs and phenotypic categories) were determined using a t -test [32]. The false discovery rate (FDR) of differentially expressed sites between two subject categories was then calculated [33] and used to control for multiple comparisons. Restrictions of 5% q -value and a z-score difference of 2 were employed to limit data to the most relevant results. Batch effect correction, z-score transformation, and t-test computations were performed in MATLAB (MathWorks Inc., MA). All preprocessing was performed in R version 2.12.0 (<http://www.R-project.org>) [34]. Raw data and normalized data have been submitted to the Gene Expression Omnibus database accession # GSE37853.

Ingenuity Pathways Analysis (IPA)

The genes containing CpG sites which showed differential DNA methylation between AECs and PBMCs were classified by IPA (Ingenuity® Systems, www.ingenuity.com) using the biological functions application. As the Illumina GoldenGate Cancer Panel I is an array based on cancer related genes, we used our dataset as the reference set for pathways analysis to avoid bias towards cancer associated pathways. A right-tailed Fisher's exact test was used to calculate a P -value which determined if the association between the genes identified and the biological pathway was a result of chance alone.

Quantitative Polymerase Chain Reaction

Gene expression of cysteine-rich protein 1 (CRIP1) and signal transducer and activator of transcription 5A (STAT5A) was determined via two-step reverse transcriptase polymerase chain reactions (RT-PCR). Briefly, cDNA was synthesized using random hexanucleotide primers and Multiscribe Reverse Transcriptase

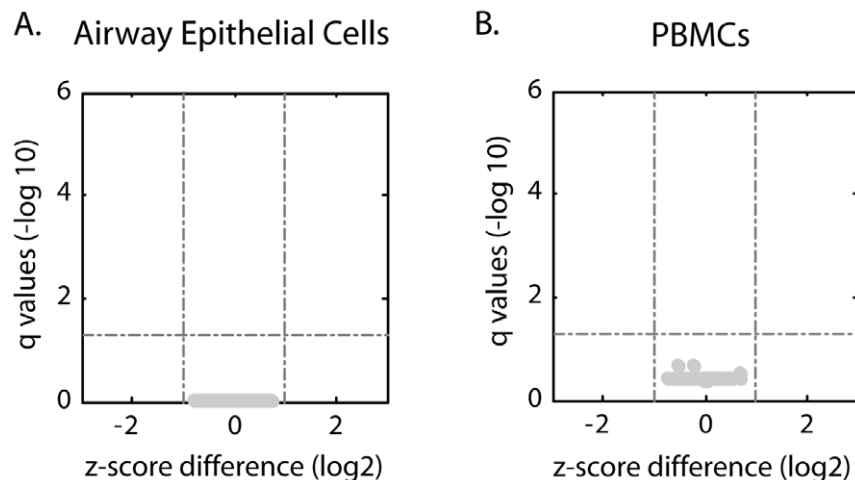


Figure 1. DNA methylation analysis of atopic asthmatics compared to non-atopic asthmatics individuals in AECs and PBMCs. Volcano plots of airway epithelial cells (AECs) (A) and PBMCs (B), analyzed for 1027 CpG loci in 671 genes, from atopic and non-atopic asthmatic subjects. Y-axis represents the q -values ($-\log_{10}$) for all of the CpG sites analyzed and the x-axis is the z-score difference (\log_2). Dashed lines indicate cut-offs for significance. These results show no differences between atopic and non-atopic asthma.
doi:10.1371/journal.pone.0044213.g001

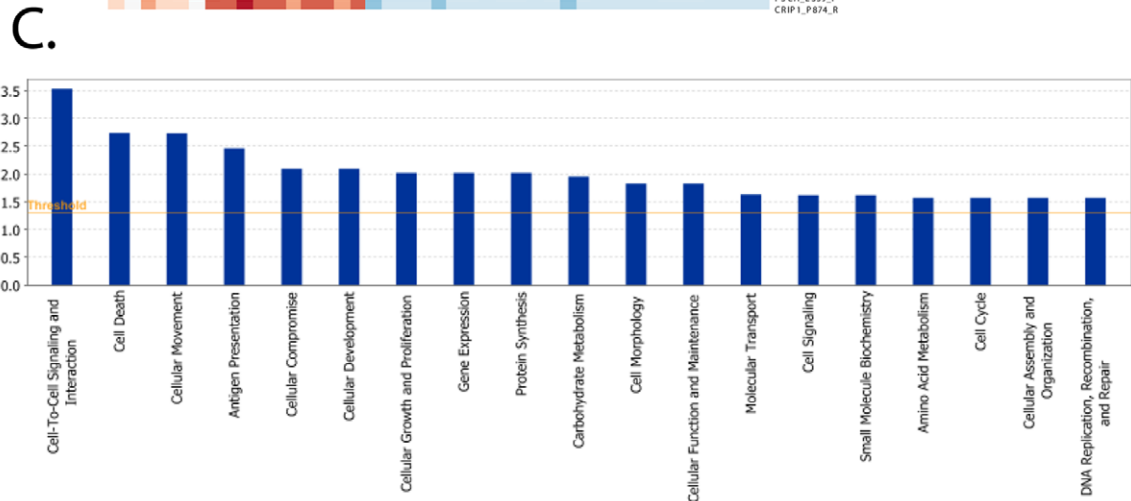
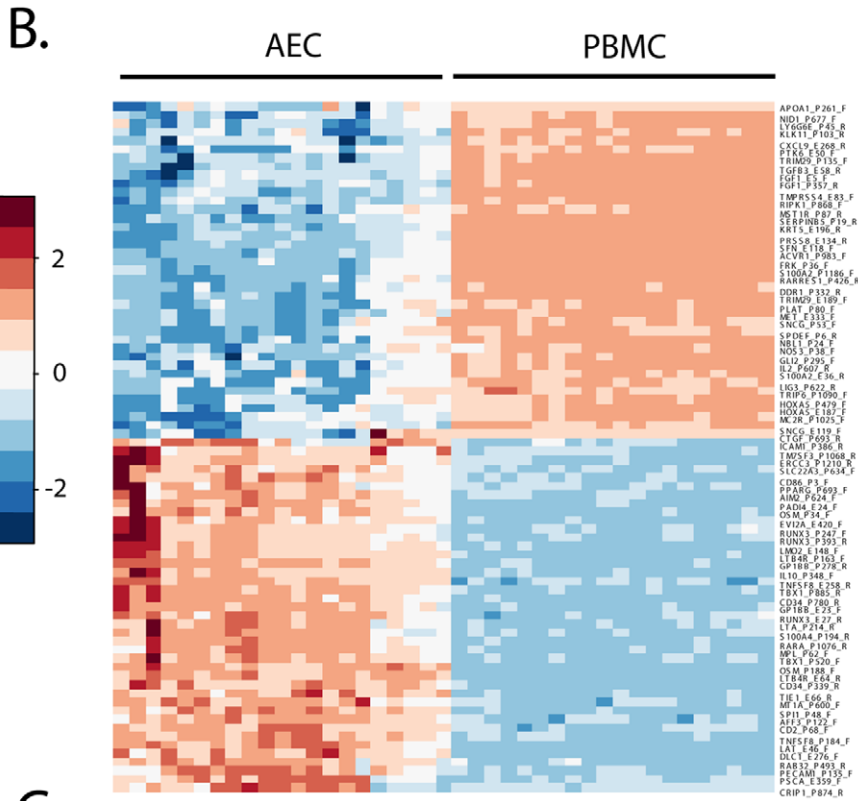
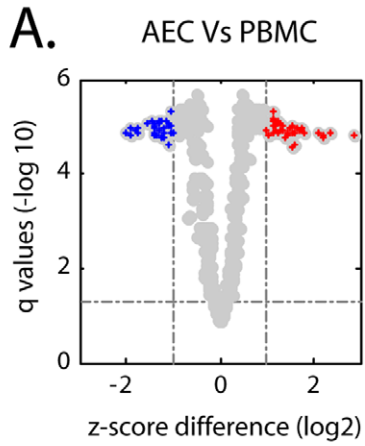


Figure 2. DNA methylation profile of AECs compared to PBMCs. DNA methylation for 1027 CpG sites was assessed in AECs compared to PBMCs from all subjects. A. Volcano plot of CpG sites interrogated with red and blue points indicating significantly over- and under-methylated sites. Q-values are shown on the y-axis ($-\log_{10}$) and z-score difference on the x-axis (\log_2). Dashed lines indicate cut-offs for significance. B. Heatmap illustrating z-scores of 80 differentially methylated loci in AECs compared to PBMCs. Columns represent subjects and rows represent CpG sites while red/blue indicates more/less methylated. C. The molecular and cellular functions of the 67 genes classified by IPA. The x-axis shows functions while the y-axis shows $-\log(p\text{-value})$.
doi:10.1371/journal.pone.0044213.g002

(Applied Biosystems) and used in a PCR reaction containing 2X Sybrgreen Master Mix (Applied Biosystems) under standard cycling conditions. Primers for CRIP1 (*forward*: 5'-CGGAGCCGT-CATGCCCAAGT-3', *reverse*: 3'-CCGATGC-CAGTCCTTGCCCA-5'), STAT5A (*forward*: 5'-CCTGGACTTTTCTGAAGGGGCTCA-3', *reverse*: 3'-ATCCCGGGCTCTGGAAATCCCA-5') and PPIA (*forward*: 5'-TGAGCACTGGAGAGAAAGGA-3', *reverse*: 3'-CCAT-TATGGCGTGTAAGTCA-5') were obtained from GeneWorks (Hindmarsh, Australia). Expression was normalized to PPIA. A Kruskal-Wallis and a *post hoc* Dunn's multiple comparison test was performed using GraphPad Prism Version 4.0 for Windows (GraphPad Software, San Diego California USA, www.graphpad.com). A p-value of less than 0.05 was deemed significant.

Results

Cell-specific Methylation Profiles in AECs Compared to PBMCs

We first determined whether there were any differences in the epigenetic signatures of PBMCs and AECs from non-atopic and atopic asthmatic subjects. As demonstrated in Figure 1, we found no difference in the DNA methylation signatures between atopic asthmatics and non-atopic asthmatics for any of the CpG sites interrogated in either AECs (Figure 1A) or PBMCs (Figure 1B). Thus although our sample size is small, for the population used, atopic asthmatic and non-atopic asthmatic subjects were grouped for subsequent analyses.

To determine if a cell specific DNA methylation profile could be obtained from patient-matched PBMCs and AECs, we initially compared the DNA methylation status of all 1027 CpG loci across 671 genes between PBMCs and AECs from all individuals ($n = 25$). We were able to construct a cell specific signature consisting of 80 CpG sites across 67 genes which had differential DNA methylation in AECs compared to PBMCs (Figure 2A and 2B). Table S1 contains a list of all CpG sites identified, the Z-score difference and q-value. These genes were classified by IPA which identified 19 biological functions including cell-to-cell signaling and interaction, cell death, cellular movement, antigen presentation, and cellular compromise (Figure 2C). Table S2 shows the 67 annotated genes involved in each biological function.

We then evaluated the DNA methylation profiles of PBMCs and AECs for each disease phenotype and found 96, 71, and 89 differentially methylated CpG sites across 83, 58, and 77 genes in the healthy, atopic and asthmatic groups respectively (Figure 3A, B, and C). A full list of differentially methylated CpG sites for each disease phenotype can be found in the supplementary data online (Tables S3, S4, and S5). Many of the CpG sites identified were similar between the three phenotypes as detailed in the Venn diagram demonstrating overlap between each group (Figure 3D). This analysis also identified CpG sites that are differentially methylated between AECs and PBMCs that were unique for each phenotype; 6 for asthmatics, 8 for atopics, and 13 for healthy controls. For all individuals, 57 CpG sites across 47 genes from the original 80 CpG sites were differentially methylated in AECs compared to PBMCs irrespective of disease. The IPA analysis of

these AEC specific genes identified 19 overrepresented biological and molecular functions, the top three being cell-to-cell signaling and interaction, cellular development, and cellular compromise as detailed in Figure 3E and Table S6.

Comparison of DNA Methylation Profiles of AECs or PBMCs between Disease Phenotypes

We next sought to determine if there were differences in the DNA methylation profiles of AECs from asthmatics compared to healthy controls. We found no differentially methylated CpG sites in this comparison (Figure 4A). We also analyzed differences in DNA methylation between atopic and healthy subjects and again found no differentially methylated CpG sites (Figure 4B). As only a portion of atopic individuals develop symptoms of asthma, we next examined whether this dichotomy was associated with differential DNA methylation status of AECs in these two cohorts. Comparison of AECs from asthmatic and atopic children showed eight differentially methylated CpG sites from eight different genes (Figure 4C). The q-values and Z-score differences for these eight differentially methylated CpG sites are presented in Table 3.

When the DNA methylation signatures of PBMCs from asthmatic, atopic and healthy individuals were compared, we found no CpG sites that were differentially methylated between the subject groups (Figure 4D, E and F).

Correlation between DNA Methylation and Gene Expression in AECs

To determine the impact of DNA methylation on gene expression in AECs, we chose to examine two genes. *CRIP1* as it had the most significant q-value and z-score difference for DNA methylation between atopic and asthmatic AECs (Table 3) and *STAT5A* because it had a significant q-value but was also identified a unique methylation CpG site in the analysis between asthmatic AECs versus asthmatic PBMCs (Table S5). We found that *STAT5A* gene expression was significantly reduced in AECs from asthmatic when compared to atopic and healthy subjects (Figure 5A). These data strongly support our findings of higher DNA methylation for the *STAT5A_E42_F* CpG site in asthmatic compared to atopic derived AECs (Figure 5B). Similar to *STAT5A_E42_F*, the *CRIP1_P874_R* CpG site had higher methylation in AECs from asthmatic compared to atopic subjects (Figure 5D). However, in contrast to *STAT5A* gene expression, *CRIP1* gene expression was elevated in AECs from asthmatic when compared to both healthy and atopic subjects (Figure 5C).

Discussion

In the current study, we characterized the methylation status of over 1000 CpG sites in AECs and PBMCs obtained from asthmatic, atopic and healthy children. We demonstrate a signature set of 57 CpG sites that are differentially methylated in AECs as compared to PBMCs regardless of disease phenotype. Our findings confirm that DNA methylation plays a role in tissue or cell specialization. We also identified 8 genes with differentially methylated CpG sites in AECs derived from asthmatic compared to AECs obtained from atopic children. Although gene markers in

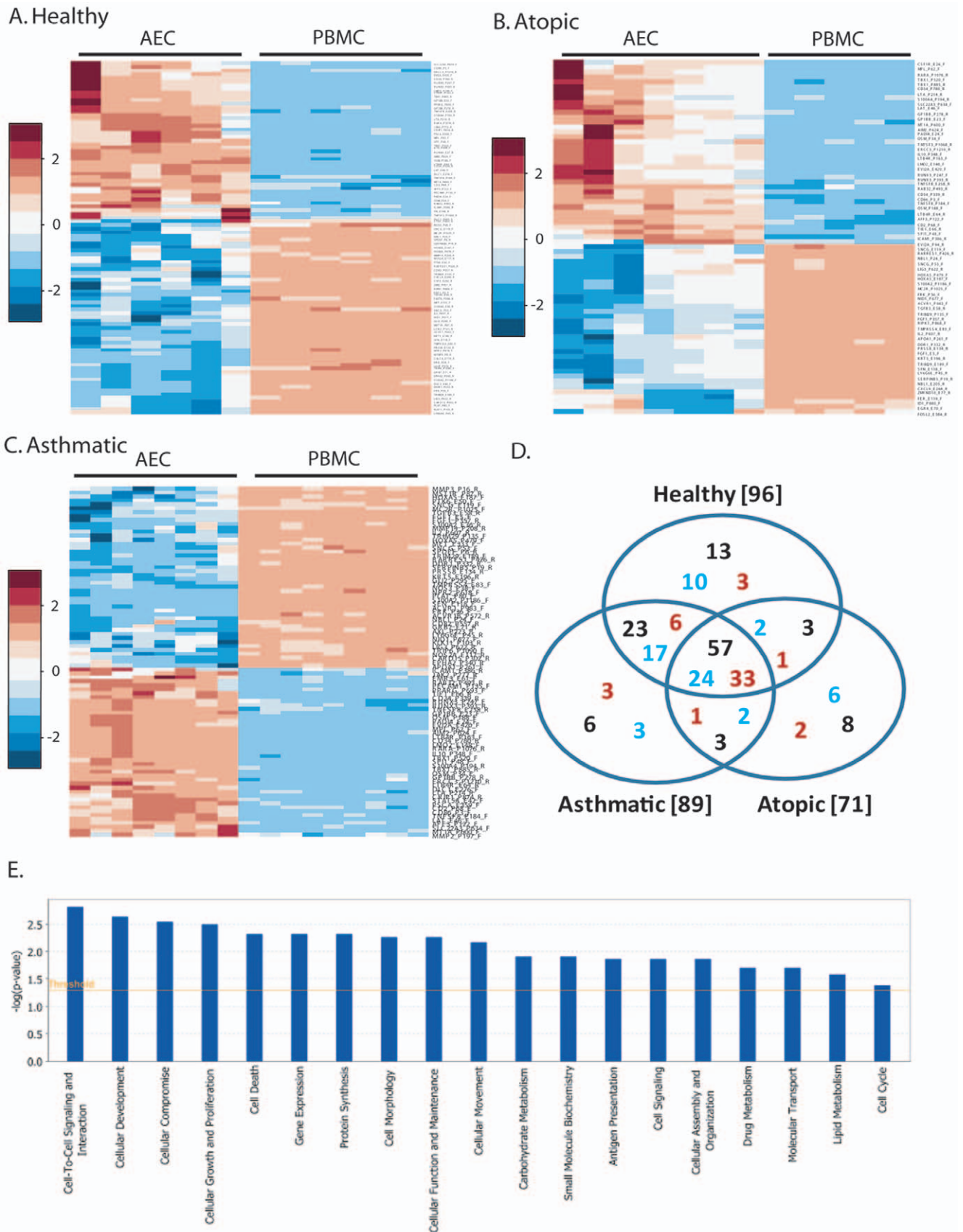


Figure 3. DNA methylation heatmaps of CpG sites in PBMCs and AECs from healthy, atopic and asthmatic pediatric subjects. AECs and PBMCs were analyzed for 1027 CpG loci in 671 genes from healthy (A), atopic (B), and asthmatic (C) subjects. Heatmaps of z-scores for AECs and

PBMCs are shown with individuals (columns) and differential CpG sites (rows). Increased methylation is shown in red and decreased methylation in blue. D. Venn diagram showing overlap of differentially methylated sites between healthy, atopic and asthmatic subjects. Numbers in black indicate total number of CpG sites while numbers in red/blue indicate more/less methylated in AECs (compared to PBMCs). E. The molecular and cellular functions in the 47 genes classified by IPA. The x-axis shows functions while the y-axis shows $-\log(p\text{-value})$. doi:10.1371/journal.pone.0044213.g003

PBMCs have been identified through gene expression analysis for multiple diseases including aspirin-exacerbated respiratory disease and asthma [35,36], we did not identify any differences in DNA methylation when comparing PBMCs from the three subject groups.

Characterization of DNA methylation profiles has been performed on epithelium derived from several tissues, such as ovary, prostate, breast and lung but these studies have been focused on cancer pathogenesis and cancer derived epithelial cell lines [37,38,39,40,41]. We identified 80 CpG sites in 67 genes which were differentially methylated in AECs compared to PBMCs. By analyzing this AEC DNA methylation signature by disease, we identified 57 CpG sites in 47 genes that were differentially methylated in AECs compared to PBMCs irrespective of disease status. These genes were identified by pathways analysis to be important in several cellular functions including cell cycle, cell signaling and cell metabolism. Such cell specific patterns are important in understanding the role of DNA methylation in cellular function and disease. Many of the CpG methylation

differences we identified between AECs and PBMCs were to be expected as many are within the promoter region or exon 1 of genes that are specific for specialized cell functions. For example, we demonstrate that cytokeratin 5 (*KRT5*), a cytoskeletal protein, is less methylated in AECs compared to PBMCs (Table S1 and S6). *KRT5* is a well documented marker of basal epithelial cells, it was therefore to be expected that this epithelial protein is repressed, and thus more methylated, in PBMCs. In contrast, *CD2*, a cell adhesion molecule expressed in certain lymphocytes, is less methylated in PBMCs compared to AECs (Table S1 and S6). These findings support the notion that DNA methylation is an important regulator of cell or tissue functions through the regulation of gene expression as previously described [42,43]. In support of our findings is a report by Yang et al of a cell specific DNA methylation profile for a disintegrin and metalloprotease 33 (*ADAM33*) [44]. DNA methylation analysis of the promoter region revealed hypermethylation of *ADAM33* in epithelium and hypomethylation in fibroblasts which strictly regulated gene expression [44]. In addition, using a murine model, Hollingsworth

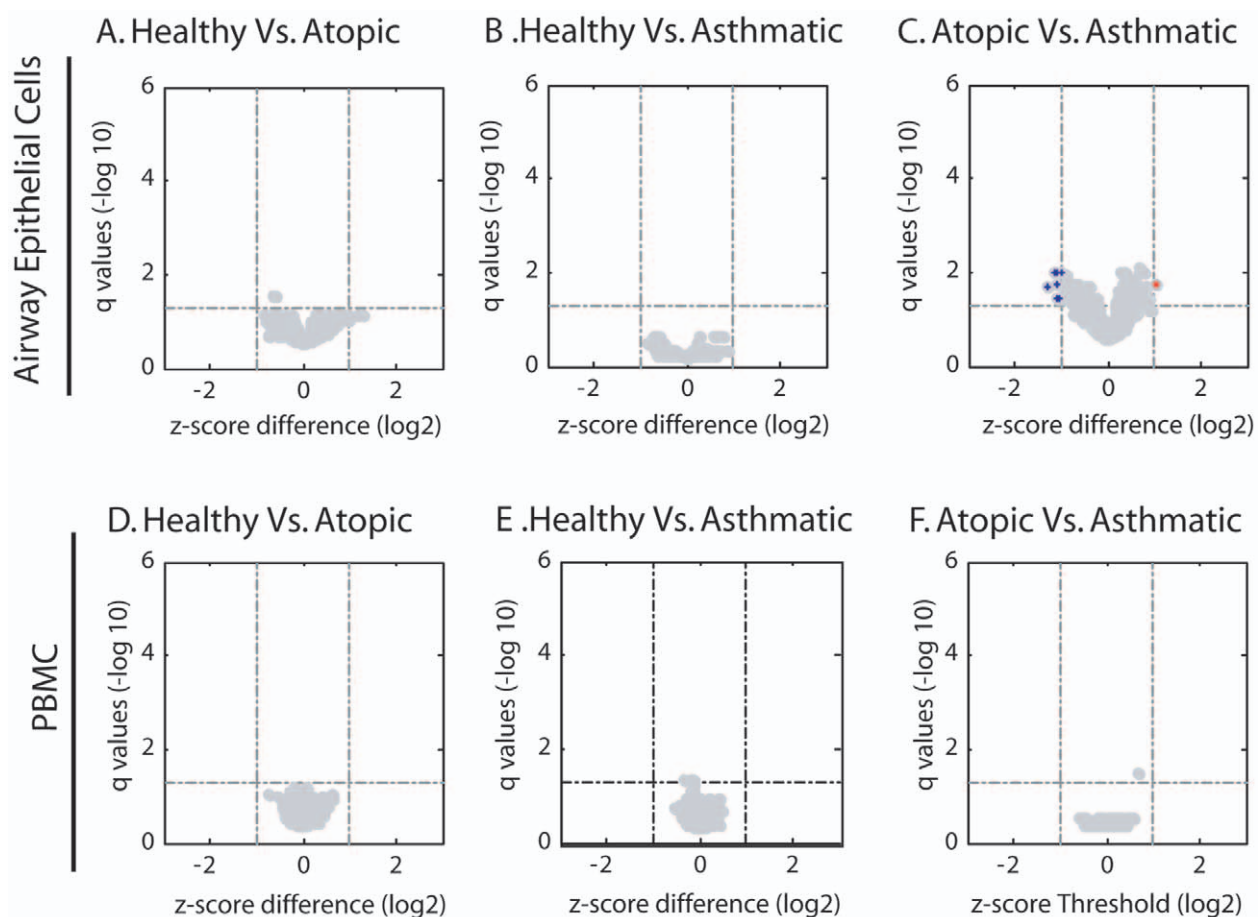


Figure 4. Differential methylation between disease phenotypes in AECs or PBMCs. Volcano plots of CpG sites interrogated with red and blue points indicating significantly over- and under-methylated sites. Q-values are shown on the y-axis ($-\log_{10}$) and z-score difference on the x-axis (\log_2). Dashed lines indicate cut-offs for significance. Within AECs, differences in DNA methylation were assessed in healthy subjects compared to atopics (A) and asthmatics (B) as well as atopic subjects compared to asthmatics (C). The same comparisons were performed in PBMCs (D, E, and F). doi:10.1371/journal.pone.0044213.g004

Table 3. Differentially Methylated CpGs in Atopic Compared to Asthmatic Derived AECs. Z-score difference is presented as atopic relative to asthmatic derived AECs.

| CpG Site | Protein Function | z-score difference (log2) | q-value |
|----------------|--|---------------------------|---------|
| CRIP1_P874_R | LIM domain protein involved in cell adhesion and differentiation | -1.14 | 0.01 |
| FGFR1_P204_F | Growth factor receptor involved in mitogenesis and differentiation | -1.11 | 0.01 |
| STAT5A_E42_F | Transcriptional activator involved in cell differentiation and proliferation | -1.01 | 0.01 |
| S100A2_P1186_F | Calcium binding protein involved in cell cycle progression and differentiation | 1.03 | 0.02 |
| ITGA2_P26_R | Integrin involved in cell adhesion | -1.07 | 0.02 |
| EGR4_E70_F | Transcription factor involved in mitogenesis and differentiation | -1.31 | 0.02 |
| ID1_P880_F | Transcriptional inhibitor involved in cell growth and senescence | -1.03 | 0.04 |
| IGSF4C_E65_F | Cell adhesion protein | -1.09 | 0.04 |

doi:10.1371/journal.pone.0044213.t003

et al identified an association between *in utero* supplementation with methyl donors and both allergic airways disease as well as differential methylation of the runt-related transcription factor 3 (*Runx3*) gene [4]. In our study, we identified elevated methylation of the *Runx3* gene at three separate CpG loci when we compared AECs to PBMCs from healthy subjects (Figure 3A, Table S3) but only two CpG sites in atopic and asthmatic subjects (Figure 3B and 3C, Table S4 and S5). Similarly, we identified differential methylation in the apolipoprotein A-1 (*apoA-1*) gene; we found decreased methylation in AECs as compared to PBMCs from all of our subjects (Figure 2B, Table S1) but, when we then compared AECs to PBMCs by phenotype, we found decreased methylation of *apoA-1* only in the asthmatic and atopic individuals (Figure 3B and 3C, Table S4 and S5). *ApoA-1* has recently been identified as a potential new therapeutic target for airway inflammation in asthma [45]. Using an apoA-1 mimetic peptide, Yao et al. were able to inhibit airway inflammation and hyperreactivity and attenuate manifestations of airway remodeling in a murine asthma model [45]. The alterations in methylation of *Runx3* and *apoA-1* which we identified in atopic and asthmatic subjects may well indicate a role for these genes in airway inflammation, however further validation is required.

We also identified differentially methylated CpG sites which were unique to each phenotype. Of interest, of the 6 unique differentially methylated CpG sites identified in asthmatic derived AECs compared to PBMCs (Figure 3D), one of these was the STAT5A_E42_F CpG site which we also found to be differentially methylated in asthmatic compared to atopic derived AECs, potentially highlighting the importance of this gene. Comparison of DNA methylation between AECs from atopic and asthmatic subjects yielded 8 genes that were differentially methylated of which the most significant was *CRIP1*. Our data suggest that atopy results from an epigenetically different profile from asthma rather than an intermediate phenotype. Support for this notion has come from GWAS studies in which some of the major asthma associated genes are epithelial in origin and do not segregate with allergy [46]. The effect of DNA methylation on STA5A and CRIP1 gene expression by disease status was further investigated. It is worth noting that we only found differential methylation based on atopy in AECs but not PBMCs, which are the source of monocytes associated with atopy and allergic inflammation (eosinophils, basophils, mast cells, and Th2 cells). As reported by Southam *et al.*, in an allergic asthma murine model it has been shown that CD34⁺45⁺IL-5R α ⁺ cells, which are thought to be the earliest eosinophil lineage committed progenitor cell, give rise to

eosinophil colonies only when isolated from the lungs of allergic but not control mice [47]. These data suggest that changes in local eosinophil numbers after allergen challenge may be caused, at least in part, by local lineage commitment and subsequent differentiation of progenitor cells via an IL-5 dependant mechanism. In future studies comparisons of tissue resident monocytes would potentially reveal epigenetic modifications in allergic subjects compared to non-atopic subjects.

STAT5A is a member of the STAT family of transcription factors, and is activated by a variety of cytokines and hormones. When activated by IL2, IL7, or TSLP, STAT5A is a strong promoter of Th2 cell differentiation and response [48,49]. In an asthmatic mouse model, STAT5 phosphorylation was found to be elevated in OVA-induced splenocytes [50]. In mammary epithelial cells, activated STAT5 is required for tissue-specific gene expression via histone acetylation and chromatin remodeling of gene specific loci [51], while in the airway, STAT5 can be activated by Neuregulin-1, resulting in epithelial cell proliferation [52]. *STAT5A* knock-out mice displayed enhanced Th1 responses as well as decreased airway eosinophil recruitment [53]. In this study we demonstrate that, in asthmatic compared to both healthy and atopic derived AECs, *STAT5A* gene expression is decreased which is concordant with our finding of increased *STAT5A* methylation (Figure 5C and 5D). These data promote the notion that DNA methylation is a regulator of *STAT5A* gene expression in AECs. Based on the previous work on *STAT5A*, we would anticipate higher expression of this transcription factor in asthmatic derived AECs, however since we did not perform experiments measuring *STAT5A* activation, which could potentially modulate its effects, it remains to be seen how gene expression due to DNA methylation interacts with the cellular cytokine and hormonal milieu to impact *STAT5A* function. Therefore, altered DNA methylation in the *STAT5A* gene could have implications in allergic airways disease but more studies are necessary to elucidate the precise role of *STAT5A* in epithelial functions.

Due to its double zinc-finger motifs (LIM domains), *CRIP1* is involved in many cellular processes including motility, adhesion, and structure via its interaction with the cytoskeletal protein actin [54]. *CRIP1* can also shuttle to the nucleus where it can facilitate protein interactions important for transcriptional regulation [55,56]. In a transgenic mouse model, *CRIP1* over-expression impacted host defense by skewing towards a Th2 phenotype as well as increasing host susceptibility to toxins from pathogens and viral infection [57]. Within PBMCs, *CRIP1* has previously been

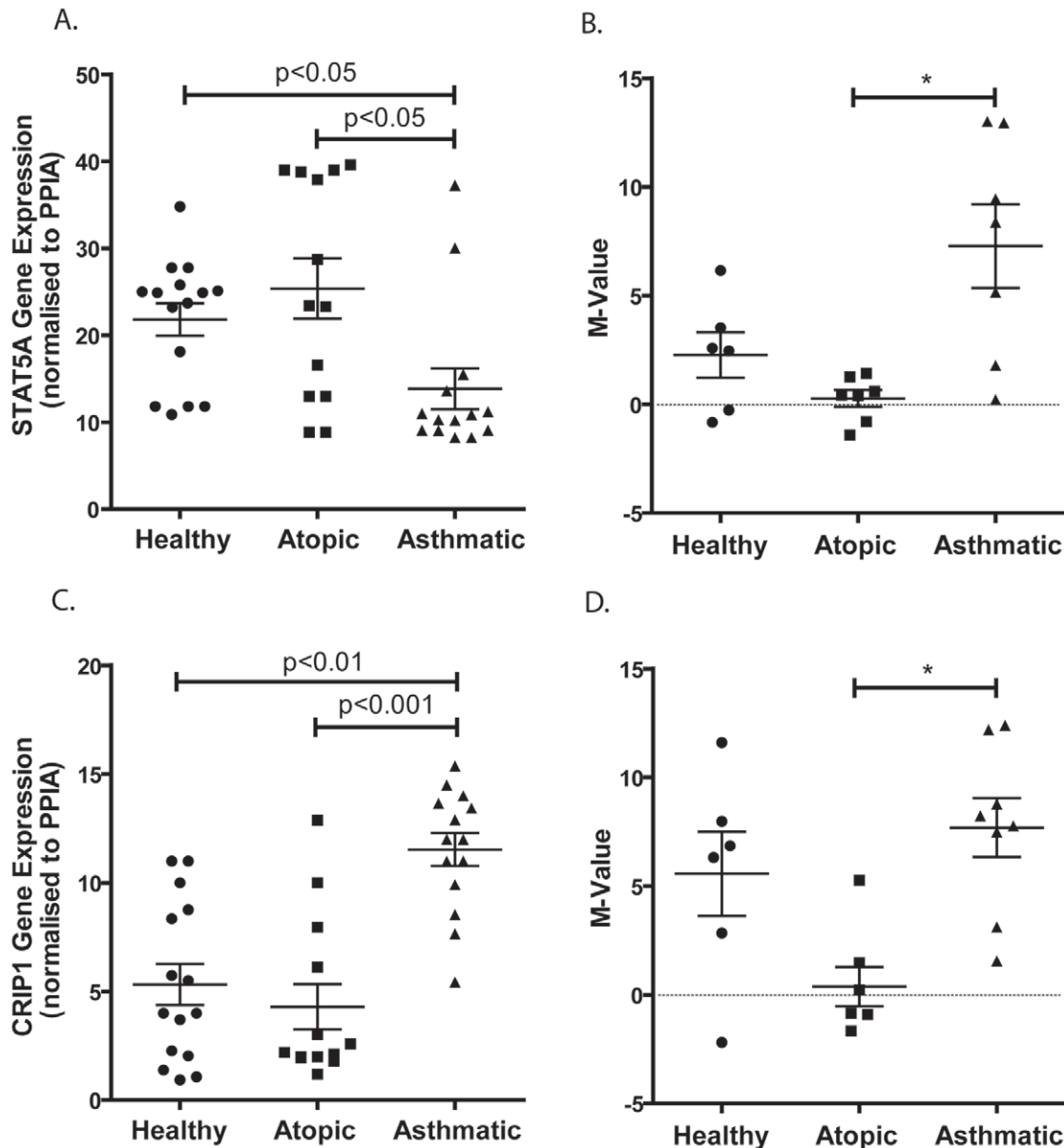


Figure 5. STAT5A and CRIP1 Gene Expression and DNA Methylation Status in AECs. AECs from atopic, healthy and asthmatic individuals were analyzed for STAT5A (A) and CRIP1 (C) mRNA expression using RT-PCR. Results are expressed as gene expression normalized to PPIA (y-axis). DNA methylation status is shown as M-values for STAT5A_E42_F (B) and CRIP1_P874_R (D) for the three phenotypes. * indicates differential methylation as detailed in Table 3.

doi:10.1371/journal.pone.0044213.g005

identified as playing a role in the acute-phase immune response [58] but within epithelial cells its function is not as clear. In fibroblasts, CRIP1 is important in stress response being induced by growth-inhibitory signals and cytotoxic stress resulting in suppression of cell death and proliferation while elevating cellular attachment and metabolic activity [59]. Despite that lack of concordance between DNA methylation and gene expression, our findings of increased CRIP1 gene expression in the epithelium of asthmatics provides us with a new potential candidate gene that could be involved in many important epithelial functions. As the Illumina GoldenGate array focuses on CpG sites within the promoter region and/or exon 1 of genes and not the gene body, methylation is likely to influence gene expression. However, it has been reported that DNA methylation can be overruled by histone

modifications resulting in expression of a gene even if it is methylated and vice versa repress a gene when it is not methylated [60,61,62,63]. In addition, agglomerative epigenetic aberrations including hypermethylation and hypomethylation have been described in several cancer studies [64,65,66,67,68]. These events affect large chromosomal regions where clusters of genes are silenced or activated as a result of a global epigenetic state. In long-range epigenetic silencing (LRES), although the majority of genes spanning these zones are hypermethylated, all of the genes in the region are transcriptionally repressed whether their promoters are methylated or not [66,69]. Thus, it is possible that regulation of CRIP1 gene expression is more complex, potentially involving other factors such as histone modifications and global epigenetic states.

Asthma is classically characterized by chronic airway inflammation, variable airway obstruction, airway remodeling and hyperresponsiveness [70]. Allergic asthma involves the adaptive immune response which is triggered upon allergen exposure resulting in a T-helper type 2 (Th2) biased inflammatory response [71]. In contrast, the mechanisms involved in non-allergic asthma are less well defined and are thought to involve an innate immune response that may be activated by environmental factors such as air pollution or oxidative stress. We thus wanted to identify if differential epigenetic hallmarks could be found between these two asthma phenotypes, yet we found that PBMCs or AECs from non-atopic and atopic asthmatics shared the same epigenetic signature across the 1027 CpG sites examined. Therefore, even though our sample size was small, this suggests that the biological processes involved in these two asthma phenotypes are not influenced by DNA methylation of the genes examined in this study thus we grouped the asthmatic subjects as one phenotype and used this for all subsequent analyses.

This study has several limitations. While a small sample size for each disease phenotype studied is likely to influence our ability to detect differential CpG methylation, we were able to determine a number of differentially methylated CpG sites between asthmatic and atopic AECs. Additionally, we used the Illumina GoldenGate Methylation Cancer Panel I which was designed to screen candidate genes originally identified in cancers and thus focuses on cancer related pathways. Even so, we were able to identify pathways within this cancer-centric structure that were relevant to our study. The inability to determine the entire epigenetic profile of the airway epithelium may result in potentially missing many disease specific epigenetic modifications. With regards to disease, our study also focused on pediatric subjects with asthma and atopy. Therefore we cannot determine the epigenetic component of atopy and asthma with increasing age, which may identify a stronger epigenetic fingerprint. Also, all subjects included in the study displayed mild disease therefore it is difficult to generalize our results to all subtypes and severities of asthma. However our findings do indicate that epigenetic changes are present early in disease pathogenesis and highlight the importance of understanding these mechanisms of gene regulation further. Although the individuals within the study were well characterized for asthma and atopy we did not have enough power in the study cohort to stratify the groups by specific allergens, which may also influence the epigenetic profile of the airway epithelium.

In summary, we have characterized a cell specific DNA methylation signature for AECs and PBMCs that is maintained regardless of the presence of asthma or atopy. Our data also highlights the importance of determining the effects of DNA methylation in the airway epithelium in discriminating atopy and asthma rather than using PBMCs. We conclude that future studies are required to determine the complete epigenetic signature of the airway epithelium in individuals with atopy and asthma to elucidate candidate genes which may be involved in the pathogenesis of disease and amenable to targeted therapies.

References

- Bousquet J, Bousquet PJ, Godard P, Daures JP (2005) The public health implications of asthma. *Bull World Health Organ* 83: 548–554.
- Fraga MF, Ballestar E, Paz MF, Ropero S, Setien F, et al. (2005) Epigenetic differences arise during the lifetime of monozygotic twins. *Proc Natl Acad Sci U S A* 102: 10604–10609.
- Esteller M (2006) The necessity of a human epigenome project. *Carcinogenesis* 27: 1121–1125.
- Hollingsworth JW, Maruoka S, Boon K, Garantziotis S, Li Z, et al. (2008) In utero supplementation with methyl donors enhances allergic airway disease in mice. *J Clin Invest* 118: 3462–3469.
- Dunnill MS (1960) The pathology of asthma, with special reference to changes in the bronchial mucosa. *J Clin Pathol* 13: 27–33.
- Trautmann A, Kruger K, Akdis M, Muller-Wening D, Akkaya A, et al. (2005) Apoptosis and loss of adhesion of bronchial epithelial cells in asthma. *Int Arch Allergy Immunol* 138: 142–150.
- Barbato A, Turato G, Baraldo S, Bazzan E, Calabrese F, et al. (2006) Epithelial damage and angiogenesis in the airways of children with asthma. *Am J Respir Crit Care Med* 174: 975–981.
- Amishima M, Munakata M, Nasuhara Y, Sato A, Takahashi T, et al. (1998) Expression of epidermal growth factor and epidermal growth factor receptor

Supporting Information

Table S1 Differentially Methylated CpG Sites in AECs Compared to PBMCs. We identified 80 CpG sites which are differentially methylated between AECs and PBMCs. Z-score difference is presented as AEC relative to PBMC. (DOCX)

Table S2 Biological Functions in Differentially Methylated Genes in AECs Compared to PBMCs. We identified 67 genes which contain the 80 differentially methylated CpG sites between AECs and PBMCs, these genes are classified into 19 overrepresented biological functions. (DOCX)

Table S3 Differentially Methylated Sites in Healthy AECs Compared to PBMCs. We identified 96 CpG sites which are differentially methylated between healthy AECs and PBMCs. Z-score difference is presented as AECs relative to PBMCs. (DOCX)

Table S4 Differentially Methylated Sites in Atopic AECs Compared to PBMCs. We identified 71 CpG sites which are differentially methylated between atopic AECs and PBMCs. Z-score difference is presented as AECs relative to PBMCs. (DOCX)

Table S5 Differentially Methylated Sites in Asthmatic AECs Compared to PBMCs. We identified 89 CpG sites which are differentially methylated between asthmatic AECs and PBMCs. Z-score difference is presented as AECs relative to PBMCs. (DOCX)

Table S6 Biological Functions in Differentially Methylated Core Genes in AECs Compared to PBMCs. We identified 47 core genes which contain 57 differentially methylated CpG sites between AECs and PBMCs, these genes are classified into 19 overrepresented biological functions. (DOCX)

Acknowledgments

The authors would like to thank Drs Paul McNamara, David Mullane, and Srinivas Poreddy for performing the bronchial brushings. Dr Paul Stevens and Ms Andrea Mladinovic are also acknowledged for technical assistance.

Author Contributions

Conceived and designed the experiments: MSK PDP DAK. Performed the experiments: DS TLH SN ENS KML. Analyzed the data: DS TLH FSG OPG. Contributed reagents/materials/analysis tools: MSK AK SMS. Wrote the paper: DS TLH.

- immunoreactivity in the asthmatic human airway. *Am J Respir Crit Care Med* 157: 1907–1912.
9. Fedorov IA, Wilson SJ, Davies DE, Holgate ST (2005) Epithelial stress and structural remodelling in childhood asthma. *Thorax* 60: 389–394.
 10. de Boer WI, Sharma HS, Baelemans SM, Hoogsteden HC, Lambrecht BN, et al. (2008) Altered expression of epithelial junctional proteins in atopic asthma: possible role in inflammation. *Can J Physiol Pharmacol* 86: 105–112.
 11. Hackett TL, Shaheen F, Johnson A, Wadsworth S, Pechkovsky DV, et al. (2008) Characterization of side population cells from human airway epithelium. *Stem Cells* 26: 2576–2585.
 12. Hackett TL, Warner SM, Stefanowicz D, Shaheen F, Pechkovsky DV, et al. (2009) Induction of epithelial-mesenchymal transition in primary airway epithelial cells from patients with asthma by transforming growth factor-beta1. *Am J Respir Crit Care Med* 180: 122–133.
 13. Hackett TL, Singhera GK, Shaheen F, Hayden P, Jackson GR, et al. (2011) Intrinsic phenotypic differences of asthmatic epithelium and its inflammatory responses to respiratory syncytial virus and air pollution. *Am J Respir Cell Mol Biol* 45: 1090–1100.
 14. Kicic A, Sutanto EN, Stevens PT, Knight DA, Stick SM (2006) Intrinsic biochemical and functional differences in bronchial epithelial cells of children with asthma. *Am J Respir Crit Care Med* 174: 1110–1118.
 15. Mullings RE, Wilson SJ, Puddicombe SM, Lordan JL, Bucchieri F, et al. (2001) Signal transducer and activator of transcription 6 (STAT-6) expression and function in asthmatic bronchial epithelium. *J Allergy Clin Immunol* 108: 832–838.
 16. Sampath D, Castro M, Look DC, Holtzman MJ (1999) Constitutive activation of an epithelial signal transducer and activator of transcription (STAT) pathway in asthma. *J Clin Invest* 103: 1353–1361.
 17. Holgate ST, Lackie P, Wilson S, Roche W, Davies D (2000) Bronchial epithelium as a key regulator of airway allergen sensitization and remodeling in asthma. *Am J Respir Crit Care Med* 162: S113–117.
 18. Asher MI, Keil U, Anderson HR, Beasley R, Crane J, et al. (1995) International Study of Asthma and Allergies in Childhood (ISAAC): rationale and methods. *Eur Respir J* 8: 483–491.
 19. Ferris BG (1978) Epidemiology Standardization Project (American Thoracic Society). *Am Rev Respir Dis* 118: 1–120.
 20. Lane C, Knight D, Burgess S, Franklin P, Horak F, et al. (2004) Epithelial inducible nitric oxide synthase activity is the major determinant of nitric oxide concentration in exhaled breath. *Thorax* 59: 757–760.
 21. McNamara PS, Kicic A, Sutanto EN, Stevens PT, Stick SM (2008) Comparison of techniques for obtaining lower airway epithelial cells from children. *Eur Respir J* 32: 763–768.
 22. Upham JW, Holt BJ, Baron-Hay MJ, Yabuhara A, Hales BJ, et al. (1995) Inhalant allergen-specific T-cell reactivity is detectable in close to 100% of atopic and normal individuals: covert responses are unmasked by serum-free medium. *Clin Exp Allergy* 25: 634–642.
 23. Macaubas C, Sly PD, Burton P, Tiller K, Yabuhara A, et al. (1999) Regulation of T-helper cell responses to inhalant allergen during early childhood. *Clin Exp Allergy* 29: 1223–1231.
 24. Yuen RK, Neumann SM, Fok AK, Penaherrera MS, McFadden DE, et al. (2011) Extensive epigenetic reprogramming in human somatic tissues between fetus and adult. *Epigenetics Chromatin* 4: 7.
 25. Bibikova M, Lin Z, Zhou L, Chudin E, Garcia EW, et al. (2006) High-throughput DNA methylation profiling using universal bead arrays. *Genome Res* 16: 383–393.
 26. Ronneberg JA, Fleischer T, Solvang HK, Nordgard SH, Edvardsen H, et al. (2011) Methylation profiling with a panel of cancer related genes: association with estrogen receptor, TP53 mutation status and expression subtypes in sporadic breast cancer. *Mol Oncol* 5: 61–76.
 27. Kim KY, Kim BJ, Yi GS (2004) Reuse of imputed data in microarray analysis increases imputation efficiency. *BMC Bioinformatics* 5: 160.
 28. Davis S, Bilke S (2010) Methylumi: Handle Illumina methylation data. *Bioconductor R package version 132*.
 29. Benito M, Parker J, Du Q, Wu J, Xiang D, et al. (2004) Adjustment of systematic microarray data biases. *Bioinformatics* 20: 105–114.
 30. Du P, Zhang X, Huang CC, Jafari N, Kibbe WA, et al. (2010) Comparison of Beta-value and M-value methods for quantifying methylation levels by microarray analysis. *BMC Bioinformatics* 11: 587.
 31. Bernatavichute YV, Zhang X, Cokus S, Pellegrini M, Jacobsen SE (2008) Genome-wide association of histone H3 lysine nine methylation with CHG DNA methylation in Arabidopsis thaliana. *PLoS One* 3: e3156.
 32. Best CJ, Gillespie JW, Yi Y, Chandramouli GV, Perlmutter MA, et al. (2005) Molecular alterations in primary prostate cancer after androgen ablation therapy. *Clin Cancer Res* 11: 6823–6834.
 33. Storey JD, Tibshirani R (2003) Statistical significance for genomewide studies. *Proc Natl Acad Sci U S A* 100: 9440–9445.
 34. Team RDC (2011) R: A Language and Environment for Statistical Computing. R Foundation for Statistical Computing, Vienna, Austria.
 35. Shin S, Park JS, Kim YJ, Oh T, An S, et al. (2012) Differential gene expression profile in PBMCs from subjects with AERD and ATA: a gene marker for AERD. *Mol Genet Genomics* 287: 361–371.
 36. Shin SW, Oh TJ, Park SM, Park JS, Jang AS, et al. (2011) Asthma-predictive genetic markers in gene expression profiling of peripheral blood mononuclear cells. *Allergy Asthma Immunol Res* 3: 265–272.
 37. Anglim PP, Galler JS, Koss MN, Hagen JA, Turla S, et al. (2008) Identification of a panel of sensitive and specific DNA methylation markers for squamous cell lung cancer. *Mol Cancer* 7: 62.
 38. Bauerschlag DO, Ammerpohl O, Brautigam K, Schem C, Lin Q, et al. (2011) Progression-free survival in ovarian cancer is reflected in epigenetic DNA methylation profiles. *Oncology* 80: 12–20.
 39. Hansen KD, Timp W, Bravo HC, Sabunciyan S, Langmead B, et al. (2011) Increased methylation variation in epigenetic domains across cancer types. *Nat Genet* 43: 768–775.
 40. Kobayashi Y, Absher DM, Gulzar ZG, Young SR, McKenney JK, et al. (2011) DNA methylation profiling reveals novel biomarkers and important roles for DNA methyltransferases in prostate cancer. *Genome Res* 21: 1017–1027.
 41. Sun Z, Asmann YW, Kalari KR, Bot B, Eckel-Passow JE, et al. (2011) Integrated analysis of gene expression, CpG island methylation, and gene copy number in breast cancer cells by deep sequencing. *PLoS One* 6: e17490.
 42. Jaenisch R, Bird A (2003) Epigenetic regulation of gene expression: how the genome integrates intrinsic and environmental signals. *Nat Genet* 33 Suppl: 245–254.
 43. Robertson KD, Wolffe AP (2000) DNA methylation in health and disease. *Nat Rev Genet* 1: 11–19.
 44. Yang Y, Haitchi HM, Cakebread J, Sammut D, Harvey A, et al. (2008) Epigenetic mechanisms silence a disintegrin and metalloprotease 33 expression in bronchial epithelial cells. *J Allergy Clin Immunol* 121: 1393–1399, 1399 e1391–1314.
 45. Yao X, Dai C, Fredriksson K, Dagur PK, McCoy JP, et al. (2011) 5A, an apolipoprotein A-I mimetic peptide, attenuates the induction of house dust mite-induced asthma. *J Immunol* 186: 576–583.
 46. Moffatt MF, Gut IG, Demenais F, Strachan DP, Bouzigon E, et al. (2010) A large-scale, consortium-based genomewide association study of asthma. *N Engl J Med* 363: 1211–1221.
 47. Southam DS, Widmer N, Ellis R, Hirota JA, Inman MD, et al. (2005) Increased eosinophil-lineage committed progenitors in the lung of allergen-challenged mice. *J Allergy Clin Immunol* 115: 95–102.
 48. Rochman Y, Spolski R, Leonard WJ (2009) New insights into the regulation of T cells by gamma(c) family cytokines. *Nat Rev Immunol* 9: 480–490.
 49. Zhu J, Cote-Sierra J, Guo L, Paul WE (2003) Stat5 activation plays a critical role in Th2 differentiation. *Immunity* 19: 739–748.
 50. Li G, Liu Z, Ran P, Qiu J, Zhong N (2004) Activation of signal transducer and activator of transcription 5 (STAT5) in splenocyte proliferation of asthma mice induced by ovalbumin. *Cell Mol Immunol* 1: 471–474.
 51. Xu R, Nelson CM, Muschler JL, Veiseh M, Vonderhaar BK, et al. (2009) Sustained activation of STAT5 is essential for chromatin remodeling and maintenance of mammary-specific function. *J Cell Biol* 184: 57–66.
 52. Liu J, Kern JA (2002) Neuregulin-1 activates the JAK-STAT pathway and regulates lung epithelial cell proliferation. *Am J Respir Cell Mol Biol* 27: 306–313.
 53. Kagami S, Nakajima H, Kumano K, Suzuki K, Suto A, et al. (2000) Both stat5a and stat5b are required for antigen-induced eosinophil and T-cell recruitment into the tissue. *Blood* 95: 1370–1377.
 54. Kadrmals JL, Beckerle MC (2004) The LIM domain: from the cytoskeleton to the nucleus. *Nat Rev Mol Cell Biol* 5: 920–931.
 55. Chang DF, Belaguli NS, Iyer D, Roberts WB, Wu SP, et al. (2003) Cysteine-rich LIM-only proteins CRP1 and CRP2 are potent smooth muscle differentiation cofactors. *Dev Cell* 4: 107–118.
 56. Weiskirchen R, Gunther K (2003) The CRP/MLP/TLP family of LIM domain proteins: acting by connecting. *Bioessays* 25: 152–162.
 57. Lanningham-Foster L, Green CL, Langkamp-Henken B, Davis BA, Nguyen KT, et al. (2002) Overexpression of CRIP in transgenic mice alters cytokine patterns and the immune response. *Am J Physiol Endocrinol Metab* 282: E1197–1203.
 58. Hallquist NA, Khoo C, Cousins RJ (1996) Lipopolysaccharide regulates cysteine-rich intestinal protein, a zinc-finger protein, in immune cells and plasma. *J Leukoc Biol* 59: 172–177.
 59. Latonen L, Jarvinen PM, Laiho M (2008) Cytoskeleton-interacting LIM-domain protein CRP1 suppresses cell proliferation and protects from stress-induced cell death. *Exp Cell Res* 314: 738–747.
 60. Angrisano T, Lembo F, Pero R, Natale F, Fusco A, et al. (2006) TACC3 mediates the association of MBD2 with histone acetyltransferases and relieves transcriptional repression of methylated promoters. *Nucleic Acids Res* 34: 364–372.
 61. Lu L, Ma J, Li Z, Lan Q, Chen M, et al. (2011) All-trans retinoic acid promotes TGF-beta-induced Tregs via histone modification but not DNA demethylation on Foxp3 gene locus. *PLoS One* 6: e24590.
 62. Zheng S, Pan YX (2011) Histone modifications, not DNA methylation, cause transcriptional repression of p16 (CDKN2A) in the mammary glands of offspring of protein-restricted rats. *J Nutr Biochem* 22: 567–573.
 63. Lindahl Allen M, Koch CM, Clelland GK, Dunham I, Antoniou M (2009) DNA methylation-histone modification relationships across the desmin locus in human primary cells. *BMC Mol Biol* 10: 51.
 64. Dallosso AR, Hancock AL, Szemes M, Moorwood K, Chilukamarri L, et al. (2009) Frequent long-range epigenetic silencing of protocadherin gene clusters on chromosome 5q31 in Wilms' tumor. *PLoS Genet* 5: e1000745.
 65. Dallosso AR, Oster B, Greenhough A, Thorsen K, Curry TJ, et al. (2012) Long-range epigenetic silencing of chromosome 5q31 protocadherins is involved in

- early and late stages of colorectal tumorigenesis through modulation of oncogenic pathways. *Oncogene*.
66. Frigola J, Song J, Stürzaker C, Hinshelwood RA, Peinado MA, et al. (2006) Epigenetic remodeling in colorectal cancer results in coordinate gene suppression across an entire chromosome band. *Nat Genet* 38: 540–549.
 67. Javierre BM, Rodriguez-Ubreva J, Al-Shahrour F, Corominas M, Grana O, et al. (2011) Long-range epigenetic silencing associates with deregulation of Ikaros targets in colorectal cancer cells. *Mol Cancer Res* 9: 1139–1151.
 68. Novak P, Jensen T, Oshiro MM, Watts GS, Kim CJ, et al. (2008) Agglomerative epigenetic aberrations are a common event in human breast cancer. *Cancer Res* 68: 8616–8625.
 69. Mayor R, Casadome L, Azuara D, Moreno V, Clark SJ, et al. (2009) Long-range epigenetic silencing at 2q14.2 affects most human colorectal cancers and may have application as a non-invasive biomarker of disease. *Br J Cancer* 100: 1534–1539.
 70. Holgate ST (2011) The sentinel role of the airway epithelium in asthma pathogenesis. *Immunol Rev* 242: 205–219.
 71. Robinson DS, Hamid Q, Ying S, Tsicopoulos A, Barkans J, et al. (1992) Predominant TH2-like bronchoalveolar T-lymphocyte population in atopic asthma. *N Engl J Med* 326: 298–304.