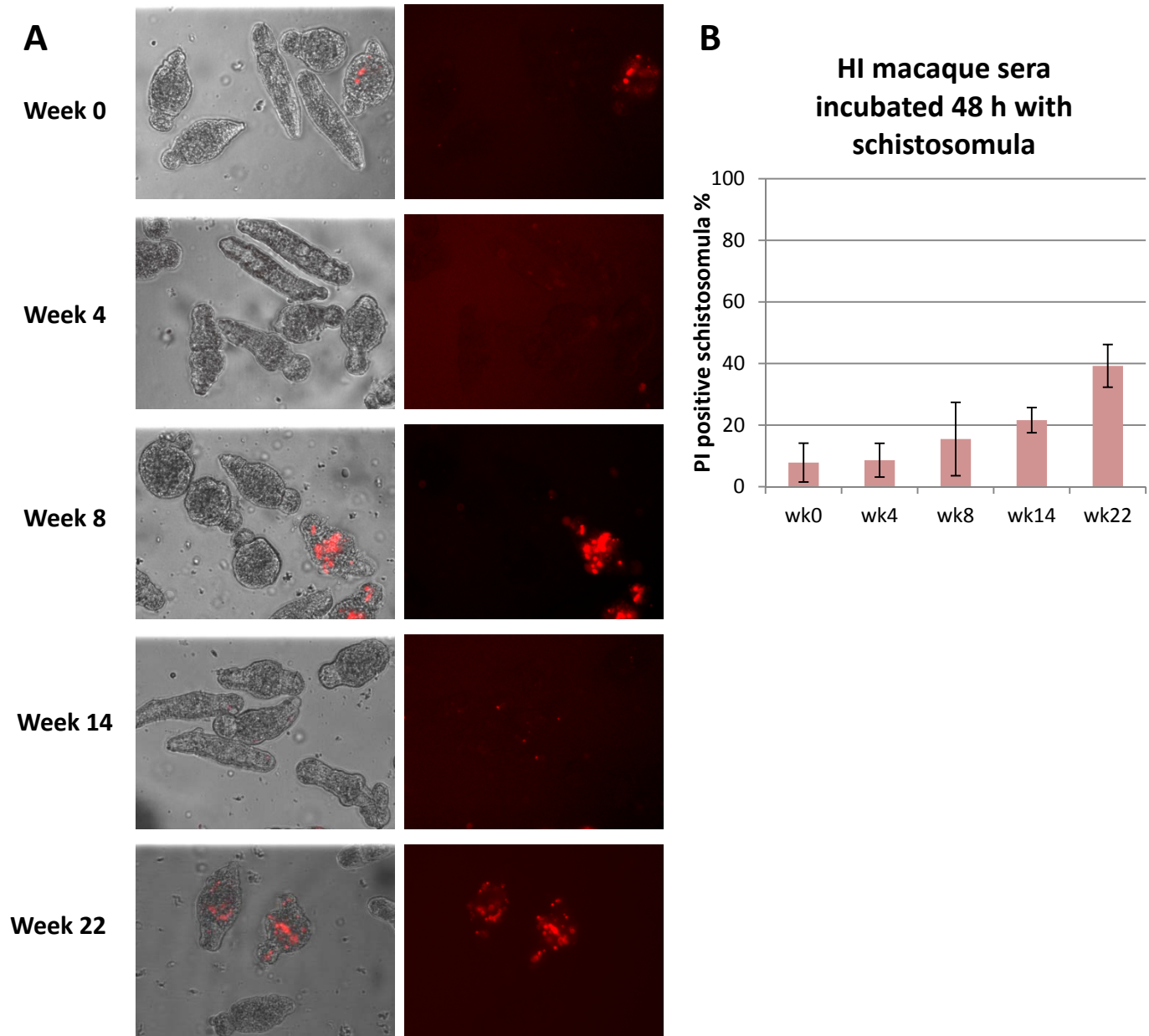


***In vitro* schistosomula incubation with heat inactivated *S. japonicum*-infected macaque sera**



In vitro schistosomula incubation with heat inactivated (HI) *S. japonicum*-infected rhesus macaque sera collected at different infection time points.

HI Macaque sera were incubated with 3 h transformed schistosomula. Loss of Schistosomula integrity was visualized by PI positivity. A) Gross morphology of schistosomula after 48 h of incubation with HI macaque sera. B) Percentage of PI-positive schistosomula after 48 h of incubation with HI macaque sera at different infection time points.