

CORRECTION

## Correction: Characterization of Lethal Zika Virus Infection in AG129 Mice

**Matthew T. Aliota, Elizabeth A. Caine, Emma C. Walker, Katrina E. Larkin, Erwin Camacho, Jorge E. Osorio**

The panels in [Fig 4](#) are switched. The image that appears as part A should appear as part B, and the image that appears for part B should appear as part A. The image that appears as part C should appear as part D, and the image that appears for part D should appear as part C.

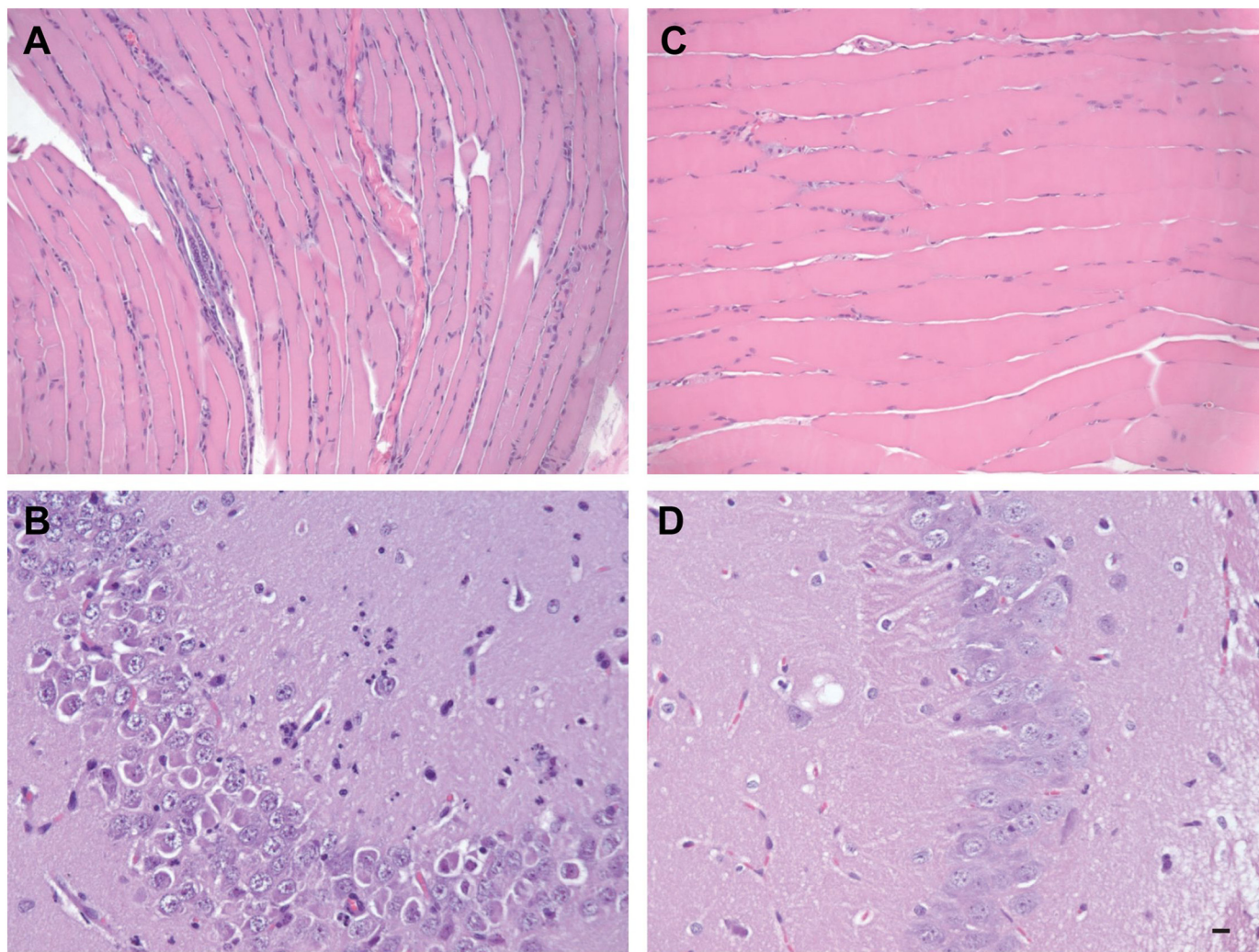


### OPEN ACCESS

**Citation:** Aliota MT, Caine EA, Walker EC, Larkin KE, Camacho E, Osorio JE (2016) Correction: Characterization of Lethal Zika Virus Infection in AG129 Mice. PLoS Negl Trop Dis 10(5): e0004750. doi:10.1371/journal.pntd.0004750

**Published:** May 23, 2016

**Copyright:** © 2016 Aliota et al. This is an open access article distributed under the terms of the [Creative Commons Attribution License](#), which permits unrestricted use, distribution, and reproduction in any medium, provided the original author and source are credited.



**Fig 4. Comparative histological imaging of skeletal muscle and brain after mock infection and infection with ZIKV.** Musculature from the posterior rear limb of a ZIKV-infected mouse revealing nuclear rowing as well as degenerate muscle fibers and infiltrating inflammatory cells (**A**). Hippocampal section from a ZIKV-infected mouse revealing neutrophilic infiltration (**B**). Musculature from the same site in a mock-infected mouse (**C**). A section of hippocampus in the brain of mock-infected mouse (**D**). Scale bar, 20  $\mu$ m. Data are representative of two independent experiments (n = 4 and 5).

doi:10.1371/journal.pntd.0004750.g001

## Reference

1. Aliota MT, Caine EA, Walker EC, Larkin KE, Camacho E, Osorio JE (2016) Characterization of Lethal Zika Virus Infection in AG129 Mice. *PLoS Negl Trop Dis* 10(4): e0004682. doi: [10.1371/journal.pntd.0004682](https://doi.org/10.1371/journal.pntd.0004682) PMID: [27093158](https://pubmed.ncbi.nlm.nih.gov/27093158/)