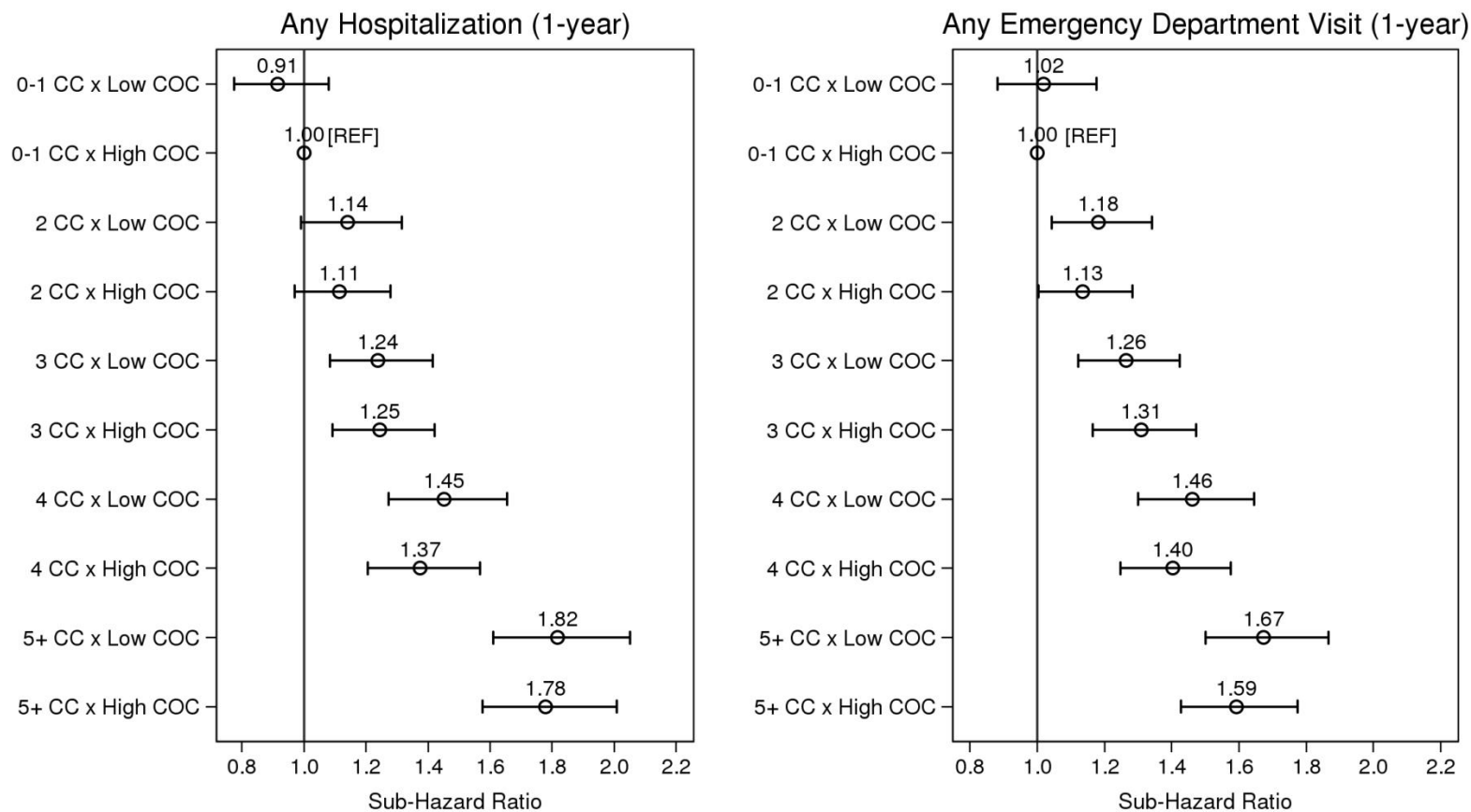


S2 Fig. The association between level of multimorbidity and 1-y risk of acute hospitalization and emergency department visit as modified by continuity of care, including only individuals with three or more physician visits (sensitivity analysis 3).



Notes:

CC = Chronic Conditions; COC = Continuity of Care

Sub-Hazard Ratios account for the competing risks of death and LTC admission

Estimates adjusted for age, sex, income, marital status, rurality, prior hospitalizations and ED visits, MDS-HSI and CHES score

Study population restricted to individuals with 3 or more physician visits (median COC=0.63)