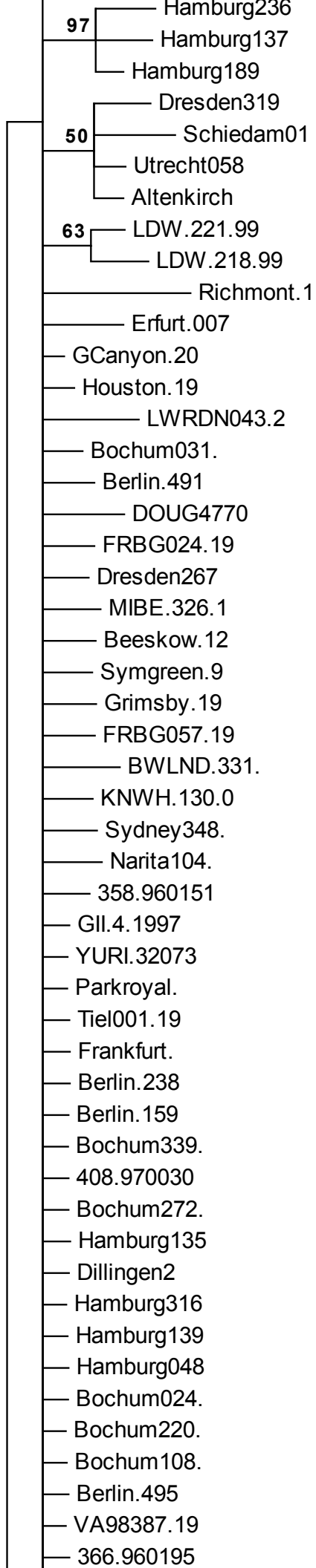
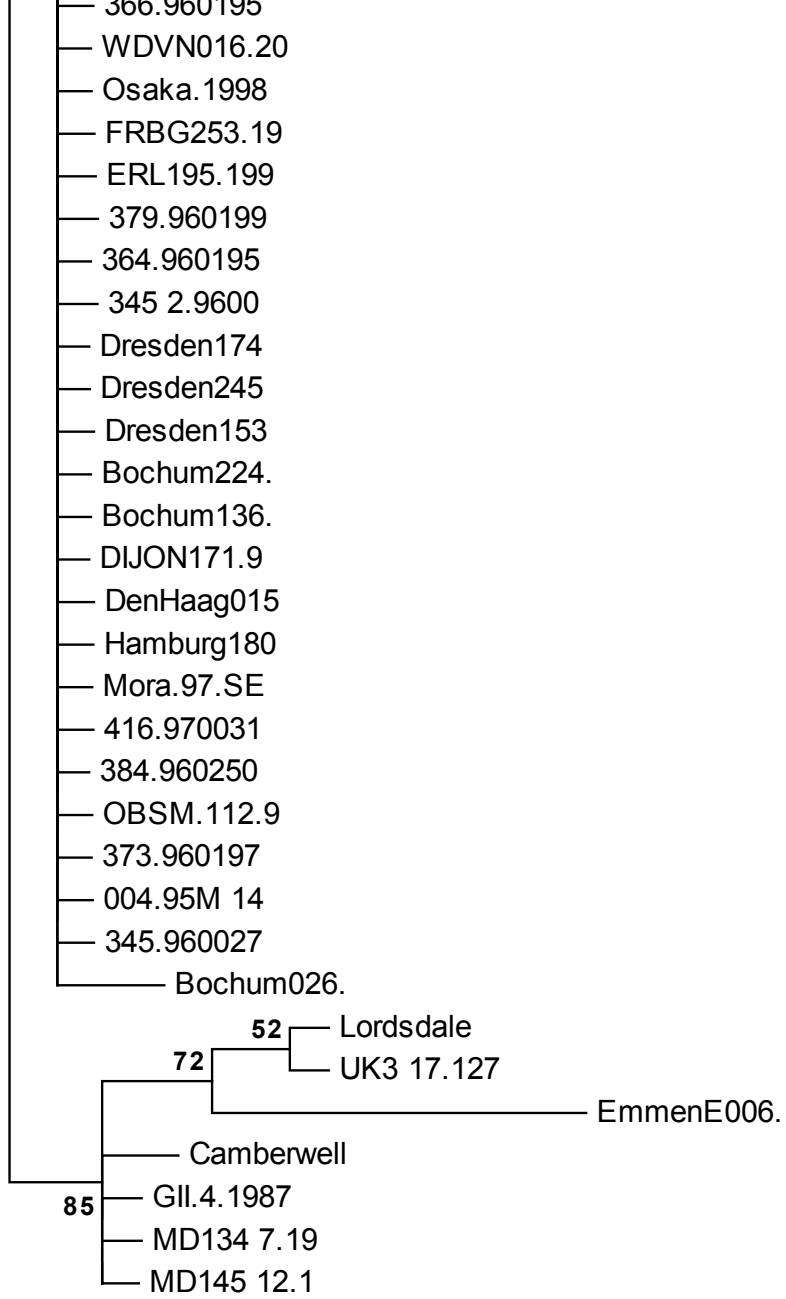


- OXF.B1S12.
- OXF.B1S11.
- OXF.B1S4.2
- OXF.B1S2.2
- OXF.B1S1.2
- DenHaag001
- Apeldoorn0
- Carlow.200
- OXF.B5S19.
- OXF.B5S13.
- CS G12002.
- 78 — Germanton.
- CS G4.2002
- Elsloo012.
- CS D1.2002
- CS G2.2002
- OXF.B2S26.
- OXF.B2S25.
- OXF.B3S16.
- OXF.B3S4.2
- OXF.B3S19.
- OXF.B3S18.
- OXF.B6S3.2
- OXF.B3S20.
- OXF.B5S23.
- OXF.B6S2.2
- OXF.B6S4.2
- OXF.B6S5.2
- CHPNRT.200
- Didcot.B9S
- Witney.B7S
- Banbury.B9
- OXF.B5S1.2
- OXF.B2S16.
- OXF.B4S6.2
- OXF.B4S5.2
- OXF.B4S7.2
- OXF.B4S4.2
- Langen1061
- FHills
- OXF.B5S22.
- OXF.B4S2.2
- MD 2004.20
- OXF.B8S5.2
- Middelburg
- WeertE022.
- Warren.200
- GII.4.2002
- GA04.2004.





0.01