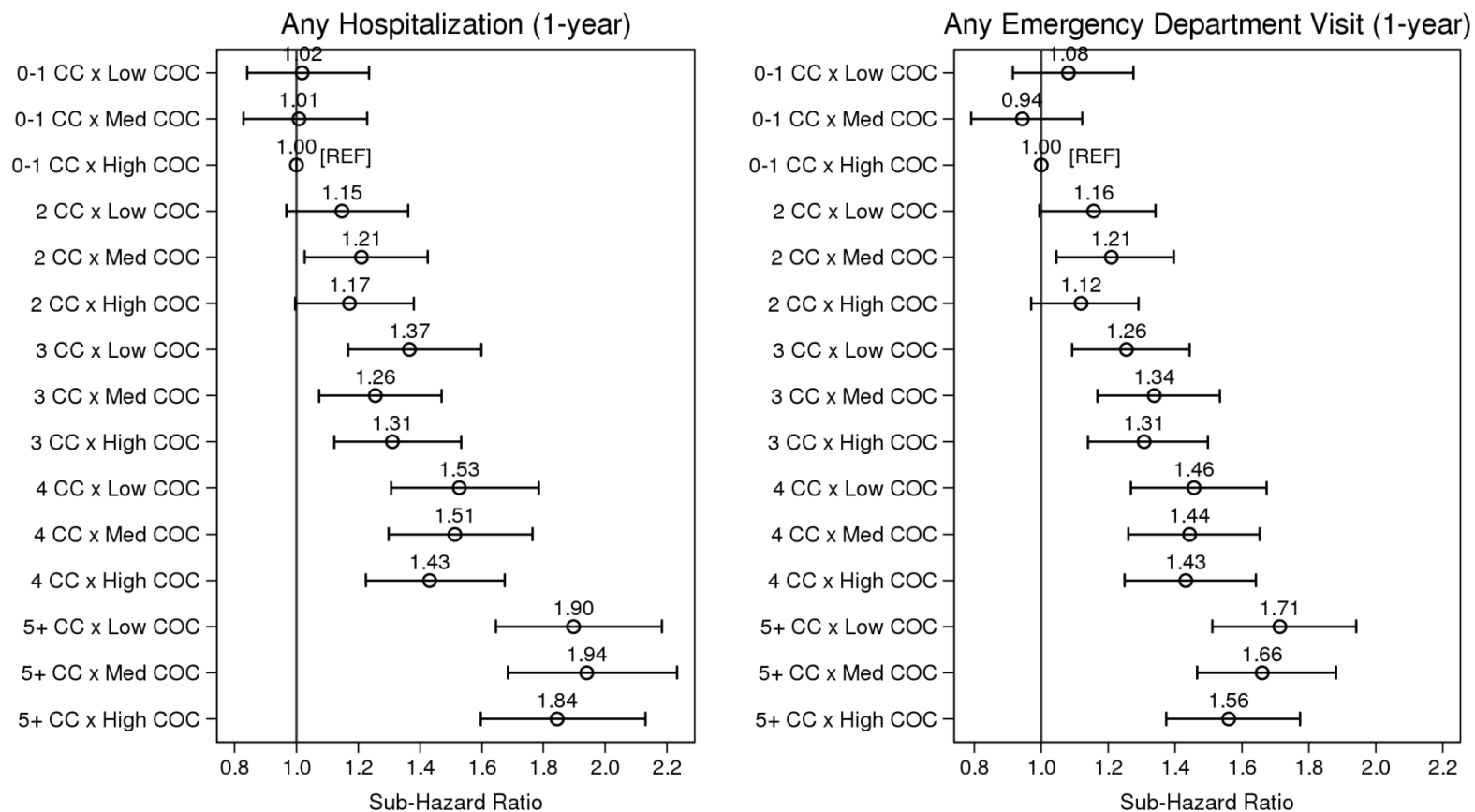


S3 Fig. The association between level of multimorbidity and 1-y risk of acute hospitalization and emergency department visit as modified by continuity of care defined by tertiles (sensitivity analysis 4).



Notes:
 CC = Chronic Conditions; COC = Continuity of Care
 Sub-Hazard Ratios account for the competing risks of death and LTC admission
 Estimates adjusted for age, sex, income, marital status, rurality, prior hospitalizations and ED visits, MDS-HSI and CHES score
 Continuity of care defined by tertiles (Low: 0.00-0.47, Medium: 0.48-0.79, High:0.80-1.00)