

# Survival-Related Profile, Pathways, and Transcription Factors in Ovarian Cancer

Anne P. G. Crijns<sup>1</sup>✉, Rudolf S. N. Fehrmann<sup>1,2,3</sup>✉, Steven de Jong<sup>2</sup>, Frans Gerbens<sup>3</sup>, Gert Jan Meersma<sup>1</sup>, Harry G. Klip<sup>1</sup>, Harry Hollema<sup>4</sup>, Robert M. W. Hofstra<sup>3</sup>, Gerard J. te Meerman<sup>3</sup>, Elisabeth G. E. de Vries<sup>2</sup>, Ate G. J. van der Zee<sup>1\*</sup>

**1** Department of Gynecologic Oncology, University Medical Centre Groningen, University of Groningen, Groningen, The Netherlands, **2** Department of Medical Oncology, University Medical Centre Groningen, University of Groningen, Groningen, The Netherlands, **3** Department of Genetics, University Medical Centre Groningen, University of Groningen, Groningen, The Netherlands, **4** Department of Pathology, University Medical Centre Groningen, University of Groningen, Groningen, The Netherlands

**Funding:** This study was supported by grant UMCG 2002-2681 from the Dutch Cancer Society. The funders had no role in the study design, data collection and analysis, decision to publish, or preparation of the manuscript.

**Competing Interests:** The authors have declared that no competing interests exist.

**Academic Editor:** Steven Narod, Centre for Research in Women's Health, Canada

**Citation:** Crijns APG, Fehrmann RSN, de Jong S, Gerbens F, Meersma GJ, et al. (2009) Survival-related profile, pathways, and transcription factors in ovarian cancer. *PLoS Med* 6(2): e1000024. doi:10.1371/journal.pmed.1000024

**Received:** May 7, 2008

**Accepted:** December 19, 2008

**Published:** February 3, 2009

**Copyright:** © 2009 Crijns et al. This is an open-access article distributed under the terms of the Creative Commons Attribution License, which permits unrestricted use, distribution, and reproduction in any medium, provided the original author and source are credited.

**Abbreviations:** CI, confidence interval; Ct, comparative threshold; FDR, false discovery rate; HR, hazard ratio; KEGG, Kyoto Encyclopedia of Genes and Genomes; PC, principal component; PCA, principal components analysis; qRT-PCR, quantitative real-time-PCR

\* To whom correspondence should be addressed. E-mail: A.G.J.van.der.Zee@og.umcg.nl

✉ These authors contributed equally to this work.

## ABSTRACT

### Background

Ovarian cancer has a poor prognosis due to advanced stage at presentation and either intrinsic or acquired resistance to classic cytotoxic drugs such as platinum and taxoids. Recent large clinical trials with different combinations and sequences of classic cytotoxic drugs indicate that further significant improvement in prognosis by this type of drugs is not to be expected. Currently a large number of drugs, targeting dysregulated molecular pathways in cancer cells have been developed and are introduced in the clinic. A major challenge is to identify those patients who will benefit from drugs targeting these specific dysregulated pathways. The aims of our study were (1) to develop a gene expression profile associated with overall survival in advanced stage serous ovarian cancer, (2) to assess the association of pathways and transcription factors with overall survival, and (3) to validate our identified profile and pathways/transcription factors in an independent set of ovarian cancers.

### Methods and Findings

According to a randomized design, profiling of 157 advanced stage serous ovarian cancers was performed in duplicate using ~35,000 70-mer oligonucleotide microarrays. A continuous predictor of overall survival was built taking into account well-known issues in microarray analysis, such as multiple testing and overfitting. A functional class scoring analysis was utilized to assess pathways/transcription factors for their association with overall survival. The prognostic value of genes that constitute our overall survival profile was validated on a fully independent, publicly available dataset of 118 well-defined primary serous ovarian cancers. Furthermore, functional class scoring analysis was also performed on this independent dataset to assess the similarities with results from our own dataset. An 86-gene overall survival profile discriminated between patients with unfavorable and favorable prognosis (median survival, 19 versus 41 mo, respectively; permutation *p*-value of log-rank statistic = 0.015) and maintained its independent prognostic value in multivariate analysis. Genes that composed the overall survival profile were also able to discriminate between the two risk groups in the independent dataset. In our dataset 17/167 pathways and 13/111 transcription factors were associated with overall survival, of which 16 and 12, respectively, were confirmed in the independent dataset.

### Conclusions

Our study provides new clues to genes, pathways, and transcription factors that contribute to the clinical outcome of serous ovarian cancer and might be exploited in designing new treatment strategies.

*The Editors' Summary of this article follows the references.*



## Introduction

Ovarian carcinoma is the leading cause of death from gynecologic malignancies in the Western world [1]. Debulking surgery followed by platinum-based chemotherapy is considered standard of care for patients with advanced stage ovarian cancer, but despite an initial response rate of 65%–80% to first-line chemotherapy, most patients will relapse with drug-resistant disease [2]. Consequently, the 5-y survival rate of patients with advanced-stage disease is only about 5%–30% [3].

To date, a variety of studies have employed gene expression profiling to classify ovarian carcinomas in clinically relevant subtypes [4–9]. These studies provided valuable first clues to molecular changes in serous ovarian cancer that might be exploited in new treatment strategies. However, most studies were of relatively limited size and the number of overlapping genes in the identified profiles was minimal. Although identification of gene expression profiles associated with clinically relevant subtypes in ovarian cancer is important, knowledge is now rapidly emerging on how genes interact in pathways, networks and complexes; this new information allows us to unravel the cellular pathways determining the biological behavior of ovarian cancer, and these pathways might be successfully targeted with drugs.

The aim of our study was to (1) develop a gene expression profile associated with overall survival in advanced-stage serous ovarian cancer, (2) assess the association of pathways and transcription factors with overall survival, and (3) validate our profile and identified pathways/transcription factors in a fully independent, publicly available dataset of serous ovarian cancers.

## Materials and Methods

### Patients and Tumor Samples

The study population consisted of 157 consecutive patients with advanced-stage serous ovarian cancer operated on by a gynecologic oncologist from the University Medical Center Groningen (UMCG, Groningen, The Netherlands) in the period 1990–2003. All patients were treated according to Dutch guidelines, which are based on the International Federation of Gynecology and Obstetrics (FIGO) guidelines [10,11]. Standard treatment included cytoreductive surgery followed by platinum-based chemotherapy (in combination with paclitaxel after 1996). For follow-up, patients were seen every 3 mo for the first 2 y. Thereafter, follow-up visits had an interval of 4 mo in the third year, 6 mo in the fourth and fifth year, and once a year in the sixth to tenth year. A follow-up visit comprised a general physical and gynecologic examination. CA125 serum levels were also routinely determined.

Overall survival was calculated from the date of primary surgery to the date of last follow-up (right-censored) or to the date of death due to ovarian cancer. Patients who died from intercurrent disease were right-censored at the time of death. All tumor samples were obtained at primary surgery prior to chemotherapy, flash frozen in liquid nitrogen, and stored at  $-80^{\circ}\text{C}$ . Samples were confirmed to comprise tumor cells (median percentage tumor cells: 70%, interquartile range: 50%–80%), as examined after hematoxylin and eosin staining of frozen sections. Patients gave informed consent for collection and storage of tissue samples in a tissue bank for

future research. All relevant patient data were retrieved and transferred into an anonymous, password-protected, database. The patients' identity was protected by study-specific, unique patient codes and their true identity was only known to two dedicated data managers. According to Dutch regulations, these precautions meant no further institutional review board approval was needed (<http://www.federa.org/>).

### RNA Extraction and Amplification

Total RNA from tumor samples was subjected to cesium chloride density gradient ultracentrifugation (Roche, Almere, The Netherlands). After total RNA samples had been given DNase treatment (Megascript T7 kit, Ambion, Huntingdon, UK), they were checked for residual DNA using a dinucleotide primer set (D11S875) specific for genomic DNA [12]. mRNA was linearly amplified by in vitro transcription using T7 RNA polymerase (Megascript T7 kit) [13]. Quality/integrity of total and amplified mRNA (cRNA) was checked by spectrophotometric analysis (criterion: UV 260/280 ratio  $> 1.8$  for each sample), and/or agarose gel electrophoresis.

### Microarray Experiments

Two randomly selected cRNA samples were hybridized together on the arrays for intensity-based instead of ratio-based analysis of the microarray data [14]. All cRNA samples (1.5  $\mu\text{g}$ ) were labeled with ULS-Cy5 and ULS-Cy3 label (BIOKÉ, Leiden, The Netherlands) and hybridized to  $\sim 35,000$  70-mer two-color oligonucleotide microarrays ( $\sim 35,000$  Operon v3.0 probes), manufactured by The Netherlands Cancer Institute (Amsterdam, The Netherlands, <http://microarrays.nki.nl>) [13]. Because each tumor sample was profiled once with Cy5 and once with Cy3, there was one replicate of the whole experiment. Samples were hybridized according to a randomized design (Figure S1) to prevent systematic biases such as those caused by batch effects or technical variation that can be introduced during labeling, hybridization, and scanning [15–17]. After randomization of the processing order of the arrays from different batches, Cy5- and Cy3-labeled cRNA samples were randomly placed onto the arrays. Arrays were scanned and expression values were calculated. The MIAME-compliant microarray data are available at <http://www.ncbi.nlm.nih.gov/geo/> under accession number GSE13876.

### Quantitative Real Time-PCR

Total RNA from 31 specimens, previously extracted, isolated, and used for the microarray study, was reverse transcribed into cDNA using MMLV reverse transcriptase and hexameric random primer pd(N)6 (Invitrogen, Breda, The Netherlands). The profile of the reverse transcription reaction was 10 min at  $25^{\circ}\text{C}$ , 50 min at  $37^{\circ}\text{C}$ , and 15 min at  $70^{\circ}\text{C}$ .

Quantitative real-time PCR (qRT-PCR) was performed on 12 ng of cDNA. Applied Biosystems Taqman Gene expression assays, and Taqman Universal PCR master mix (Applied Biosystems, Nieuwerkerk a/d IJssel, The Netherlands) were used to perform qRT-PCR on *FGFBP1* (Hs00183226\_m1, Applied Biosystems), *TMEM45A* (Hs01046616\_m1, Applied Biosystems), *FKBP7* (Hs00383941\_m1, Applied Biosystems), *CCL28* (Hs00955110\_m1, Applied Biosystems), and the housekeeping gene *GAPDH* (Hs02758991\_g1, Applied Biosystems) [18]. All reactions were performed in 384-well plates

in triplicate using an ABI PRISM 7900 HT Sequence Detection System. PCR reaction conditions were as follows: Step 1: 50 °C for 2 min, step 2: 95 °C for 10 min, step 3: 50 cycles of 95 °C for 15 s, followed by 60 °C for 1 min. We used the comparative threshold cycle (Ct) method to calculate the expression of the gene of interest relative to *GAPDH* in each sample by subtracting the mean Ct value of *GAPDH* from the mean Ct value of each gene, obtaining the  $\Delta$ Ct value.

### Statistical Methods

Quantile normalization was applied to  $\log_2$ -transformed Cy5 and Cy3 intensities [19]. The goal of the quantile normalization is to equalize the distribution of expression values for each array in a set of arrays: (1) expression values of each microarray were sorted, (2) median intensity in each rank across the microarrays was computed, and (3) each expression value was replaced by the median intensity at its rank.

Principal components analysis (PCA) was performed for quality control. It has been shown that the most significant principal component for a gene expression data matrix is frequently a constant pattern, which dominates the data [20]. So, the first principal component explaining the largest part of the variation could be considered variation that the arrays have in common [21,22]. Next, correlation with the first principal component was calculated for each individual array (factor loading). Factor loadings of the first principal component for an individual array can be seen as a quality index, as arrays of lesser quality would have lower or distinctly different correlations than arrays of good quality. Samples with a factor loading with the first principal components of less than 2 times the standard deviation from the mean were excluded as their hybridizations were considered to be of low quality [21,22]. Operon V3.0 probe identifiers (~35,000) were converted to official gene symbols using probe annotations provided by The Netherlands Cancer Institute ([http://microarrays.nki.nl/download/files/operon\\_hs\\_060614.xls](http://microarrays.nki.nl/download/files/operon_hs_060614.xls)). A description of the annotation methodology used by The Netherlands Cancer Institute is provided on their Web site (<http://microarrays.nki.nl/services/blastdata.html>). We have only used those oligonucleotides that specifically respond in a BLAST search with a single hit on a gene. Expression values of multiple oligonucleotide probes targeting the same gene (identical gene symbol) were averaged, resulting in a total of 15,909 unique genes for further analysis. Subsequently, expression data obtained from Cy5- and Cy3-labeled samples of the same tumor were averaged (mean correlation  $0.93 \pm$  standard deviation 0.04). Microarray analyses were performed with the software package BRB Array Tools 3.6.0, developed by the Biometric Research Branch of the US National Cancer Institute (<http://linus.nci.nih.gov/BRB-ArrayTools.html>).

**Survival prediction.** An overall survival profile was built using the supervised principal components method [23]. For each iteration of the complete cross-validation, 10% of the cases were omitted, and a subset of genes was selected that correlated with overall survival at a significance level of  $p < 0.001$  for the remaining cases. The significance of each gene was measured based on a univariate Cox proportional hazards regression of survival time versus the log expression level. Next, PCA was performed to reduce the dimensionality of this selected subset of genes. Principal components (PCs), which are linear additions of weighted gene expression

signals, were constructed in such a way that the first PC explained the largest amount of variance in our dataset and each subsequent PC explained the largest amount of the remaining variance while remaining uncorrelated with the previously constructed PC. Cox proportional hazards model was fitted to the data (with 10% of cases omitted) using the first five PCs as predictor variables, providing a regression coefficient (weight) for each principal component. The regression coefficients in combination with the first five PCs were used to calculate the predictive index for each sample. The 10% omitted test cases were classified as high or low risk based on whether their predictive index was above or below the median of the predictive indices for the 90% of cases in the training set. This entire procedure was repeated, leaving out a different 10% of cases until each case had been omitted exactly once and the cross-validated risk groups were determined for all cases. So the cross-validated risk group for each case was determined based on a predictor model that did not use that case in any way in its construction.

Kaplan-Meier survival curves were plotted for the predicted overall survival risk classes (high or low) giving a fair representation of the value of the expression profiles for predicting overall survival risk and the log-rank statistic was computed. To assess the significance of the log-rank statistic and the degree of overfitting, a phenotype permutation test based on 1,000 permutations was performed [24]. Survival data were randomly shuffled among the cases and the entire cross-validation process described above was repeated. For each random reshuffling, the process was repeated, new cross-validated Kaplan-Meier survival curves created, and the log-rank statistic for the random shuffling was computed, providing a null-distribution of the log-rank statistic. The tail area of this null distribution beyond the log-rank statistic obtained from the real data was the permutation significance level for testing the null hypothesis of no relation between the expression data and overall survival. A graphical representation of the survival prediction method is given in Figure S2.

The genes that are selected as univariately associated with survival will differ for each iteration of the cross-validation, because the entire predictor development process must be repeated from the beginning for each new cross-validated training set. The final gene set (profile) presented in the results was selected when the supervised principal components method was applied to the full dataset with no samples omitted.

Furthermore, to evaluate whether our profile provides more accurate predictions than that provided by standard clinicopathological covariates we performed a multivariate analysis using Cox proportional hazards regression.

**Pathway and transcription factor analysis.** Functional gene set enrichment analysis was performed as described by Pavlidis et al. [25]. Predefined gene sets were analyzed to indicate which contained more genes correlated with overall survival than would be expected by chance. First a univariate Cox proportional hazards  $p$ -value was computed for all 15,909 unique genes. Then  $p$ -values of a subset of genes belonging to a functional set were summarized by the LS and KS summary statistics. For a set of  $n$  genes, the LS statistic is defined as the mean negative natural logarithm of single gene  $p$ -values. The KS statistic is defined as the maximum difference between  $i/n$  and  $p_i$ , where  $p_i$  is the  $i^{\text{th}}$  smallest  $p$ -value. This is the Kolmogorov-Smirnov statistic for testing if the  $p$ -values are of uniform distribution. The statistical significance of a func-

**Table 1.** Patient Characteristics ( $n = 157$ )

Characteristic	Category or Measure	<i>n</i> or Value	Percentage
<b>Age, y</b>	Median (range)	60 (21–84)	—
<b>Survival, mo</b>	Median (range)	21 (1–234)	—
<b>Stage (FIGO)</b>	IIIA	2	1.3
	IIIB	6	3.8
	IIIC	125	79.6
	IV	24	15.3
<b>Grade</b>	Well differentiated	14	8.9
	Moderately differentiated	45	28.7
	Poorly differentiated	82	52.2
	Undifferentiated	3	1.9
	Unknown	13	8.3
<b>Debulking status</b>	Complete debulking	22	14
	< 2 cm	21	13.4
	≥ 2 cm	100	63.7
	Positive, size unknown	9	5.7
	Unknown	5	3.2
<b>Chemotherapy</b>	Carboplatin	2	1.2
	Cyclophosphamide/carboplatin	88	56.1
	Cyclophosphamide/cisplatin	12	7.6
	Paclitaxel/cisplatin	7	4.5
	Paclitaxel/carboplatin	48	30.6
<b>Ascites</b>	< 1 L	49	31.2
	≥ 1 L	71	45.2
	Unknown	37	23.6

All patients received platinum-based chemotherapy postoperatively.  
doi:10.1371/journal.pmed.1000024.t001

tional gene set containing  $n$  genes is evaluated by computing the empirical distribution of these summary statistics in random samples of  $n$  genes. A total of 167 functional gene sets reported in the Kyoto Encyclopedia of Genes and Genomes (KEGG) database and 111 reported in the Transcriptional Regulatory Element Database (TRED) were analyzed [26,27].

**External validation.** To establish that our profile was associated with prognosis in an independent set of serous ovarian cancers, we used publicly available microarray data [4,9,28]. Available clinicopathologic characteristics of the 118 patients as reported previously are summarized in Table S1. Differences in microarray platforms (Operon V3 versus Affymetrix HU133A) meant that direct application of our prediction model on this independent dataset was not feasible [29]. The platforms differ, for example, in the reporter systems (short versus long oligonucleotides), labeling techniques, and hybridization protocols. Furthermore, many probes from the two platforms assigned to the same gene symbol are in fact detecting different splicing variants. Therefore, the genes composing our profile, but not the prediction rule, were generalizable to the independent dataset using a previously described methodology [30]. Probe sets from the Affymetrix HU133A microarray related to the genes in our profile were selected. Subsequently, we applied the survival prediction method, with cross-validation and permutation testing as described above, to assess the performance of a classifier for the independent dataset based only on these selected probes; however, this time a significance threshold of 0.9999 was used to ensure that all selected probes representing genes from our survival profile were used in each iteration of the cross-validation. Furthermore, functional class scoring analysis for pathways and

transcription factors as described above using all available probes was also performed on this independent dataset to compare results [25].

**Oncogenic pathway activation analysis.** Recently, Bild et al. experimentally generated expression signatures that reflect the activation of various oncogenic signaling pathways, and provided software to assess the activation status in individual expression profiles [28]. We used these publicly available expression profiles and software to assess the activation probability of the c-Myc, H-Ras, c-Src, E2F3, and  $\beta$ -catenin pathway in our 157 ovarian tumor samples. For each pathway we divided the tumor samples into a group with an activation probability  $p < 0.5$  and a group with activation probability  $p > 0.5$ . Next, Kaplan-Meier survival curves were plotted for both groups and the log-rank statistic computed. A significant log-rank statistic would indicate an association between the activation status of the oncogenic pathway and overall survival. Furthermore, to assess the combined effect of the five oncogenic pathways on overall survival, we applied average linkage hierarchical clustering according to the uncentered correlation measure on the activation probabilities. Kaplan-Meier survival curves were plotted for the top two clusters and the log-rank statistic was computed.

## Results

### Patient Characteristics

Clinicopathologic characteristics of the 157 platinum-treated patients with serous ovarian cancer are summarized in Table 1. For the whole group the median overall survival time was 21 mo (range 1–234 mo), and the 5-y overall survival rate was 27%.

**Table 2.** Genes Composing the Overall Survival Profile

Gene Symbol	p-Value	%CV Support <sup>a</sup>	Hazard Ratio	Description
AAK1	0.000645	40	0.48	AP2 associated kinase 1
ACSM1	0.000361	60	0.27	Acyl-CoA synthetase medium-chain family member 1
AGPAT7	0.000418	60	0.33	1-Acylglycerol-3-phosphate O-acyltransferase 7 (lysophosphatidic acid acyltransferase, eta)
AIPL1	0.000989	30	0.38	Aryl hydrocarbon receptor interacting protein-like 1
ATP5D	0.000133	90	0.52	ATP synthase, H <sup>+</sup> transporting, mitochondrial F1 complex, delta subunit
BAX	0.000964	50	0.39	BCL2-associated X protein
BRSK1	0.000981	30	0.63	BR serine/threonine kinase 1
C10orf80	0.000407	40	0.35	Chromosome 10 open reading frame 80
C14orf121	0.000105	90	0.26	Chromosome 14 open reading frame 121
C1orf151	0.000116	90	0.58	Chromosome 1 open reading frame 151
C1orf159	0.000228	70	0.30	Chromosome 1 open reading frame 159
C1orf198	0.000785	30	1.61	Chromosome 1 open reading frame 198
C1orf68	0.000348	50	0.47	Chromosome 1 open reading frame 68
C1QTNF3	0.000106	90	1.75	C1q and tumor necrosis factor related protein 3
C20orf32	0.000699	40	0.58	Chromosome 20 open reading frame 32
CACNA1B	0.000027	100	0.32	Calcium channel, voltage-dependent, N type, alpha 1B subunit
CACNG6	0.000154	80	0.40	Calcium channel, voltage-dependent, gamma subunit 6
CCDC135	0.000232	70	0.30	Coiled-coil domain containing 135
CCL28	0.000749	40	1.48	Chemokine (C-C motif) ligand 28
CDH19	0.000493	40	0.45	Cadherin 19, type 2
CDYL2	0.000987	20	0.49	Chromodomain protein, Y-like 2
CES2	0.000256	60	0.39	Carboxylesterase 2 (intestine, liver)
CNTFR	0.00071	40	0.45	Ciliary neurotrophic factor receptor
CPE	0.000651	40	1.42	Carboxypeptidase E
CRYBB1	0.000473	50	0.34	Crystallin, beta B1
DDB2	0.000937	40	0.64	Damage-specific DNA binding protein 2, 48kDa
FEZ1	0.000451	50	2.2	Fasciculation and elongation protein zeta 1 (zygin i)
FGFBP1	0.000525	50	0.73	Fibroblast growth factor binding protein 1
FGFR1OP2	0.000428	50	1.77	FGFR1 oncogene partner 2
FKBP7	0.000042	100	2.90	FK506 binding protein 7
GCM1	0.000638	40	0.41	Glial cells missing homolog 1 (drosophila)
GNAZ	0.000256	70	0.32	Guanine nucleotide binding protein (G protein), alpha z polypeptide
HIPK1	0.00044	70	0.20	Homeodomain interacting protein kinase 1
ITGB7	0.000023	100	0.39	Integrin, beta 7
JAK2	0.000811	60	0.41	Janus kinase 2 (a protein tyrosine kinase)
KDELR2	0.000566	40	1.73	KDEL (Lys-Asp-Glu-Leu) endoplasmic reticulum protein retention receptor 2
KIAA0141	0.000283	60	0.51	KIAA0141
KLF12	0.00045	50	2.71	Kruppel-like factor 12
KLHL7	0.000842	40	2.49	Kelch-like 7 (drosophila)
KRT10	0.000802	40	1.80	Keratin 10 (epidermolytic hyperkeratosis; keratosis palmaris et plantaris)
KYNU	0.000342	80	0.49	Kynureninase (L-kynurenine hydrolase)
LIN28	0.000089	100	2.12	Lin-28 homolog (C. elegans)
LRRC17	0.000691	40	1.51	Leucine-rich repeat containing 17
LRSAM1	0.000397	60	0.38	Leucine-rich repeat and sterile alpha motif containing 1
METTL4	0.000828	40	0.46	Methyltransferase like 4
MFAP2	0.000198	80	1.77	Microfibrillar-associated protein 2
MUTYH	0.000619	40	0.34	MutY homolog (E. coli)
MXD1	0.000057	100	0.40	MAX dimerization protein 1
NANOS1	0.000275	70	1.80	Nanos homolog 1 (drosophila)
NCR2	0.000425	80	0.35	Natural cytotoxicity triggering receptor 2
ODF4	0.000094	80	0.43	Outer dense fiber of sperm tails 4
OR10A3	0.000023	90	0.49	Olfactory receptor, family 10, subfamily A, member 3
OR2AG1	0.000435	60	0.41	Olfactory receptor, family 2, subfamily ag, member 1
OR4C15	0.000931	40	0.40	Olfactory receptor, family 4, subfamily c, member 15
OR51B5	0.00062	40	0.47	Olfactory receptor, family 51, subfamily B, member 5
OR5111	0.000042	100	0.63	Olfactory receptor, family 51, subfamily I, member 1
OR6F1	0.000866	30	0.40	Olfactory receptor, family 6, subfamily F, member 1
OR9G9	0.000512	40	0.45	Olfactory receptor, family 9, subfamily G, member 9
OSGEPL1	0.000443	50	2.05	O-sialoglycoprotein endopeptidase-like 1
OSM	0.000645	40	0.62	Oncostatin M
PKHD1	0.000882	20	0.32	Polycystic kidney and hepatic disease 1 (autosomal recessive)
PPAP2B	0.000695	40	1.39	Phosphatidic acid phosphatase type 2B
PPCDC	0.000021	100	0.34	Phosphopantothienoylcysteine decarboxylase
PRELP	0.00043	50	1.34	Proline/arginine-rich end leucine-rich repeat protein
PTCH2	0.0002	80	0.43	Patched homolog 2 (drosophila)
PTPRN2	0.000265	60	0.43	Protein tyrosine phosphatase, receptor type, N polypeptide 2
RIN1	0.000285	70	0.44	Ras and Rab interactor 1
RIT1	0.000282	70	1.91	Ras-like without CAAX 1

**Table 2.** Continued.

Gene Symbol	p-Value	%CV Support <sup>a</sup>	Hazard Ratio	Description
SCO2	0.000263	70	0.46	SCO cytochrome oxidase deficient homolog 2 (yeast)
SEPN1	0.000093	100	0.40	Selenoprotein N, 1
SIGLEC8	0.000838	20	0.48	Sialic acid binding Ig-like lectin 8
SMPD2	0.000049	90	0.47	Sphingomyelin phosphodiesterase 2, neutral membrane (neutral sphingomyelinase)
SPATA13	0.000631	50	0.46	Spermatogenesis associated 13
SPATA18	0.000139	80	0.38	Spermatogenesis associated 18 homolog (rat)
SYT11	0.000838	40	1.69	Synaptotagmin XI
TMEM150	0.000425	40	0.30	Transmembrane protein 150
TMEM45A	0.000288	70	1.49	Transmembrane protein 45A
TRO	0.000051	100	2.17	Trophinin
TRPV4	0.000999	10	0.53	Transient receptor potential cation channel, subfamily V, member 4
TUBB4	0.00071	30	0.43	Tubulin, beta 4
WDR7	0.000086	100	0.26	WD repeat domain 7
WNT16	0.000828	30	0.48	Wingless-type MMTV integration site family, member 16
ZBTB8	0.000324	80	2.26	Zinc finger and BTB domain containing 8
ZNF12	0.000588	30	2.05	Zinc finger protein 12
ZNF521	0.000281	70	1.50	Zinc finger protein 521
ZNF569	0.000197	80	2.49	Zinc finger protein 569

<sup>a</sup>%CV Support indicates the percentage of the cross-validation training sets in which the gene was selected. 100% means that the gene was selected in all of the cross-validated training sets.

doi:10.1371/journal.pmed.1000024.t002

### Gene Expression Profile Associated with Overall Survival

Eighty-six genes were found to correlate with overall survival by univariately fitting Cox proportional models at an alpha of 0.001. In Table 2 each gene is listed with its *p*-value, cross-validation support, hazard ratio (HR), and description. Univariate *p*-values, HR, and false discovery rates (FDRs) for all 15,909 genes are given in Table S2. The FDR associated with a row of the table is an estimate of the proportion of the genes with univariate *p*-values less than or equal to the one in that row that represent false positives [31]. Figure 1A shows the Kaplan-Meier survival curves for the cross-validated risk groups predicted to have above ( $n = 83$ ) or below ( $n = 74$ ) median risk of death due to ovarian cancer. Table S3 contains the necessary weights and final prediction rule to calculate the predictive index for a sample based on the expression signals of the identified 86 genes. As mentioned in the methods section the cross-validated risk group for each case was determined based on a predictor model that did not use that case in any way in its construction. The low-risk group had a median survival of 41 mo, whereas the high-risk group had a median survival of 19 mo ( $p = 0.0014$ , log-rank). The permutation test based on 1,000 permutations resulted in a *p*-value of 0.0015, indicating that the chance that such a log-rank static is based on overfitting is small. Table 3 shows the distribution of several prognostic factors as a function of risk assignment based on our 86-gene overall survival profile. Age, stage, grade, debulking status, and chemotherapy regimens showed no difference in distribution between the predicted low- and high-risk groups. In addition to our overall survival profile, only the amount of residual tumor after primary surgery ( $p = 0.0003$ ; HR = 2.34) showed a prognostic value for overall survival in univariate analysis. In multivariate analysis our overall survival profile ( $p = 0.008$ ; HR = 1.94; 95% confidence interval [CI] 1.19–3.16) and debulking status ( $p = 0.006$ ; HR =

2.44; 95% CI 1.30–4.60) both maintained independent prognostic significance (Table 4).

### QRT-PCR Validation of the Overall Survival Profile

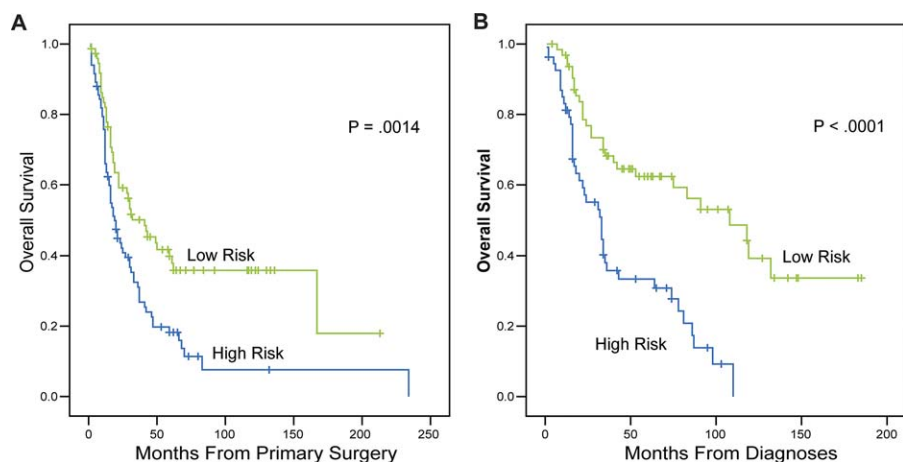
To validate the overall survival profile, we performed qRT-PCR for 31 total RNA samples that had been included in the microarray analysis. Four genes, i.e., *FGFBP1*, *FKBP7*, *TME-M45A*, and *CCL28*, that differ in percentage cross-validation support were arbitrarily selected from the 86-gene overall survival profile. Relative expression levels for each gene were correlated with the corresponding microarray signal intensities. A strong correlation between qRT-PCR and microarray signal intensities was observed for all four genes (Figure 2).

### Independent Validation of the Overall Survival Profile

Because of the different microarray platforms used, our predictor model could not be directly tested on the independent serous ovarian cancer dataset. Instead we identified 97 probes on the HU133A platform, targeting 57 out of the 86 unique genes from our overall survival profile. These probes were used to build a survival profile as described above. Figure 1B shows the Kaplan-Meier survival curves for the patients from the independent dataset predicted to have above or below median risk of death due to ovarian cancer. This low-risk group had a median survival of 108 mo, whereas the high-risk group had a median survival of 33 mo ( $p < 0.0001$ , log-rank). The permutation *p*-value of the log-rank test statistic between the two risk groups, based on 1,000 permutations, was  $p = 0.007$ .

### Pathways and Transcription Factors Associated with Overall Survival

As input for the survival gene set analysis, significance levels based on univariate Cox proportional hazards regression of survival time versus the log expression level for all 15,909 genes were used. KEGG pathways and transcription factors associated with overall survival in our dataset and that



**Figure 1.** Kaplan-Meier Survival Curves for the Patients Predicted to Have Above or Below Median Risk of Death Due to Ovarian Cancer (A) Present study, median survival of 19 mo versus 41 mo ( $p = 0.0014$ , log-rank), permutation  $p$ -value = 0.015. (B) Dressman et al. [9], median survival of 33 mo versus 108 mo ( $p < 0.0001$ , log-rank), permutation  $p$ -value = 0.007. doi:10.1371/journal.pmed.1000024.g001

of Dressman et al. [9] are shown in Tables 5 and 6, respectively. In our dataset 17/167 pathways and 13/111 transcription factors were associated with overall survival, of which 16 and 12, respectively, were confirmed in the independent dataset from Dressman et al. [9]. Table S4 shows univariate  $p$ -values and hazard ratios for genes that form part of the 17 pathways associated with overall survival in our dataset.

### Oncogenic Pathway Activation

Figure 3 shows a heatmap of the predicted activation status for the five oncogenic pathways in our 157 ovarian tumor samples. Red indicates a high probability of activation and green indicates a low probability of activation. None of the five oncogenic pathways showed a significant log-rank statistic for the Kaplan-Meier survival curves between the

group of ovarian tumor samples with an activation probability  $p < 0.5$  and the group with an activation probability  $p > 0.5$ . The five Kaplan-Meier curves and the associated log-rank  $p$ -values are shown in Figure S3. After clustering the samples on their activation probabilities for the five oncogenic pathways combined, the top two clusters showed no significant difference between their Kaplan-Meier survival curves (Figure S4).

### Discussion

In this study on tumors of a large series of well-documented advanced-stage serous ovarian cancer patients we identified a gene expression profile that reflects patients' overall survival. Our overall survival profile maintained independent prog-

**Table 3.** Association between the Overall Survival Profile and Clinicopathologic Characteristics

Characteristic	Subcategory	Low Risk ( $n = 74$ )		High Risk ( $n = 83$ )		$p$ -Value
		$n$ or Value	%	$n$ or Value	%	
<b>Age</b>	Median, years	60	—	60	—	—
<b>Survival</b>	Median, months	41	—	19	—	—
<b>Stage (FIGO)</b>	IIIA	2	2.7	0	0	0.128
	IIIB	1	1.4	5	6	—
	IIIC	62	83.8	63	75.9	—
	IV	9	12.2	15	18.1	—
<b>Grade</b>	Well differentiated	9	12.2	5	6	0.104
	Moderately differentiated	16	21.6	29	34.9	—
	Poorly differentiated	43	58.1	39	47	—
	Undifferentiated	0	0	3	3.6	—
	Unknown	6	8.1	7	8.4	—
<b>Debulking status</b>	Complete debulking	12	16.2	10	12.1	0.237
	< 2 cm	10	13.5	11	13.3	—
	$\geq 2$ cm	48	64.9	52	62.7	—
	Positive, size unknown	1	1.4	8	9.6	—
	Unknown	3	4.1	2	2.4	—
<b>Chemotherapy</b>	Non paclitaxel-based	44	59.5	58	69.9	0.115
	Paclitaxel-based	30	40.5	25	30.1	—

$p$ -Values for stage, grade, debulking status, and chemotherapy were derived from the Pearson Chi-square test.  $p$ -Value for age was derived from the  $t$ -test. FIGO, International Federation of Gynecology and Obstetrics. doi:10.1371/journal.pmed.1000024.t003

**Table 4.** Prognostic Value of the Overall Survival Profile Adjusted for Debulking Status, Stage, Grade, Age, and Ascites by Cox Proportional Hazards Regression

Prognostic Factor	Multivariate <i>p</i> -Value	HR	95% CI
OSP	0.008	1.940	1.190–3.163
Stage (III vs. IV)	0.144	1.540	0.863–2.746
Debulking status (residual tumor < vs > 2 cm)	0.006	2.443	1.296–4.604
Grade (I vs II/III)	0.545	1.160	0.717–1.878
Ascites (+ vs. -)	0.365	1.262	0.763–2.086
Age <sup>a</sup>	0.287	1.011	0.991–1.030

<sup>a</sup>Age was analyzed as a continuous variable.

OSP, overall survival profile.

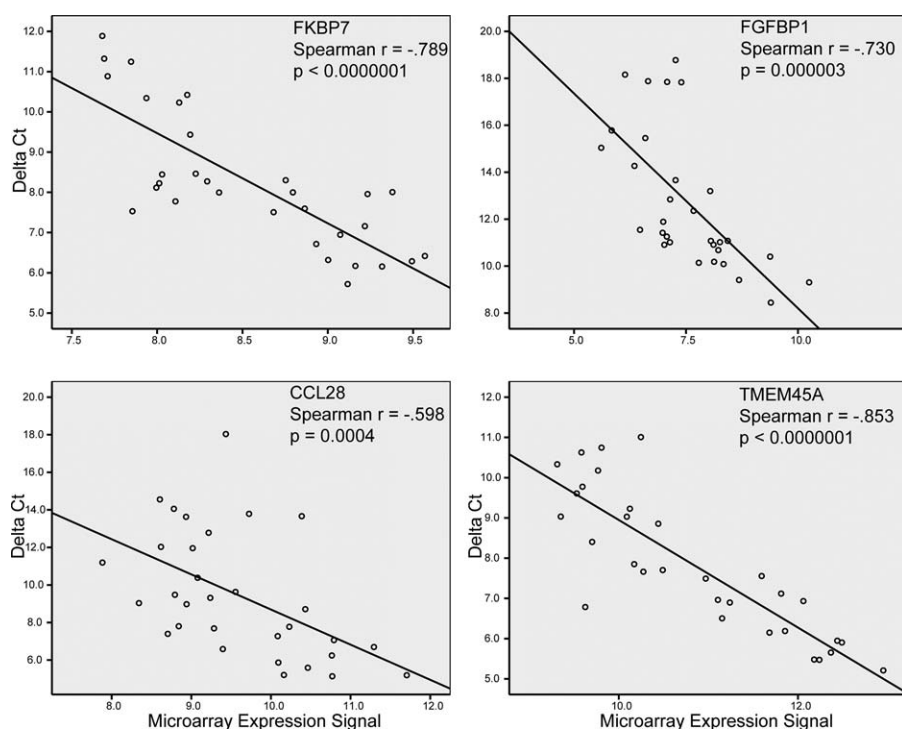
doi:10.1371/journal.pmed.1000024.t004

nostic significance in multivariate analysis. Moreover, expression of the genes that composed our overall survival profile also held their prognostic value in an independent dataset processed at a different institution using a different microarray platform. Finally, in addition to individual genes, we were also able to reproducibly identify and validate KEGG pathways and TRED transcription factors associated with overall survival.

Limited overlap with respect to individual genes, as observed in comparable studies in other tumor types, was also found between our overall survival profile and those reported in three previous ovarian cancer microarray studies [4,7,32].

Nonreproducibility of prognostic profiles between different microarray studies in the same tumor type can be

attributed to a variety of methodological issues [33,34]. Our study specifically pays attention to methodological principles such as randomization and replication. Thus, confounding effects are avoided and unbiased estimation of differential expression levels is provided. The three studies mentioned above did not include a replication of the experiment [4,7,32]. In contrast to these studies, by using supervised PCA to build prognostic profiles, we could consider survival a continuous parameter, and patients were thus not forced into subgroups that might not be biologically meaningful. Categorizing patients a priori into a “low risk” and “high risk” subgroup based on survival times might cause any future predictions based on this model to be suspect when underlying, unidentified, biologically different subgroups have considerable overlap in survival times.

**Figure 2.** Scatter Plots Showing the Microarray Expression Signal Versus the  $\Delta$ Ct Obtained by qRT-PCR for Four Individual Genes

Genes are *FGFBP1*, *FKBP7*, *TMEM45A*, and *CCL28* from our overall survival profile.  $\Delta$ Ct of the gene is obtained by subtracting the mean Ct value of *GAPDH* from the mean Ct value of the gene. Both axes are on  $\log_2$  scale.

doi:10.1371/journal.pmed.1000024.g002



**Table 5.** KEGG Pathways with More Genes Correlated with Overall Survival Than Expected by Chance as Identified in the Present Study and in the Dressman et al. [9] Dataset

KEGG Pathway	Pathway Description	Present Study	Dressman et al. [9]
hsa00190	Oxidative phosphorylation	X	X
hsa00230	Purine metabolism	X	X
hsa01430	Cell communication	X	X
hsa04020	Calcium signaling pathway	X	X
hsa04060	Cytokine-cytokine receptor interaction	X	X
hsa04110	Cell cycle	X	X
hsa04310	Wnt signaling pathway	X	X
hsa04360	Axon guidance	X	X
hsa04510	Focal adhesion	X	X
hsa04514	Cell adhesion molecules (CAMs)	X	X
hsa04530	Tight junction	X	X
hsa04630	Jak-STAT signaling pathway	X	X
hsa04650	Natural killer cell mediated cytotoxicity	X	X
hsa04670	Leukocyte transendothelial migration	X	X
hsa04810	Regulation of actin cytoskeleton	X	X
hsa04910	Insulin signaling pathway	X	X
hsa04020	MAPK signaling pathway	X	

Pathways that are significant at the nominal 0.005 level of the LS permutation test or KS permutation test are listed. The following pathways are associated with survival only in the study of Dressman et al. [9]: Colorectal cancer, Pyrimidine metabolism, Tryptophan metabolism, Glycerophospholipid metabolism, Glycan structures – biosynthesis 1, Ribosome, PPAR signaling pathway, Phosphatidylinositol signaling system, Neuroactive ligand-receptor interaction, Apoptosis, TGF-beta signaling pathway, VEGF signaling pathway, ECM-receptor interaction, Adherens junction, Gap junction, Antigen processing and presentation, Toll-like receptor signaling pathway, Hematopoietic cell lineage, B cell receptor signaling pathway, Long-term potentiation, Long-term depression, GnRH signaling pathway, Adipocytokine signaling pathway, Epithelial cell signaling in *Helicobacter pylori* infection, One carbon pool by folate, Methane metabolism, Glycosphingolipid biosynthesis – ganglioseries, Glycosphingolipid biosynthesis – globoseries, Hedgehog signaling pathway, Glycan structures – biosynthesis 2, Neurodegenerative disorders, Regulation of autophagy.  
doi:10.1371/journal.pmed.1000024.t005

Our overall survival profile contains several interesting genes (Table 2) that offer potential insight into mechanisms associated with tumor behavior. The overall validity of our approach is confirmed by the observation that for some of the genes in our profile, earlier studies that utilized non-array-based methodologies already indicated their relevance in ovarian cancer. For example, high expression of the proapoptotic *BAX* gene was associated with improved prognosis in our study. Previously, a similar relation between *BAX* expression and response to chemotherapy and overall survival in ovarian cancer was reported by others [8,35–37]. Likewise, in our study, high expression of Ras inhibitor 1 (*RINI*) and low expression of Ras-like without CAAX1 (*RITI*) were associated with better overall survival, which is in agreement with previous work by others showing that activated Ras contributes to the maintenance and growth of ovarian carcinomas [38]. In addition to these already known relevant genes in ovarian cancer our study reveals also multiple new genes with a possible impact on tumor behavior in ovarian cancer. For example *OSM*, *JAK2*, and *CNTFR* are components of the Jak/STAT signaling pathway, which can stimulate cell proliferation, differentiation, cell migration, and apoptosis [39]. *OSM* has individually been identified as a potent suppressor of tumor cell proliferation and inducer of differentiation in multiple tissues [40]. *FGFBP1* and *FGFR1* interact with fibroblast growth factors *FGF1* and *FGF2*, and it

**Table 6.** Transcription Factor Gene Sets with More Genes Correlated with Overall Survival Than Expected by Chance as Identified in the Present Study and in the Dressman et al. [9] Dataset

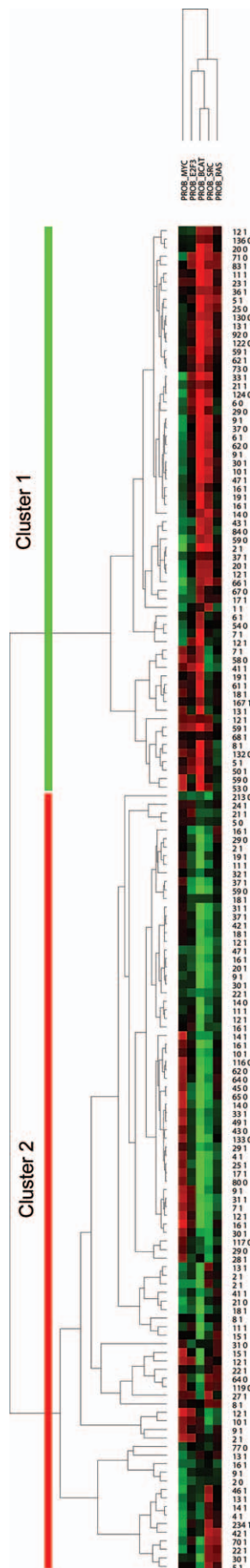
Factor Name	Accession Number	Present Study	Dressman et al. [9]
C/EBPalpha	T00105	X	X
CREB	T00163	X	X
E2F-1	T01542	X	X
E2F-4	T01546	X	X
c-Ets-1	T00112	X	X
AP-1	T00029	X	X
c-Myb	T00137	X	X
CTF-1	T00176	X	X
NF-kappaB(-like)	T00591	X	X
Sp1	T00759	X	X
AP-2alphaA	T00035	X	X
p53	T00671	X	X
E2F-2	T01544	X	

NOTE. Transcription factor gene sets that are significant at the nominal 0.005 level of the LS permutation test or KS permutation. The following transcription factor gene sets are associated with survival only in the study of Dressman et al. [9], *ATF-1*, *Egr-1*, *ER-alpha*, *PEA3*, *HIF-1*, *POU2F1*, *PPAR-gamma1*, *RAR-alpha1*, *RAR-beta*, *RelA*, *Sp3*, *PU-1*, *USF1*, *USF2*, *NF-IL6-2*.  
doi:10.1371/journal.pmed.1000024.t006

has been suggested that the fibroblast growth factors could serve as the angiogenic switch in human cancer [41–43]. Apart from having prognostic impact our analysis also sheds light on previous unknown possible “druggable” targets in ovarian cancer; *FKBP7*, with the highest hazard ratio for individual genes in our study, appears to be especially of interest because FKBP can be targeted with mTOR inhibitors [44].

Although individual genes such as those described above may prove to be relevant for tumor behavior, it is often not known in ovarian and other cancers whether large fold-changes in individual genes will have more biological relevance than will smaller but coordinated fold-changes in a set of genes along a single pathway. Analysis of our microarray data by integration of genes into functional gene sets according to well-known biological pathways and transcription factors enabled us to consider all available genomic information rather than only genes passing a certain significance threshold, thus providing extra clues to which signaling pathways and transcription factors contribute to the clinical outcome of ovarian cancer. Bonome et al. [32] recently also identified possible signaling events (pathways). However, by using classical over-representation analysis of functional gene sets within only a small subset of genes (57 probes) associated with overall survival, the authors disregarded most of the genomic information available [32].

Our pathway analysis, which to our knowledge has not been applied to ovarian cancer array datasets previously, revealed 17 pathways to be related to survival, of which 16 were validated in the independent dataset. As previously mentioned, there is usually only limited overlap with respect to individual genes between the prognostic profiles previously published in (ovarian) cancer [45]. In contrast, integrating genes in functional gene sets according to pathways and



**Figure 3.** Heatmap Showing Predicted Probabilities of Pathway Activation for the Five Oncogenic Pathways

Pathways are c-Myc, H-Ras, c-Src, E2F3, and  $\beta$ -catenin in our 157 ovarian tumor samples. Red indicates a high probability of activation and green indicates a low probability of activation. The probabilities of pathway activation were clustered according to the uncentered correlation measure. On the right of the figure the follow-up in months is depicted followed by the censoring status for each of the 157 samples. doi:10.1371/journal.pmed.1000024.g003

transcription factors in this study resulted in considerable overlap between our dataset and the independent dataset with respect to prognostic impact. Our results therefore indicate that assessment of prognostic profiles is more robust by determination of coordinated expression of several signaling pathways than of expression of individual genes.

Thus in the present study, cell cycle, Wnt, Jak-STAT, and MAPK pathways, playing a role in apoptosis, proliferation, differentiation, and/or cell cycle, were identified as having a role in ovarian cancer; consistent with these results, aberrant signaling of each of these pathways has been proposed as contributing to ovarian carcinogenesis [46–50], again indicating the strength of our approach. Novel therapeutic options are currently being explored that act on several signaling pathways that we found to be associated with overall survival in ovarian cancer. For example, Basica et al. recently described activation of Wnt signaling in ovarian and breast cancer cell lines and showed that Wnt antagonists dramatically altered the biological behavior of these cells [51]. A blocking antibody against FZD10, a cell membrane receptor for Wnt, was shown to have strong antitumor effect in xenografted tumors overexpressing FZD10 [52,53]. As in our study, a dysregulated Wnt pathway and, more specifically, overexpression of FZD10 and FZD7 (another member of the Wnt cell-surface receptor family) were related to worse prognosis, so this FZD10 blocking antibody may have clinical potential by inhibiting the autocrine Wnt signalling pathway in ovarian cancer.

Our transcription factor analysis also implicated several transcription factors (Table 5) in ovarian cancer. With different methodologies A2P-2alpha and c-Ets-1 have previously been associated with poor prognosis in ovarian cancer [54–56]. Similarly, E2F transcription factors, members of the C/EBP family, and CREB were demonstrated to play an important role in ovarian carcinogenesis [57–60]. With the exception of p53, most transcription factors are presently difficult to target. Our transcription factor analysis demonstrated a positive prognostic impact for p53 as an “activated” transcription factor. In tumor cell lines activation of wild-type p53 can be induced by the small molecule nutlin-3, which antagonizes the function of the natural inhibitor of wild-type p53 MDM2, resulting in enhanced apoptosis or cell cycle arrest [61,62]. In combination, these observations tempt one to speculate on a possible role for nutlin-3 in overcoming resistance to chemotherapy, especially in those ovarian cancers with a less activated p53 [61,63].

A limitation of functional gene set enrichment analysis as performed in our study, however, is its inability to assess the activation status of identified pathways in an individual tumor sample. This gap is potentially filled by the strategy described by Dressman et al. [9] and Bild et al. [28] (see also Materials and Methods: Oncogenic pathway activation anal-

ysis). In this study we assessed the activation status of five oncogenic signaling pathways in 157 ovarian tumor samples based on the activation observed in a mammalian cell line following transfection of adenovirus expressing human c-Myc, activated H-Ras, human c-Src, human E2F3, or  $\beta$ -catenin. Bild et al. showed in a series of 153 samples that activated E2F3,  $\beta$ -catenin, and c-Src pathways were associated with poor overall survival in ovarian cancer [28]. None of these five oncogenic pathways showed a significant association (as individual pathways and/or in combination) with overall survival in our dataset (see Figures S3 and S4). Our results therefore indicate that analysis of pathway activation status until now is not very robust and cannot be easily exchanged between different studies, as was recently also described by others [64].

In this study the prognostic impact of 57 genes from our profile was validated within the independent dataset from Dressman et al. [9], providing stronger evidence than before that these genes are important in the biological behavior of ovarian tumors. Platform differences did not allow one-to-one exact validation of the underlying predictive algorithm. Therefore, the clinical usefulness of our overall survival predictor needs further validation. With regard to the reproducibility issues between different microarray platforms, it seems likely that in the future an array-based prognostic tool will be based on a single platform. So, our study might be considered a phase II study in which we constructed a genetic profile associated with overall survival within the whole group of 157 patients according to statistical principles such as cross-validation and permutation testing [65]. As described above, such a study provides valuable clues about the mechanisms underlying tumor behavior and clues with respect to potential drug development targets (genes, pathways, etc). To further evaluate the prognostic impact of our profile for individual patients, prospective studies need to be performed. Another important issue that needs to be addressed in such studies is the impact of intratumor heterogeneity on reproducibility. Using a combination of microsatellite analysis and SNP analysis Khalique et al. recently showed that intratumor heterogeneity is a common feature within epithelial ovarian cancer [66].

In conclusion, our study provides new, validated insights into molecular changes in genes, pathways, and transcription factors that are relevant for ovarian cancer behavior and that should therefore be exploited in the search for new treatment strategies towards patient-tailored therapy. In the future, pathway activation analysis in individual tumors may guide the choice of targeting drugs in ovarian cancer patients [67,68], but its methodology needs to become more robust before clinical relevance can be envisioned.

## Supporting Information

**Figure S1.** Diagram Showing the Randomization Design

Found at doi:10.1371/journal.pmed.1000024.sg001 (497 KB TIF).

**Figure S2.** A Graphical Representation of the Survival Prediction Method

Found at doi:10.1371/journal.pmed.1000024.sg002 (2.6 MB TIF).

**Figure S3.** Kaplan-Meier Survival Curves for the Five Oncogenic Pathways between the Group of Ovarian Tumor Samples with an Activation Probability  $p < 0.5$  and the Group with an Activation Probability  $p > 0.5$

Found at doi:10.1371/journal.pmed.1000024.sg003 (1.5 MB TIF).

**Figure S4.** Kaplan-Meier Survival Curves of the Top Two Clusters after Clustering the Samples on their Activation Probabilities for the Five Oncogenic Pathways Combined

Found at doi:10.1371/journal.pmed.1000024.sg004 (1 MB TIF).

**Table S1.** Available Clinicopathologic Characteristics of the 118 Patients as Reported by Dressman et al. [9]

Found at doi:10.1371/journal.pmed.1000024.st001 (35 KB DOC).

**Table S2.** Overall Survival-Related Univariate  $p$ -Values, HR, and FDR for all 15,909 Genes

Found at doi:10.1371/journal.pmed.1000024.st002 (1.5 MB XLS).

**Table S3.** Weights and Final Prediction Rule to Calculate the Predictive Index for a Sample Based on the Expression Signals of the Identified 86 Genes

Found at doi:10.1371/journal.pmed.1000024.st003 (41 KB XLS).

**Table S4.** Univariate  $p$ -Values and Hazard Ratios for Genes that Form Part of the 17 Pathways Associated with Overall Survival in Our Dataset

Found at doi:10.1371/journal.pmed.1000024.st004 (266 KB XLS).

## Acknowledgments

This paper is dedicated to the memory of Frans Gerbens who, sadly, died before publication of our work.

**Author contributions.** Conception and design: SdJ, RMWH, GJtM, EGEV, and AGJvdZ. Provision of study materials or patients: HH, RMWH, EGEV, and AGJvdZ. Collection and assembly of data: APGC, FG, GJM, and HGK. Data analysis and interpretation: APGC, RSNF, SdJ, FG, RMWH, GJtM, EGEV, and AGJvdZ. Manuscript writing: APGC, RSNF, SdJ, EGEV, and AGJvdZ. Final approval of manuscript: APGC, RSNF, SdJ, FG, GJM, HGK, HH, RMWH, GJtM, EGEV, AGJvdZ. AGJvdZ has supplied the information regarding his contribution to the manuscript and his competing interests, which is correct to the best of his knowledge.

## References

- Jemal A, Siegel R, Ward E, Murray T, Xu J, et al. (2006) Cancer statistics, 2006. *CA Cancer J Clin* 56: 106–130.
- Du Bois A, Quinn M, Thigpen T, Vermorken J, Avall-Lundqvist E, et al. (2005) 2004 Consensus Statements on the Management of Ovarian Cancer: Final Document of the 3rd International Gynecologic Cancer Intergroup Ovarian Cancer Consensus Conference (GCIG OCC 2004). *Ann Oncol* 16: Viii7–Viii12.
- Cannistra SA (2004) Cancer of the ovary. *N Engl J Med* 351: 2519–2529.
- Berchuck A, Iversen ES, Lancaster JM, Pittman J, Luo J, et al. (2005) Patterns of gene expression that characterize long-term survival in advanced stage serous ovarian cancers. *Clin Cancer Res* 11: 3686–3696.
- Hartmann LC, Lu KH, Linette GP, Cliby WA, Kalli KR, et al. (2005) Gene expression profiles predict early relapse in ovarian cancer after platinum-paclitaxel chemotherapy. *Clin Cancer Res* 11: 2149–2155.
- Helleman J, Jansen MP, Span PN, Van Staveren IL, Massuger LF, et al. (2006) Molecular profiling of platinum resistant ovarian cancer. *Int J Cancer* 118: 1963–1971.
- Spentzos D, Levine DA, Ramoni MF, Joseph M, Gu X, et al. (2004) A gene expression signature with independent prognostic significance in epithelial ovarian cancer. *J Clin Oncol* 25: 517–525.
- Spentzos D, Levine DA, Kolia S, Otu H, Boyd J, et al. (2005) Unique gene expression profile based on pathologic response in epithelial ovarian cancer. *J Clin Oncol* 23: 7911–7918.
- Dressman HK, Berchuck A, Chan G, Zhai J, Bild A, et al. (2007) An integrated genomic-based approach to individualized treatment of patients with advanced-stage ovarian cancer. *J Clin Oncol* 25: 517–525.
- Cancer Committee of the International Federation of Gynecology and Obstetrics (1986) Staging announcement: FIGO Cancer Committee. *Gynecol Oncol* 25: 383–385.
- Engelen MJ, Kos HE, Willems PH, Aalders JG, De Vries EG, et al. (2006) Surgery by consultant gynecologic oncologists improves survival in patients with ovarian carcinoma. *Cancer* 106: 589–598.
- Kapojos JJ, Poelstra K, Borghuis T, Van Den Berg A, Baelde HJ, et al. (2003) Induction of glomerular alkaline phosphatase after challenge with lipopolysaccharide. *Int J Exp Pathol* 84: 135–144.
- Crijns AP, Gerbens F, Plantinga AE, Meersma GJ, de Jong S, et al. (2006) A biological question and a balanced (orthogonal) design: the ingredients to efficiently analyze two-color microarrays with Confirmatory Factor Analysis. *BMC Genomics* 7: 232.
- T Hoen PA, Turk R, Boer JM, Sterrenburg E, De Menezes RX, et al. (2004)

- Intensity-based analysis of two-colour microarrays enables efficient and flexible hybridization designs. *Nucleic Acids Res* 32: E41.
15. Churchill GA (2002) Fundamentals of experimental design for cDNA microarrays. *Nat Genet* 32: 490–495.
  16. Hsu JC, Chang J, Wang T, Steingrimsson E, Magnusson MK, et al. (2006) Statistically designing microarrays and microarray experiments to enhance sensitivity and specificity. *Brief Bioinform* 8: 22–31.
  17. Kerr MK (2003) Design considerations for efficient and effective microarray studies. *Biometrics* 59: 822–828.
  18. De Jonge HJ, Fehrmann RS, De Bont ES, Hofstra RM, Gerbens F, et al. (2007) Evidence based selection of housekeeping genes. *PLoS One* 2: e898. doi:10.1371/journal.pone.0000898
  19. Bolstad BM, Irizarry RA, Astrand M, Speed TP (2003) A comparison of normalization methods for high density oligonucleotide array data based on variance and bias. *Bioinformatics* 19: 185–193.
  20. Alter O, Brown PO, Botstein D (2000) Singular value decomposition for genome-wide expression data processing and modeling. *Proc Natl Acad Sci U S A* 97: 10101–10106.
  21. Crijs AP, Gerbens F, Plantinga AE, Meersma GJ, De Jong S, et al. (2006) A biological question and a balanced (orthogonal) design: the ingredients to efficiently analyze two-color microarrays with confirmatory factor analysis. *BMC Genomics* 7: 232.
  22. Sherlock G (2001) Analysis of large-scale gene expression data. *Brief Bioinform* 2: 350–362.
  23. Bair E, Tibshirani R (2004) Semi-supervised methods to predict patient survival from gene expression data. *Plos Biol* 2: e108. doi:10.1371/journal.pbio.0020108
  24. Radmacher MD, McShane LM, Simon R (2002) A paradigm for class prediction using gene expression profiles. *J Comput Biol* 9: 505–511.
  25. Pavlidis P, Qin J, Arango V, Mann JJ, Sibille E (2004) Using the gene ontology for microarray data mining: a comparison of methods and application to age effects in human prefrontal cortex. *Neurochem Res* 29: 1213–1222.
  26. Zhao F, Xuan Z, Liu L, Zhang MQ (2005) Tred: A transcriptional regulatory element database and a platform for in silico gene regulation studies. *Nucleic Acids Res* 33: D103–D107.
  27. Kanehisa M, Goto S, Hattori M, Oki-Kinoshita KF, Itoh M, et al. (2006) From genomics to chemical genomics: new developments in Kegg. *Nucleic Acids Res* 34: D354–D357.
  28. Bild AH, Yao G, Chang JT, Wang Q, Potti A, et al. (2006) Oncogenic pathway signatures in human cancers as a guide to targeted therapies. *Nature* 439: 353–357.
  29. Marshall E (2004) Getting the noise out of gene arrays. *Science* 306: 630–631.
  30. Lin YH, Friederichs J, Black MA, Mages J, Rosenberg R, et al. (2007) Multiple gene expression classifiers from different array platforms predict poor prognosis of colorectal cancer. *Clin Cancer Res* 13: 498–507.
  31. Benjamini Y, Hochberg Y (1995) Controlling the false discovery rate - a practical and powerful approach to multiple testing. *J R Stat Soc Ser B - Methodol* 57: 289–300.
  32. Bonome T, Levine DA, Shih J, Randonovich M, Pise-Masison CA, et al. (2008) A gene signature predicting for survival in suboptimally debulked patients with ovarian cancer. *Cancer Res* 68: 5478–5486.
  33. Draghici S, Khatri P, Eklund AC, Szallasi Z (2006) Reliability and reproducibility issues in DNA microarray measurements. *Trends Genet* 22: 101–109.
  34. Radmacher MD, Mcshane LM, Simon R (2002) A paradigm for class prediction using gene expression profiles. *J Comput Biol* 9: 505–511.
  35. Tai YT, Lee S, Niloff E, Weisman C, Strobel T, et al. (1998) Bax protein expression and clinical outcome in epithelial ovarian cancer. *J Clin Oncol* 16: 2583–2590.
  36. Schuyer M, Van Der Burg ME, Henzen-Logmans SC, Fieret JH, Klijn JG, et al. (2001) Reduced expression of Bax is associated with poor prognosis in patients with epithelial ovarian cancer: a multifactorial analysis of Tp53, P21, Bax and Bcl-2. *Br J Cancer* 85: 1359–1367.
  37. Strobel T, Swanson L, Korsmeyer S, Cannistra SA (1996) Bax enhances paclitaxel-induced apoptosis through a p53-independent pathway. *Proc Natl Acad Sci U S A* 93: 14094–14099.
  38. Beiner ME, Niv H, Haklai R, Elad-Sfadia G, Kloog Y, et al. (2006) Ras antagonist inhibits growth and chemosensitizes human epithelial ovarian cancer cells. *Int J Gynecol Cancer* 16: 200–206.
  39. Rawlings JS, Rosler KM, Harrison DA (2004) The Jak/Stat signaling pathway. *J Cell Sci* 117: 1281–1283.
  40. Underhill-Day N, Heath JK (2006) Oncostatin M (Osm) cytoskeleton of breast tumor cells: characterization of an osm receptor beta-specific kernel. *Cancer Res* 66: 10891–10901.
  41. Czubayko F, Liaudet-Coopman ED, Aigner A, Tuveson AT, Berchem GJ, et al. (1997) A secreted Fgf-binding protein can serve as the angiogenic switch in human cancer. *Nat Med* 3: 1137–1140.
  42. Wu DQ, Kan MK, Sato GH, Okamoto T, Sato JD (1991) Characterization and molecular cloning of a putative binding protein for heparin-binding growth factors. *J Biol Chem* 266: 16778–16785.
  43. Grand EK, Grand FH, Chase AJ, Ross FM, Corcoran MM, et al. (2004) Identification of a novel gene, Fgfr1op2, fused to Fgfr1 in 8p11 myeloproliferative syndrome. *Genes Chromosomes Cancer* 40: 78–83.
  44. Nakamura T, Yabe D, Kanazawa N, Tashiro K, Sasayama S, et al. (1998) Molecular cloning, characterization, and chromosomal localization of Fkbp23, a novel Fk506-binding protein with Ca<sup>2+</sup>-binding ability. *Genomics* 54: 89–98.
  45. Fehrmann RS, Li XY, Van Der Zee AG, De Jong S, TE Meerman GJ, et al. (2007) Profiling studies in ovarian cancer: a review. *Oncologist* 12: 960–966.
  46. Agarwal R, Lynch M, Kaye SB (2006) Novel therapeutic agents in ovarian cancer. *Eur J Surg Oncol* 32: 875–886.
  47. Eisenhauer EA (2006) New targets and non-cytotoxics in ovarian cancer. *Ann Oncol* 17: X247–X250.
  48. Crijs AP, Duiker EW, De Jong S, Willemse PH, Van Der Zee AG, et al. (2006) Molecular prognostic markers in ovarian cancer: toward patient-tailored therapy. *Int J Gynecol Cancer* 16: 152–165.
  49. D'Andrilli G, Kumar C, Scambia G, Giordano A (2004) Cell cycle genes in ovarian cancer: steps toward earlier diagnosis and novel therapies. *Clin Cancer Res* 10: 8132–8141.
  50. Morin PJ (1999) Beta-catenin signaling and cancer. *Bioessays* 21: 1021–1030.
  51. Bafico A, Liu G, Goldin L, Harris V, Aaronson SA (2004) An autocrine mechanism for constitutive WNT pathway activation in human cancer cells. *Cancer Cell* 6: 497–506.
  52. Fukukawa C, Hanaoka H, Nagayama S, Tsunoda T, Toguchida J, et al. (2008) Radioimmunotherapy of human synovial sarcoma using a monoclonal antibody against Fzd10. *Cancer Sci* 99: 432–440.
  53. Nagayama S, Fukukawa C, Katagiri T, Okamoto T, Aoyama T, et al. (2005) Therapeutic potential of antibodies against Fzd 10, a cell-surface protein, for synovial sarcomas. *Oncogene* 24: 6201–6212.
  54. Anttila MA, Kellokoski JK, Moisio KI, Mitchell PJ, Saarikoski S, et al. (2000) Expression of transcription factor Ap-2alpha predicts survival in epithelial ovarian cancer. *Br J Cancer* 82: 1974–1983.
  55. Takai N, Miyazaki T, Nishida M, Nasu K, Miyakawa I (2002) C-ETS1 is a promising marker in epithelial ovarian cancer. *Int J Mol Med* 9: 287–292.
  56. Wilson LA, Yamamoto H, Singh G (2004) Role of the transcription factor ETS-1 in cisplatin resistance. *Mol Cancer Ther* 3: 823–832.
  57. Gubbay O, Rae MT, Mcneilly AS, Donadeu FX, Zeleznik AJ, et al. (2006) cAMP response element-binding (CREB) signalling and ovarian surface epithelial cell survival. *J Endocrinol* 191: 275–285.
  58. Reimer D, Sadr S, Wiedemair A, Goebel G, Concin N, et al. (2006) Expression of the E2f family of transcription factors and its clinical relevance in ovarian cancer. *Ann N Y Acad Sci* 1091: 270–281.
  59. Reimer D, Sadr S, Wiedemair A, Stadlmann S, Concin N, et al. (2007) Clinical relevance of E2f family members in ovarian cancer—An evaluation in a training set of 77 patients. *Clin Cancer Res* 13: 144–151.
  60. Sundfeldt K, Ivarsson K, Carlsson M, Enerback S, Janson PO, et al. (1999) The expression of CCAAT/Enhancer Binding Protein (C/EBP) in the human ovary in vivo: specific increase in C/EBPbeta during epithelial tumour progression. *Br J Cancer* 79: 1240–1248.
  61. Coll-Mulet L, Iglesias-Serret D, Santidrian AF, Cosialls AM, De Frias M, et al. (2006) MDM2 antagonists activate p53 and synergize with genotoxic drugs in b-cell chronic lymphocytic leukemia cells. *Blood* 107: 4109–4114.
  62. Tovar C, Rosinski J, Filipovic Z, Higgins B, Kolinsky K, et al. (2006) Small-molecule MDM2 antagonists reveal aberrant p53 signaling in cancer: implications for therapy. *Proc Natl Acad Sci U S A* 103: 1888–1893.
  63. Ambrosini G, Sambol EB, Carvajal D, Vassilev LT, Singer S, et al. (2007) Mouse double minute antagonist nutlin-3a enhances chemotherapy-induced apoptosis in cancer cells with mutant p53 by activating e2f1. *Oncogene* 26: 3473–3481.
  64. Baggerly KA, Coombes KR, Neeley ES (2008) Run batch effects potentially compromise the usefulness of genomic signatures for ovarian cancer. *J Clin Oncol* 26: 1186–1187.
  65. Simon R (2005) Roadmap for developing and validating therapeutically relevant genomic classifiers. *J Clin Oncol* 23: 7332–7341.
  66. Khalique L, Ayhan A, Me Weale, Jacobs IJ, Ramus SJ, et al. (2007) Genetic intra-tumour heterogeneity in epithelial ovarian cancer and its implications for molecular diagnosis of tumours. *J Pathol* 211: 286–295.
  67. Potti A, Dressman HK, Bild A, Riedel RF, Chan G, et al. (2006) Genomic signatures to guide the use of chemotherapeutics. *Nat Med* 12: 1294–1300.
  68. Minna JD, Girard L, Xie Y (2007) Tumor mRNA expression profiles predict responses to chemotherapy. *J Clin Oncol* 25: 4329–4336.

## Editors' Summary

**Background.** Ovarian cancer kills more than 100,000 women every year and is one of the most frequent causes of cancer death in women in Western countries. Most ovarian cancers develop when an epithelial cell in one of the ovaries (two small organs in the pelvis that produce eggs) acquires genetic changes that allow it to grow uncontrollably and to spread around the body (metastasize). In its early stages, ovarian cancer is confined to the ovaries and can often be treated successfully by surgery alone. Unfortunately, early ovarian cancer rarely has symptoms so a third of women with ovarian cancer have advanced disease when they first visit their doctor with symptoms that include vague abdominal pains and mild digestive disturbances. That is, cancer cells have spread into their abdominal cavity and metastasized to other parts of the body (so-called stage III and IV disease). The outlook for women diagnosed with stage III and IV disease, which are treated with a combination of surgery and chemotherapy, is very poor. Only 30% of women with stage III, and 5% with stage IV, are still alive five years after their cancer is diagnosed.

**Why Was This Study Done?** If the cellular pathways that determine the biological behavior of ovarian cancer could be identified, it might be possible to develop more effective treatments for women with stage III and IV disease. One way to identify these pathways is to use gene expression profiling (a technique that catalogs all the genes expressed by a cell) to compare gene expression patterns in the ovarian cancers of women who survive for different lengths of time. Genes with different expression levels in tumors with different outcomes could be targets for new treatments. For example, it might be worth developing inhibitors of proteins whose expression is greatest in tumors with short survival times. In this study, the researchers develop an expression profile that is associated with overall survival in advanced-stage serous ovarian cancer (more than half of ovarian cancers originate in serous cells, epithelial cells that secrete a watery fluid). The researchers also assess the association of various cellular pathways and transcription factors (proteins that control the expression of other proteins) with survival in this type of ovarian carcinoma.

**What Did the Researchers Do and Find?** The researchers analyzed the gene expression profiles of tumor samples taken from 157 patients with advanced stage serous ovarian cancer and used the "supervised principal components" method to build a predictor of overall survival from these profiles and patient survival times. This 86-gene predictor discriminated between patients with favorable and unfavorable outcomes (average survival times of 41 and 19 months, respectively). It also

discriminated between groups of patients with these two outcomes in an independent dataset collected from 118 additional serous ovarian cancers. Next, the researchers used "functional class scoring" analysis to assess the association between pathway and transcription factor expression in the tumor samples and overall survival. Seventeen of 167 KEGG pathways ("wiring" diagrams of molecular interactions, reactions and relations involved in cellular processes and human diseases listed in the Kyoto Encyclopedia of Genes and Genomes) were associated with survival, 16 of which were confirmed in the independent dataset. Finally, 13 of 111 analyzed transcription factors were associated with overall survival in the tumor samples, 12 of which were confirmed in the independent dataset.

**What Do These Findings Mean?** These findings identify an 86-gene overall survival gene expression profile that seems to predict overall survival for women with advanced serous ovarian cancer. However, before this profile can be used clinically, further validation of the profile and more robust methods for determining gene expression profiles are needed. Importantly, these findings also provide new clues about the genes, pathways and transcription factors that contribute to the clinical outcome of serous ovarian cancer, clues that can now be exploited in the search for new treatment strategies. Finally, these findings suggest that it might eventually be possible to tailor therapies to the needs of individual patients by analyzing which pathways are activated in their tumors and thus improve survival times for women with advanced ovarian cancer.

**Additional Information.** Please access these Web sites via the online version of this summary at <http://dx.doi.org/10.1371/journal.pmed.1000024>.

- This study is further discussed in a *PLoS Medicine* Perspective by Simon Gayther and Kate Lawrenson
- See also a related *PLoS Medicine* Research Article by Huntsman and colleagues
- The US National Cancer Institute provides a brief description of what cancer is and how it develops, and information on all aspects of ovarian cancer for patients and professionals (in English and Spanish)
- The UK charity Cancerbackup provides general information about cancer, and more specific information about ovarian cancer
- MedlinePlus also provides links to other information about ovarian cancer (in English and Spanish)
- The KEGG Pathway database provides pathway maps of known molecular networks involved in a wide range of cellular processes