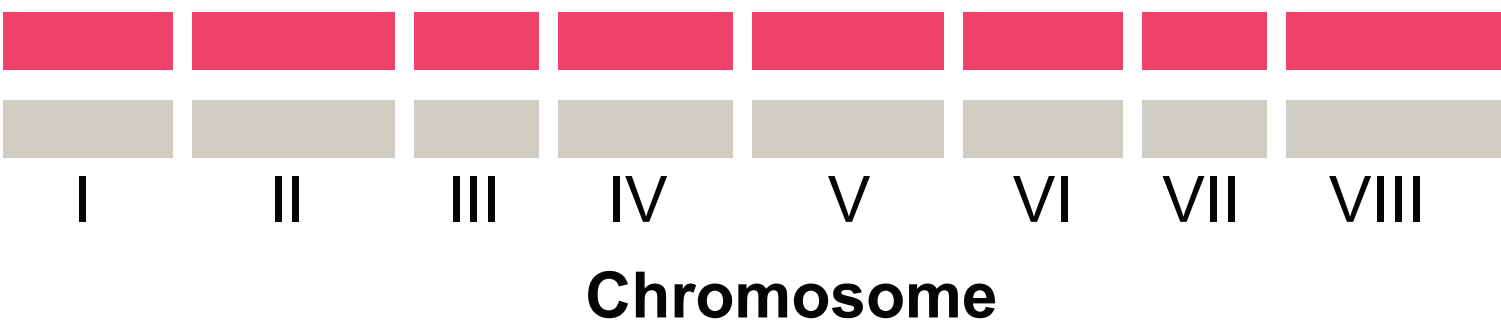
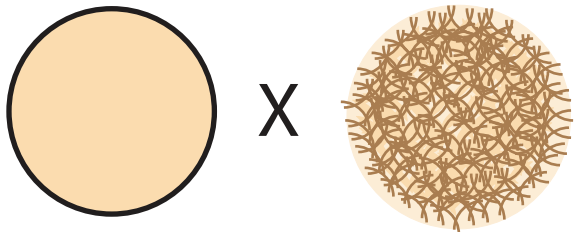
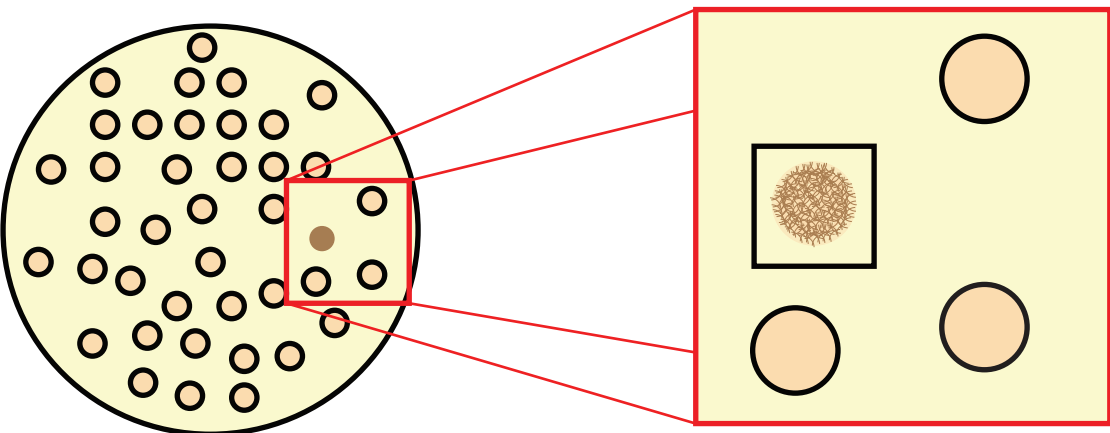


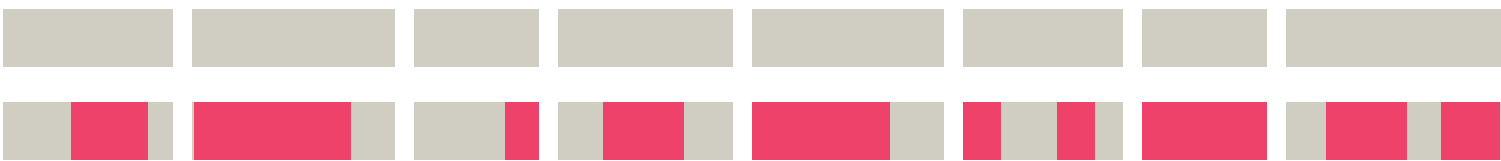
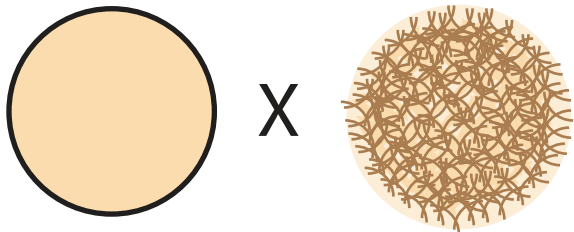
Backcross complex morphology segregant to parent strain to form a heterozygous diploid



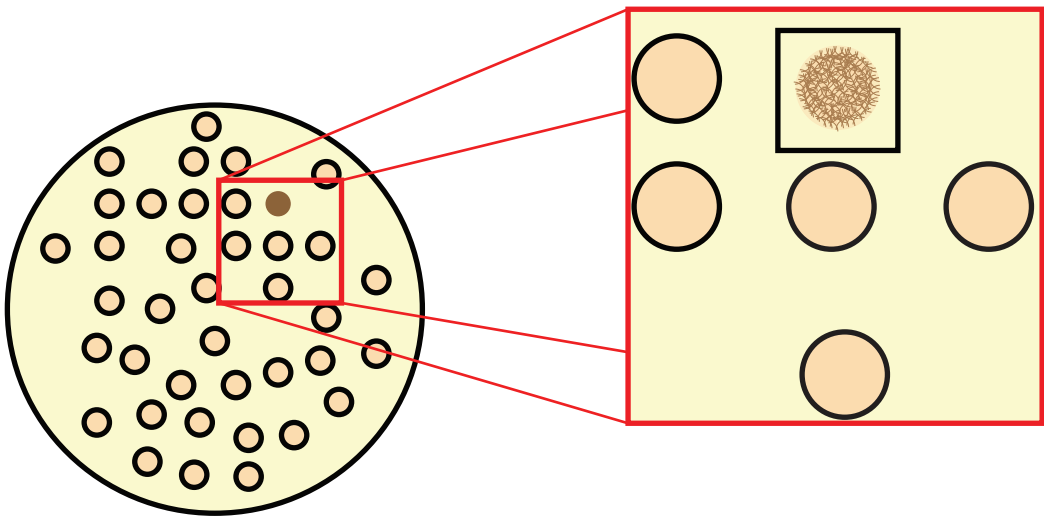
Sporulate diploid and screen segregants for complex morphology



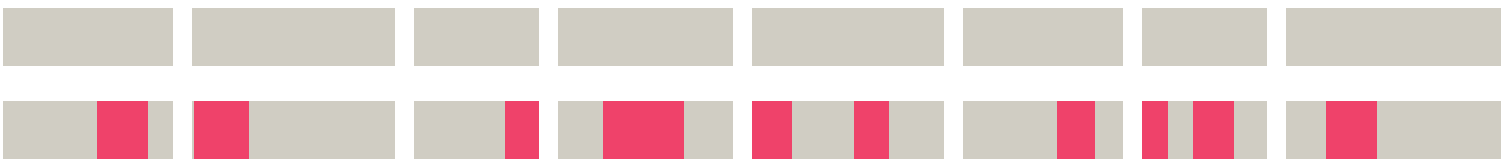
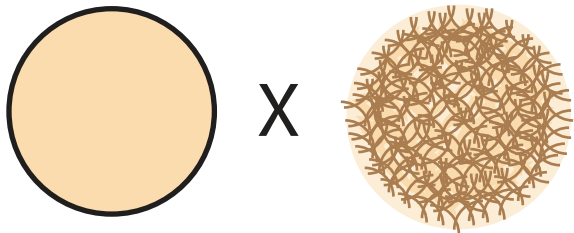
Backcross complex segregant to one of the parents



Sporulate diploid and screen segregants for complex morphology



Backcross complex segregant to one of the parents



Repeat sporulation, phenotypic screening, and backcrossing multiple times



Sporulate diploid and screen segregants for complex morphology

