

Nodal support: LRS/ χ^2

Deuterostome ERs

Protostome ERs

PRs

ARs

MRs

GRs

ERRs

SF1

RXRs

COUP-TFs

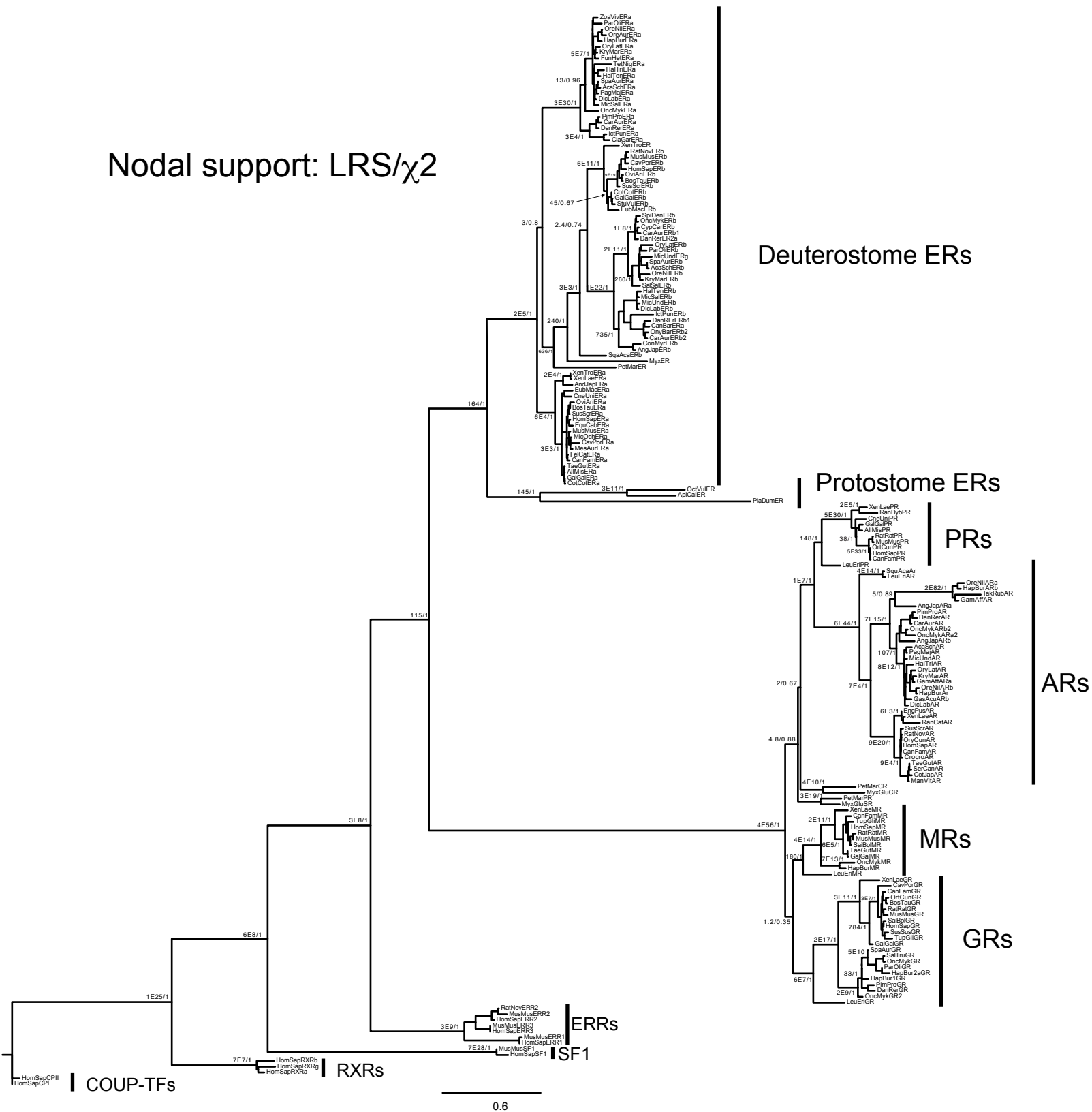


Fig. S10 Unreduced ML steroid receptor phylogeny based on alignment of 184 steroid receptors and related sequences used to reconstruct AncSR2. Nodal support is indicated by likelihood ratio statistics and chi-squared values. ERs, estrogen receptors; PRs, progesterone receptors; ARs, androgen receptors; MRs, mineralocorticoid receptors; GRs, glucocorticoid receptors; ERRs, estrogen-related receptors; SF1, steroidogenic factor 1 receptor; RXR, retinoid X receptors; COUP-TFs, chicken ovalbumin upstream promoter transcription factors.