

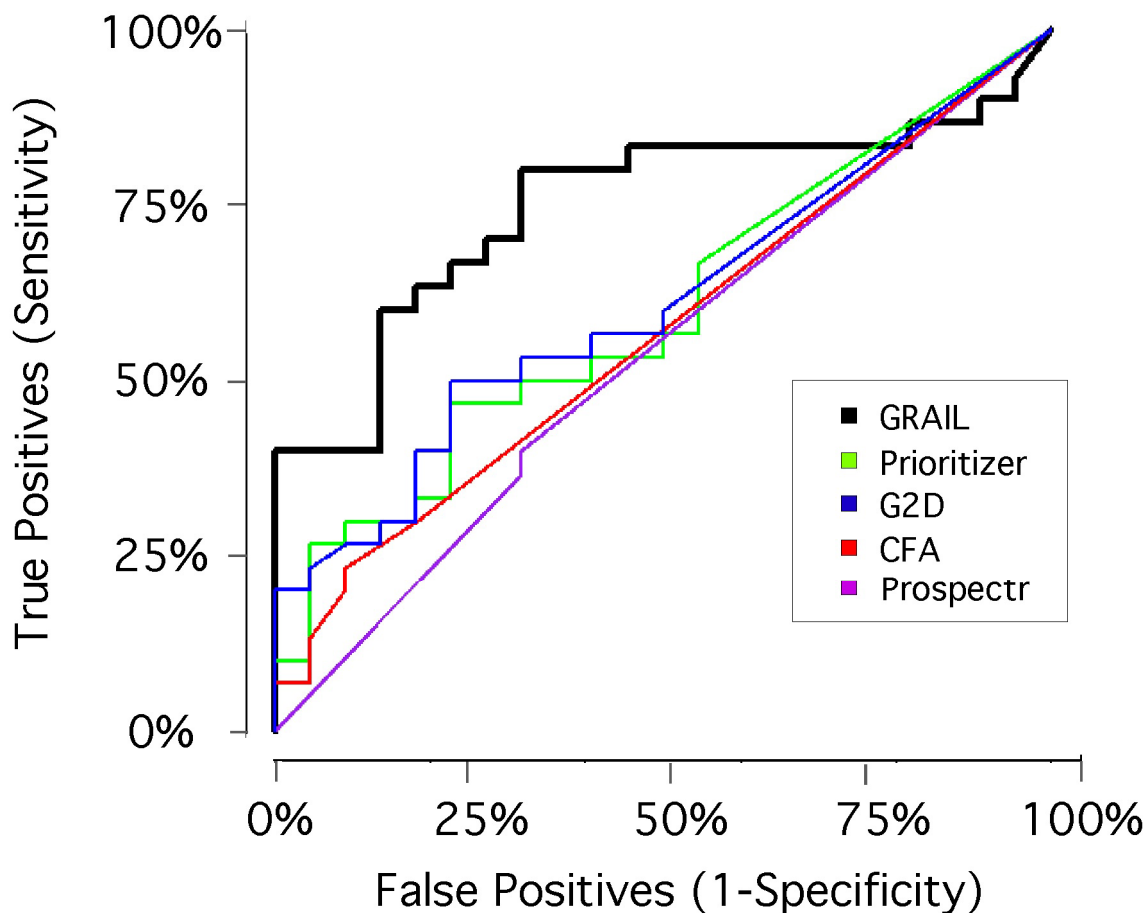
FIGURE S2

Figure S2. Sensitivity versus specificity for prioritization algorithms. We used 5 algorithms to score the 74 most promising putative SNP associations from the Crohn's meta-analysis study. We assessed each algorithm's ability to predict those SNP associations that ultimately validated in follow-up genotyping. For each algorithm, we created a received-operator curve (ROC).