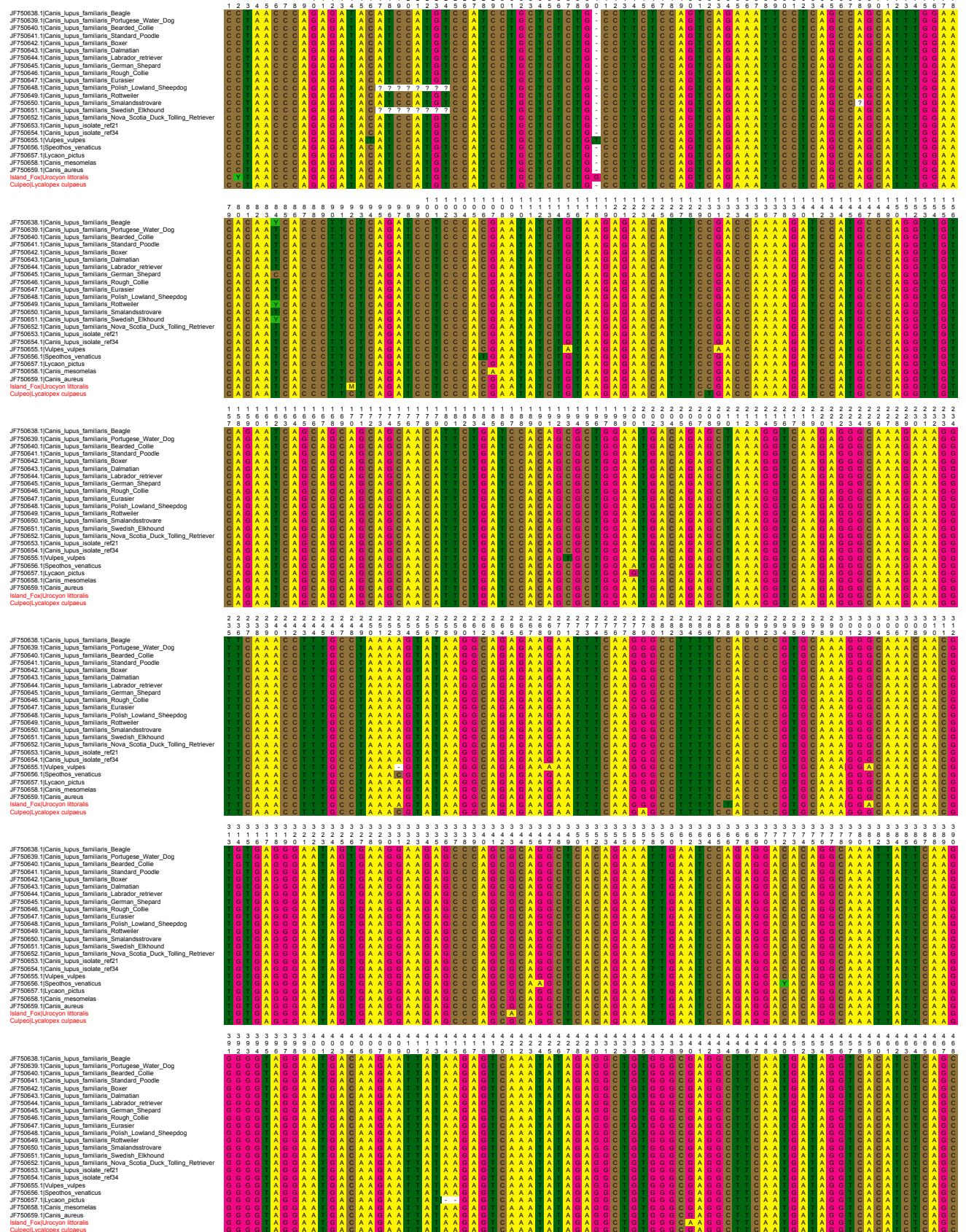
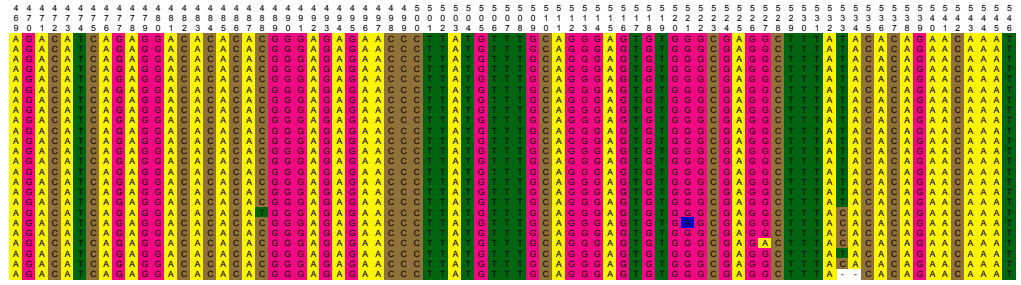


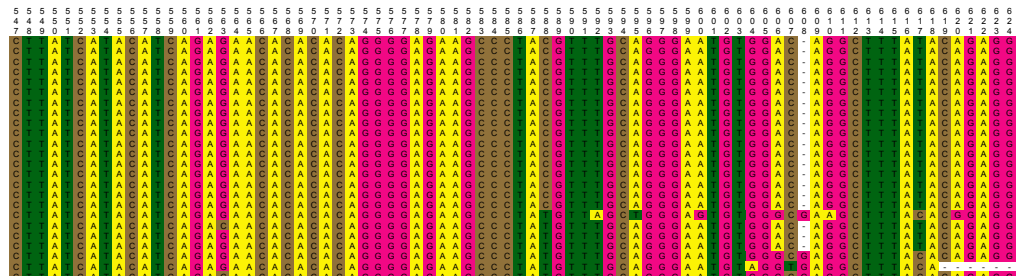
Table S4: PRDM9 exon 7 DNA sequences



JF750638.1|Canis_lupus_familiaris_Beagle
JF750639.1|Canis_lupus_familiaris_Portuguese_Water_Dog
JF750640.1|Canis_lupus_familiaris_Bearded_Collie
JF750641.1|Canis_lupus_familiaris_Standard_Poodle
JF750642.1|Canis_lupus_familiaris_Boxer
JF750643.1|Canis_lupus_familiaris_Dalmatian
JF750644.1|Canis_lupus_familiaris_Labrador_retriever
JF750645.1|Canis_lupus_familiaris_German_Shepard
JF750646.1|Canis_lupus_familiaris_Rough_Collie
JF750647.1|Canis_lupus_familiaris_Eurasier
JF750648.1|Canis_lupus_familiaris_Polish_Lowland_Sheepdog
JF750649.1|Canis_lupus_familiaris_Rottweiler
JF750650.1|Canis_lupus_familiaris_Smalandsstovare
JF750651.1|Canis_lupus_familiaris_Swedish_Elkhound
JF750652.1|Canis_lupus_familiaris_Nova_Scotia_Duck_Tolling_Retriever
JF750653.1|Canis_lupus_isolate_ref21
JF750654.1|Canis_lupus_isolate_ref34
JF750655.1|Vulpes_vulpes
JF750656.1|Speothos_venaticus
JF750657.1|Lycyon_pictus
JF750658.1|Canis_mesomelas
JF750659.1|Canis_aureus
Island_Fox(Urocyon_litoralis)
Cuipoji_ycaotepex_culpeus



JF750638.1|Canis_lupus_familiaris_Beagle
JF750639.1|Canis_lupus_familiaris_Portuguese_Water_Dog
JF750640.1|Canis_lupus_familiaris_Bearded_Collie
JF750641.1|Canis_lupus_familiaris_Standard_Poodle
JF750642.1|Canis_lupus_familiaris_Boxer
JF750643.1|Canis_lupus_familiaris_Dalmatian
JF750644.1|Canis_lupus_familiaris_Labrador_retriever
JF750645.1|Canis_lupus_familiaris_German_Shepard
JF750646.1|Canis_lupus_familiaris_Rough_Collie
JF750647.1|Canis_lupus_familiaris_Eurasier
JF750648.1|Canis_lupus_familiaris_Polish_Lowland_Sheepdog
JF750649.1|Canis_lupus_familiaris_Rottweiler
JF750650.1|Canis_lupus_familiaris_Smalandsstovare
JF750651.1|Canis_lupus_familiaris_Swedish_Elkhound
JF750652.1|Canis_lupus_familiaris_Nova_Scotia_Duck_Tolling_Retriever
JF750653.1|Canis_lupus_isolate_ref21
JF750654.1|Canis_lupus_isolate_ref34
JF750655.1|Vulpes_vulpes
JF750656.1|Speothos_venaticus
JF750657.1|Lycyon_pictus
JF750658.1|Canis_mesomelas
JF750659.1|Canis_aureus
Island_Fox(Urocyon_litoralis)
Cuipoji_ycaotepex_culpeus



JF750638.1|Canis_lupus_familiaris_Beagle
JF750639.1|Canis_lupus_familiaris_Portuguese_Water_Dog
JF750640.1|Canis_lupus_familiaris_Bearded_Collie
JF750641.1|Canis_lupus_familiaris_Standard_Poodle
JF750642.1|Canis_lupus_familiaris_Boxer
JF750643.1|Canis_lupus_familiaris_Dalmatian
JF750644.1|Canis_lupus_familiaris_Labrador_retriever
JF750645.1|Canis_lupus_familiaris_German_Shepard
JF750646.1|Canis_lupus_familiaris_Rough_Collie
JF750647.1|Canis_lupus_familiaris_Eurasier
JF750648.1|Canis_lupus_familiaris_Polish_Lowland_Sheepdog
JF750649.1|Canis_lupus_familiaris_Rottweiler
JF750650.1|Canis_lupus_familiaris_Smalandsstovare
JF750651.1|Canis_lupus_familiaris_Swedish_Elkhound
JF750652.1|Canis_lupus_familiaris_Nova_Scotia_Duck_Tolling_Retriever
JF750653.1|Canis_lupus_isolate_ref21
JF750654.1|Canis_lupus_isolate_ref34
JF750655.1|Vulpes_vulpes
JF750656.1|Speothos_venaticus
JF750657.1|Lycyon_pictus
JF750658.1|Canis_mesomelas
JF750659.1|Canis_aureus
Island_Fox(Urocyon_litoralis)
Cuipoji_ycaotepex_culpeus

