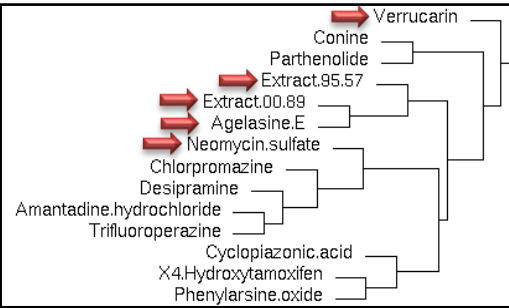
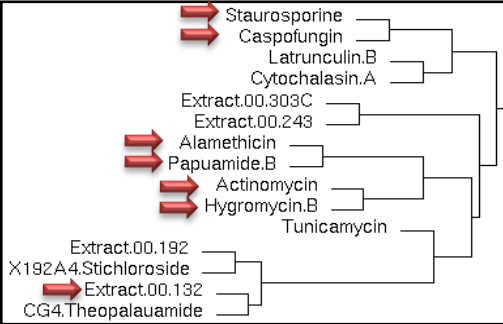


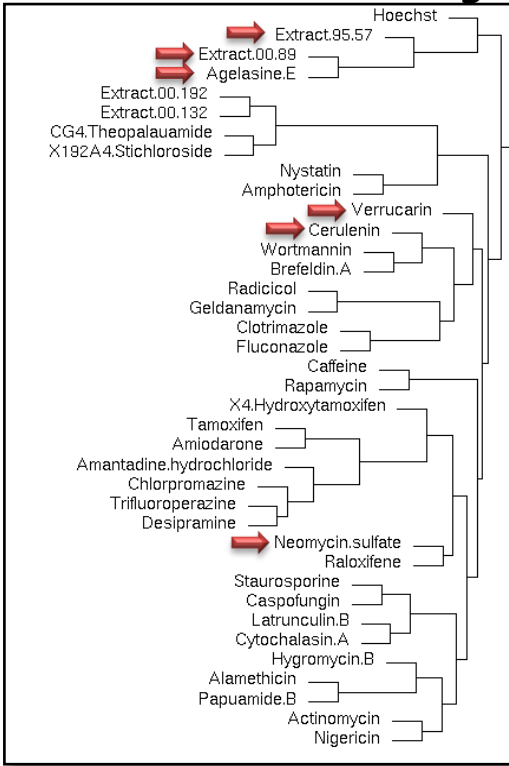
**PC-based clustering**



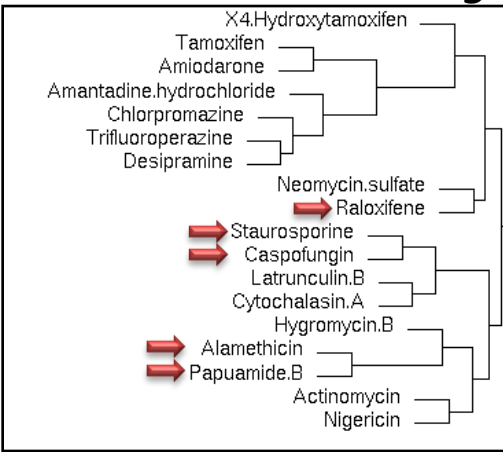
**PC-based clustering**



**Strain-based clustering**



**Strain-based clustering**



**Figure S6 Comparison of grouping of drugs by probabilistic sparse matrix factorization (PSMF), protein complex (PC)-based hierarchical clustering and strain-base hierarchical clustering.** The red arrow indicates drugs comprising a specific factor obtained by PSMF. (A) Group of drugs comprising factor 6. (B) Group of drugs comprising factor 5. The original factorgram images in the paper by Parsons et al [5] were used in this figure