

RESEARCH ARTICLE

Dynamic Nucleosome Movement Provides Structural Information of Topological Chromatin Domains in Living Human Cells

Soya Shinkai^{1*}, Tadasu Nozaki^{2,3}, Kazuhiro Maeshima^{2,4}, Yuichi Togashi¹

1 Research Center for the Mathematics on Chromatin Live Dynamics (RcMcD), Hiroshima University, Higashi-Hiroshima, Japan, **2** Biological Macromolecules Laboratory, Structural Biology Center, National Institute of Genetics, Mishima, Japan, **3** Institute for Advanced Biosciences, Keio University, Fujisawa, Japan, **4** Department of Genetics, School of Life Science, Graduate University for Advanced Studies (Sokendai), Mishima, Japan

* soya@hiroshima-u.ac.jp



CrossMark
click for updates

OPEN ACCESS

Citation: Shinkai S, Nozaki T, Maeshima K, Togashi Y (2016) Dynamic Nucleosome Movement Provides Structural Information of Topological Chromatin Domains in Living Human Cells. *PLoS Comput Biol* 12(10): e1005136. doi:10.1371/journal.pcbi.1005136

Editor: Alexandre V Morozov, Rutgers University, UNITED STATES

Received: July 12, 2016

Accepted: September 10, 2016

Published: October 20, 2016

Copyright: © 2016 Shinkai et al. This is an open access article distributed under the terms of the [Creative Commons Attribution License](https://creativecommons.org/licenses/by/4.0/), which permits unrestricted use, distribution, and reproduction in any medium, provided the original author and source are credited.

Data Availability Statement: All relevant data are within the paper and its Supporting Information files.

Funding: This research is supported by: Platform Project for Supporting in Drug Discovery and Life Science Research (Platform for Dynamic Approaches to Living System) from the Ministry of Education, Culture, Sports, Science and Technology (MEXT; <http://www.mext.go.jp/english/>) and the Japan Agency for Medical Research and Development (AMED; <http://www.amed.go.jp/en/>); MEXT KAKENHI (JP16H01408 to SS, JP23115007

Abstract

The mammalian genome is organized into submegabase-sized chromatin domains (CDs) including topologically associating domains, which have been identified using chromosome conformation capture-based methods. Single-nucleosome imaging in living mammalian cells has revealed subdiffusively dynamic nucleosome movement. It is unclear how single nucleosomes within CDs fluctuate and how the CD structure reflects the nucleosome movement. Here, we present a polymer model wherein CDs are characterized by fractal dimensions and the nucleosome fibers fluctuate in a viscoelastic medium with memory. We analytically show that the mean-squared displacement (MSD) of nucleosome fluctuations within CDs is subdiffusive. The diffusion coefficient and the subdiffusive exponent depend on the structural information of CDs. This analytical result enabled us to extract information from the single-nucleosome imaging data for HeLa cells. Our observation that the MSD is lower at the nuclear periphery region than the interior region indicates that CDs in the heterochromatin-rich nuclear periphery region are more compact than those in the euchromatin-rich interior region with respect to the fractal dimensions as well as the size. Finally, we evaluated that the average size of CDs is in the range of 100–500 nm and that the relaxation time of nucleosome movement within CDs is a few seconds. Our results provide physical and dynamic insights into the genome architecture in living cells.

Author Summary

The mammalian genome is partitioned into topological chromatin domains (CDs) in the living cell nuclei. Gene expression is highly regulated within CDs according to their structure, whereas chromatin itself is highly dynamic. This raises the following question: how is the CD structure in such dynamic chromatin? We developed a conceptual framework that unifies chromatin dynamics and structure. Using a polymer model with a fractal domain structure in a viscoelastic medium, we analytically show that nucleosome movement is

to YT, and JP23115005 to KM), and Research Fellowship for Young Scientists (JP13J04821 and JP16J07205) to TN. The funders had no role in study design, data collection and analysis, decision to publish, or preparation of the manuscript.

Competing Interests: The authors have declared that no competing interests exist.

subdiffusive and depends on CD structure. Hence, structural information can be extracted based on nucleosome movement in living cells with single-particle tracking experiments. This framework provides physical insights into the relationship between dynamic genome organization and gene expression.

Introduction

Genomic DNA is packed and folded three-dimensionally in the cell nuclei. In the nuclei of eukaryotic cells, the nucleosome is a basic unit consisting of an approximately 147-bp DNA wrapped around core histones [1]. Recent experimental evidences suggest that the nucleosome is irregularly folded without the 30-nm chromatin fiber [2–7]. On the other hand, at the scale of the whole nucleus, interphase chromosomes occupy distinct chromosome territories [8]. This highly organized chromosome structure allows for effective regulation of various genome functions.

By virtue of recent developments of chromosome conformation capture (3C) techniques, the genome-wide chromosome organization has been revealed by detecting the physical contact frequencies between pairs of genomic loci [9]. More recently, 3C derivatives, Hi-C and 5C profiles demonstrated that metazoan genomes are partitioned into submegabase-sized chromatin domains (CDs) including topologically associating domains (TADs) [10–12]. TADs are considered to be a regulatory and structural unit of the genome [13]; genome loci located in the same TAD are associated with each other, whereas genomic interactions are sharply depleted between adjacent domains. For even single-cell Hi-C, individual chromosomes maintain domain organization [14]. Furthermore, kilobase-resolution *in situ* Hi-C maps identified not only small contact domains but also CTCF-mediated loop domains [15, 16].

In contrast, dynamic aspects of chromatin have been shown by live-cell imaging experiments [17–24]. In particular, single-nucleosome imaging in living mammalian cells has revealed local nucleosome fluctuations caused by the thermal random force [25–27]. The mean-squared displacement (MSD) of dynamic nucleosome movement clearly shows subdiffusive motion,

$$\text{MSD}(t) = D_{\text{app}} \cdot t^{\beta} \quad (0 < \beta < 1), \quad (1)$$

where D_{app} is the apparent diffusion coefficient with dimension $\text{m}^2/\text{s}^{\beta}$. This means that nucleosome movement must be affected by restrictions from some factors but thermal noise. Therefore, there must be a way that the dynamic aspect is consistent with aspects of the genome organization. A theory is required to relate the dynamic aspects described by D_{app} and β to the structural features of CDs. To date, the subdiffusive exponent β has been considered to depend on the folding structure of nucleosome fibers [28] and the viscoelasticity of the thermal environment [29, 30].

The fractal nature of chromatin architecture as well as nucleus environment has been revealed recently [9, 31, 32]. The topological structure of CDs can be described by use of the fractal manner. Here, we propose a polymer model for a CD, whose conformational state is assumed to be expressed by the fractal dimension d_f in a viscoelastic medium with the exponent $0 < \alpha < 1$. Although not only the strings and binders switch model [33] but also the block copolymer model [34] can explain aspects of chromatin folding and chromosome architecture in Hi-C experiment datasets, in our model we abstract information on the conformational states of CDs and interpret their dynamic features by using size scaling according to the fractal dimensions. Accordingly, the analytical form of the MSD of nucleosomes in CDs can be

derived in terms of polymer physics. As a result, the structural information of CDs, such as the size and conformational state expressed by the fractal dimension, can be derived from the MSD data of dynamic nucleosomes.

Results

Polymer model

CDs characterized by fractal dimensions. To construct a model of CDs, we assumed that a nucleosome fiber is represented as a polymer bead chain and forms a CD with size scaling, $\langle R \rangle_{CD} \sim N^{1/d_f}$ (Fig 1A), where N is the number of nucleosome beads in the CD, and $\langle \cdot \rangle_{CD}$ represents the average for all nucleosome beads within the CD at thermal equilibrium. In polymer physics, the exponent $1/d_f$ corresponds to the size exponent ν [35, 36]. A nucleosome fiber in a CD not only has the excluded volume as a physical polymer, but also forms chromatin loops

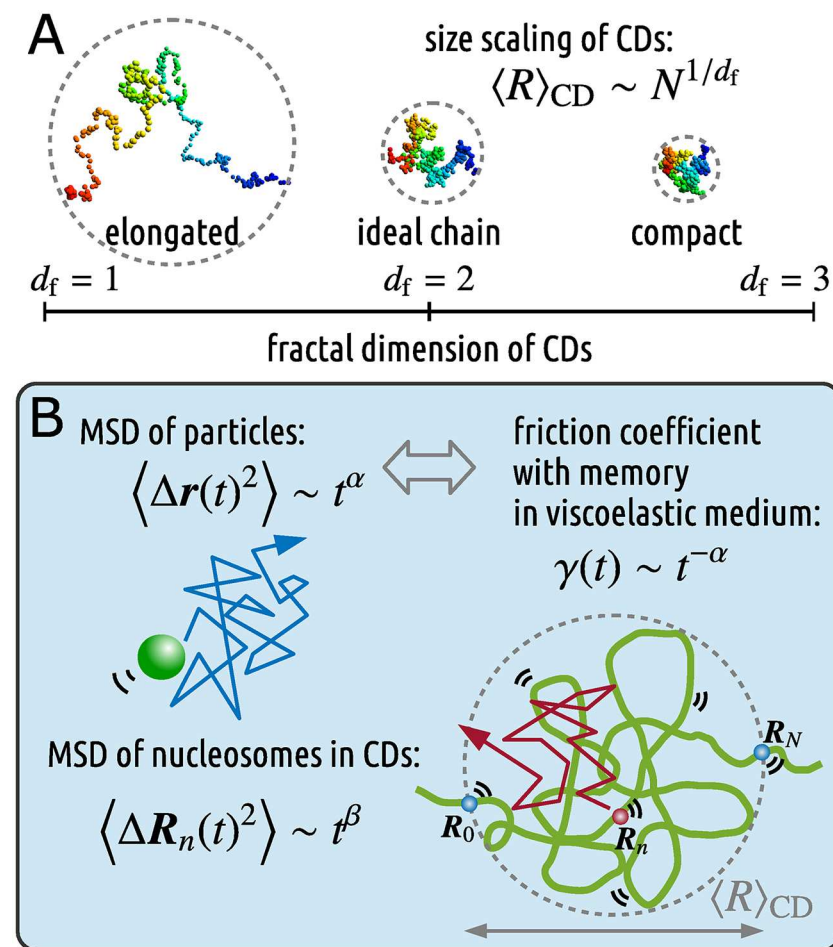


Fig 1. Schematic illustration of our polymer model for CDs. (A) A nucleosome fiber is represented as a polymer bead chain and forms a CD. The size scaling of CDs is expressed as $\langle R \rangle_{CD} \sim N^{1/d_f}$, where the fractal dimension represents the effective conformational state of CDs: $d_f = 1, 2,$ and 3 correspond to a straight line, the ideal chain, and the fractal globule, respectively. (B) The viscoelasticity of the medium, where the movement of particles shows the subdiffusive FBM $\langle \Delta r(t)^2 \rangle \sim t^\alpha$, is described using the friction coefficient with memory, $\gamma(t) \sim t^{-\alpha}$. When a nucleosome with coordinates $R_n(t)$ dynamically fluctuates in the viscoelastic medium, the movement of nucleosomes in CDs shows subdiffusion: $\langle \Delta R_n(t)^2 \rangle \sim t^\beta$.

doi:10.1371/journal.pcbi.1005136.g001

for transcriptional regulation [15, 16, 37]. Therefore, nucleosome fibers can interact with each other within the same CD through both attractive and repulsive interactions. Here, we assume that the effective conformational state of CDs is phenomenologically represented by the fractal dimension. Note that the states with $d_f = 1, 2,$ and 3 correspond to a straight line, the ideal chain [35], and the fractal globule [9, 28, 38], respectively (Fig 1A).

Nucleosome fiber fluctuation in viscoelastic medium with memory. The subdiffusive motion of tracer particles in living cells, $\langle [r(t) - r(0)]^2 \rangle \sim t^\alpha$, has been observed [29, 39–41]. There are several physical models for generating subdiffusion, including: (i) the generalized Langevin equation (GLE), which is consistent with fractional Brownian motion (FBM) [42–45], and (ii) the continuous-time random walk [46]. Since some experiments have shown that the movement of chromosomal loci displays the FBM [23, 29], here, we adopt the former model to describe the friction effect with memory in the viscoelastic medium [39, 47, 48] that satisfies the fluctuation-dissipation relation (FDR) [35, 49]: the GLE $\int_0^t \gamma(t-t') \frac{dr(t')}{dt'} dt' = \mathbf{g}(t)$, with friction coefficient with memory of $\gamma(t) \sim t^{-\alpha}$, generates the subdiffusive FBM. The thermal random force $\mathbf{g}(t)$ satisfies the FDR $\langle \mathbf{g}_\kappa(t) \mathbf{g}_\lambda(t') \rangle = k_B T \gamma(t-t') \delta_{\kappa\lambda}$, where k_B is the Boltzmann constant, T is the temperature of the environment, and the suffixes κ and λ represent x, y and z .

Here, we focus on the concrete description of our polymer model. A CD is assumed to be formed by $N + 1$ nucleosome beads at positions $\{\mathbf{R}_0, \mathbf{R}_1, \dots, \mathbf{R}_N\}$ (Fig 1B), and adjacent beads are connected via a harmonic spring so that the effective bond length is b_{eff} and long-range interactions exist such that the phenomenological size scaling of the CDs is proportional to N^{1/d_f} . Moreover, as mentioned above, the friction effect between each nucleosome and the viscoelastic medium is assumed to be described by the friction coefficient with memory [30, 44, 45, 47],

$$\gamma(t) = \frac{\gamma_\alpha}{\Gamma(1-\alpha)} t^{-\alpha}, \tag{2}$$

where the dimension of the coefficient γ_α is $\text{kg/s}^{2-\alpha}$, and the Laplace transform of $\gamma(t)$ has a simple form $\gamma_\alpha s^{\alpha-1}$ (see Eq S19 in S1 Text). In the continuous limit [35], the Langevin equation of nucleosomes is described as

$$\int_0^t \gamma(t-t') \frac{\partial \mathbf{R}(n, t')}{\partial t'} dt' = \frac{3k_B T}{b_{\text{eff}}^2} \frac{\partial^2 \mathbf{R}(n, t)}{\partial n^2} + \mathbf{F}^{(l)}(n, t) + \mathbf{g}(n, t), \tag{3}$$

where the long-range interaction force $\mathbf{F}^{(l)}(n, t)$ including attractive and repulsive interactions results in the size scaling

$$\langle [\mathbf{R}(n) - \mathbf{R}(m)]^2 \rangle_{\text{CD}} = b_{\text{eff}}^2 |n - m|^{2/d_f}, \tag{4}$$

and the thermal random force $\mathbf{g}(n, t)$ satisfies the FDR: $\langle \mathbf{g}_\kappa(n, t) \mathbf{g}_\lambda(m, t') \rangle = k_B T \gamma(t-t') \delta(n-m) \delta_{\kappa\lambda}$. Our model for $d_f = 2$ formally corresponds to the classical Rouse model in the viscoelastic medium [30], where the force $\mathbf{F}^{(l)}(n, t)$ apparently vanishes. Hence, the additional long-range interaction force generating the scaling (Eq 4) has an important role in our model, and enables us to calculate the MSD analytically. Here, we do not take into account the hydrodynamic interactions between nucleosomes, which are discussed in Discussion and S1 Text, Section II.

Analytical calculation shows that the MSD of nucleosomes within fractal CDs is subdiffusive in viscoelastic medium

A standard approach for treating Eq 3 is to use the normal coordinates $\mathbf{X}_p(t) \equiv \frac{1}{N} \int_0^N \cos\left(\frac{p\pi n}{N}\right) \mathbf{R}(n, t) dn$ for $p = 0, 1, 2, \dots$; however, the nonlinearity of the long-range interaction makes it difficult to deal with the equation in this manner. Therefore, to simplify the

analysis, firstly, we assume that nucleosome fluctuations within the CD reach thermal equilibrium after the relaxation time $\tau_{d,\infty}$ which is explicitly described below (Eqs 11 and 12). Second, we use an approximation to transform the nonlinear Langevin equation (Eq 3) into a linear equation by averaging under thermal equilibrium with respect to the normal coordinates

$$\int_0^t \gamma(t-t') \frac{d\mathbf{X}_p(t')}{dt'} dt' = -k_p \mathbf{X}_p(t) + \mathbf{g}_p(t). \tag{5}$$

The term in the left hand side and the second term in the right hand side (RHS) are straightforwardly derived according to the normal coordinates, in which $\mathbf{g}_p(t) \equiv \frac{1}{N} \int_0^N \cos\left(\frac{p\pi n}{N}\right) \mathbf{g}(n, t) dn$ satisfies $\langle \mathbf{g}_p(t) \rangle = 0$ and the FDR $\langle g_{p\kappa}(t) g_{q\lambda}(t') \rangle = \frac{k_B T}{N} \gamma(t-t') \delta_{\kappa\lambda} \delta_{pq} (1 + \delta_{p0}) / 2$ (see S1 Text, Section IA). Instead of the linearity of Eq 5, the parameter k_p implicitly includes the nonlinear effect such as the long-range interactions, and is determined by the variance of \mathbf{X}_p over the thermal relaxation time [30] (see S1 Text, Section IB):

$$k_p = \frac{3k_B T}{2N \langle \mathbf{X}_p^2 \rangle_{CD}} \quad \text{for } p \geq 1 \quad \text{and} \quad k_0 = 0. \tag{6}$$

Finally, to calculate the thermal average $\langle \mathbf{X}_p^2 \rangle_{CD}$, the effective size scaling (Eq 4) generated by the long-range interactions is used. The asymptotic form for large p is calculated as follows (see S1 Text, Section IC):

$$\langle \mathbf{X}_p^2 \rangle_{CD} \simeq \frac{\langle R^2 \rangle_{CD}}{2A_{d_t}} p^{-1-2/d_t}. \tag{7}$$

A_{d_t} is a dimensionless constant depending on the fractal dimension: $A_{d_t} = \frac{\pi^{1+2/d_t}}{\Gamma(1+2/d_t) \sin(\pi/d_t)}$. We shall refer to the above approximation as the linearization approximation, which is on the same level of the approximation as the preaveraging approximation in terms of polymer physics [35, 50]. From this point forward, to avoid complicated expressions caused by this asymptotic form, we regard the asymptotic sign ‘ \simeq ’ as equality.

Next, let us consider the MSD of nucleosomes in CDs. Since the inverse transform of normal coordinates is $\mathbf{R}(n, t) = \mathbf{X}_0(t) + 2 \sum_{p=1}^{\infty} \cos\left(\frac{p\pi n}{N}\right) \mathbf{X}_p(t)$ and the correlation between different modes vanishes, the MSD of the n -th nucleosome, $\phi(n, t) \equiv \langle [\mathbf{R}(n, t) - \mathbf{R}(n, 0)]^2 \rangle$, is expressed as

$$\phi(n, t) = \langle [\mathbf{X}_0(t) - \mathbf{X}_0(0)]^2 \rangle + 8 \sum_{p=1}^{\infty} \cos^2\left(\frac{p\pi n}{N}\right) \left[\langle \mathbf{X}_p^2 \rangle_{CD} - C_p(t) \right], \tag{8}$$

where the correlation function is defined as $C_p(t) \equiv \langle \mathbf{X}_p(t) \cdot \mathbf{X}_p(0) \rangle$. Multiplying Eq 5 by $\mathbf{X}_p(0)$ and averaging with $\langle \mathbf{g}_p(t) \cdot \mathbf{X}_p(0) \rangle = \langle \mathbf{g}_p(t) \rangle \cdot \langle \mathbf{X}_p(0) \rangle = 0$, we can derive that the correlation function for $p \geq 1$ satisfies

$$\int_0^t \gamma(t-t') \frac{dC_p(t')}{dt'} dt' = -k_p C_p(t). \tag{9}$$

The first term for $p = 0$ in the RHS of Eq 8 corresponds to the MSD of the center of the CD, and the motion obeys $\int_0^t \gamma(t-t') \frac{d\mathbf{X}_0(t')}{dt'} dt' = \mathbf{g}_0(t)$ and the FDR $\langle g_{0\kappa}(t) g_{0\lambda}(t') \rangle = \frac{k_B T}{N} \gamma(t-t') \delta_{\kappa\lambda}$. According to the fluctuation-dissipation theorem [49], the

motion of the center of mass is subdiffusive with exponent α (see S1 Text, Section IE):

$$\langle [\mathbf{X}_0(t) - \mathbf{X}_0(0)]^2 \rangle = \frac{2\langle R^2 \rangle_{\text{CD}}}{A_{d_f} \Gamma(1 + \alpha)} \left(\frac{t}{\tau_{d_f, \alpha}} \right)^\alpha, \quad (10)$$

where

$$\tau_{d_f, \alpha} \equiv \left(\frac{N \gamma_\alpha \langle R^2 \rangle_{\text{CD}}}{A_{d_f} \cdot 3k_B T} \right)^{1/\alpha} \quad (11)$$

represents the relaxation time of nucleosome fluctuations in the CD.

On the other hand, the second term in the RHS of Eq 8 describes the fluctuations of many modes inside the CD. Using the Laplace transformation and the thermal equilibrium initial state, the solution of Eq 9 can be derived as follows (see S1 Text, Section ID):

$$C_p(t) = \langle \mathbf{X}_p^2 \rangle_{\text{CD}} E_\alpha \left[-p^{1+2/d_f} \left(t/\tau_{d_f, \alpha} \right)^\alpha \right], \quad (12)$$

where $E_\alpha(x)$ is the Mittag-Leffler function. According to the polymer physics [35] for $t \ll \tau_{d_f, \alpha}$ $\phi(n, t)$ is dominated by terms with large p . Moreover, since the MSD in our experiment (Fig 2E) is calculated by averaging the nucleosome trajectories at various positions in CDs, the term $\cos^2\left(\frac{p\pi n}{N}\right)$ can be replaced by the average 1/2. Therefore, according to the asymptotic form of the Mittag-Leffler function, $E_\alpha(-x) \simeq \exp[-x/\Gamma(1 + \alpha)]$ for $x \ll 1$, and the conversion of the sum into the integral, we obtain for $t \ll \tau_{d_f, \alpha}$

$$\text{MSD}(t) \simeq \frac{2B_{d_f, \alpha} \langle R^2 \rangle_{\text{CD}}}{A_{d_f} \Gamma(1 + \alpha)} \left(\frac{t}{\tau_{d_f, \alpha}} \right)^{\alpha 2/(2+d_f)}, \quad (13)$$

where $B_{d_f, \alpha} = \frac{d_f}{2} [\Gamma(1 + \alpha)]^{d_f/(2+d_f)} \Gamma[d_f/(2 + d_f)]$ is a dimensionless constant (see S1 Text, Section IF). Thus, in our model, subdiffusive motion of single nucleosomes is a typical feature, assuming both fractal CDs and viscoelastic medium.

Nucleosome movement is much greater in the nuclear interior than at the nuclear periphery

In order to apply our model to living human cells, single-particle imaging of nucleosomes was performed by observation of PA-mCherry labels [51] attached to histone H2B in human HeLa cells (Fig 2A). The clear single-step photobleaching profile of the H2B-PA-mCherry dots shows a single H2B-PA-mCherry molecule in a single nucleosome (Fig 2B). We tracked approximately 40,000 dots representing single nucleosomes (S1 Table). Fig 2D shows representative trajectories of the dynamic nucleosome movement in single cells.

Here, to evaluate the state of CDs according to their position in the nucleus, we focused on the nuclear interior and periphery (or surface) (Fig 2C and S1 Fig), and calculated the MSD. The nuclear periphery is a heterochromatin-rich region, which presumably shows much less active transcription than the interior. The plots of the MSD at each region, in time interval t up to 0.5 s, are shown in Fig 2E (normal scale) and S2 Fig (log-log scale) (also see S1 Table). The MSD at the interior is higher than that at the periphery. This result implies that nucleosome movement within CDs in the euchromatin-rich interior region is higher than that in the heterochromatin-rich periphery region.

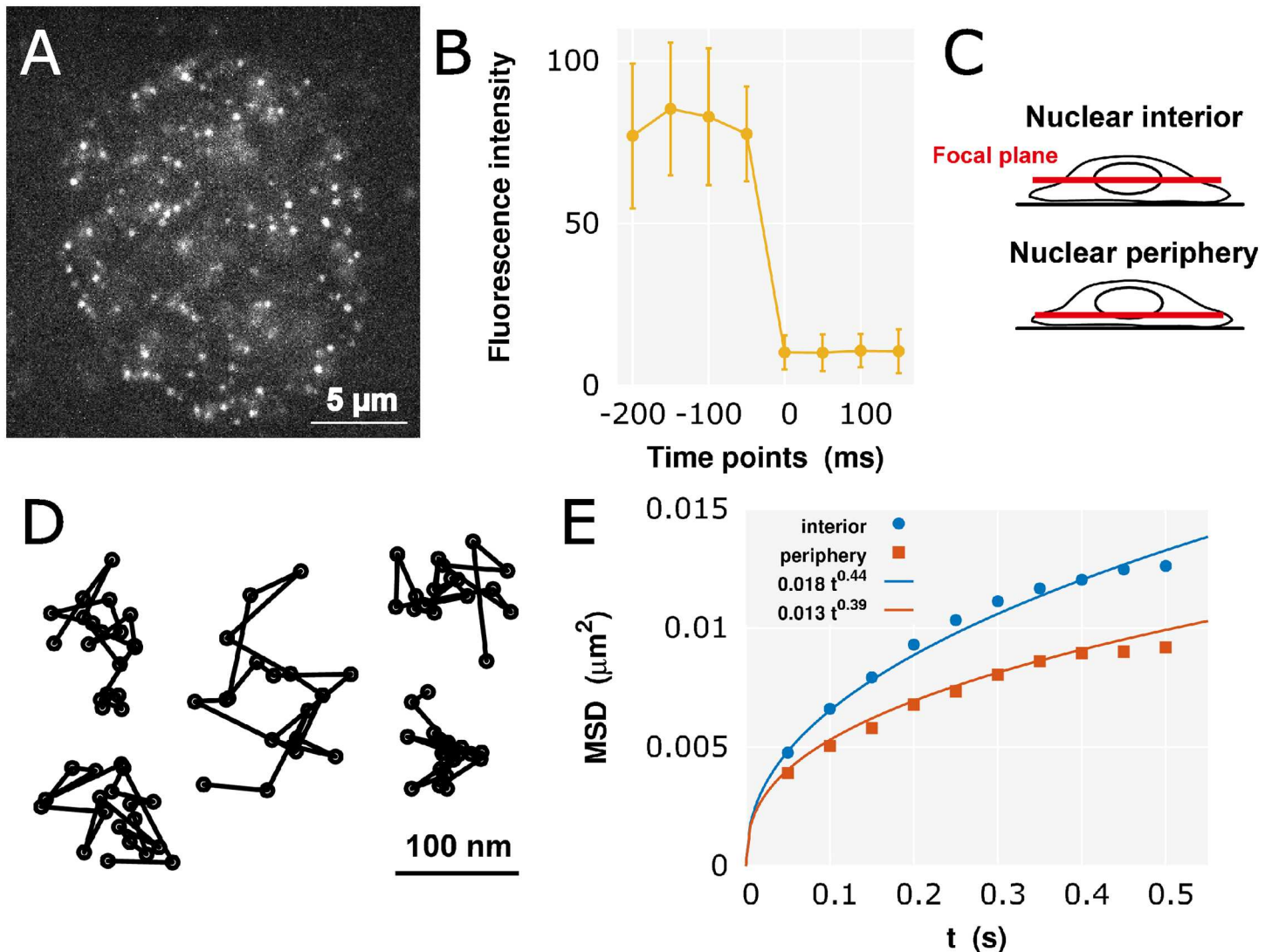


Fig 2. Single-nucleosome imaging and analysis. (A) Single-nucleosome image of a human HeLa cell nucleus expressing H2B-PA-mCherry. Each dot represents single nucleosome. (B) Evidence that each dot represents single-nucleosome molecule. Each H2B-PA-mCherry dot shows single-step photobleaching. The vertical axis represents the fluorescence intensity of each H2B-PA-mCherry dot. The horizontal axis is the tracking time series (each photobleaching point is set as time 0; the average and the standard deviation at each time point were calculated for 50 dots.). Due to the clear single-step photobleaching profile of the H2B-PA-mCherry dots, each dot shows a single H2B-PA-mCherry molecule in a single nucleosome. (C) A scheme for nuclear interior (Top) and periphery (Bottom) imaging. Focal plane (red) in the living cells is shown. See also S1 Fig. (D) Representative trajectories of fluorescently labeled single nucleosome (50 ms per frame). (E) Plots of the MSD at the interior and periphery regions. These fit well with the MSD curves using Eq 1.

doi:10.1371/journal.pcbi.1005136.g002

As we analytically derived the subdiffusive MSD (Eq 13), the experimental result clearly shows subdiffusion of single-nucleosomes: using Eq 1, the plots fit well with the MSD curves $0.018 t^{0.44} \mu\text{m}^2$ and $0.013 t^{0.39} \mu\text{m}^2$ for the interior and the periphery, respectively.

MSD is lower at the nuclear periphery than the interior, indicating that heterochromatin-rich CD are more compact

Comparing Eqs 1 and 13, β and D_{app} are calculated as

$$\beta = \alpha \cdot \frac{2}{2 + d_f}, \tag{14}$$

$$D_{\text{app}} = C_{d_f, \alpha} \cdot \left(\frac{3k_B T}{N\gamma_\alpha} \right)^{2/(2+d_f)} \cdot \langle R^2 \rangle_{\text{CD}}^{d_f/(2+d_f)}, \quad (15)$$

where $C_{d_f, \alpha} = \frac{2\beta_{d_f, \alpha}}{(A_{d_f})^{d_f/(2+d_f)}\Gamma(1+\alpha)}$. It turns out that these values contain statistical information of the CD structures, $\langle R \rangle_{\text{CD}}$ and d_f . Since β and D_{app} can be determined by the fitting in our experiments, we can therefore estimate $\langle R \rangle_{\text{CD}}$ and d_f inversely.

The lower MSD at the periphery than at the interior, $D_{\text{app,periphery}} < D_{\text{app,interior}}$ and $\beta_{\text{periphery}} < \beta_{\text{interior}}$, reflects the fact that the CDs near the periphery are in a more compact conformational state and are smaller in size than those at the interior: $d_{f,\text{periphery}} > d_{f,\text{interior}}$ and $\langle R \rangle_{\text{CD,periphery}} < \langle R \rangle_{\text{CD,interior}}$. This property is consistent with the conventional distribution of heterochromatin: the CDs in the heterochromatin-rich nuclear periphery are more compact than those in the euchromatin-rich interior [52].

Discussion

To estimate the structural information of CDs through solving Eqs 14 and 15 inversely, the values of N , α , and γ_α in mammalian living cell nuclei are required. The average size of TADs was determined to be 880 kb from mouse embryonic stem cells (mESCs), with a range of 100 kb to 5 Mb [10]. Here, we assume a CD size of 1 Mb, which corresponds to $\langle N \rangle_{\text{CD}} = 5000$ nucleosomes. To the best of our knowledge, few studies have estimated the friction effect in viscoelastic cell nuclei. Therefore, we use the value of the diffusion coefficient of enhanced green fluorescent protein (EGFP)-monomer around interphase chromatin, $D_{\text{EGFP}} = 20.6 \mu\text{m}^2/\text{s}$ [25], measured by fluorescence correlation spectroscopy, in which α is assumed to be 1. In general, as a result of the FDR in a viscoelastic medium with α , the diffusion coefficient of a diffusive particle for one degree of freedom is $k_B T / [\Gamma(1 + \alpha) \cdot \gamma_{\alpha, \text{particle}}]$ (see Eq. S34 in S1 Text). Since the contribution of $\Gamma(1 + \alpha)$ is within the range $1 \leq 1/\Gamma(1 + \alpha) < 1.13$ for $0 < \alpha \leq 1$, the friction coefficient of EGFP in the nucleus can be approximately regarded as the diffusion coefficient as $\gamma_{\alpha \rightarrow 1, \text{EGFP}} = k_B T / D_{\text{EGFP}}$. The hydrodynamic radius of a nucleosome bead with an H2B-PA-mCherry is assumed to be approximately quadruple for the EGFP. This means that the friction effect is also 4 times larger [48]. Accordingly, we use $\gamma_{\alpha \rightarrow 1} = 4k_B T / D_{\text{EGFP}}$. Finally, the structural information of CDs is estimated by calculating

$$d_f = \frac{2\alpha}{\beta} - 2, \quad (16)$$

$$\langle R \rangle_{\text{CD}} = \left(\frac{D_{\text{app}}}{C_{d_f, \alpha}} \right)^{\frac{2+d_f}{2d_f}} \left(\frac{4\langle N \rangle_{\text{CD}}}{3D_{\text{EGFP}}} \right)^{1/d_f}. \quad (17)$$

β could be measured in our experiment, although the value of α could not be determined simultaneously. Hence, Eq 16 represents the relationship between α and d_f , as shown in Fig 3A. Under this constrained condition, according to Eqs 16 and 17, the values of the structural information within the nuclear interior and periphery regions are calculated and mapped as a function of α (Fig 3B). Since fluorescence correlation spectroscopy measurements of GFP have shown that the value of α is close to 0.79 in not HeLa but NRK nuclei [31], as an example, we summarize the estimated values for $\alpha = 0.8$ and $\alpha = 0.9$ in Table 1. The exponent $\beta = 0.4$ for the fractal globule model [28] corresponds to the value for $d_f = 3$ and $\alpha = 1$ in Eq 14. Furthermore, our previous results have shown smaller exponents $\beta = 0.37$ and 0.31 for interphase chromatin and mitotic chromosome, respectively [25]. Unless considering the case of $0 < \alpha < 1$, this smaller exponent cannot be explained. Note that α has only minor effects on $C_{d_f, \alpha}$ (see S3 Fig).

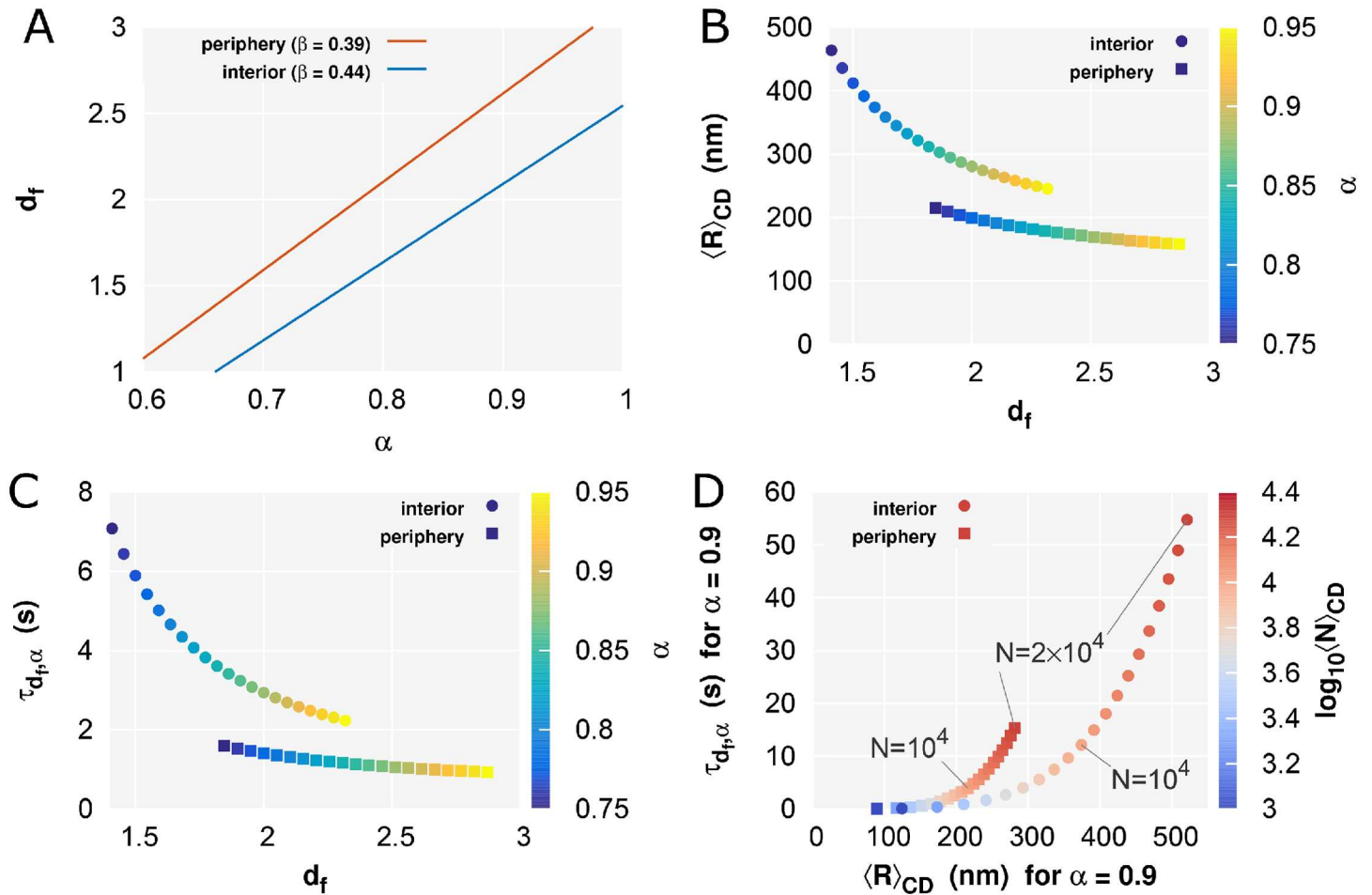


Fig 3. Structural information of CDs provided by single-nucleosome dynamics. (A) The fractal dimension d_f within the nuclear interior region ($\beta = 0.44$) and the periphery region ($\beta = 0.39$) for α , according to Eq 16. (B) d_f and the size $\langle R \rangle_{CD}$ of CDs, and (C) d_f and the relaxation time $\tau_{d_f, \alpha}$ of nucleosomes in CDs within the nuclear interior region (colored circle) and the periphery region (colored square) calculated for various α values, according to Eqs 16, 17 and 18. (D) $\langle R \rangle_{CD}$ and the $\tau_{d_f, \alpha}$ within the nuclear interior region (colored circle) and the periphery region (colored square) calculated for $\alpha = 0.9$ and various $\langle N \rangle_{CD}$ values, corresponding to the range of 200 kb to 4 Mb, according to Eqs 17 and 18.

doi:10.1371/journal.pcbi.1005136.g003

The relaxation time of nucleosomes in CDs is calculated as

$$\tau_{d_f, \alpha} = \left(\frac{4 \langle N \rangle_{CD} \langle R \rangle_{CD}^2}{A_{d_f} \cdot 3D_{EGFP}} \right)^{1/\alpha}, \tag{18}$$

Table 1. Estimated values of the fractal dimension d_f , the size $\langle R \rangle_{CD}$, and the relaxation time $\tau_{d_f, \alpha}$ for $\alpha = 0.8$ and $\alpha = 0.9$.

Region	β	$D_{app} (\mu m^2/s^\beta)$	$\alpha = 0.8$			$\alpha = 0.9$		
			d_f	$\langle R \rangle_{CD} (nm)$	$\tau_{d_f, \alpha} (s)$	d_f	$\langle R \rangle_{CD} (nm)$	$\tau_{d_f, \alpha} (s)$
Interior	0.44	0.018	1.64	358	4.65	2.09	268	2.69
Periphery	0.39	0.013	2.10	191	1.31	2.62	166	1.01

The exponent β and the apparent diffusion coefficient D_{app} are obtained by fitting of the MSD results at the interior and periphery regions (Fig 2C). In the calculation, we used the following values: $\langle N \rangle_{CD} = 5000$ nucleosomes, $\gamma_{\alpha-1} = 4k_B T/D_{EGFP}$ and $D_{EGFP} = 20.6 \mu m^2/s$.

doi:10.1371/journal.pcbi.1005136.t001

and is mapped as a function of α and d_f (Fig 3C). The short relaxation time (\sim s) means that the thermal equilibrium, which is the precondition for the linearization approximation, were fulfilled in our experiments. In measurements of long-term single-nucleosome movements, the MSD is expected to show a transition toward movement of the center of CDs with the exponent α (Eq 10). This would enable estimating α , d_p , $\langle R \rangle_{CD}$, and $\tau_{d_p, \alpha}$ without requiring the use of the assumptive values described above, such as $\langle N \rangle_{CD}$ and D_{EGFP} . The long-term ($\gg \tau_{d_p, \alpha}$) imaging of chromatin dynamics in mammalian nuclei might reveal this transition motion [19, 21, 24].

As mentioned at the beginning of this section, the measured TAD size of mESCs is in the range of 100 kb to 5 Mb. Fig 3D shows the relationship between $\langle R \rangle_{CD}$ and $\tau_{d_p, \alpha}$ for $\alpha = 0.9$ as a function of $\langle N \rangle_{CD}$, corresponding to the range of 200 kb to 4 Mb, according to Eqs 17 and 18. The relaxation time within several tens of seconds is consistent with the assumption of the linearization approximation as mentioned above. Moreover, the estimated CD size within 100–500 nm is also consistent with observed radius for chromatin domains as detected by super-resolution imaging [53].

The critical assumption of the linearization approximation is that nonlinear and complicated long-range interactions can be replaced by the mean-field fluctuation near thermal equilibrium within a fractal CD. Our result, that the estimated CD size is about 100–500 nm and the relaxation time is at most a few seconds, implies that the condition of the approximation is fulfilled. This kind of approximations has been discussed well in polymer physics [35], where the results of the approximation are not much different from those of more sophisticated calculations including the renormalization group theory. Furthermore, we have already reported that thermal fluctuation plays a dominant role in chromatin dynamics within CDs during a few seconds of observation for each fluorescent nucleosome [25–27]. On the other hand, successive ATP-dependent active processes on chromatin might play an important role in chromosome folding during mitosis [54]. In such a case, we cannot apply our theory due to the non-equilibrium nature.

In addition, non-equilibrium fluctuations driven by ATP-dependent cell activities affect chromatin dynamics [17, 20]. In order to directly take the effect into account, we have to add non-equilibrium fluctuation noise term to Eq 3. For a polymer with specific non-equilibrium fluctuations, where the correlation of the added athermal noise exponentially decays, a theoretical result has been obtained [55]. However, properties of non-equilibrium fluctuations on chromatin are unclear. It was suggested that a decrease of the chromatin persistence length of a CD may occur due to ATP-driven nucleosome remodeling [56]. We might consider an effect of ATP-driven remodeling on changes of the domain size and the fractal dimension.

Recent high-resolution Hi-C and ChIA-PET data have shown that architecture proteins such as CTCF and cohesin play important roles in CD organization at the boundaries [15, 16, 57]. However, because of experimental limitations including specific nucleosome labeling and microscopy resolution, we could not distinguish the nucleosome movements between the domain center and boundaries. Furthermore, different epigenetic states [53] including post-translational modifications [58] affect the spatial organization of chromatin domains. These effects seem to regulate nucleosome-nucleosome interactions. If we could directly observe the nucleosome movements depending on the interactions *in vivo* using a novel labeling technology, we would be able to extend our framework; which will be a challenging issue in the future.

Here, we considered a locally clustered polymer with effective size scaling (Eq 4) in the absence of hydrodynamic interactions (HIs) as a model of CDs. The inverse proportion of k_p to N , except for the contribution from $\langle X_p^2 \rangle_{CD}$, in Eq 6 reflects the lack of HIs in our model; that is, the hydrodynamic field goes through nucleosome beads without interactions. The hydrodynamic effect of surface monomers in a polymer blob on the exponent β has been argued in

[28]. Applying their discussion to our results, Eq 16 changes into $d_f = c(2\alpha/\beta - 2)$, where the coefficient c is within the range $1 \leq c < 1.09$. The effect is expected to be small. One can also consider a polymer model including HIs, which would affect the mobility matrix and work cooperatively within a polymer blob [35, 50]. In such a situation, the HI cancels out the effect of the size scaling described by the fractal dimension d_f : $\beta = \alpha \cdot 2/3$, and β does not depend on d_f (see S1 Text, Section II).

Conclusion

Our results indicate that our proposed model serves as a strong method for extracting the structural information of CDs from observations of dynamic nucleosome movement. Super-resolution microscopy techniques can be used to elucidate the spatial size of CDs according to different epigenetic states [53]. On the other hand, development of an effective imaging technique to reveal the fractal dimensions remains a challenge for the future. The conformational state of CDs characterized by the fractal dimension must be associated with the accessibility of transcription factors, depending on the physical size of those factors [59]. Beyond the pioneer computational work of analyzing interphase chromosomes based on the chromatin fibers [60], further development of not only a large-scale chromosome model based on the results of a genome-wide association study [61] but also restraint-based three-dimensional modeling of genomes [62] is expected to provide novel insight and open the door toward further discovery on the relationship between dynamic genome organization and stochastic gene expression.

Materials and Methods

Cell isolation and culture

To observe single nucleosomes and analyze their local dynamics in living human cells, histone H2B was fused with photoactivatable (PA)-red fluorescent protein (mCherry) [51] and expressed in HeLa cells as described previously [25]. The cell lines expressing H2B-PA-mCherry at a very low level were isolated. The cells were cultured in Dulbecco's modified Eagle's medium (DMEM) supplemented with 10% fetal bovine serum (FBS) (vol/vol) at 37°C in 5% CO₂ (vol/vol). The cells were plated 24–48 h before the experiment onto Iwaki glass bottom dishes treated with poly-lysine. Before the experiment, the medium was replaced by DMEM F-12 (non phenol red) with 15% FBS. The cells were then set on the microscope stage kept in a custom-built 37°C microscope incubator enclosure with 5% CO₂ (vol/vol) delivery throughout the experiment.

Microscopy

For single-nucleosome imaging, an oblique illumination microscope was used to illuminate a limited thin area within the cell (Nikon laser TIRF microscope system Ti with sapphire 564-nm laser). In general, PA-mCherry exhibits red fluorescence only after activation by a 405-nm laser [51]. However, we unexpectedly found that a relatively small number (~ 100 /time frame/nucleus) of H2B-PA-mCherry molecules were continuously and stochastically activated even without UV laser stimulation. Fig 2A shows a typical single-nucleosome image of a living HeLa cell. Due to the clear single-step photobleaching profile of the H2B-PA-mCherry dots, each dot in the nucleus represents a single H2B-PA-mCherry in a single nucleosome (Fig 2B). Nucleosome signals were recorded in the interphase chromatin of the nuclear interior and periphery in living HeLa cells at a frame rate of *ca.* 50 ms/frame. Note that the two different focal planes for the nuclear interior and periphery (Fig 2C) were precisely ensured by nuclear

surface labeling with Nup107 (a nuclear pore component)-Venus (a bright yellow fluorescent protein) [63] (see S1 Fig).

Tracking and data analysis

Local nucleosome fluctuation was observed (*ca.* 60 nm movement/50 ms), presumably caused by Brownian motion. The free MATLAB software u-track [64] was used for single-nucleosome tracking. The dots were fitted to an assumed Gaussian point spread function to determine the precise center of the signals with higher resolution. Finally, we obtained data set of two-dimensional M_i trajectories $\{(x_0^j, y_0^j), (x_1^j, y_1^j), \dots, (x_i^j, y_i^j)\}$, where the suffix $j \in \{1, \dots, M_i\}$ represents the sample number for the tracked time-interval $[0, t_i]$; $t_i \equiv i \times 50$ ms. Several representative trajectories of fluorescently tagged single nucleosomes are shown in Fig 2D (bar = 100 nm).

According to observed regions, we calculated the ensemble-averaged MSD of single nucleosomes: $MSD(t_i) = \frac{3}{2} \frac{1}{M_i} \sum_{j=1}^{M_i} [(x_i^j - x_0^j)^2 + (y_i^j - y_0^j)^2]$. Here, in order to obtain the three-dimensional value, we multiplied the two-dimensional value by 3/2 on the assumption of isotropy. Plots of the MSDs of single nucleosomes in interphase chromatin at the nuclear interior (10 cells) and the nuclear periphery (10 cells) from 0 to 0.5 s are shown in Fig 2E. The plots for single nucleosomes were fitted with the subdiffusion model (Eq 1) using R-software. The standard error of the mean (SEM), which is the standard deviation of the sampling distribution of the mean, for $MSD(t_i)$ was sufficiently small. The number of trajectories M_i and the SEM of MSD (t_i) are summarized in S1 Table.

Supporting Information

S1 Text. Further details on derivations of the theoretical results and remarks on the hydrodynamic effect for the model.

(PDF)

S1 Fig. A schematic representation for nuclear interior (Top left) and periphery (Top right) imaging. Illumination laser (green) and focal plane (red) in the living cells are shown. Note that the two different focal planes were precisely verified by nuclear surface labeling with Nup107 (a nuclear pore component)-Venus (a bright yellow fluorescent protein) [63]. The nuclear rim signals (Bottom left) and dot signals in ellipse shape (Bottom right) show the middle layer of nucleoplasm and the nuclear surface, respectively. Bar shows 5 μ m.

(TIF)

S2 Fig. Plots of the MSD (Fig 2E) on log-log scale.

(EPS)

S3 Fig. The function $C_{d_p, \alpha}$ of the fractal dimension d_f for $\alpha = 0.6, 0.7, 0.8, 0.9$, and 1.0 . α has only a slight effect on $C_{d_p, \alpha}$.

(EPS)

S1 Table. The number of tracked trajectories M_i and the standard error of the mean (SEM) of the MSD at the nuclear interior region and the periphery region. The measurements at each region were performed using 10 cells.

(PDF)

Acknowledgments

The authors thank Shin-ichi Tate, Akinori Awazu, Takeshi Sugawara, Hiroshi Ochiai, and Yasunori Horikoshi for fruitful discussions.

Author Contributions

Conceptualization: SS TN KM YT.

Investigation: SS TN.

Methodology: SS TN.

Writing – original draft: SS TN KM YT.

References

1. Kornberg RD, Lorch Y. Twenty-Five Years of the Nucleosome, Fundamental Particle of the Eukaryote Chromosome. *Cell*. 1999; 98(3):285–294. doi: [10.1016/S0092-8674\(00\)81958-3](https://doi.org/10.1016/S0092-8674(00)81958-3) PMID: [10458604](https://pubmed.ncbi.nlm.nih.gov/10458604/)
2. Maeshima K, Hihara S, Eltsov M. Chromatin structure: does the 30-nm fibre exist in vivo? *Curr Opin Cell Biol*. 2010; 22(3):291–297. doi: [10.1016/j.ceb.2010.03.001](https://doi.org/10.1016/j.ceb.2010.03.001) PMID: [20346642](https://pubmed.ncbi.nlm.nih.gov/20346642/)
3. Fussner E, Strauss M, Djuric U, Li R, Ahmed K, Hart M, et al. Open and closed domains in the mouse genome are configured as 10-nm chromatin fibres. *EMBO Rep*. 2012; 13(11):992–996. doi: [10.1038/embor.2012.139](https://doi.org/10.1038/embor.2012.139) PMID: [22986547](https://pubmed.ncbi.nlm.nih.gov/22986547/)
4. Joti Y, Hikima T, Nishino Y, Kamada F, Hihara S, Takata H, et al. Chromosomes without a 30-nm chromatin fiber. *Nucleus*. 2012; 3(5):404–410. doi: [10.4161/nucl.21222](https://doi.org/10.4161/nucl.21222) PMID: [22825571](https://pubmed.ncbi.nlm.nih.gov/22825571/)
5. Ricci M, Manzo C, García-Parajo MF, Lakadamyali M, Cosma M. Chromatin Fibers Are Formed by Heterogeneous Groups of Nucleosomes In Vivo. *Cell*. 2015; 160(6):1145–1158. doi: [10.1016/j.cell.2015.01.054](https://doi.org/10.1016/j.cell.2015.01.054) PMID: [25768910](https://pubmed.ncbi.nlm.nih.gov/25768910/)
6. Maeshima K, Rogge R, Tamura S, Joti Y, Hikima T, Szerlong H, et al. Nucleosomal arrays self-assemble into supramolecular globular structures lacking 30-nm fibers. *EMBO J*. 2016; 35(10):1115–1132. doi: [10.15252/embj.201592660](https://doi.org/10.15252/embj.201592660) PMID: [27072995](https://pubmed.ncbi.nlm.nih.gov/27072995/)
7. Chen C, Lim HH, Shi J, Tamura S, Maeshima K, Surana U, et al. Budding yeast chromatin is dispersed in a crowded nucleoplasm in vivo. *Mol Biol Cell*. 2016; doi: [10.1091/mbc.E16-07-0506](https://doi.org/10.1091/mbc.E16-07-0506) PMID: [27605704](https://pubmed.ncbi.nlm.nih.gov/27605704/)
8. Cremer T, Cremer C. Chromosome territories, nuclear architecture and gene regulation in mammalian cells. *Nat Rev Genet*. 2001; 2(4):292–301. doi: [10.1038/35066075](https://doi.org/10.1038/35066075) PMID: [11283701](https://pubmed.ncbi.nlm.nih.gov/11283701/)
9. Lieberman-Aiden E, van Berkum NL, Williams L, Imakaev M, Ragoczy T, Telling A, et al. Comprehensive Mapping of Long-Range Interactions Reveals Folding Principles of the Human Genome. *Science*. 2009; 326(5950):289–293. doi: [10.1126/science.1181369](https://doi.org/10.1126/science.1181369) PMID: [19815776](https://pubmed.ncbi.nlm.nih.gov/19815776/)
10. Dixon JR, Selvaraj S, Yue F, Kim A, Li Y, Shen Y, et al. Topological domains in mammalian genomes identified by analysis of chromatin interactions. *Nature*. 2012; 485:376–380. doi: [10.1038/nature11082](https://doi.org/10.1038/nature11082) PMID: [22495300](https://pubmed.ncbi.nlm.nih.gov/22495300/)
11. Nora EP, Lajoie BR, Schulz EG, Giorgetti L, Okamoto I, Servant N, et al. Spatial partitioning of the regulatory landscape of the X-inactivation centre. *Nature*. 2012; 485:381–385. doi: [10.1038/nature11049](https://doi.org/10.1038/nature11049) PMID: [22495304](https://pubmed.ncbi.nlm.nih.gov/22495304/)
12. Sexton T, Yaffe E, Kenigsberg E, Bantignies F, Leblanc B, Hoichman M, et al. Three-Dimensional Folding and Functional Organization Principles of the Drosophila Genome. *Cell*. 2012; 148(3):458–472. doi: [10.1016/j.cell.2012.01.010](https://doi.org/10.1016/j.cell.2012.01.010) PMID: [22265598](https://pubmed.ncbi.nlm.nih.gov/22265598/)
13. Dekker J, Heard E. Structural and functional diversity of Topologically Associating Domains. *FEBS Lett*. 2015; 589(20PartA):2877–2884. doi: [10.1016/j.febslet.2015.08.044](https://doi.org/10.1016/j.febslet.2015.08.044) PMID: [26348399](https://pubmed.ncbi.nlm.nih.gov/26348399/)
14. Nagano T, Lubling Y, Stevens TJ, Schoenfelder S, Yaffe E, Dean W, et al. Single-cell Hi-C reveals cell-to-cell variability in chromosome structure. *Nature*. 2013; 502(7469):59–64. doi: [10.1038/nature12593](https://doi.org/10.1038/nature12593) PMID: [24067610](https://pubmed.ncbi.nlm.nih.gov/24067610/)
15. Rao SP, Huntley M, Durand N, Stamenova E, Bochkov I, Robinson J, et al. A 3D Map of the Human Genome at Kilobase Resolution Reveals Principles of Chromatin Looping. *Cell*. 2014; 159(7):1665–1680. doi: [10.1016/j.cell.2014.11.021](https://doi.org/10.1016/j.cell.2014.11.021) PMID: [25497547](https://pubmed.ncbi.nlm.nih.gov/25497547/)
16. Sanborn AL, Rao SSP, Huang SC, Durand NC, Huntley MH, Jewett AI, et al. Chromatin extrusion explains key features of loop and domain formation in wild-type and engineered genomes. *Proc Natl Acad Sci USA*. 2015; 112(47):E6456–E6465. doi: [10.1073/pnas.1518552112](https://doi.org/10.1073/pnas.1518552112) PMID: [26499245](https://pubmed.ncbi.nlm.nih.gov/26499245/)
17. Heun P, Laroche T, Shimada K, Furrer P, Gasser SM. Chromosome Dynamics in the Yeast Interphase Nucleus. *Science*. 2001; 294(5549):2181–2186. doi: [10.1126/science.1065366](https://doi.org/10.1126/science.1065366) PMID: [11739961](https://pubmed.ncbi.nlm.nih.gov/11739961/)
18. Levi V, Ruan Q, Plutz M, Belmont AS, Gratton E. Chromatin Dynamics in Interphase Cells Revealed by Tracking in a Two-Photon Excitation Microscope. *Biophys J*. 2005; 89(6):4275–4285. doi: [10.1529/biophysj.105.066670](https://doi.org/10.1529/biophysj.105.066670) PMID: [16150965](https://pubmed.ncbi.nlm.nih.gov/16150965/)

19. Bronstein I, Israel Y, Kepten E, Mai S, Shav-Tal Y, Barkai E, et al. Transient Anomalous Diffusion of Telomeres in the Nucleus of Mammalian Cells. *Phys Rev Lett*. 2009; 103:018102. doi: [10.1103/PhysRevLett.103.018102](https://doi.org/10.1103/PhysRevLett.103.018102) PMID: [19659180](https://pubmed.ncbi.nlm.nih.gov/19659180/)
20. Weber SC, Spakowitz AJ, Theriot JA. Nonthermal ATP-dependent fluctuations contribute to the in vivo motion of chromosomal loci. *Proc Natl Acad Sci USA*. 2012; 109(19):7338–7343. doi: [10.1073/pnas.1119505109](https://doi.org/10.1073/pnas.1119505109) PMID: [22517744](https://pubmed.ncbi.nlm.nih.gov/22517744/)
21. Zidovska A, Weitz DA, Mitchison TJ. Micron-scale coherence in interphase chromatin dynamics. *Proc Natl Acad Sci USA*. 2013; 110(39):15555–15560. doi: [10.1073/pnas.1220313110](https://doi.org/10.1073/pnas.1220313110) PMID: [24019504](https://pubmed.ncbi.nlm.nih.gov/24019504/)
22. Hajjoul H, Mathon J, Ranchon H, Goiffon I, Mozziconacci J, Albert B, et al. High-throughput chromatin motion tracking in living yeast reveals the flexibility of the fiber throughout the genome. *Genome Res*. 2013; 23(11):1829–1838. doi: [10.1101/gr.157008.113](https://doi.org/10.1101/gr.157008.113) PMID: [24077391](https://pubmed.ncbi.nlm.nih.gov/24077391/)
23. Lucas J, Zhang Y, Dudko O, Murre C. 3D Trajectories Adopted by Coding and Regulatory DNA Elements: First-Passage Times for Genomic Interactions. *Cell*. 2014; 158(2):339–352. doi: [10.1016/j.cell.2014.05.036](https://doi.org/10.1016/j.cell.2014.05.036) PMID: [24998931](https://pubmed.ncbi.nlm.nih.gov/24998931/)
24. Ochiai H, Sugawara T, Yamamoto T. Simultaneous live imaging of the transcription and nuclear position of specific genes. *Nucleic Acids Res*. 2015; 43(19):e127. doi: [10.1093/nar/gkv624](https://doi.org/10.1093/nar/gkv624) PMID: [26092696](https://pubmed.ncbi.nlm.nih.gov/26092696/)
25. Hihara S, Pack CG, Kaizu K, Tani T, Hanafusa T, Nozaki T, et al. Local Nucleosome Dynamics Facilitate Chromatin Accessibility in Living Mammalian Cells. *Cell Rep*. 2012; 2:1645–1656. doi: [10.1016/j.celrep.2012.11.008](https://doi.org/10.1016/j.celrep.2012.11.008) PMID: [23246002](https://pubmed.ncbi.nlm.nih.gov/23246002/)
26. Nozaki T, Kaizu K, Pack CG, Tamura S, Tani T, Hihara S, et al. Flexible and dynamic nucleosome fiber in living mammalian cells. *Nucleus*. 2013; 4(5):349–356. doi: [10.4161/nucl.26053](https://doi.org/10.4161/nucl.26053) PMID: [23945462](https://pubmed.ncbi.nlm.nih.gov/23945462/)
27. Maeshima K, Ide S, Hibino K, Sasai M. Liquid-like behavior of chromatin. *Curr Opin Genet Dev*. 2016; 37:36–45. doi: [10.1016/j.gde.2015.11.006](https://doi.org/10.1016/j.gde.2015.11.006) PMID: [26826680](https://pubmed.ncbi.nlm.nih.gov/26826680/)
28. Tamm MV, Nazarov LI, Gavrilov AA, Chertovich AV. Anomalous Diffusion in Fractal Globules. *Phys Rev Lett*. 2015; 114:178102. doi: [10.1103/PhysRevLett.114.178102](https://doi.org/10.1103/PhysRevLett.114.178102) PMID: [25978267](https://pubmed.ncbi.nlm.nih.gov/25978267/)
29. Weber SC, Spakowitz AJ, Theriot JA. Bacterial Chromosomal Loci Move Subdiffusively through a Viscoelastic Cytoplasm. *Phys Rev Lett*. 2010; 104:238102. doi: [10.1103/PhysRevLett.104.238102](https://doi.org/10.1103/PhysRevLett.104.238102) PMID: [20867274](https://pubmed.ncbi.nlm.nih.gov/20867274/)
30. Weber SC, Theriot JA, Spakowitz AJ. Subdiffusive motion of a polymer composed of subdiffusive monomers. *Phys Rev E*. 2010; 82:011913. doi: [10.1103/PhysRevE.82.011913](https://doi.org/10.1103/PhysRevE.82.011913) PMID: [20866654](https://pubmed.ncbi.nlm.nih.gov/20866654/)
31. Bancaud A, Huet S, Daigle N, Mozziconacci J, Beaudouin J, Ellenberg J. Molecular crowding affects diffusion and binding of nuclear proteins in heterochromatin and reveals the fractal organization of chromatin. *EMBO J*. 2009; 28(24):3785–3798. doi: [10.1038/emboj.2009.340](https://doi.org/10.1038/emboj.2009.340) PMID: [19927119](https://pubmed.ncbi.nlm.nih.gov/19927119/)
32. Yi J, Stypula-Cyrus Y, Blaha C, Roy H, Backman V. Fractal Characterization of Chromatin Decompaction in Live Cells. *Biophys J*. 2015; 109(11):2218–2226. doi: [10.1016/j.bpj.2015.10.014](https://doi.org/10.1016/j.bpj.2015.10.014) PMID: [26636933](https://pubmed.ncbi.nlm.nih.gov/26636933/)
33. Barbieri M, Chotalia M, Fraser J, Lavitas LM, Dostie J, Pombo A, et al. Complexity of chromatin folding is captured by the strings and binders switch model. *Proc Natl Acad Sci USA*. 2012; 109(40):16173–16178. doi: [10.1073/pnas.1204799109](https://doi.org/10.1073/pnas.1204799109) PMID: [22988072](https://pubmed.ncbi.nlm.nih.gov/22988072/)
34. Jost D, Carrivain P, Cavalli G, Vaillant C. Modeling epigenome folding: formation and dynamics of topologically associated chromatin domains. *Nucleic Acids Res*. 2014; 42(15):9553–9561. doi: [10.1093/nar/gku698](https://doi.org/10.1093/nar/gku698) PMID: [25092923](https://pubmed.ncbi.nlm.nih.gov/25092923/)
35. Doi M, Edwards SF. *The Theory of Polymer Dynamics*. Oxford University Press; 1988.
36. Bhattacharjee SM, Giacometti A, Maritan A. Flory theory for polymers. *J Phys: Condens Matter*. 2013; 25(50):503101. doi: [10.1088/0953-8984/25/50/503101](https://doi.org/10.1088/0953-8984/25/50/503101)
37. Fraser J, Williamson I, Bickmore WA, Dostie J. An Overview of Genome Organization and How We Got There: from FISH to Hi-C. *Microbiol Mol Biol Rev*. 2015; 79(3):347–372. doi: [10.1128/MMBR.00006-15](https://doi.org/10.1128/MMBR.00006-15) PMID: [26223848](https://pubmed.ncbi.nlm.nih.gov/26223848/)
38. Grosberg A, Rabin Y, Havlin S, Neer A. Crumpled Globule Model of the Three-Dimensional Structure of DNA. *Europhys Lett*. 1993; 23(5):373. doi: [10.1209/0295-5075/23/5/012](https://doi.org/10.1209/0295-5075/23/5/012)
39. Tolić-Nørrelykke IM, Munteanu EL, Thon G, Oddershede L, Berg-Sørensen K. Anomalous Diffusion in Living Yeast Cells. *Phys Rev Lett*. 2004; 93:078102. doi: [10.1103/PhysRevLett.93.078102](https://doi.org/10.1103/PhysRevLett.93.078102) PMID: [15324280](https://pubmed.ncbi.nlm.nih.gov/15324280/)
40. Golding I, Cox EC. Physical Nature of Bacterial Cytoplasm. *Phys Rev Lett*. 2006; 96:098102. doi: [10.1103/PhysRevLett.96.098102](https://doi.org/10.1103/PhysRevLett.96.098102) PMID: [16606319](https://pubmed.ncbi.nlm.nih.gov/16606319/)

41. Jeon JH, Tejedor V, Burov S, Barkai E, Selhuber-Unkel C, Berg-Sørensen K, et al. *In vivo* Anomalous Diffusion and Weak Ergodicity Breaking of Lipid Granules. *Phys Rev Lett*. 2011; 106:048103. doi: [10.1103/PhysRevLett.106.048103](https://doi.org/10.1103/PhysRevLett.106.048103) PMID: [21405366](https://pubmed.ncbi.nlm.nih.gov/21405366/)
42. Mandelbrot BB, Ness JWV. Fractional Brownian Motions, Fractional Noises and Applications. *SIAM Rev*. 1968; 10(4):422–437. doi: [10.1137/1010093](https://doi.org/10.1137/1010093)
43. Kou SC, Xie XS. Generalized Langevin Equation with Fractional Gaussian Noise: Subdiffusion within a Single Protein Molecule. *Phys Rev Lett*. 2004; 93:180603. doi: [10.1103/PhysRevLett.93.180603](https://doi.org/10.1103/PhysRevLett.93.180603) PMID: [15525146](https://pubmed.ncbi.nlm.nih.gov/15525146/)
44. Deng W, Barkai E. Ergodic properties of fractional Brownian-Langevin motion. *Phys Rev E*. 2009; 79:011112. doi: [10.1103/PhysRevE.79.011112](https://doi.org/10.1103/PhysRevE.79.011112) PMID: [19257006](https://pubmed.ncbi.nlm.nih.gov/19257006/)
45. Jeon JH, Metzler R. Fractional Brownian motion and motion governed by the fractional Langevin equation in confined geometries. *Phys Rev E*. 2010; 81:021103. doi: [10.1103/PhysRevE.81.021103](https://doi.org/10.1103/PhysRevE.81.021103) PMID: [20365526](https://pubmed.ncbi.nlm.nih.gov/20365526/)
46. Metzler R, Klafter J. The random walk's guide to anomalous diffusion: a fractional dynamics approach. *Phys Rep*. 2000; 339(1):1–77. doi: [10.1016/S0370-1573\(00\)00070-3](https://doi.org/10.1016/S0370-1573(00)00070-3)
47. Schiessel H, Metzler R, Blumen A, Nonnenmacher TF. Generalized viscoelastic models: their fractional equations with solutions. *J Phys A: Math Gen*. 1995; 28(23):6567. doi: [10.1088/0305-4470/28/23/012](https://doi.org/10.1088/0305-4470/28/23/012)
48. Mason TG, Weitz DA. Optical Measurements of Frequency-Dependent Linear Viscoelastic Moduli of Complex Fluids. *Phys Rev Lett*. 1995; 74:1250–1253. doi: [10.1103/PhysRevLett.74.1250](https://doi.org/10.1103/PhysRevLett.74.1250) PMID: [10058972](https://pubmed.ncbi.nlm.nih.gov/10058972/)
49. Kubo R, Toda M, Hashitsume N. *Statistical Physics II: Nonequilibrium Statistical Mechanics*. 2nd ed. Springer-Verlag, Berlin, Heidelberg; 1991.
50. Zimm BH. Dynamics of Polymer Molecules in Dilute Solution: Viscoelasticity, Flow Birefringence and Dielectric Loss. *J Chem Phys*. 1956; 24(2):269–278. doi: [10.1063/1.1742462](https://doi.org/10.1063/1.1742462)
51. Subach FV, Patterson GH, Manley S, Gillette JM, Lippincott-Schwartz J, Verkhusha VV. Photoactivatable mCherry for high-resolution two-color fluorescence microscopy. *Nat Meth*. 2009; 6(2):153–159. doi: [10.1038/nmeth.1298](https://doi.org/10.1038/nmeth.1298) PMID: [19169259](https://pubmed.ncbi.nlm.nih.gov/19169259/)
52. Solovei I, Kreysing M, Lanctôt C, Kösem S, Peichl L, Cremer T, et al. Nuclear Architecture of Rod Photoreceptor Cells Adapts to Vision in Mammalian Evolution. *Cell*. 2009; 137(2):356–368. doi: [10.1016/j.cell.2009.01.052](https://doi.org/10.1016/j.cell.2009.01.052) PMID: [19379699](https://pubmed.ncbi.nlm.nih.gov/19379699/)
53. Boettiger AN, Bintu B, Moffitt JR, Wang S, Beliveau BJ, Fudenberg G, et al. Super-resolution imaging reveals distinct chromatin folding for different epigenetic states. *Nature*. 2016; 529(7586):418–422. doi: [10.1038/nature16496](https://doi.org/10.1038/nature16496) PMID: [26760202](https://pubmed.ncbi.nlm.nih.gov/26760202/)
54. Goloborodko A, Imakaev MV, Marko JF, Mirny L. Compaction and segregation of sister chromatids via active loop extrusion. *eLife*. 2016; 5:e14864. doi: [10.7554/eLife.14864](https://doi.org/10.7554/eLife.14864) PMID: [27192037](https://pubmed.ncbi.nlm.nih.gov/27192037/)
55. Sakaue T, Saito T. Active diffusion of model chromosomal loci driven by athermal noise. *Soft Matter*. 2016; p. –. doi: [10.1039/c6sm00775a](https://doi.org/10.1039/c6sm00775a) PMID: [27296909](https://pubmed.ncbi.nlm.nih.gov/27296909/)
56. Dion V, Gasser S. Chromatin Movement in the Maintenance of Genome Stability. *Cell*. 2013; 152(6):1355–1364. doi: [10.1016/j.cell.2013.02.010](https://doi.org/10.1016/j.cell.2013.02.010) PMID: [23498942](https://pubmed.ncbi.nlm.nih.gov/23498942/)
57. Tang Z, Luo O, Li X, Zheng M, Zhu J, Szalaj P, et al. CTCF-Mediated Human 3D Genome Architecture Reveals Chromatin Topology for Transcription. *Cell*. 2015; 163(7):1611–1627. doi: [10.1016/j.cell.2015.11.024](https://doi.org/10.1016/j.cell.2015.11.024) PMID: [26686651](https://pubmed.ncbi.nlm.nih.gov/26686651/)
58. Schones DE, Zhao K. Genome-wide approaches to studying chromatin modifications. *Nat Rev Genet*. 2008; 9(3):179–191. doi: [10.1038/nrg2270](https://doi.org/10.1038/nrg2270) PMID: [18250624](https://pubmed.ncbi.nlm.nih.gov/18250624/)
59. Maeshima K, Kaizu K, Tamura S, Nozaki T, Kokubo T, Takahashi K. The physical size of transcription factors is key to transcriptional regulation in chromatin domains. *J Phys: Condens Matter*. 2015; 27(6):064116. doi: [10.1088/0953-8984/27/6/064116](https://doi.org/10.1088/0953-8984/27/6/064116) PMID: [25563431](https://pubmed.ncbi.nlm.nih.gov/25563431/)
60. Rosa A, Everaers R. Structure and Dynamics of Interphase Chromosomes. *PLoS Comput Biol*. 2008; 4(8):e1000153. doi: [10.1371/journal.pcbi.1000153](https://doi.org/10.1371/journal.pcbi.1000153) PMID: [18725929](https://pubmed.ncbi.nlm.nih.gov/18725929/)
61. Cheng TM, Heeger S, Chaleil RA, Matthews N, Stewart A, Wright J, et al. A simple biophysical model emulates budding yeast chromosome condensation. *eLife*. 2015; 4:e05565. doi: [10.7554/eLife.05565](https://doi.org/10.7554/eLife.05565) PMID: [25922992](https://pubmed.ncbi.nlm.nih.gov/25922992/)
62. Serra F, Di Stefano M, Spill YG, Cuartero Y, Goodstadt M, Baù D, et al. Restraint-based three-dimensional modeling of genomes and genomic domains. *FEBS Lett*. 2015; 589(20PartA):2987–2995. doi: [10.1016/j.febslet.2015.05.012](https://doi.org/10.1016/j.febslet.2015.05.012) PMID: [25980604](https://pubmed.ncbi.nlm.nih.gov/25980604/)

63. Maeshima K, Iino H, Hihara S, Funakoshi T, Watanabe A, Nishimura M, et al. Nuclear pore formation but not nuclear growth is governed by cyclin-dependent kinases (Cdks) during interphase. *Nat Struct Mol Biol.* 2010; 17(9):1065–1071. doi: [10.1038/nsmb.1878](https://doi.org/10.1038/nsmb.1878) PMID: [20711190](https://pubmed.ncbi.nlm.nih.gov/20711190/)
64. Jaqaman K, Loerke D, Mettlen M, Kuwata H, Grinstein S, Schmid SL, et al. Robust single-particle tracking in live-cell time-lapse sequences. *Nat Meth.* 2008; 5(8):695–702. doi: [10.1038/nmeth.1237](https://doi.org/10.1038/nmeth.1237) PMID: [18641657](https://pubmed.ncbi.nlm.nih.gov/18641657/)