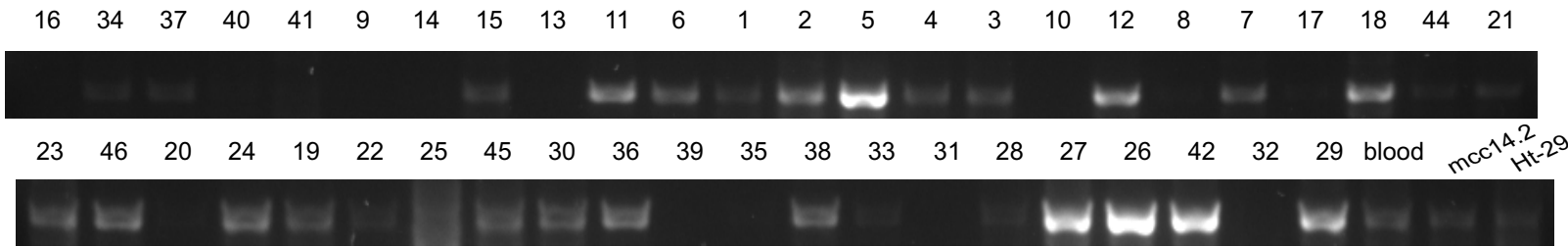


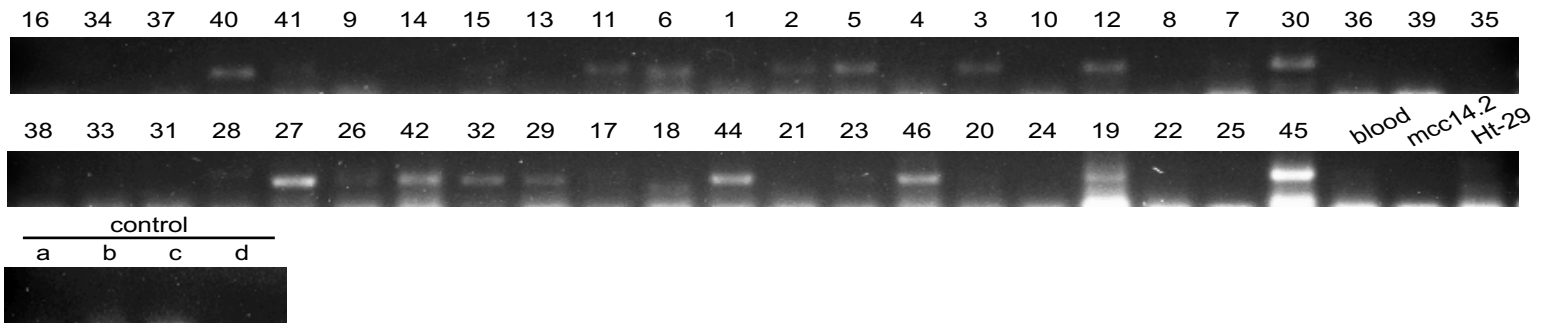
A



B



C



**Supplementary Figure 7 :** A, Schematic representation of *ATOH1* locus. White box indicate the *ATOH1* ORF and gray box the position of the CpG island. The primers are indicated as arrows. B, Detection of methylation at the *ATOH1* locus using the *ApaI* methylation sensitive restriction enzyme. PCR fragments generated using primers spanning the *ApaI* restriction site from *ApaI* restricted genomic DNA, presence of a band indicates methylation of the *Atoh1* CpG island. C, Detection of methylation using methylation sensitive PCR, upon bisulfite modification, presence of a band indicates methylation of the *Atoh1* CpG island..