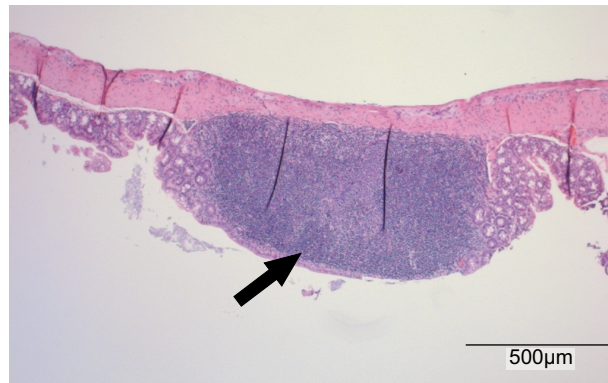


***Atonal homologue 1* is a tumour suppressor gene**

Bossuyt *et al.*

Supplementary figures



Supplementary figure 1: Gut associated lymphoid tissues in AOM-treated *Atoh1*^{wt} mice. The colons of AOM-treated *Atoh1*^{wt} mice showed large gut associated lymphoid tissues (GALT) that were macroscopically counted as polyps. 5x magnification of representative colonic GALTs. Galt indicated by an arrow.