

Figure 3: 2R:8420990-8421599 vg

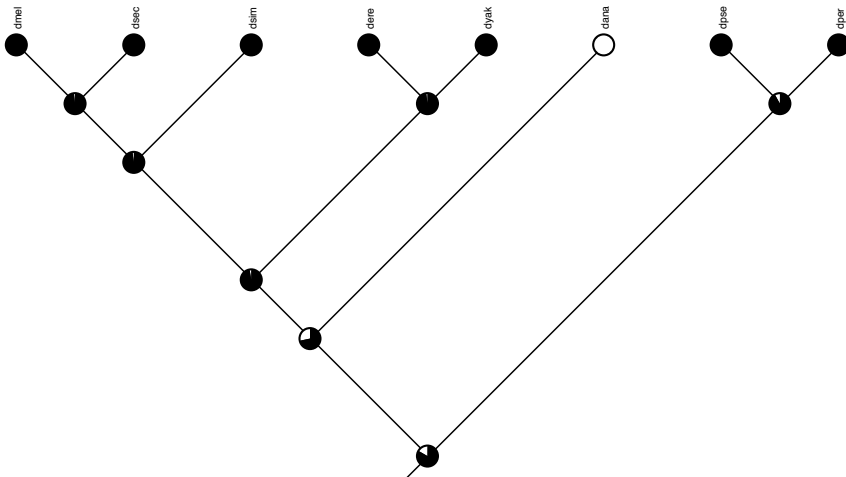


Figure 4: 2R:8881080-8881779 CG10814

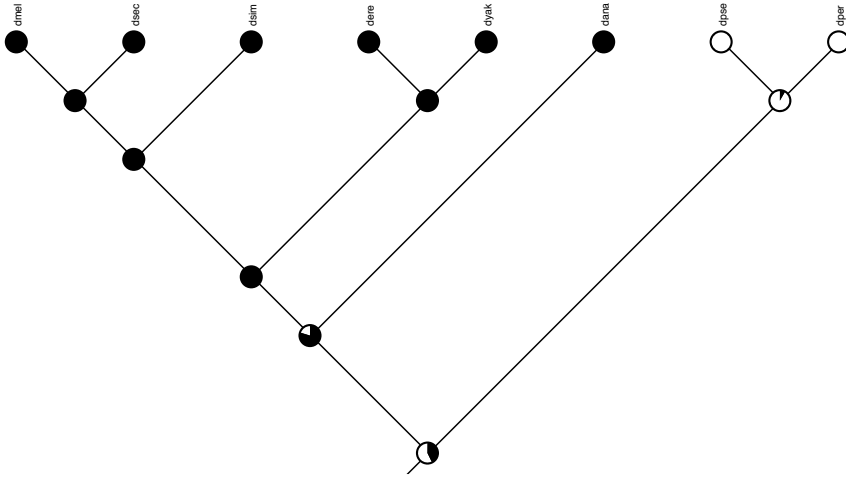


Figure 5: 2R:10473680-10474479 aPKC

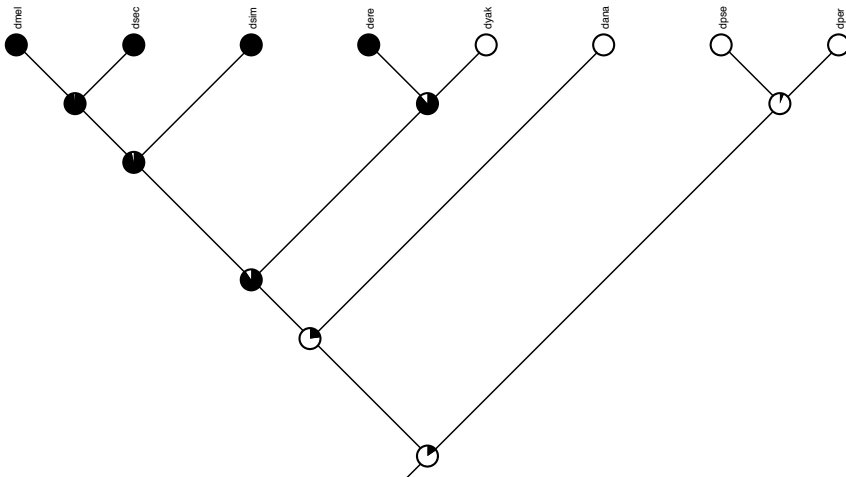


Figure 6: 2R:11793210-11793899 cato

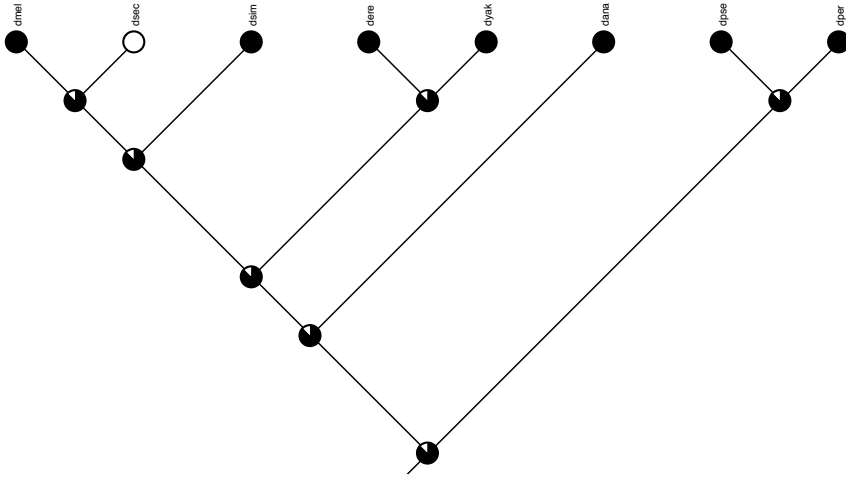


Figure 7: 2R:14793480-14794009 rib

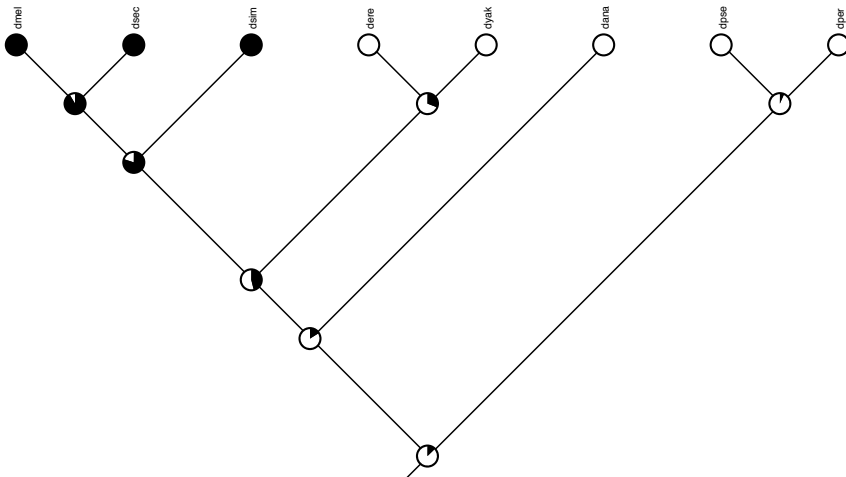


Figure 8: 2R:15953920-15954439 CG33041

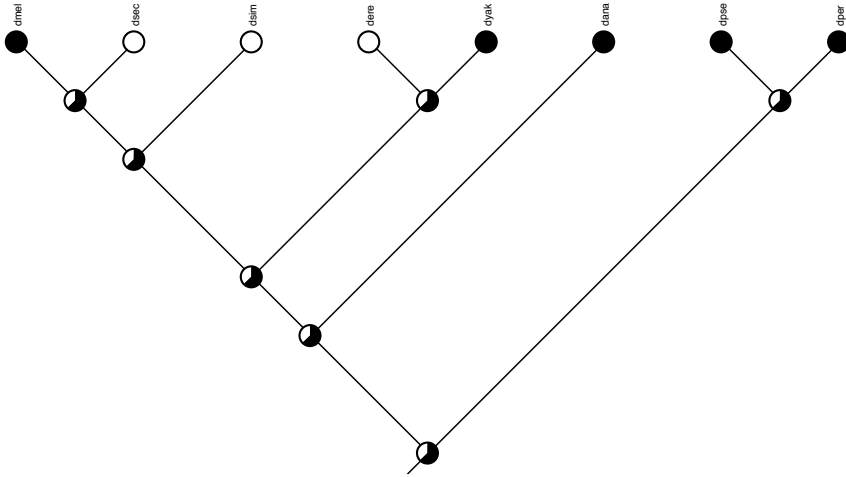


Figure 9: 2R:16738130-16738749 CG18375

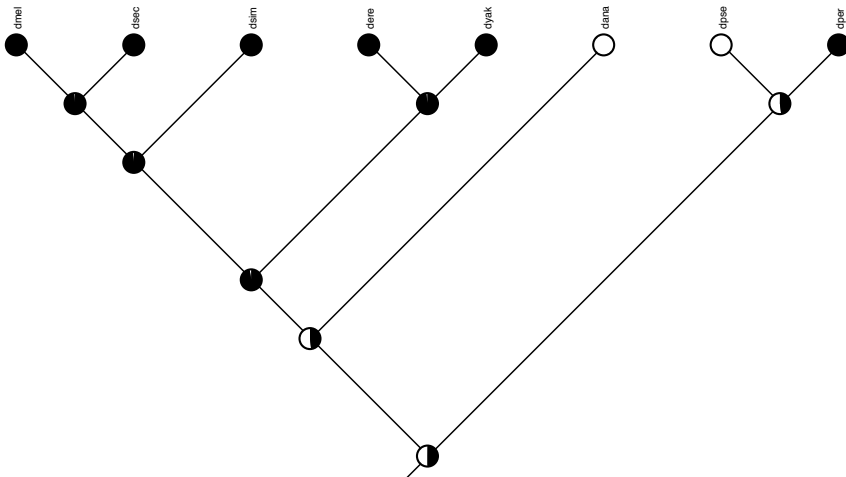


Figure 10: 2R:16861560-16862379 cv-2

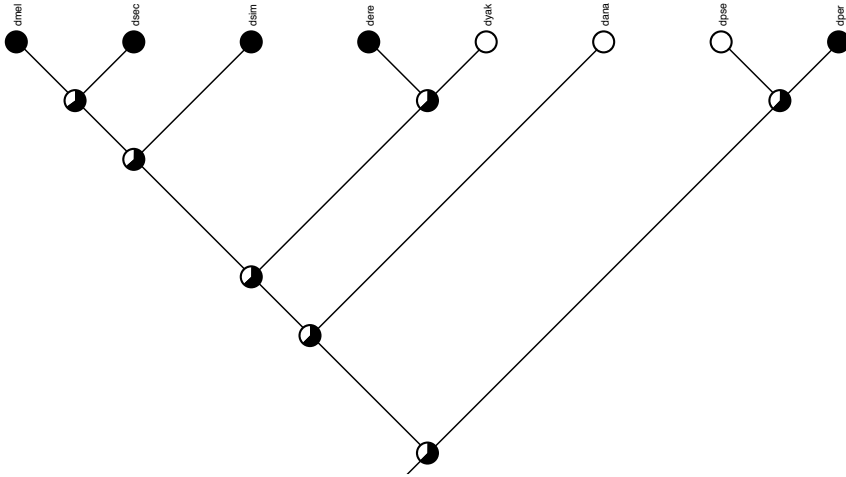


Figure 11: 2R:18506210-18506809 CG9896

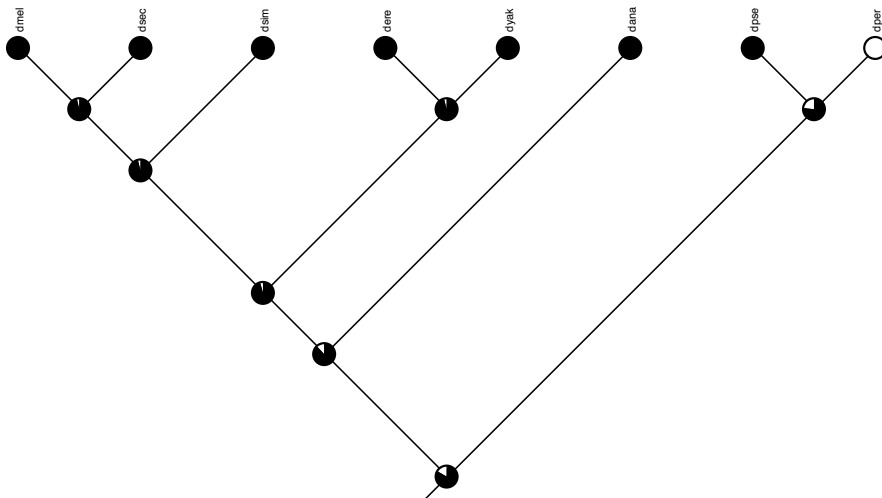


Figure 12: 2L:2093620-2094269 dpr3

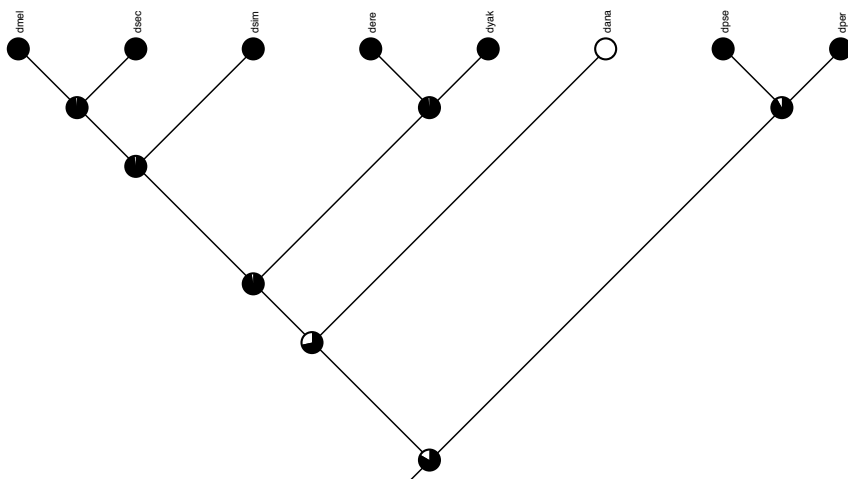


Figure 13: 2R:19805730-19806469 CG3394

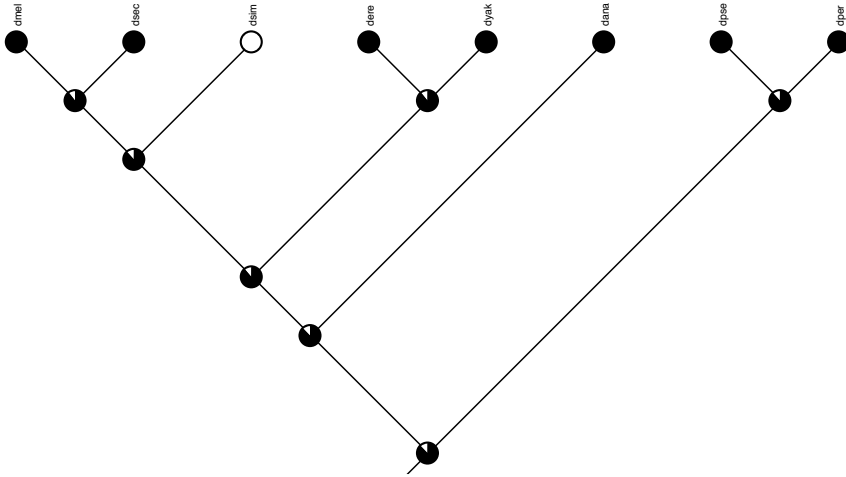


Figure 14: 2R:20353010-20353629 CG3650

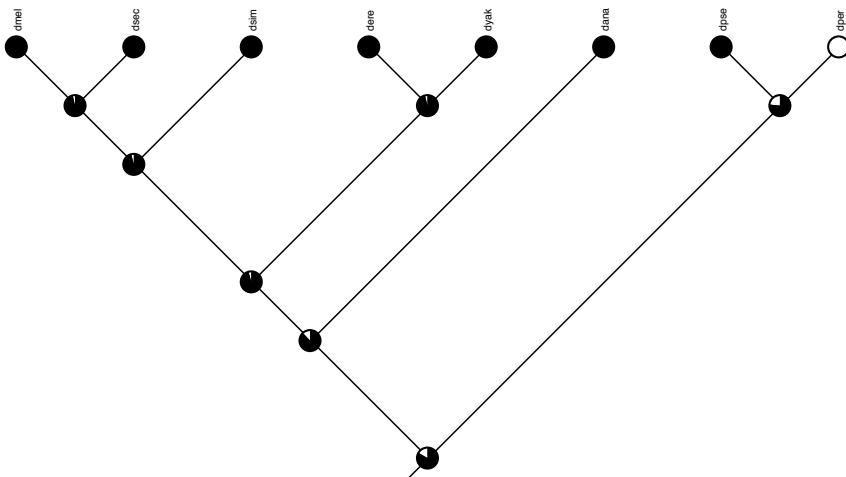


Figure 15: 3L:1962500-1963109 CG1139



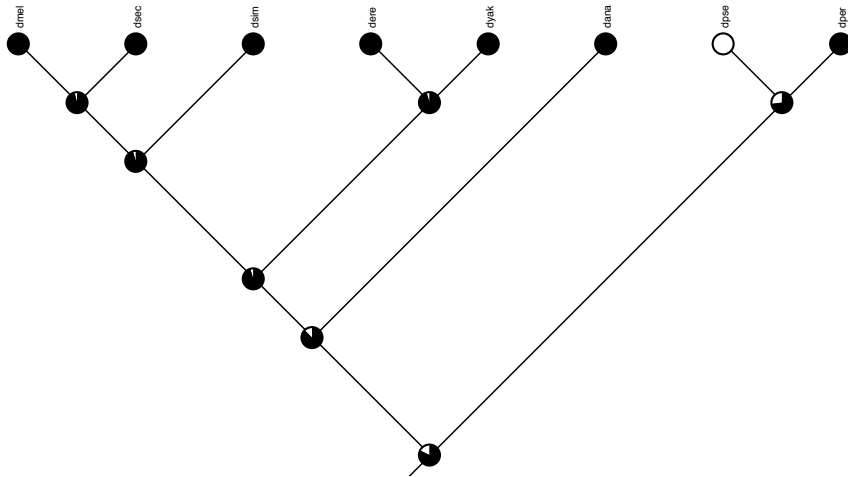


Figure 16: 3L:6090680-6091459 Ets65A

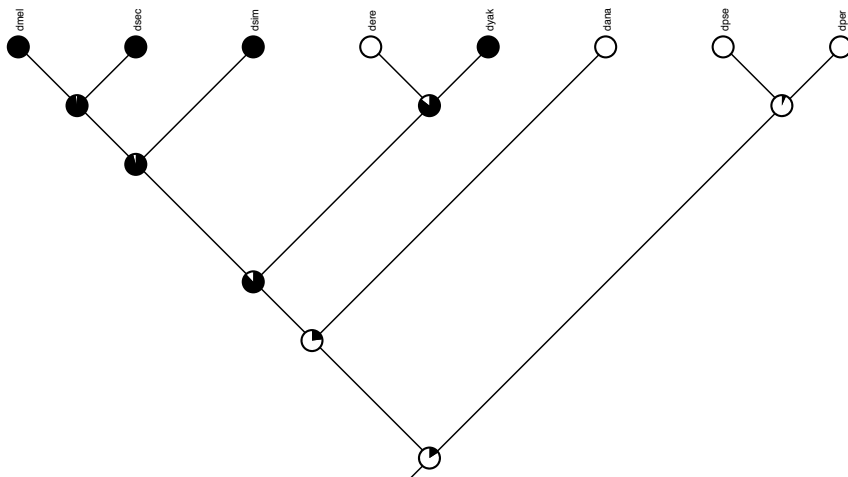


Figure 17: 3L:6788690-6789399 vvl



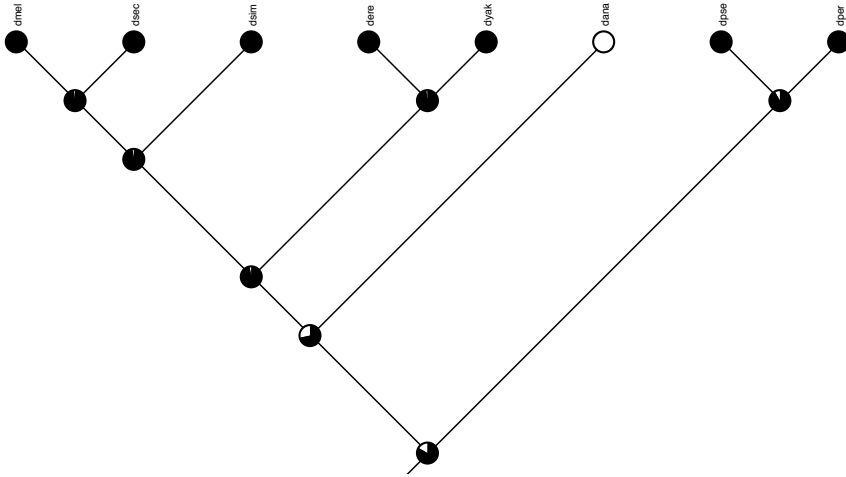


Figure 20: 3L:17094070-17094869 CG32169

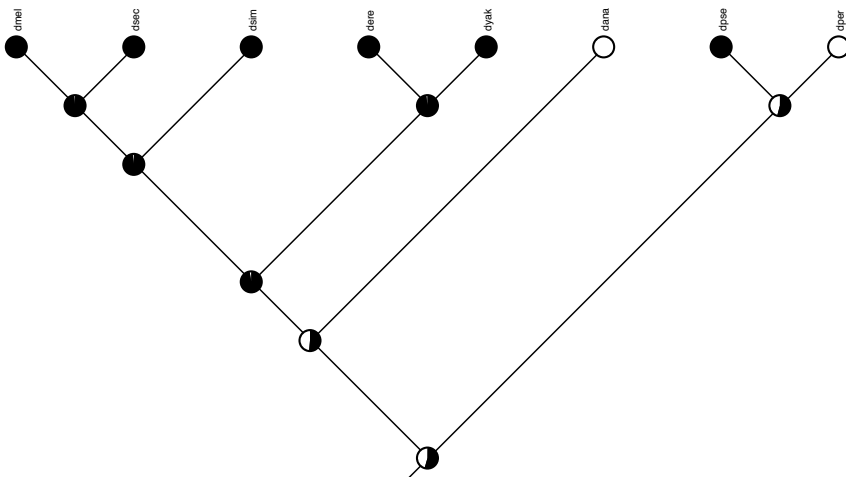


Figure 21: 3L:17100230-17100989 CG32169

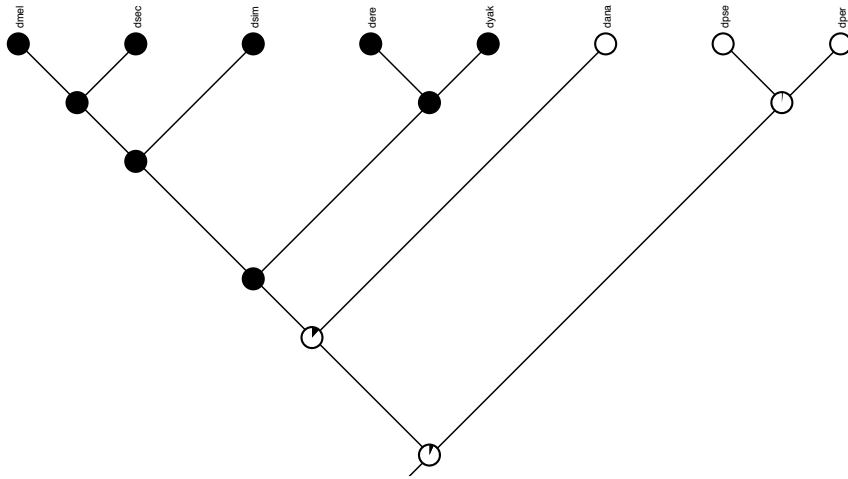


Figure 22: 3L:17499420-17500219 Nedd4

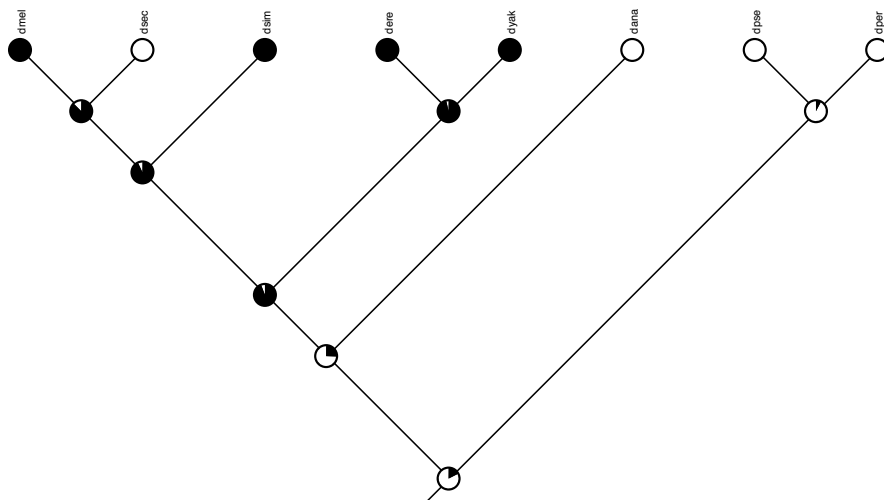


Figure 23: 2L:12011160-12011919 Rh5

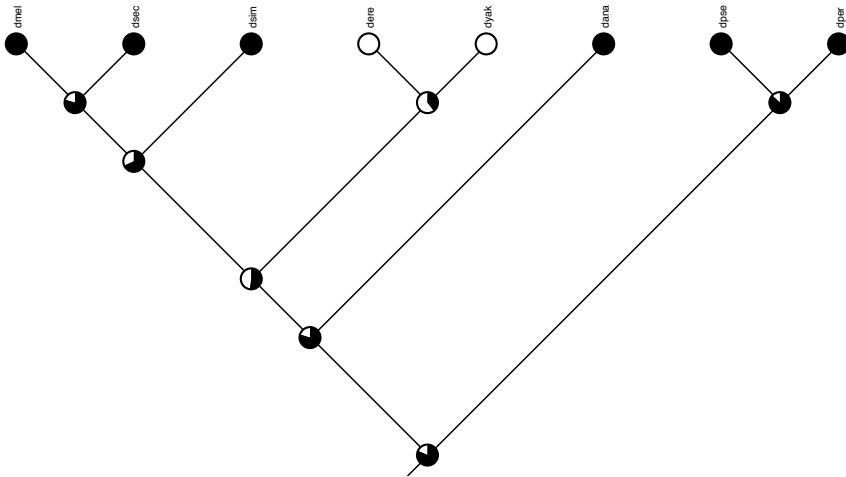


Figure 24: 3L:17650650-17651389 Ccn

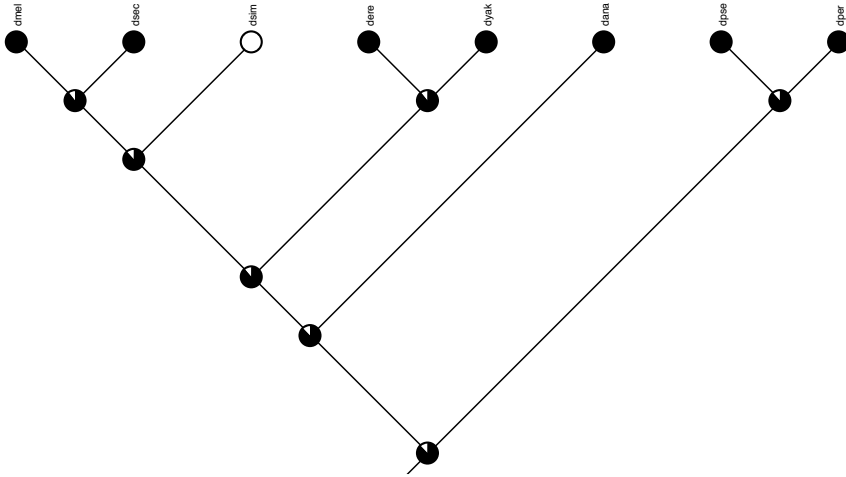


Figure 25: 3L:19499760-19500609 CG9299

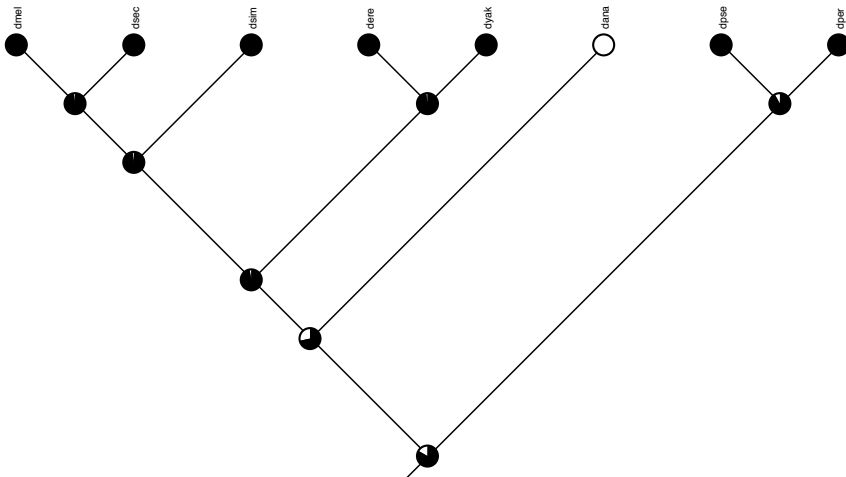


Figure 26: 3L:20629150-20629879 kni

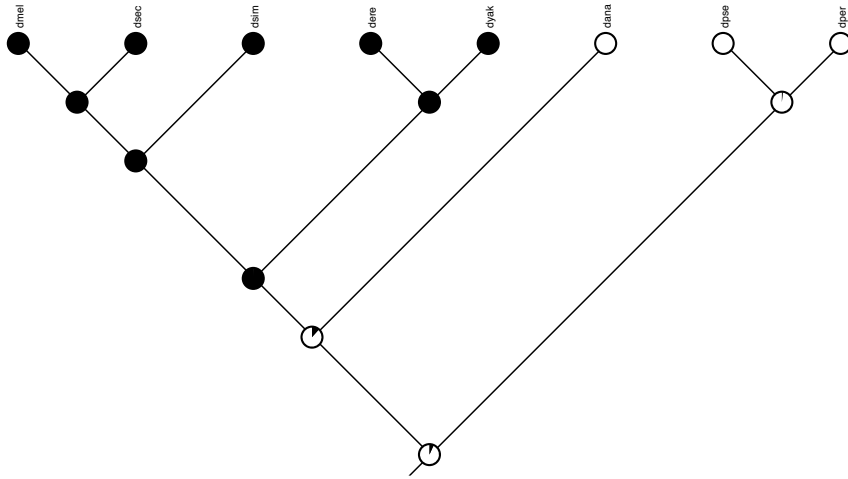


Figure 27: 3L:22249520-22250419 Ten-m

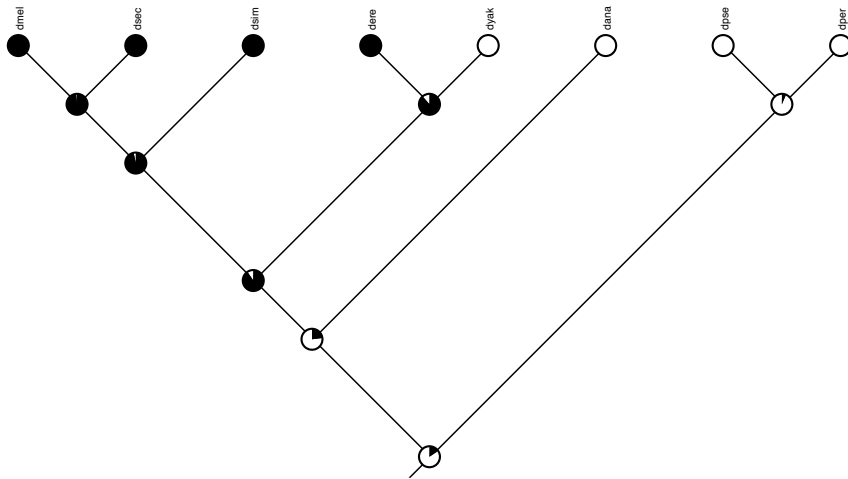


Figure 28: 3R:1108260-1108759 l(3)82Fd

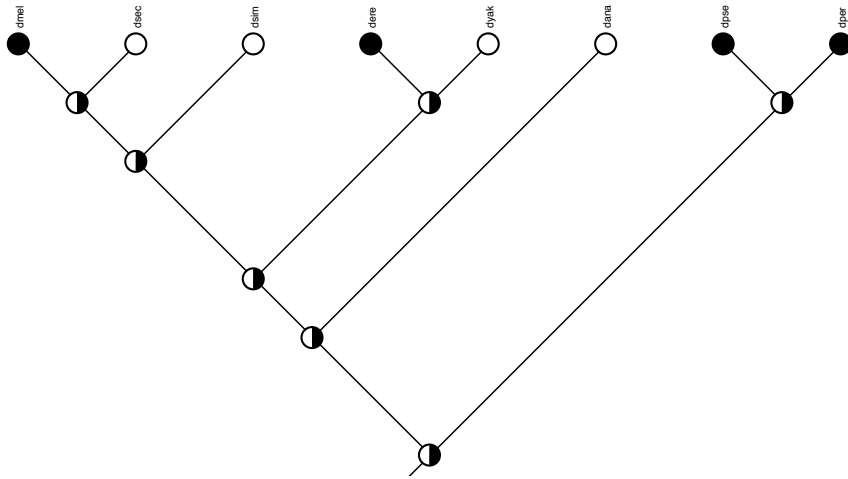


Figure 29: 3R:2356480-2357099 dpr11

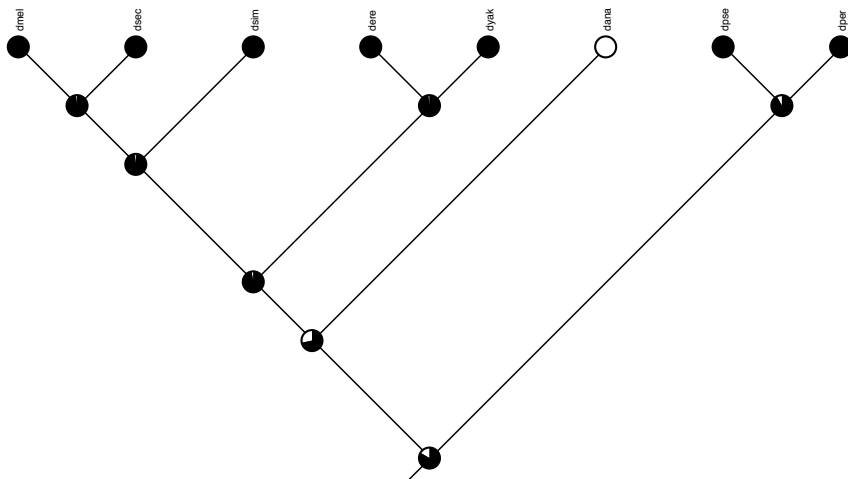


Figure 30: 3R:2826030-2826889 Antp



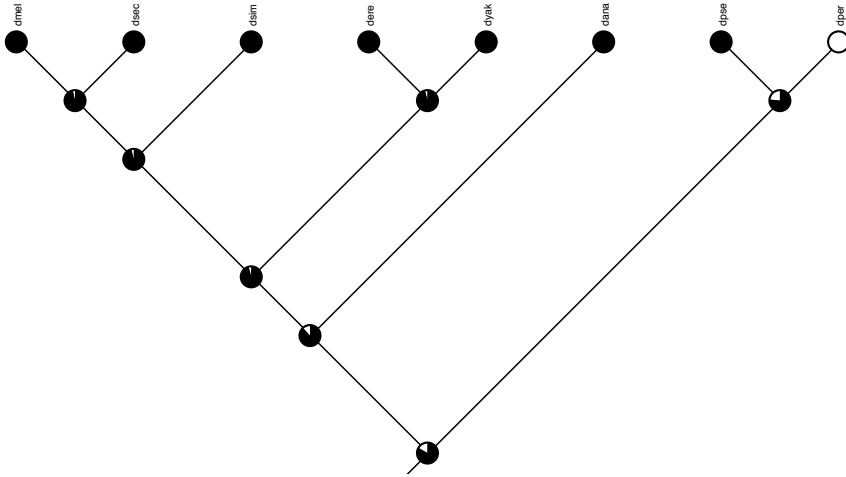


Figure 31: 3R:3414450-3415189 CG32465

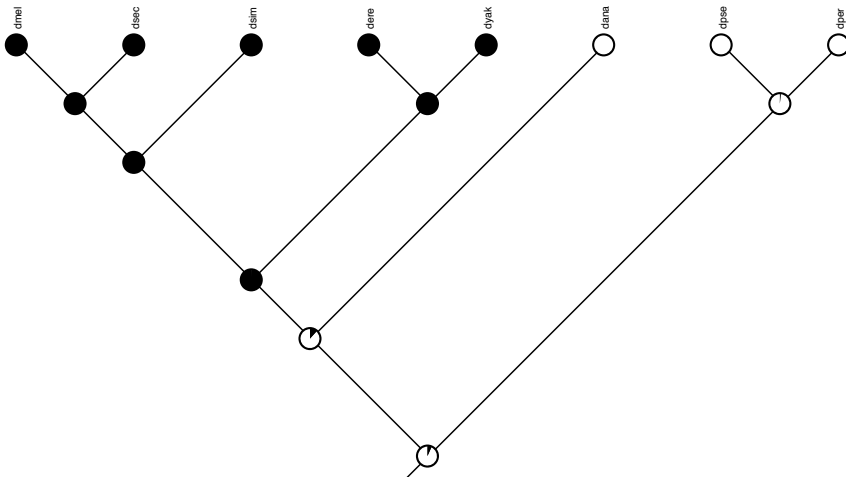


Figure 32: 3R:4528660-4529189 CG8112

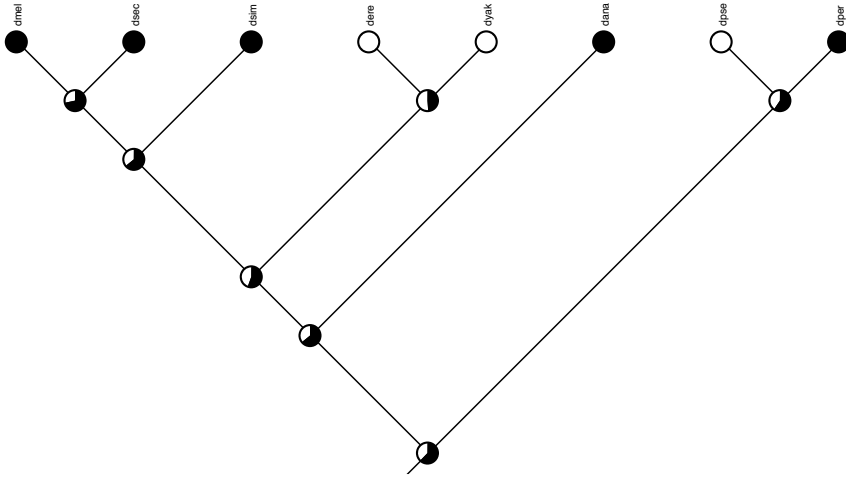


Figure 33: 3R:5058020-5058839 pum

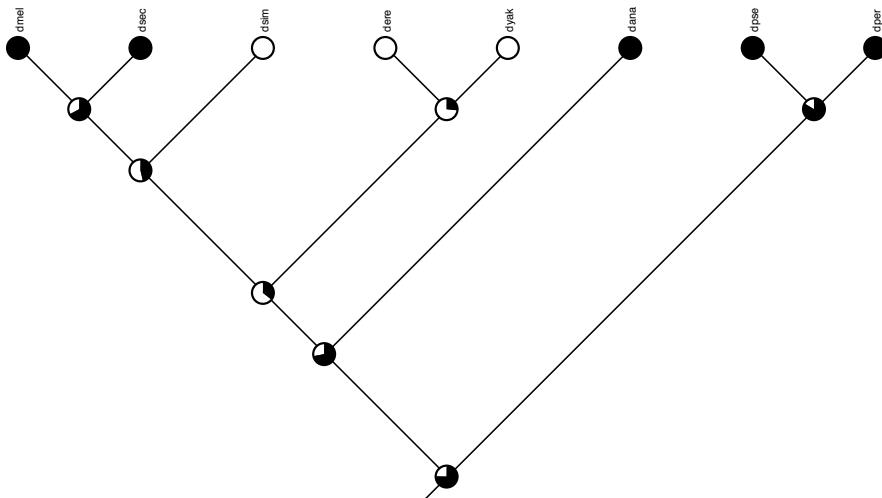


Figure 34: 2L:12986910-12987539 CG5075

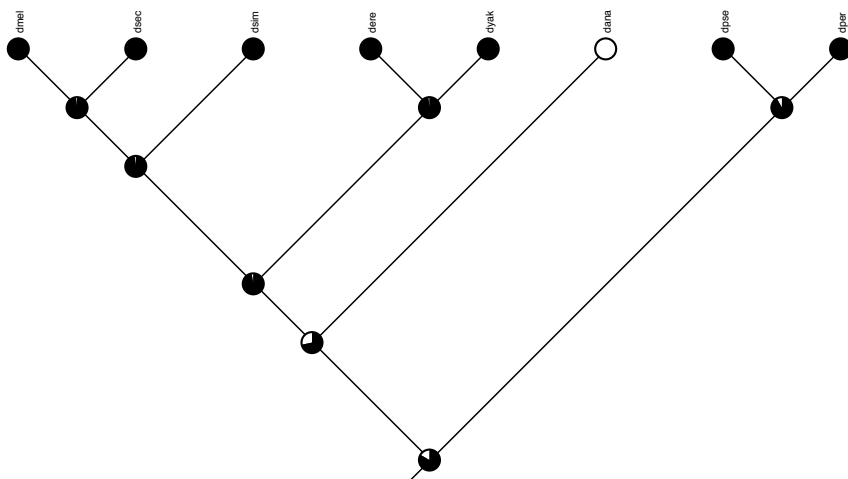


Figure 35: 3R:7296770-7297279 CG17230

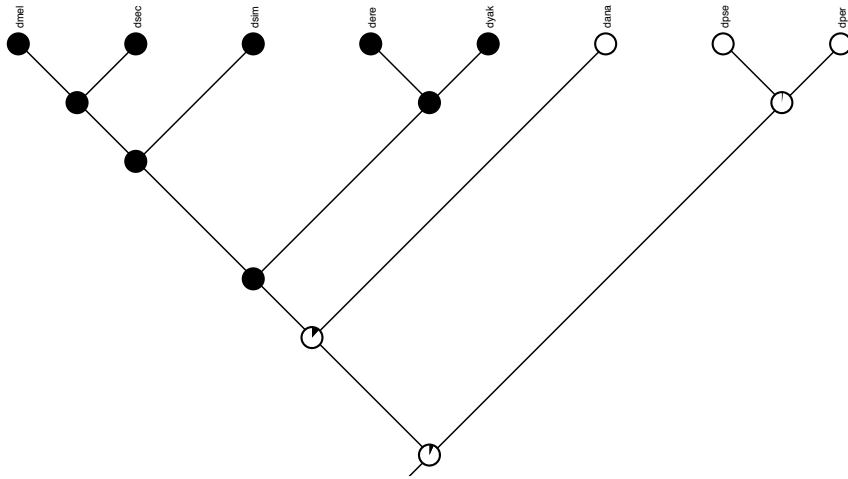


Figure 36: 3R:8104440-8105249 svp

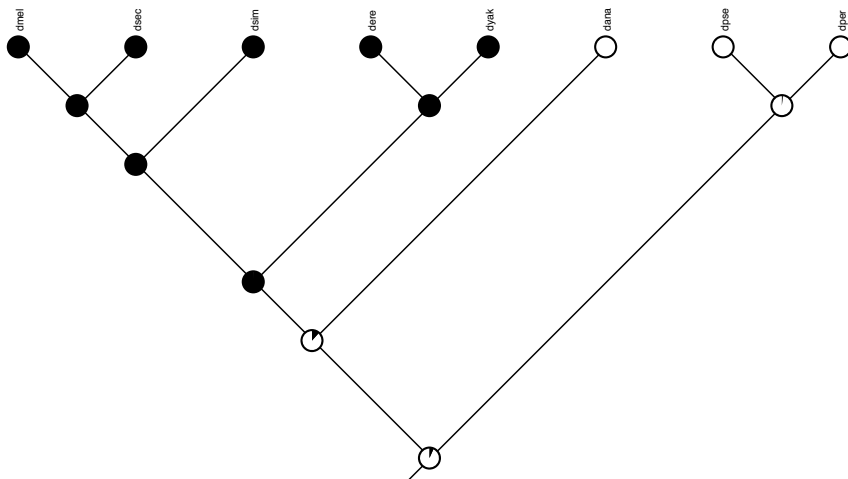


Figure 37: 3R:8837630-8838559 CtBP

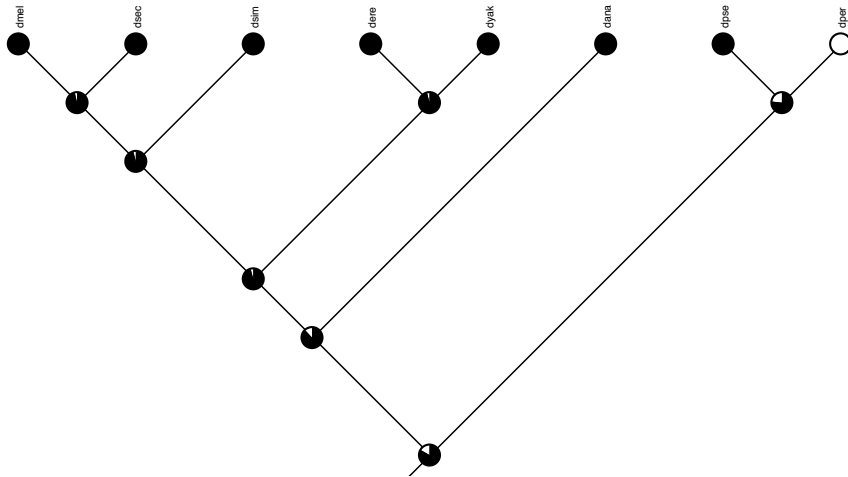


Figure 38: 3R:10604850-10605369 CG3563

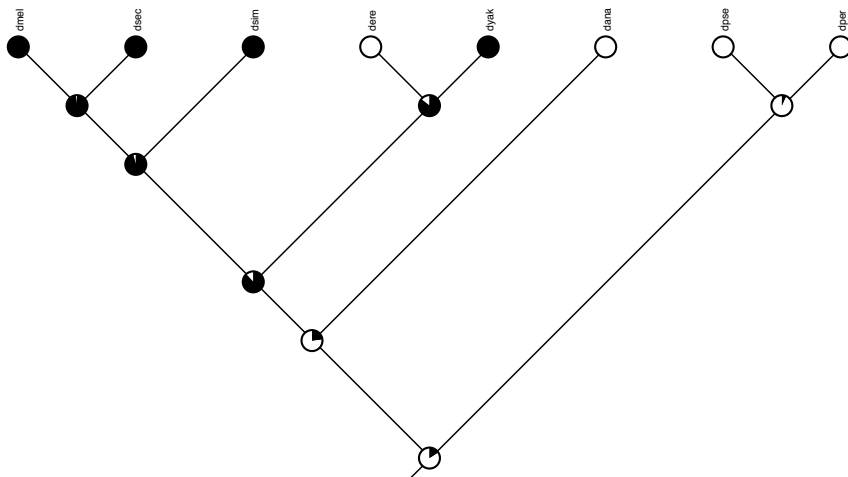


Figure 39: 3R:11222160-11222899 CG31302

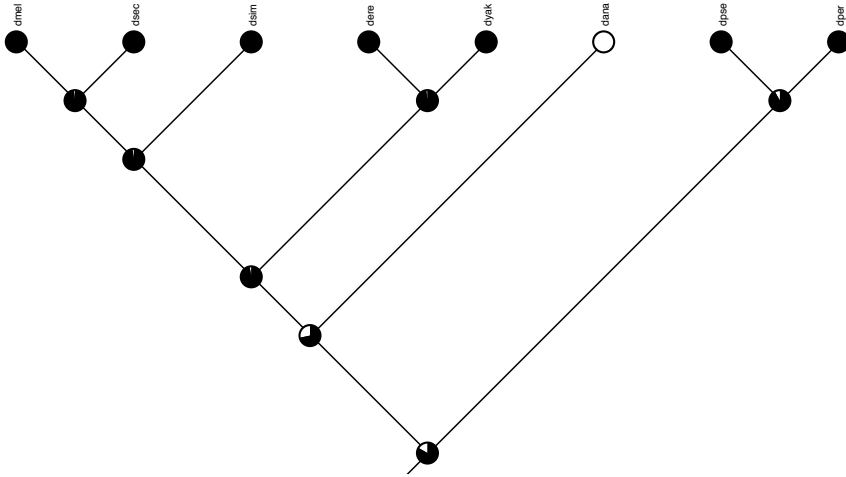


Figure 40: 3R:11947050-11947549 Sb

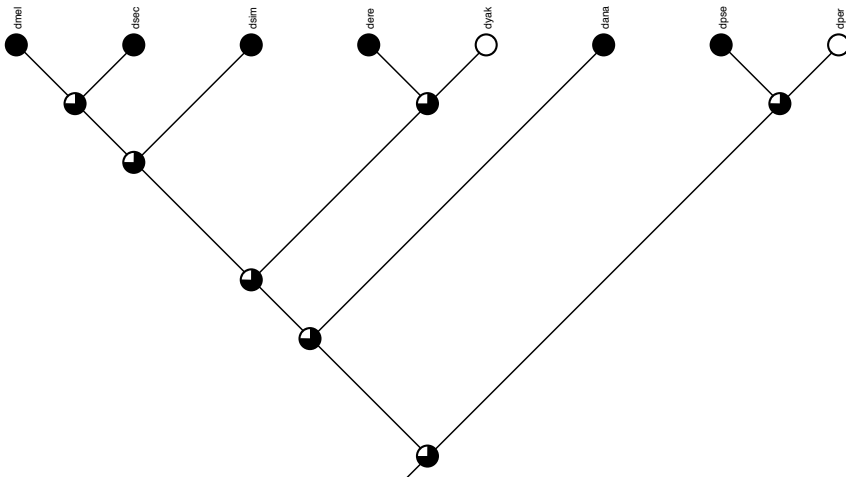


Figure 41: 3R:14524740-14526129 CG7710

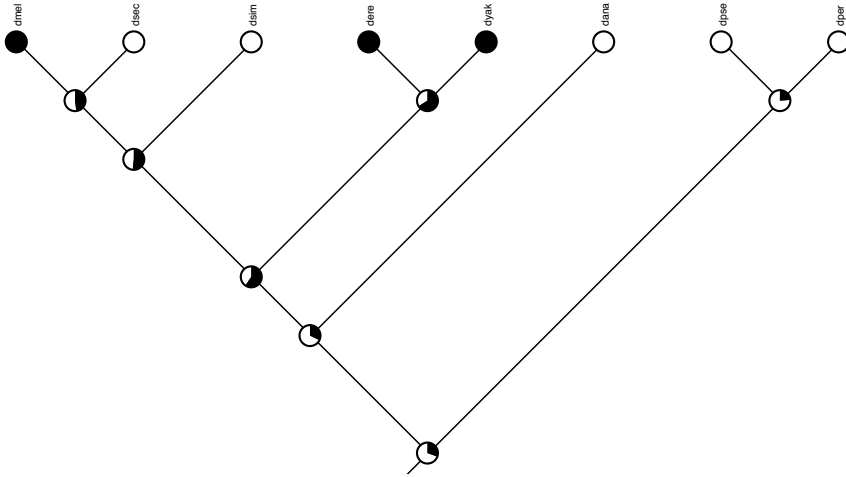


Figure 42: 3R:14538050-14538809 VChT

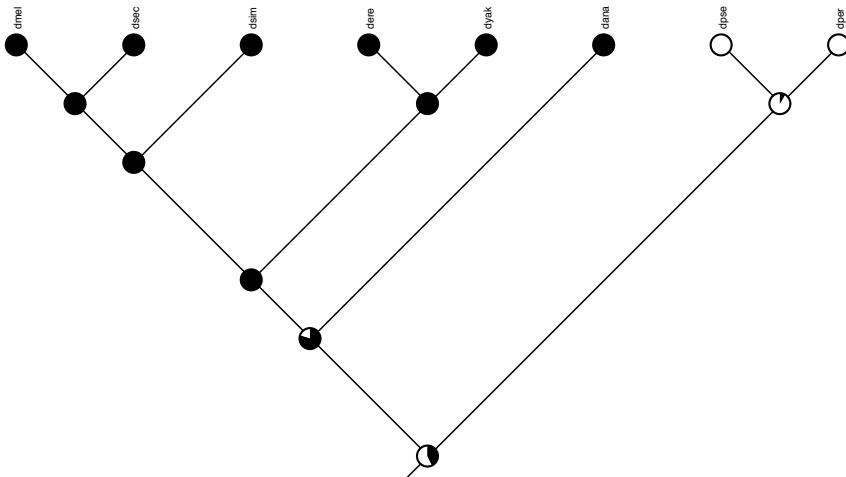


Figure 43: 3R:17271900-17272449 lbe

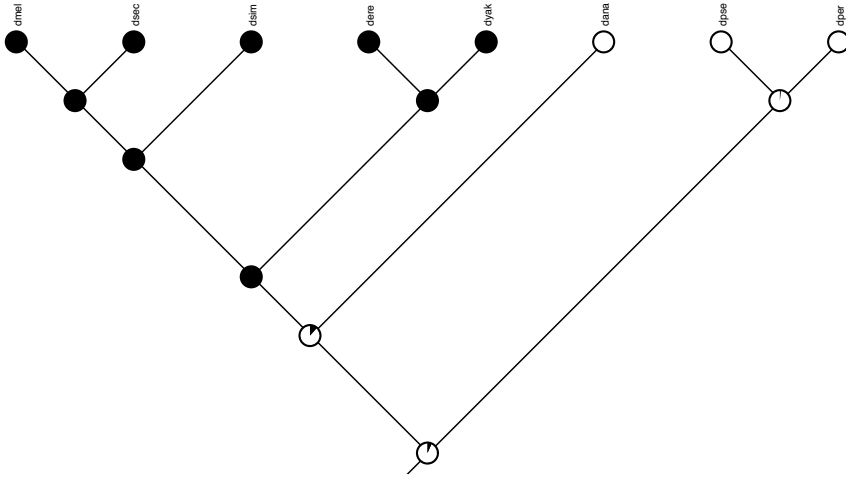


Figure 44: 3R:22415140-22415789 scrib

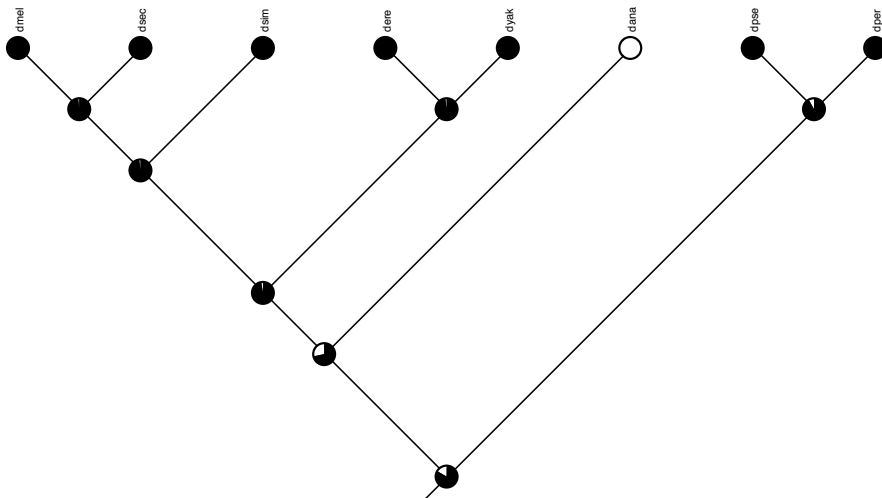


Figure 45: 2L:13098100-13098639 CG5142



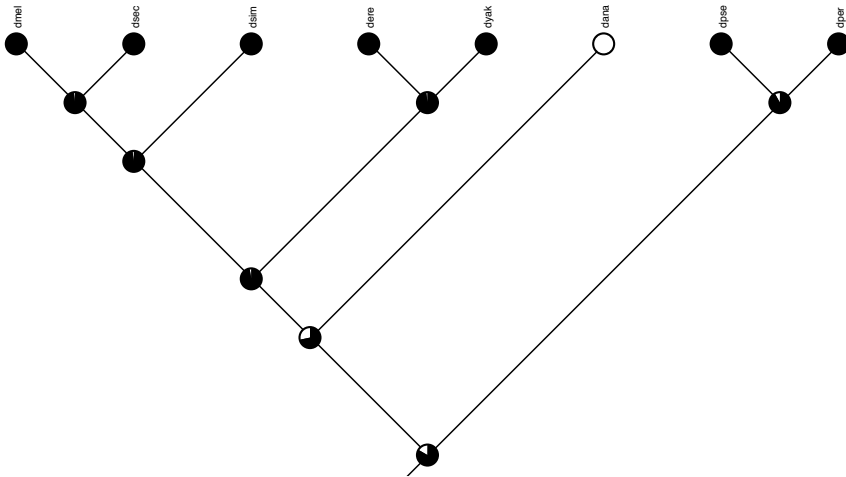


Figure 46: 3R:23989520-23990089 CG12425

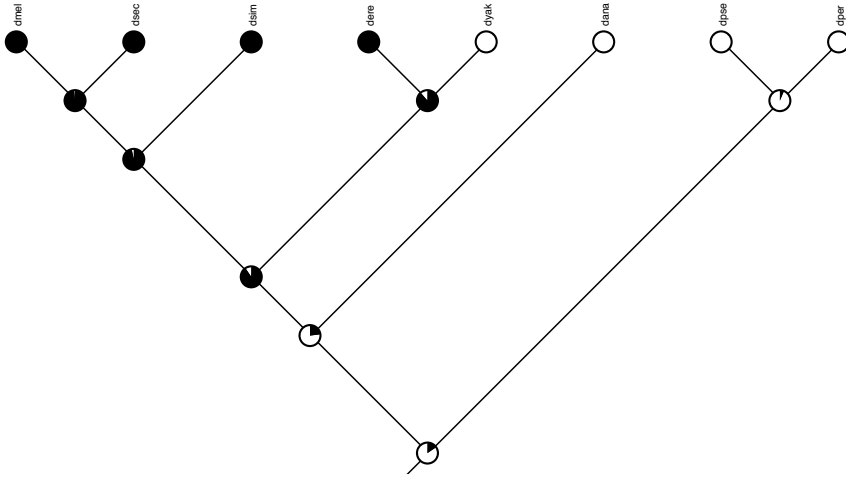


Figure 47: 3R:24069750-24070279 CG12852

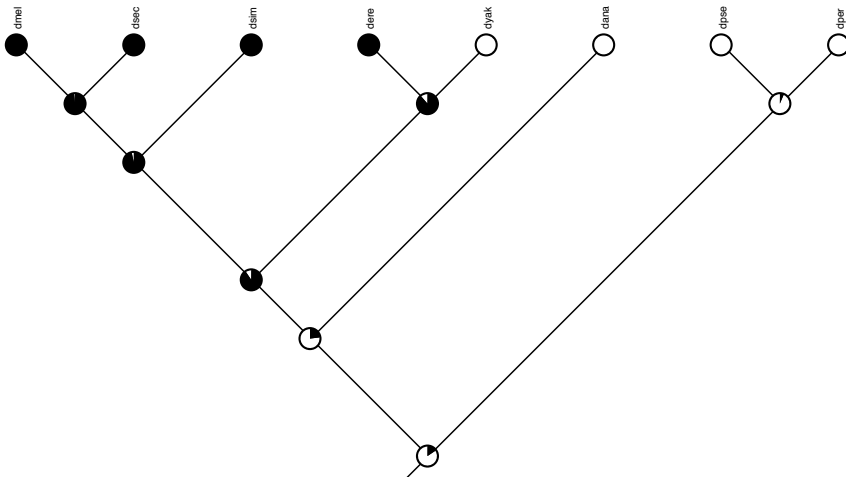


Figure 48: 3R:24074310-24074839 CG12852

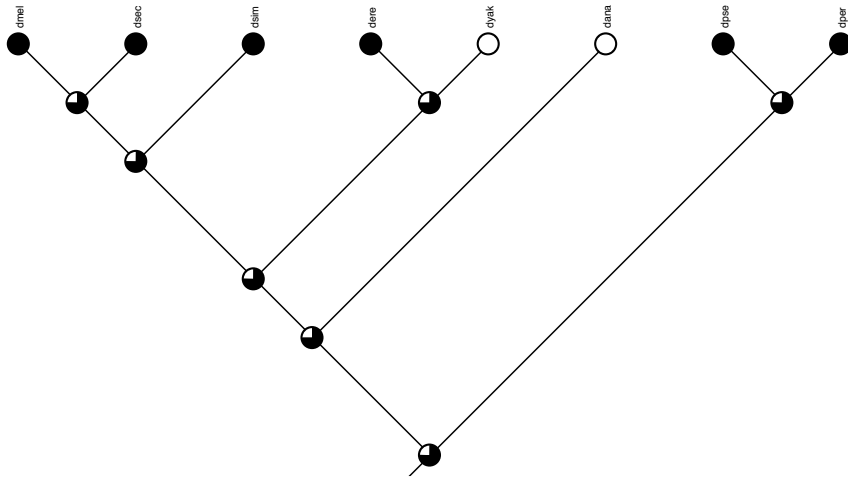


Figure 49: 3R:26562800-26563559 CG15543

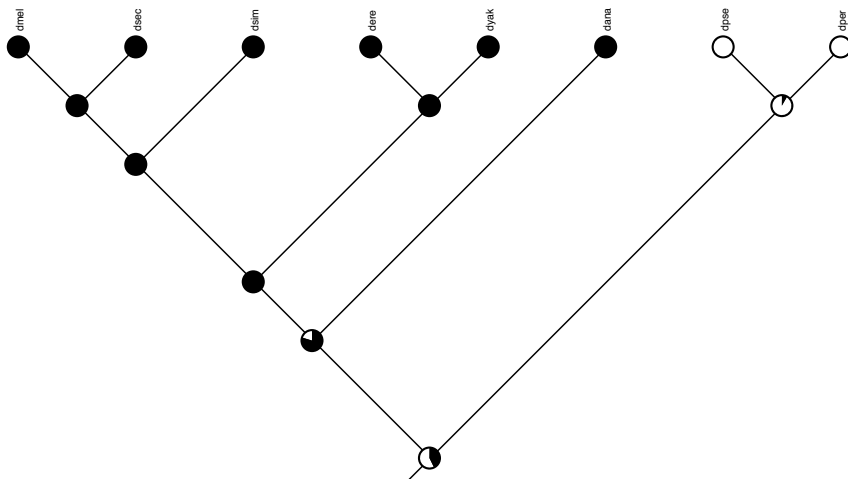


Figure 50: 3R:27363230-27363909 CG1499



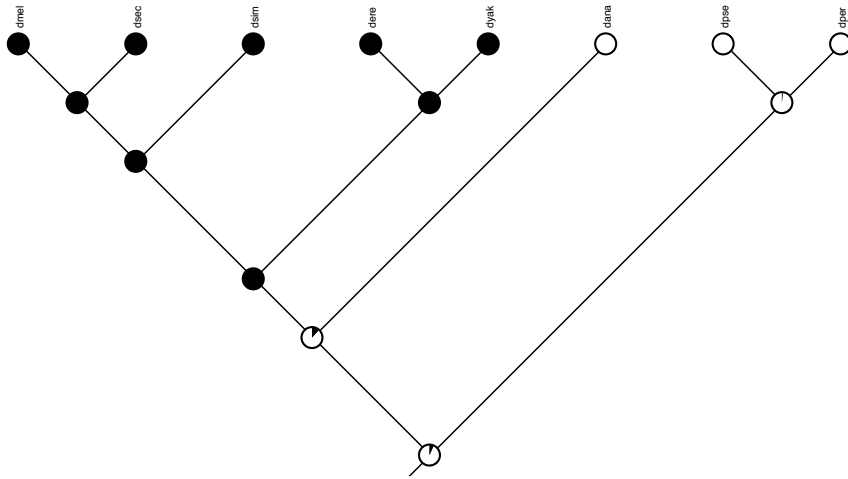


Figure 53: X:8041710-8042469 sdt

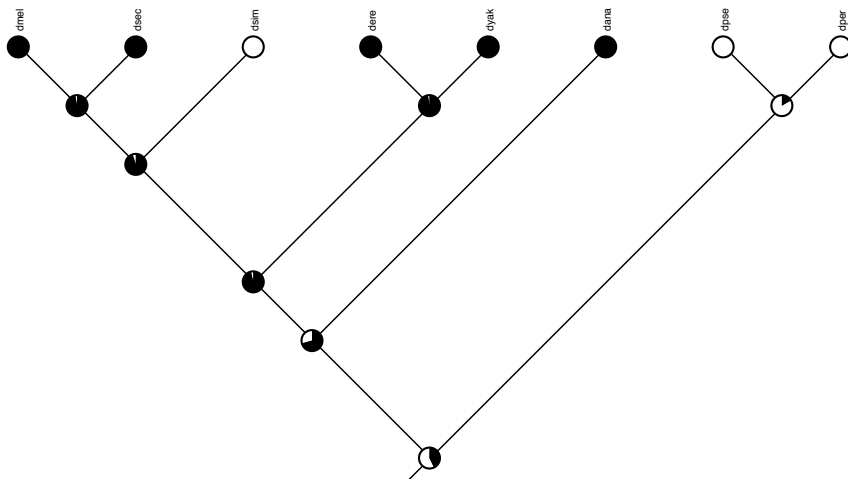


Figure 54: X:8171430-8172269 nAcRalpha-7E

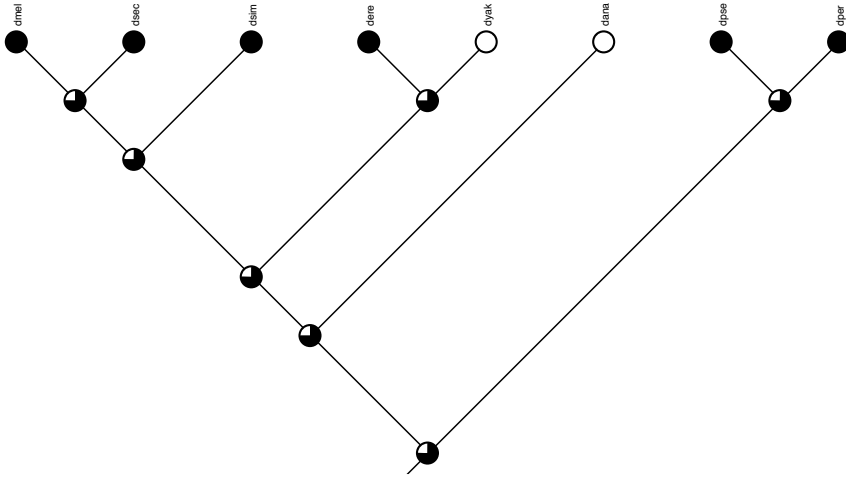


Figure 55: X:8324250-8324869 CG33223

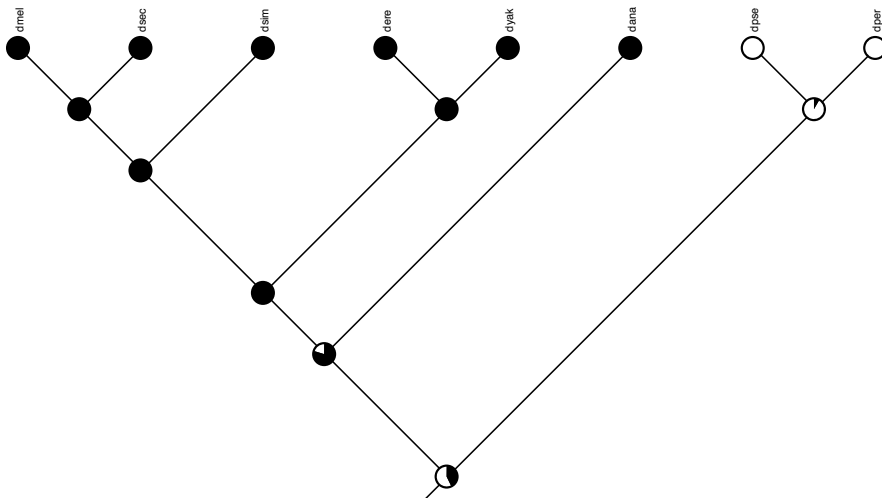


Figure 56: 2L:16982270-16983139 beat-IIIb

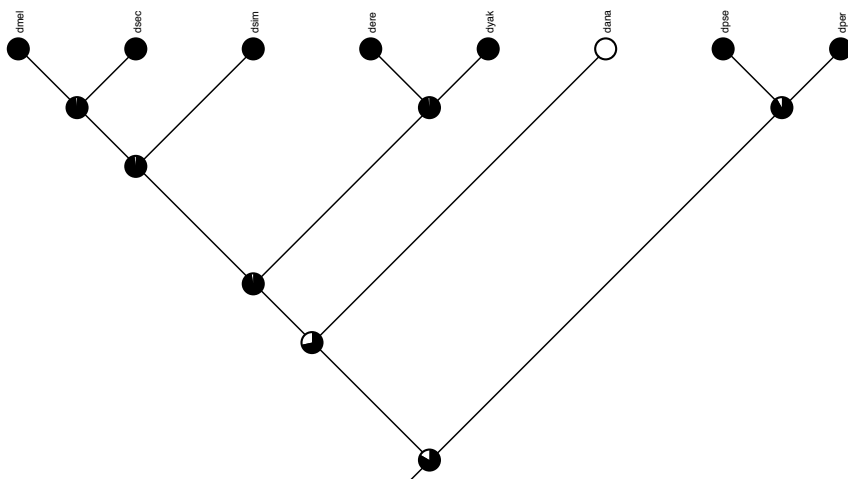


Figure 57: X:8769530-8770209 rdgA

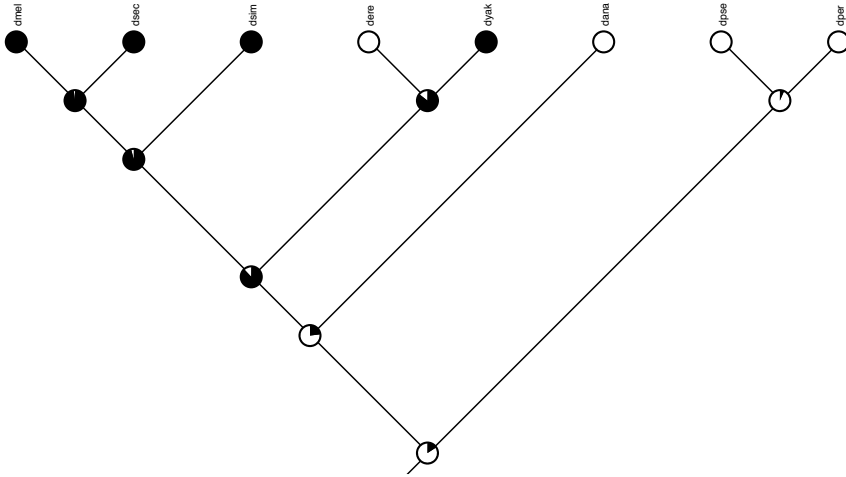


Figure 58: X:9430870-9431389 Hex-A

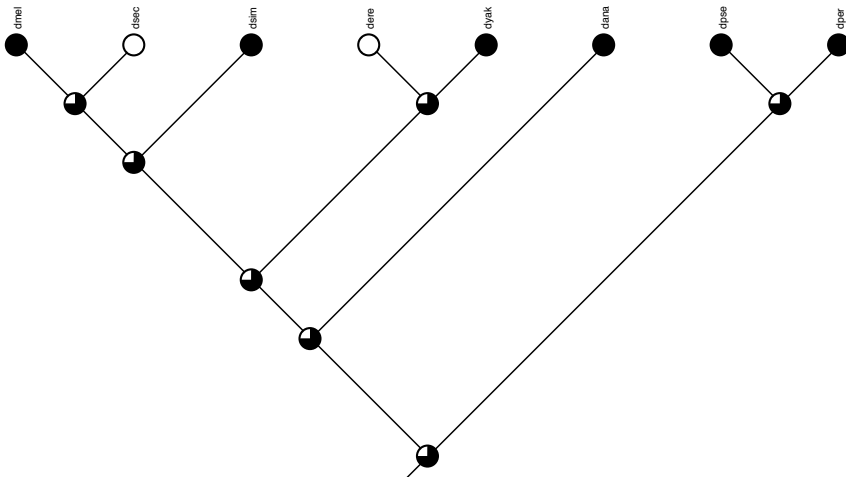


Figure 59: X:9691870-9692389 CG32698



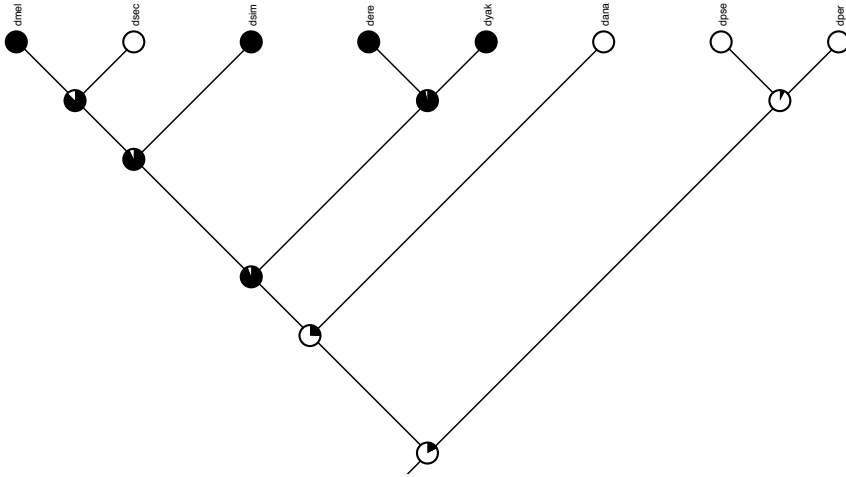


Figure 60: X:9767360-9768219 Idgf4

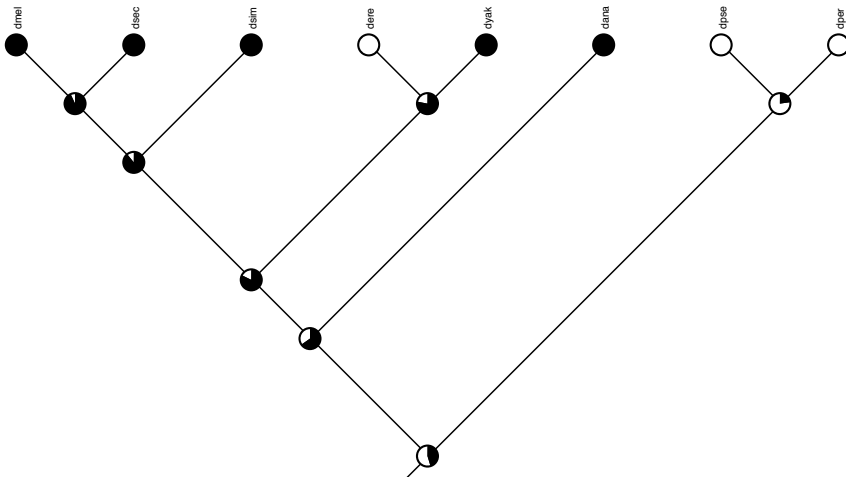


Figure 61: X:10862540-10863149 CG12626

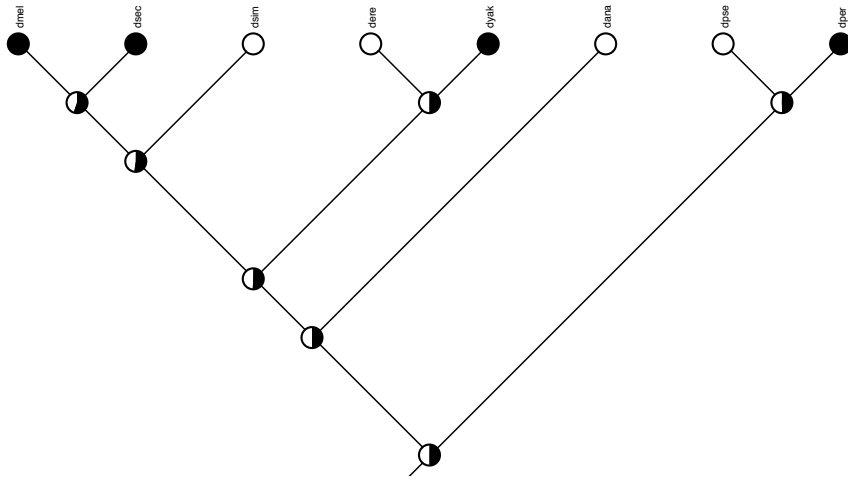


Figure 62: X:10948390-10949239 CG1961

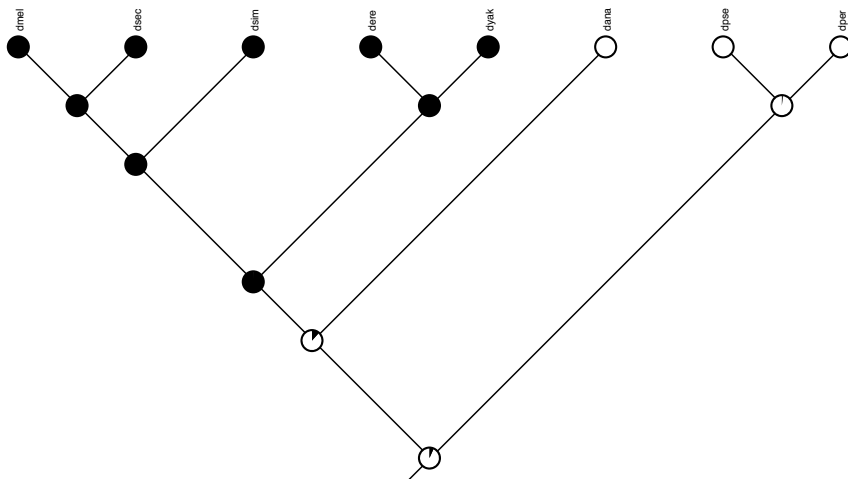


Figure 63: X:11097230-11098069 CG15198

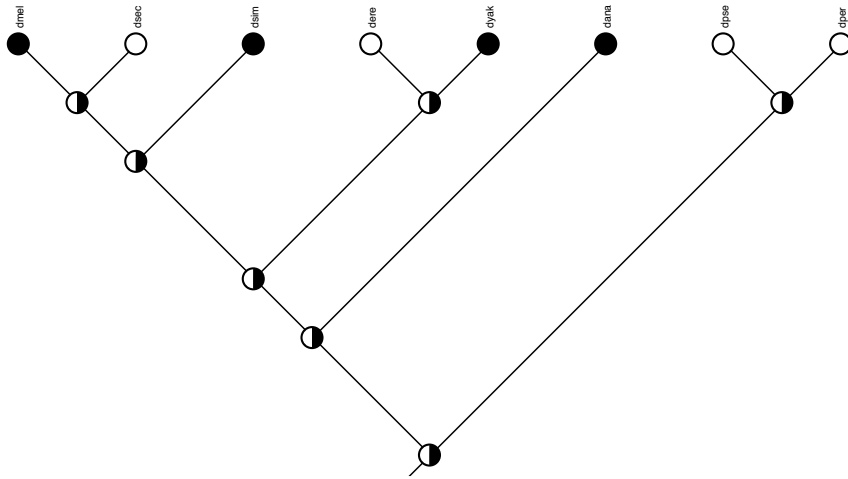


Figure 64: X:11974910-11975689 CG2750

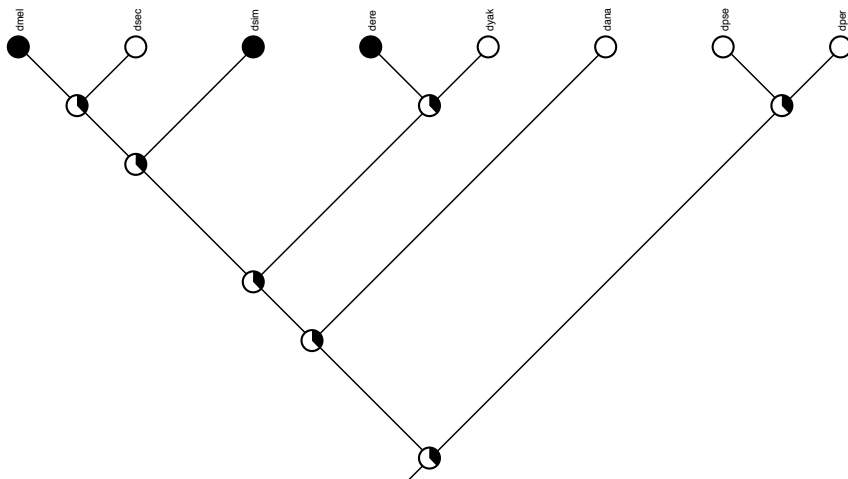


Figure 65: X:12449570-12450279 CG2543



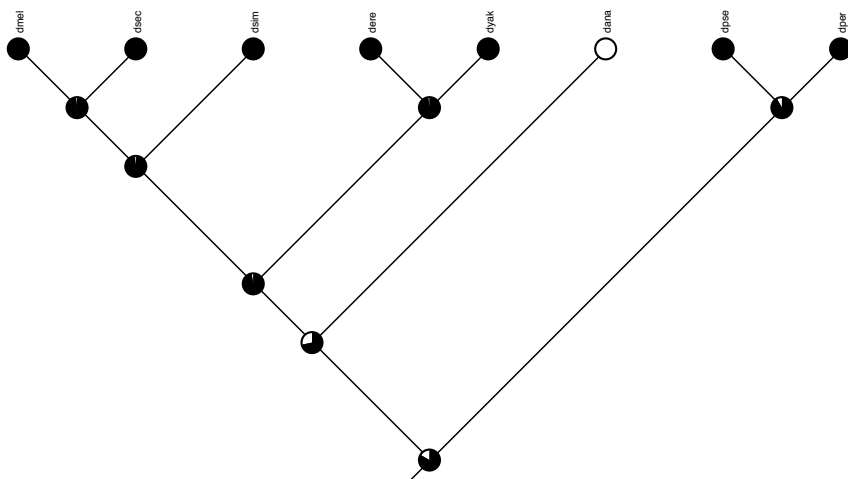


Figure 68: X:17191780-17192529 B-H2

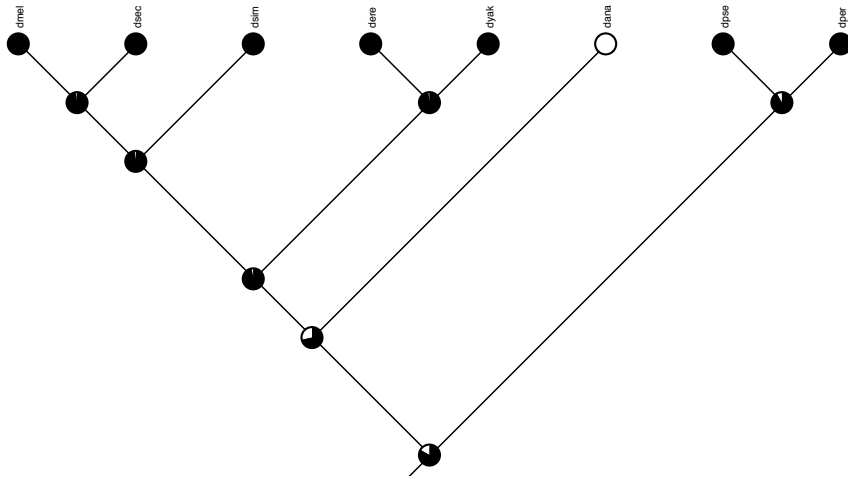


Figure 69: X:17216120-17216839 B-H1

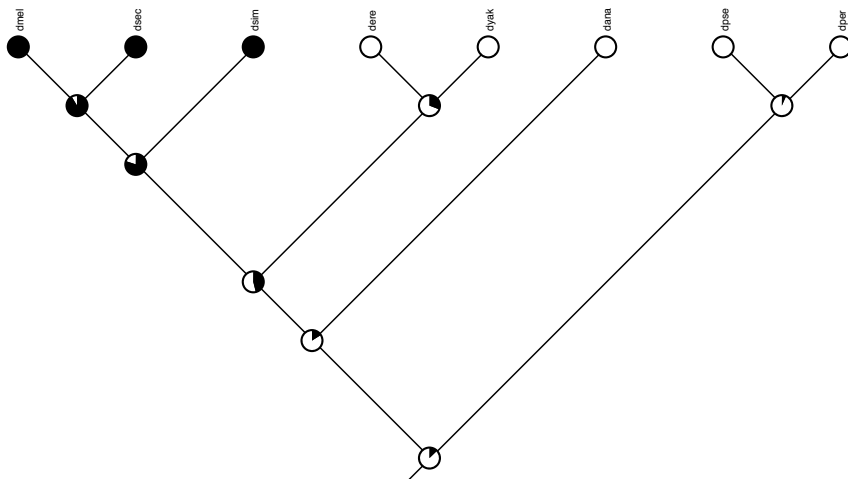


Figure 70: X:18757770-18758559 CG32541

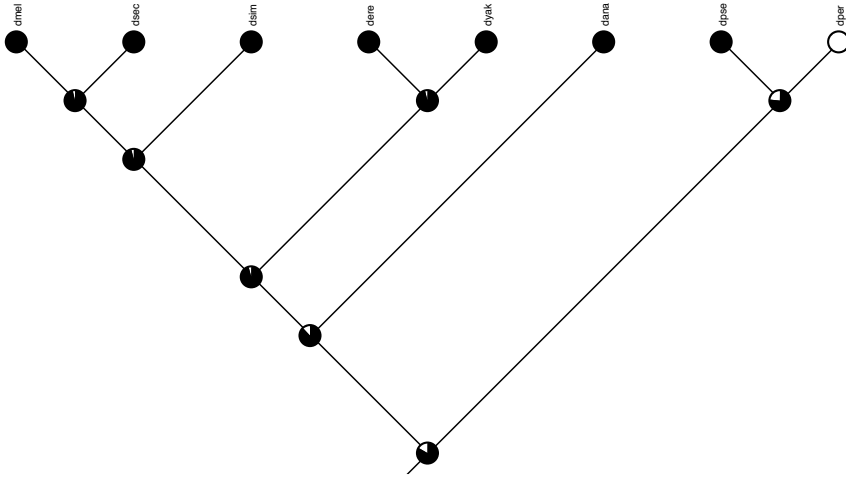


Figure 71: X:20825720-20826239 CG10998

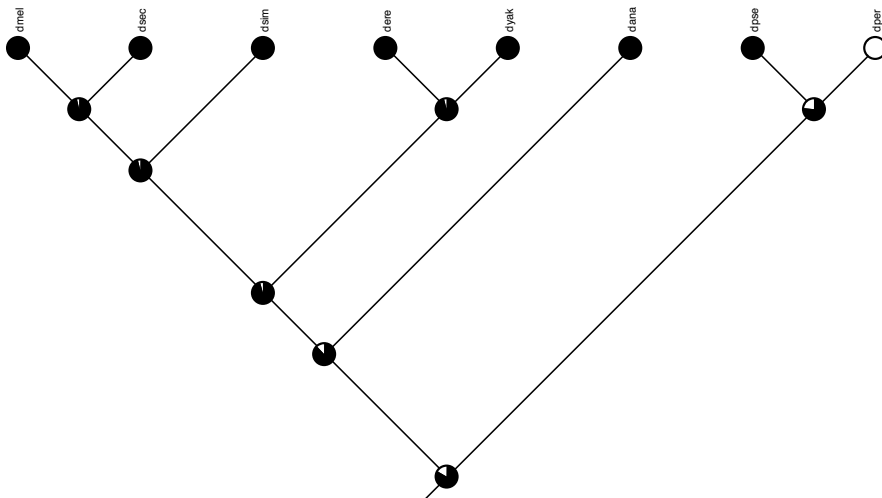


Figure 72: 2R:5490190-5491169 eve

