

Correction: Regulation of Muscle Fiber Type and Running Endurance by PPAR δ

In *PLoS Biology*, volume 2, issue 10:

Regulation of Muscle Fiber Type and Running Endurance by PPAR δ .

Wang YX, Zhang CL, Yu RT, Cho HK, Nelson MC, et al.

DOI: 10.1371/journal.pbio.0020294

The following competing interest should have been indicated in the above research article. R. M. Evans wishes to acknowledge a consulting relationship with Ligand Pharmaceuticals. Under a licensing agreement with GlaxoSmithKline, Ligand receives milestone payments on the development of GW501516, a PPAR δ -specific drug used in this study. For clarification, no materials or support were received from either company, and no agreements were in place concerning the execution or publication of this work.

This correction note may be found online at DOI: 10.1371/journal.pbio.0030061.

Published January 18, 2005

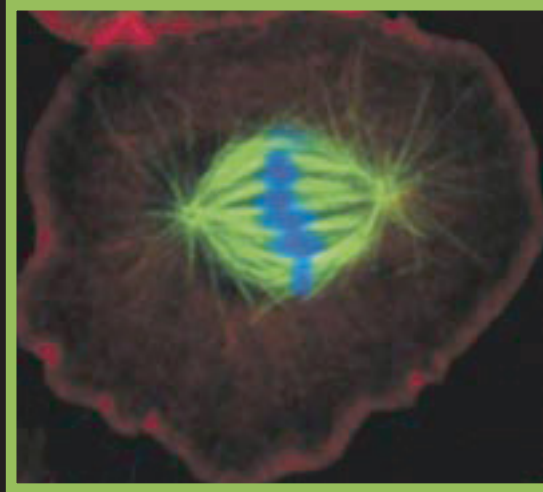
Copyright: © 2005 Public Library of Science. This is an open-access article distributed under the terms of the Creative Commons Attribution License, which permits unrestricted use, distribution, and reproduction in any medium, provided the original work is properly cited.

Citation: (2005) Correction: Regulation of muscle fiber type and running endurance by PPAR δ . *PLoS Biol* 3(1): e61.



MBL

Marine Biological Laboratory • Woods Hole • Massachusetts



Physiology Course 2005

An Interdisciplinary Course in Modern Cell Biology Using Microscopic, Biochemical and Computational Approaches

June 11 - July 30, 2005

Course Directors/Instructors:

Ron Vale (UCSF)
Tim Mitchison (Harvard)

Additional Instructors:

Naama Barkai (Weizmann Institute, Israel)
Marileen Dogterom (FOM Institute, The Netherlands)
Rebecca Heald (UCB)
Tony Hyman (Max-Planck, Dresden)
Dyche Mullins (UCSF)
Francois Nedelec (EMBL, Germany)
Garret Odell (U. Washington)
Erin O'Shea (UCSF)
Alexander van Oudenaarden (MIT)
Clare Waterman-Storer (Scripps Institute)

Visiting Scholars:

Dennis Bray (Cambridge University, England)
Randy Schekman (UCB)
Jim Spudich (Stanford University)
Keiichi Namba (Osaka Univ., Japan)

**Application Deadline:
February 1, 2005**

Women and minorities are encouraged to apply. Backgrounds in physical/computational sciences as well as biology are welcome.

Mission: *The MBL Physiology course dates back to 1892 and has a rich history in training leaders in biology and generating Nobel Prize-winning experiments.*

However, this is not your grandfather's Physiology Course! It is an intensive laboratory course designed to teach students state-of-the-art techniques, provide an interactive environment where students and faculty from the biological and physical and computational sciences can teach one another their "trade," and promote learning by practice.

The course will provide a rich environment that is distinct from university courses, emphasizing experimental creativity, original research, and interdisciplinary approaches.

Why take off time from your university to attend this course?

- Work and socialize with outstanding faculty in an energetic, collaborative setting and develop your abilities to formulate and experimentally address research questions.
- Learn new techniques. For biology students, this course will train you in practical microscopy and biochemistry and will merge computation with experiment. For physical science students, it will provide an intensive introduction to the problems and tools of experimental cell biology.
- Be exposed to new ways of thinking about biological systems by mingling with students and faculty with various backgrounds in the biological, physical, and computational sciences.
- Enjoy an enthusiastic work hard/play hard environment. Long hours in the laboratory seeking answers to exciting research questions will be interspersed with fun social venues in a beautiful ocean-side setting.

Photos: Mitotic spindles: constructed on the beach by students (left) and visualized by microscopy in *Drosophila* cells (right)

Can you afford not to come?

For more information, go to our website: www.mbl.edu/physiology or e-mail: admissions@mbl.edu

THE MBL IS AN EQUAL OPPORTUNITY/AFFIRMATIVE ACTION INSTITUTION.